



Swan Supping

FREE

Issue 23



Campaign for Real Ale

Aylesbury Vale & Wycombe Branch

JUNE/JULY 2001



CAMRA MEMBERSHIP HITS THE 60,000 MARK AND IS STILL RISING



*Olympia
31st July -
4th August*

Laura Craft, a twenty year old student teacher at St. Johns College in York, became the 60,000th member of CAMRA when she was signed up at the *York Beer Festival* at the end of March.

CAMRA membership manager Malcolm Harding said that in April, and after all recently lapsed members had been taken out, CAMRA membership stood at 60,097 and was still rising at about five per cent a year.

Now that the *Ask If It's Cask*

campaign is proving to be such a success in the pubs, there could be an even sharper increase in the numbers.

Members get loads of benefits, including the famous *What's Brewing*, the magazine of the campaign, discounts on books and cheaper tickets for CAMRA events such as the *Great British Beer Festival* which is featured in this issue of *Swan Supping*.

If you are not a member yet, and would like to join, you will find a membership form on page 19!

*Last chance to book
for the Black
Country Coach Trip*



*Saturday 23rd June
See Page 15*

The Bell at Waddesdon

Traditional Country

Public House & Restaurant

Close to Waddesdon Manor

Cask Marque approved

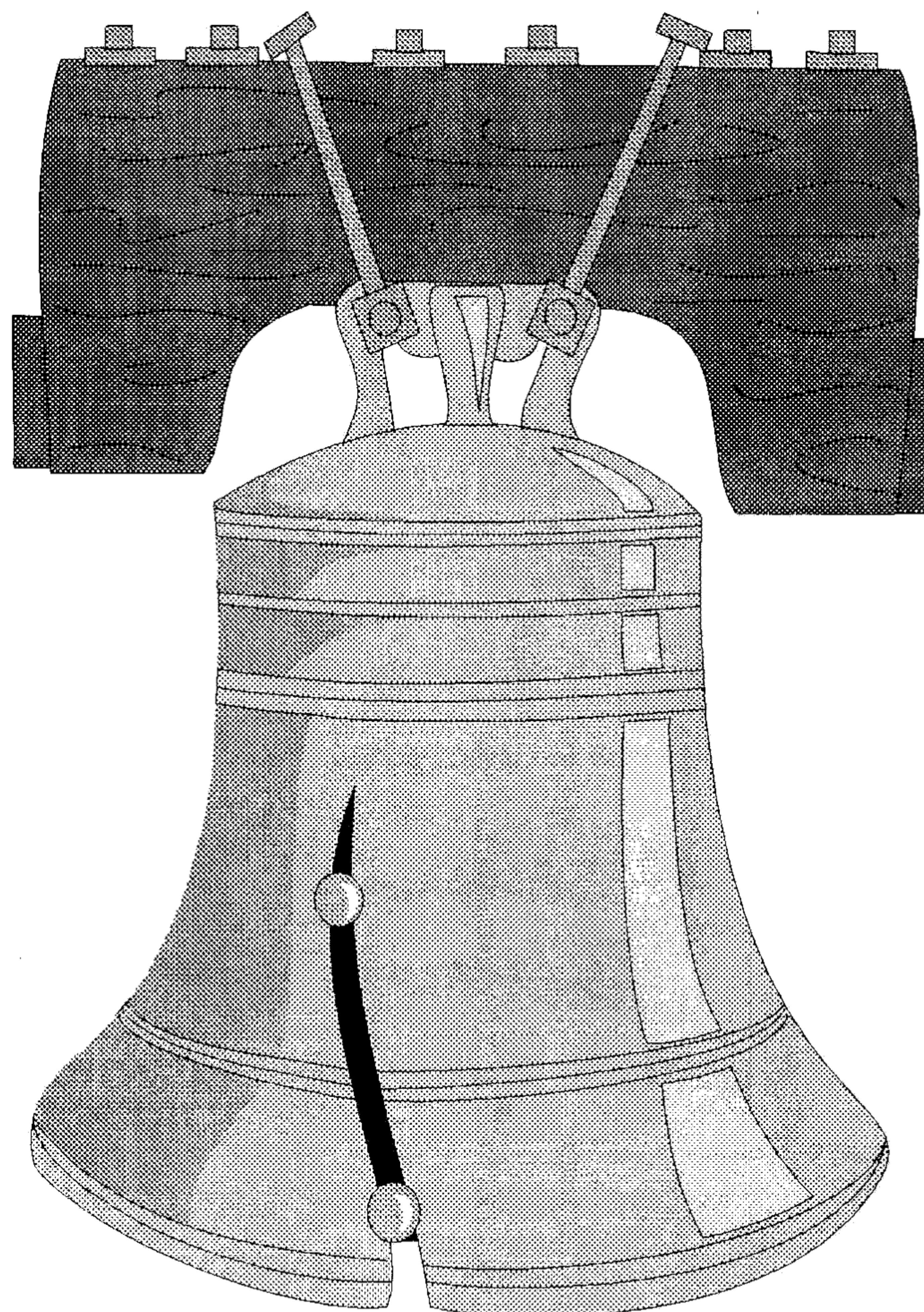
Real Ales

*including Fullers London Pride
and Morland's Old Speckled Hen*

*We offer an extremely popular bar menu,
which is reasonably priced, or for that
special occasion, try our stylish restaurant
with full à la carte menu.*

*To make your reservation,
please contact Nigel on*

01296 651320



**ASTON CLINTON**

The **Oak** is holding a beer festival over the weekend of July 12th - 15th. It is planned to have 24 real ales and two traditional ciders. Other attractions include a pig roast, bouncy castle and charity stalls.

The **Oak** has also taken advantage of **Fullers** decision to allow tenanted houses as well as managed houses to sell regular guest beers which will be on sale for around £2 a pint.

ASTON ROWANT

The **Lambert Arms** is under new management according to a blackboard on the roadside and they seem keen for people to try them out.

AYLESBURY

The lease of the **Buckingham** from **Brakspears** has been bought by **Wootton Inns Ltd** who now run five pubs. The new temporary landlord, George Lane, has been in the trade for over thirty years and he took over on the 14th May. He is due to be there for three months, but if trade improves, he would like to take it on a more permanent basis.

As we announced last issue, the **Hobgoblin** is due to be closed from

the 21st of May until Friday 8th June for a refit. The side bar will be removed and the central bar extended, as well as a general redecoration. When it reopens, there will be new menus for lunchtime and evenings, and a new membership scheme will be instituted offering members discounts on drinks and entry to the night club etc. Full details next issue.

The **Queens Head** has become the second pub in town to offer Thai food following the start of their 'Temples Thai' menu on the 12th April.

BLEDLOW RIDGE

At the **Boot**, the roof joists are up and there is a lot of work going on and it is believed that there is no change on the proposed June opening.

BOLTER END

Peter and Janet Hodges are to leave the **Peacock** at the end of their lease in October. They would like to thank everyone for the support they have had over the last 22 years at the **Peacock** together with the support from **CAMRA** and the *Good Beer Guide*.

GREAT MISSENDEN

The **Nags Head**, a free house just outside our branch, has been bought by Sue Turnbull who also owns the **Swan** in Thame. *Vale Edgars Golden Ale* is one of the real ales now on offer there.

HEDGERLEY

Although also slightly out of our branch area, but well worth the journey, is the **White Horse**. It is a permanent beer festival with usually six real ales and one cider from gravity dispense behind the bar, but each year on the Spring Bank Holiday week-end it sports a marquee in the garden with many more goodies on offer.

This year no fewer than 130 different beers were available from many of the country's microbreweries with the event spread from Friday lunchtime to Bank Holiday Monday evening. On the Saturday, the Slough, Windsor and Maidenhead Branch of **CAMRA** made its award to the landlord as again the pub had been voted their Pub of the Year. With plenty of food and excellent weather this was an event not to be missed - if you did then make a note now in next year's calendar for the 10th Festival.

HIGH WYCOMBE

At the **Bell** in Frogmore, Phil Bulliman took over as landlord in April. Phil previously ran the **Prince Regent** in Cambridge and two **Firkin** pubs in London. *Fuller's London Pride* and *ESB* are available and you may be greeted by a friendly Alsatian.

The **Belle Vue** on Gordon Road near the rail station may be a small locals' pub but it has three traditional beers - *Greene King Abbot*, *Adnams Bitter* and *Spitfire* from *Shepherd Neame*.

The **Desborough Arms**, which reopened in February with landlord Jim Sturt, has re-introduced traditional beer! *Fuller's London Pride* and *Morland's Old Speckled Hen* have been available recently.

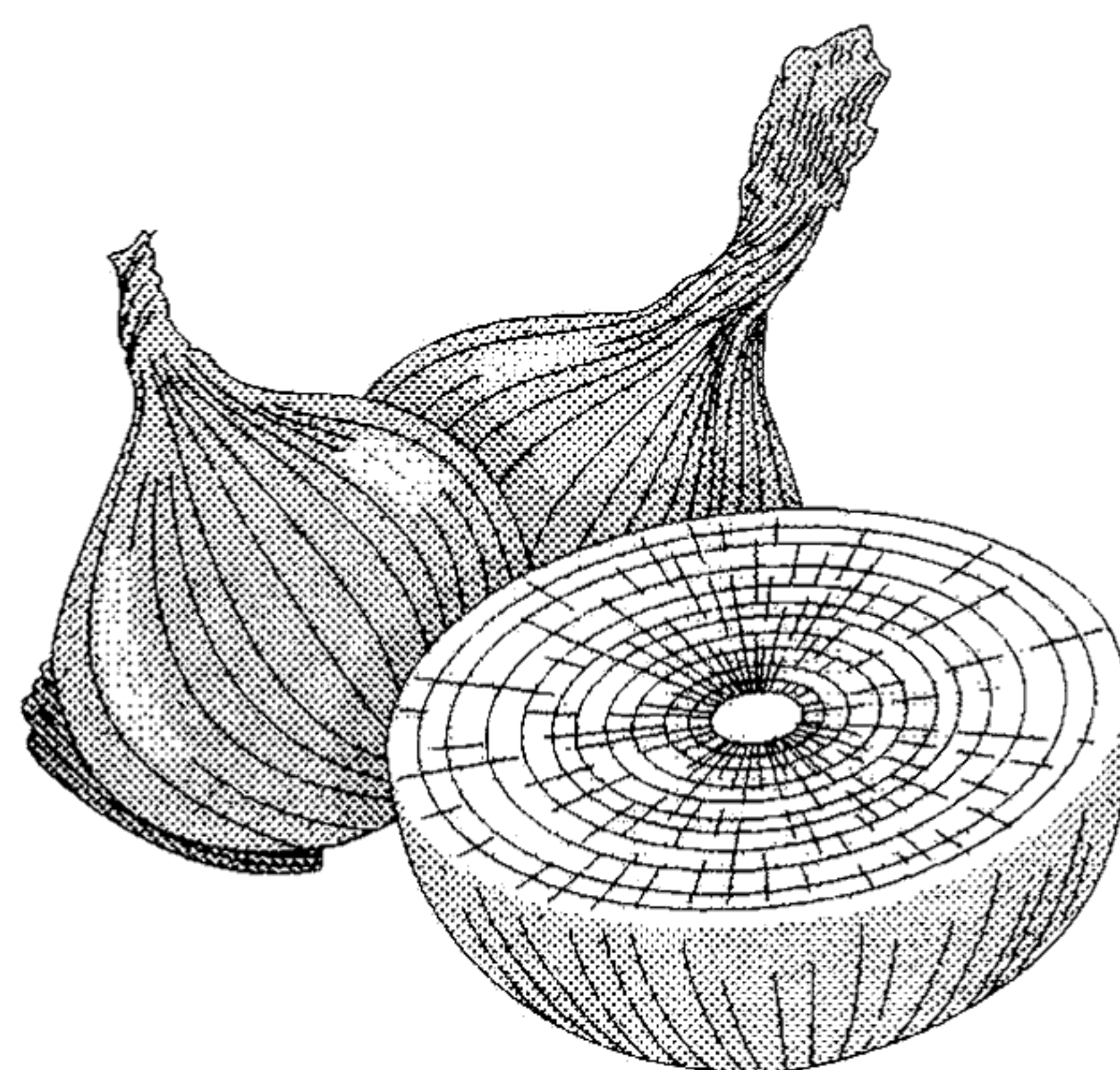
To celebrate Mild Saturday on 5th May, the **Falcon** served *Bateman's Mild* at 99p a pint. It sold out by mid evening.

Greene King is no longer involved with **Wycombe Heights** golf club and pub so their previous real ales, *IPA* and *Abbot*, have now been

(Continued on page 19)

Derek Pigott

Wholesale greengrocer to the catering trade



Tel: 01296 482379

Fax 01296 423800

CAMRA AGM REPORT

Over the weekend of Friday 20th April through to Sunday 22nd, CAMRA held its Annual General Meeting. This year, it was the turn of Newcastle to hold it. Amongst the throng this year (and, it must be said, every year) were a group of members from the *Aylesbury Vale & Wycombe Branch*.

What follows is a report by one of those members:-

It is Friday afternoon and our train pulls slowly over the Tyne bridge and into the station. Ah, Newcastle - all out! Another year and another National A.G.M. What goodies lie in store this year? - some good debating, guest speakers, great pubs and beers, perhaps Saturday night curry - we'll all soon find out.

Across the road from the station and straight into **The Head Of Steam** - a fine selection of north-eastern brews - then off to book in at our digs a short metro ride away and back to the beer-ex for registration - and what's this? - mild from the **Black Bull** home-brew pub in Haltwhistle - another first-time find and excellent. Someone calls the coaches are about to depart which sees Colin and I off to **Castle Eden**.



This once proud *Nimmo's* brewery is perhaps now a shadow of its former self and threatened with closure so we visit while the chance still exists. Not the best brewery visit - a whistle-stop tour with an uninformed guide and into the hospitality bar. The plentiful pie and mushy peas make up for the lack-lustre beers at far too cold a temperature - can't win them all!

Saturday morning, breakfast at the digs, and we arrive at the A.G.M. in just enough time to hear the mayor's opening address - not quite a first, but almost. This is my twenty-something'th A.G.M. and I must say the order paper of motions to debate appeals not a lot, but I guess I'm as guilty as the next man as one of Pete Judge's "peripatetic freeloaders." Memories flood back of the standing ovation in Southampton in 1986 for **George Bateman** after securing his

brewery's future in a family split, and the waving of order papers and wearing of gas-masks on Sunday morning sessions in the late 1970s after Saturday evening's indulgences in Indian restaurants! However, there were some good speeches from the chairman and the guest speakers, and **Roger Protz** is always worth a listen.

Lunchtime finds Colin and I off around some of the city centre's better pubs - many owned by the local pub chain **Fitzgeralds**. In the **Crown Posada** we encounter the said **George Bateman** and his wife who are drinking 'Yella' Belly - their own brewery's beer - and indeed why not? On leaving here we're spotted by Nick - about a hundred feet directly above us on the High Level bridge - and after negotiating his way down we continue our afternoon crawl along the north bank of the Tyne (the river, that is) to **The Tyne** (pub) and meet up with the said Pete Judge. A great selection of old records on the juke-box and a fine array of **Mordue's** beers.

Having missed the afternoon's A.G.M. debating we decide upon one of the

(Continued on page 4)

**THE END OF THE WORLD
BAR & RESTAURANT
WORLDS END, WENDOVER**
FOR RESERVATIONS AND INFORMATION
01296 622299



SUMMER IS HERE!

**WE HAVE:
NEW MENUS**

AL FRESCO DINING

**ATTRACTIVE PATIO GARDEN WITH
HEATERS**

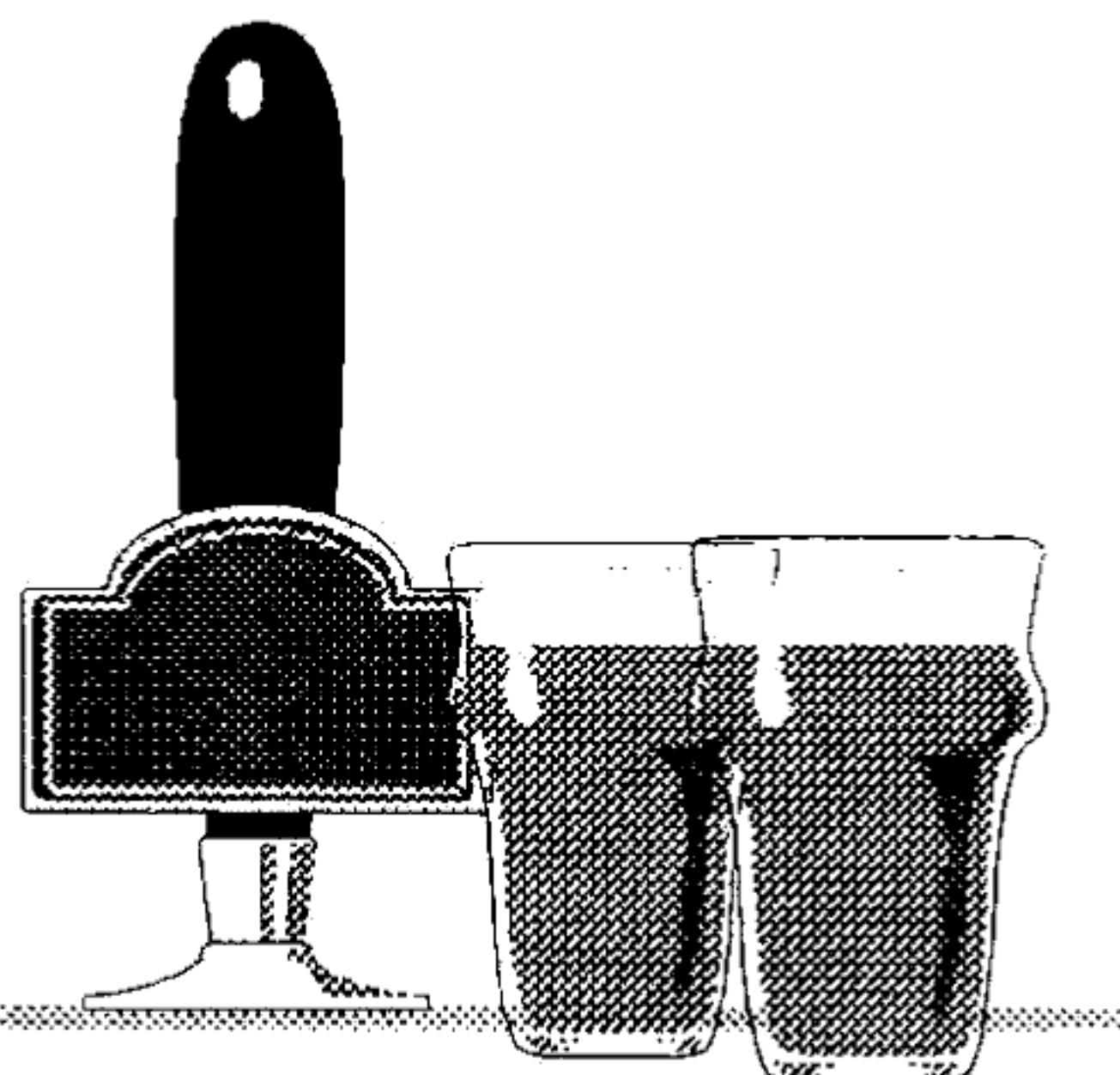
PLEASANT BEER GARDEN

**AMPLE OUTDOOR SEATING & PARKING
COME ALONG AND ENJOY THE SUN**

**STILL FROM
ONLY**

£1.20

PER PINT



FIND US IN THE GOOD BEER GUIDE 2000, 2001

SUNDAY 29th JULY
THE 4th WORLDS END MUSIC FESTIVAL
6 HOURS OF LIVE MUSIC & BANDS INCLUDING BBQ
FEATURING
MR ALVIN PRINTWHISTLE
PHONE 01296 622299 FOR MORE DETAILS AND PRICES

BEERS AVAILABLE IN JUNE & JULY

BRAKSPEAR - SEASONAL, BITTER, SPECIAL & OLD ALE

GREENE KING - ABBOT, OLD SPECKLED HEN & RUDDLES COUNTY

FULLERS - LONDON PRIDE & ESB

GUEST BEERS FROM THE TRING BREWERY

GUEST BEERS FROM THE VALE BREWERY

GUEST BEERS FROM THE REBELLION BREWERY

CAMRA AGM

(Continued from page 3)

suggested pub crawls described in the handbook and go to the seaside - well close enough.

A metro trip out to Tynemouth, across the river by ferry to South Shields, and back to Newcastle - quite a tour and all for about £3. Tynemouth's Victorian wrought-iron station is grandiose but in need of a coat of paint and its placidness belies the riotous centre pubs packed to the gunnels as the local football derby is shown on large screens.

In this part of the country you either support Newcastle or you support Sunderland so I guess the outcome of a draw causes the fewest upsets. Many pubs, most notable being the **Magnesia Bank** and the **Alum Ale House**, and many brews later we've had a great evening - I think I can remember - but your chairman Dave is not up to par (*flu! - not an excess of drink - Ed.*) and a takeaway

pizza replaces the traditional vindaloo - oh well, never mind!

Sunday morning, breakfast, and time to check out of the B&B. The remaining motions for debate concentrate on the finer points of the **Good Beer Guide** and time soon passes and another A.G.M. is brought to a close.

A last few beers in the beer-ex and a slow wander via our last few town centre pubs to the station for the train home. Tony is doing his impersonation of David Bailey, Elvis is being Elvis, and my usual gear of dead-slow is replaced by my only other gear of reverse and I manage to miss our train and have to wait for another! Nothing much changes over the years with my sense of punctuality.

All in all a great week-end. See you in Scarborough next year.

John Williamson



Vale Brewery of Haddenham offer Award Winning local ales, made from only the finest malted barley and whole English hops, in ready to drink party packs. To order, telephone 01844 290008 giving a minimum 24 hours notice for "bright" beer.

	(72 pt.)	(36 pt.)	(16 pt.)
Price List (Inc. VAT)	ABV Firkin	Poly-pin	2 Gal
Notley Ale	3.3% £72.00*	£42.00	£22.00
Wychert Ale	3.9% £74.00*	£44.00	£23.00
Edgar's Golden Ale	4.3% £75.00*	£45.00	£24.00

(Free Silver Swan T-shirt with every order over £40!)

Speciality Beers

Black Swan - Dark Mild	3.3% £73.00*	£43.00	£22.50
Black Beauty - Porter	4.3% £77.00*	£47.00	£24.50

The range of Hadda's Seasonal Beers are also available!!

Others

Halcyon Daze (bottle conditioned) 12x500ml	£18 per case
Budweiser Budvar 24x333ml	£24 per case



Total Refreshment

1851 - 2001 150TH ANNIVERSARY YEAR

Formerly Brewers from Wendover, at the foot of the Chiltern Hills, Dayla the family owned Drinks Distributor is now one of the leading names in the Wholesale Drinks World.

"Thank you to all our trade friends both old and new for all their loyal support over many years, long may it continue. In return we shall endeavour to provide a first-class service matched with a portfolio second to none". Here's to the 200th.

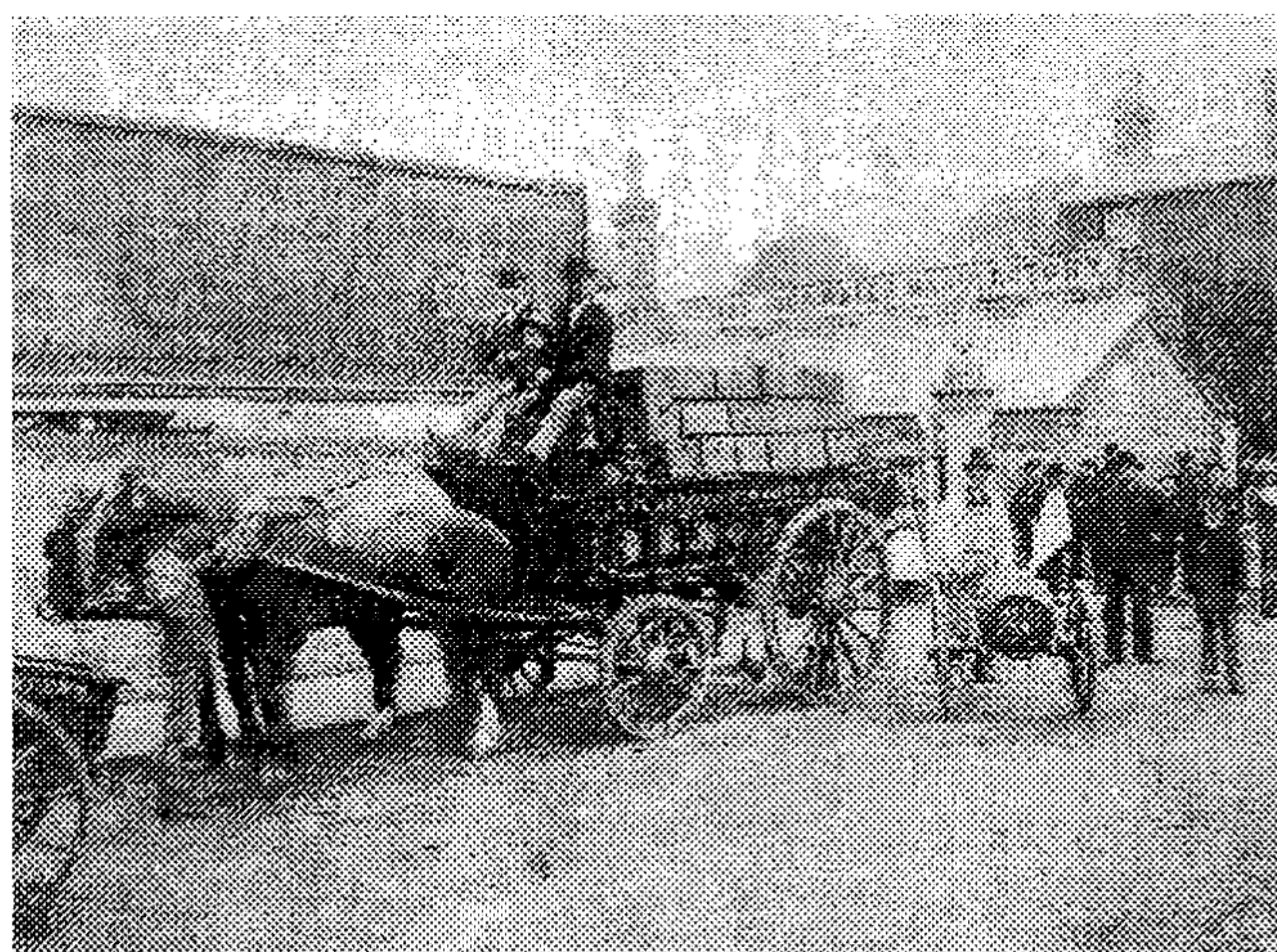
John Cooper

(Managing Director)

TEL: 01296 420261

FAX: 01296 397012

E-MAIL: sales@dayladrinks.co.uk



The Drays are out on their rounds
Dayla formerly North & Randall Ltd. est 1851

NATIONAL NEWS

CAMRA welcomes Government lifeline for rural pubs Victory in campaign for rate relief for village pubs

The Government has recognised the importance of pubs as essential community amenities. *CAMRA*, is celebrated success in its campaign for mandatory rate relief to be extended to village pubs. Following a lengthy consultation, the Commons passed the order at the beginning of April. Sole pubs in settlements with fewer than 3,000 inhabitants and with a rateable value below £9000 will be able to claim a 50% reduction in business rates in line with village shops and post offices.

CAMRA research in 2000 showed that around twenty pubs are closing each month - many of them in rural areas. Many rural pubs are struggling to compete due to lack of investment from pub companies.

The Government's original proposals suggested that rate relief should only apply to singly-owned village pubs. But following *CAMRA*'s recommendations, the initiative will apply to all sole village pubs as the majority of these are tenanted or leased. The Government estimates that over 8000 pubs will benefit from mandatory rate relief.

Mike Benner, Head of Campaigns and Communications said, "This represents an important landmark for the pub industry in England. We have campaigned for several years for rural pubs to be regarded as essential community amenities in the same way as post offices

and shops and the Government has finally listened. Pubs are often at the heart of small communities and are every bit as important as other amenities."

"It comes at a crucial time when many country pubs are suffering lost trade due to the foot and mouth disease outbreak. Rate relief will help, but we now need to see pub operators and brewers follow the Government's example and build long-term investment plans for marginal rural pubs."

CAMRA regrets brewery closures but welcomes continued independence of Wolves

CAMRA has announced its support for the Board of *Wolverhampton & Dudley* in their efforts to maintain the company's independence and continue brewing in Wolverhampton and Burton. The announcement follows the failure of incomplete bids from Pubmaster and Botts & Co headed by Robert Breare.

CAMRA deeply regrets the planned closure of Mansfield Brewery following a two-year review of the business. The brewery was acquired by *W&D* in 1999. *CAMRA* believes the brewery could have a viable long-term future.

CAMRA looks forward to a healthy future for the *Camerons* Hartlepool Brewery following its sale to *Castle Eden*, but opposes the sale of the Castle Eden site for development. Established in 1826, Castle Eden was sold by Whitbread to a management buy-out team in 1998. *CAMRA* welcomes the continued production of *Camerons* and *Nimmos* beers in the area.

Derek and Carol French
welcome customers both old & new

The Red Lion, Bierton

Sponsors of the Vale of Aylesbury Junior Athletic Club

Opening Times

Monday – Friday 11.30am – 3pm; 5pm – 11pm

Open all day Saturday & Sunday

New Extensive Menu

Daily & Weekend Specials

Sunday Roast £ 4-95

Choice of 4 meats & fresh vegetables



WATCH OUT FOR OUR SPECIAL OFFERS

Four Real Ales

Greene King IPA, Tetley Bitter,

Fullers London Pride

Regular Guest Beer (Old Speckled Hen)

Quiz night every Wednesday

Folk Music every other Sunday

Traditional Homemade Pies

every Weekday

Darts, Dominoes & Crib

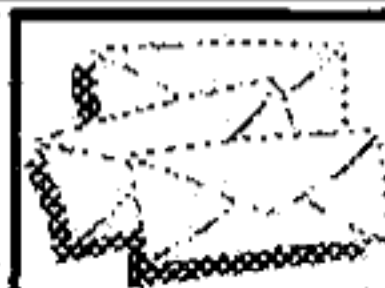
For more information or updates

please visit us on our web site

www.theredlionbierton.co.uk

or ring 01296 394857

LOCAL BREWERY NEWS



Letters



OLD LUXTERS

Old Luxters are now offering *Luxter's Gold* on draught. This is a strong, pale yellow, fruity, almost aromatic 5% ABV beer with a hint of sweetness. It can be bought for takeaway at the brewery shop for only £1-30 a pint.

Also on sale for the same price is *Dark Roast* which is another 5% ABV beer. Other beers start at £1 a pint and takeaway containers are available at the shop.

Old Luxters are brewing a *Damson Ale* for the **Mason's Arms** in Cumbria using damsons from that county. This will be available for a short period in the shop.

For further details, why not try their new website www.luxters.co.uk which is currently under construction.

REBELLION

In May, *Rebellion* won the Belgian Section of the *SIBA Wheat Beer Competition*, with *Rebellion White* @ 4.5% ABV.

They also have cask ales *Gold Digger* @ 4.2% ABV available for June as a monthly

seasonal followed by *Round Avoider* @ 4.4% ABV for July.

Rebellion having another **Brewery Open Weekend** on **July 21st/22nd 2001**. This year all beers will be available to try along with *Rebellion Red* @ 4.5% ABV (bottled beer). They will also be giving tours of the brewery and talks on the history of beer and pubs and Beer development over the last fifty years.



VALE

Vale Brewery will have on sale *Hadda's Summer Glory* for the next three months. This is a 4% ABV deep golden coloured ale with a single hop variety.

They are also offering *Hadda's Head Banger* which is a complex mix of three different malts, and it will be available periodically throughout the summer.

Dear Sirs,

I read in the last issue of *Swan Supping* an article on the full pints campaign. It said that 107 MPs were supporting the move and that a parliamentary motion has been tabled calling for a fair deal on pub measures.

May I, at this juncture, say what a load of old codswallop this all is. We do not need MPs supporting full measure, we need the courts to support it.

The Weights and Measures Act (1985) part 4 section 28 (if I remember rightly) states that a pint (of any liquid) that is claimed to be a pint must, by law, be a full pint of the said liquid. In other words, the motion that is currently being proposed is already the law of the land. Introducing a new law which says exactly the same as the old law is going to do nothing to improve matters.

If a publican refuses to obey the 1985 Weights and Measures Act, he will refuse to obey any new law forcing him to serve full pints. If the trading standards people, the police and the law courts refuse to enforce the old law, they can just as easily refuse to enforce any new law.

E. Evans

The Oak, Aston Clinton Beer Festival 12th – 15th July



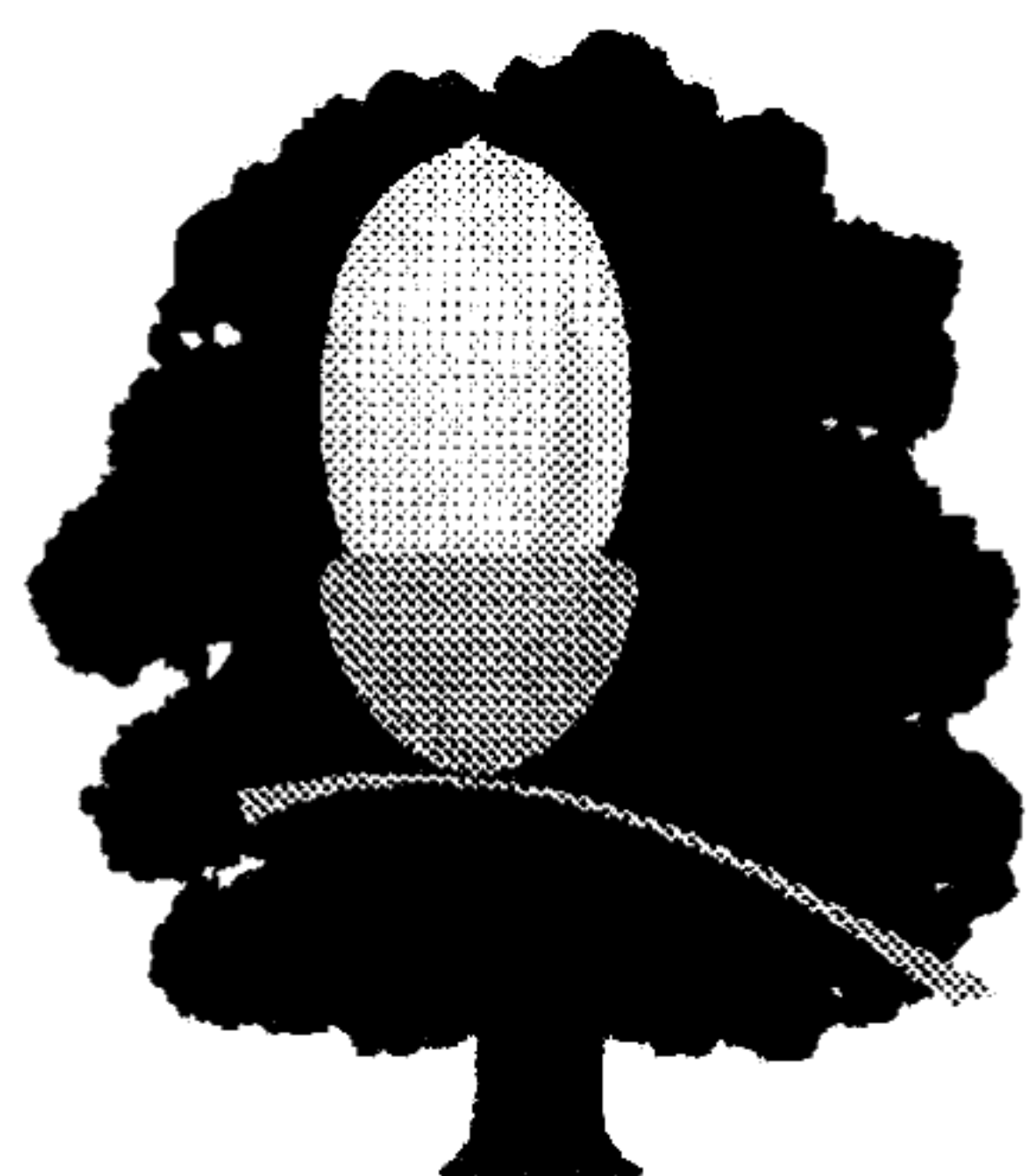
24 REAL ALES & 2 TRADITIONAL CIDERS

Starts 6pm Thursday Evening

*Food Available all sessions,
including a pig roast on Sunday lunchtime*

**GREAT FUN FOR ALL
INCLUDING MUSIC & CHARITY EVENTS**

*Bouncy Castle, Charity Tombola
Many other attractions*



NO ENTRY FEE, JUST BUY A PINT, OR TWO, OR

DID YOU KNOW?

NOT VERY FAR AWAY FROM HERE
YOU CAN GET A VERY GOOD PINT OF BEER,
AN EXCELLENT SANDWICH AND ENJOY BOTH IN
NEARLY AN ACRE OF BEAUTIFUL GARDENS.

*WE ALSO HAVE THE BEST BARBECUE
AND OUTSIDE DINING COURTYARD AROUND!*

INSIDE THIS 16TH CENTURY COUNTRY PUB OUR
RESTAURANT PROVIDES FIRST CLASS CUISINE AND A
CHOICE OF MORE THAN 50 WINES.

TRY US AND SEE.....
YOU WON'T BE DISAPPOINTED!



JOHNNY CHICK

'THE DINTON HERMIT'

***FORD VILLAGE IN THE HEART OF THE COUNTRYSIDE
HALF WAY BETWEEN STONE AND HADDENHAM***

01296 747473

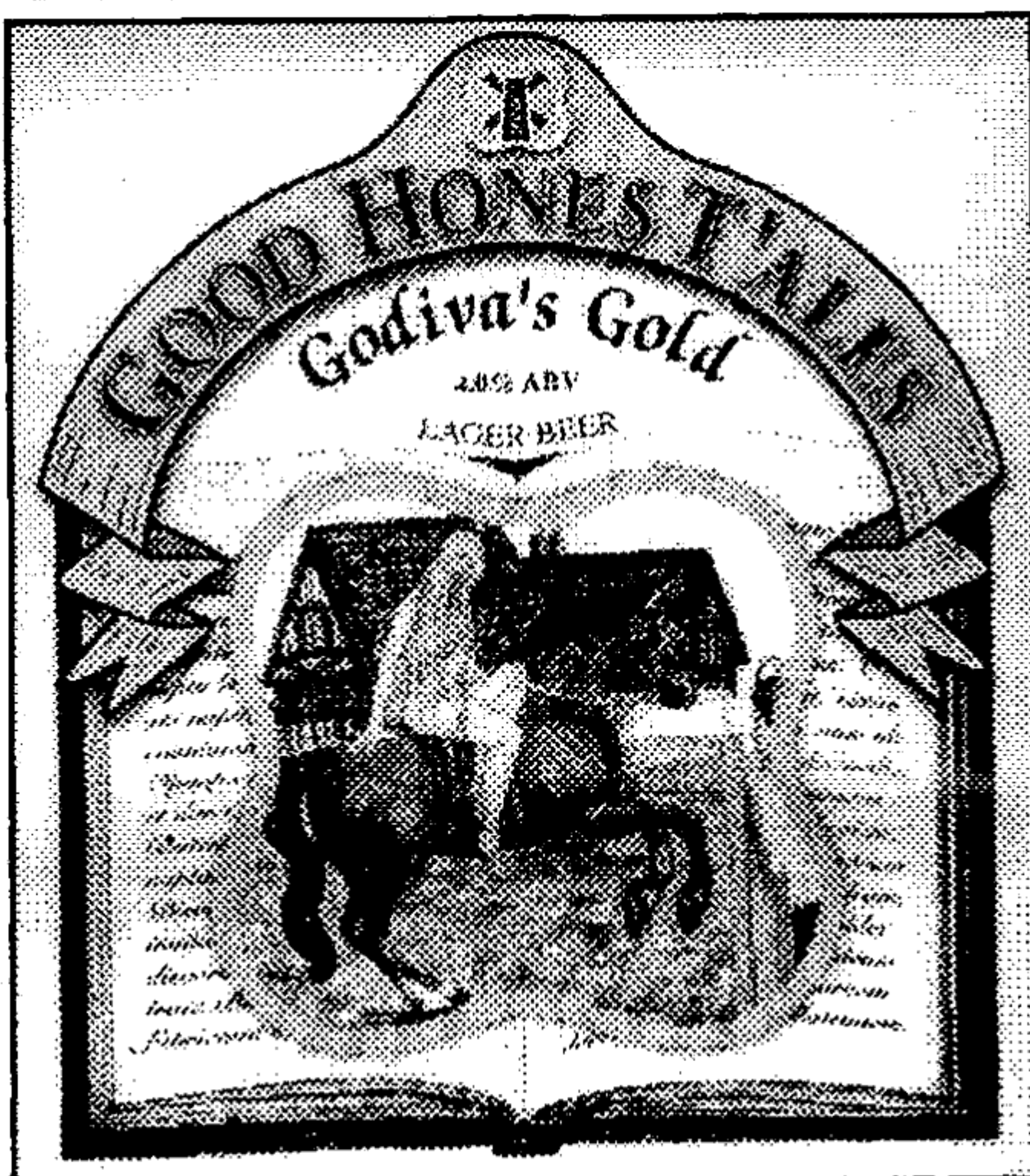
NATIONAL NEWS

Many are the tasks that befall someone who is both Chairman of the *Aylesbury Vale & Wycombe Branch* of CAMRA and the editor of *Swan Supping*. However, one of the most pleasant was having to attend a lunchtime 'do' organised by *Batemans*.

Alright, strictly I didn't have to attend, but I'd been invited and it would have been rude not to!

The invitation said 'The Fifth Lincolnshire comes to London 2001' and that it was opening at 12 Noon and that 'Tractors' were at 4pm. This latter part confused a poor townie like myself, as I suddenly had visions of loads of farm vehicles being driven into the centre of London for some sort of display. However, all it means is that is the time the thing finishes!

The venue was the *Hogshead*, Wellington Street, in Covent Garden. This pub was just off the route for our recent pub crawl round that area, but it would have made a fine stop off point! It has not suffered from the 'Art Deco' theme that has been applied to the rest of the chain. This theme fits nicely into brand new pubs such as the one in



Aylesbury, but do not go as well in more traditional venues, such as Marlow for instance!

Batemans were holding the event in an upstairs bar which I found to be full of people with an interest in beer. Although I only found one other CAMRA member there, I found one of the writers of *The Independent Imbiber*, various brewers and many representatives there to talk to.

There were four ales available at the bar. They had *XB*, *XXB*, *Organic 'Yella Belly'* and a brand new seasonal beer *Godiva's Gold*. When I bemoaned the lack of *DM* and the *Salem Porter* I was promptly put in my place by being informed that they were available in the downstairs bar!

I was very impressed with the *Godiva's Gold*. This is listed as a delicate beer brewed with lager malt, with Liberty and First Gold hops added to give a taste of citrus fruit and a delightful fragrance. The two pints I had (I find a second is always needed to confirm your opinions!) were delicious and showed how lager can be brewed and served without being frozen to death and being gassed up like a can of Coca Cola!

Besides the beer, there were Lincolnshire folk songs sung by John Conolly, and tales told by the story teller Taffy Thomas. All this and sausages and mash, personally served to me by *Jackie Bateman*. Can it get any better than this! Roll on the next time (if I get invited again that is!!).

David Roe

The Cock Inn At Wing



Great Food!

Great Restaurant!

Always a wide range of
Real Ale available!

*Why not come
and see for yourself?*

For further details phone
01296 688214

Vic & Sue Hinde
Welcome you to

The White Swan

10 High Street
Whitchurch

Tel: 01296 641228

Home Made Meals
Sunday Roast Lunches
Special Parties catered for
Large Attractive Beer Garden

2001 Good Beer Guide
Fullers Traditional Ales



NATIONAL NEWS

Britain's Best Pub

Cornwall rural pub voted

'National Pub of the Year'

The '**Blisland Inn**' in **Blisland, Cornwall** has been named Britain's Best Pub in the 'Pub of the Year' competition that is organised by **CAMRA**,

The pub, which has been run by Gary and Margaret Marshall for the last seven years, is situated in one of the most picturesque locations in Cornwall, high on the fringes of Bodmin Moor opposite the only village green in the county.

Mr Marshall said 'We are so pleased to have won this national award. It makes all the hard work worth while and would like to thank all of our regulars and the Cornwall **CAMRA** branch for their support of the last seven years. Although we are very keen to promote real ale from all over the country and turnover more than 200 different ales a year we do go out of our way to promote local beers and ciders from the Cornish breweries'

Tony Jerome, **CAMRA**'s Press Officer said 'This is great news for the Blisland Inn and rural pubs in general. They have faced serious problems due to the Foot and Mouth crisis over the last few months and we as a Campaign are working hard to encourage and promote

quality pubs in rural areas that offer great beer, facilities and service to all pub goers.'

Great Britain has approximately 60,000 pubs that could have entered the competition. Pubs were judged on Community Focus, Atmosphere, Campaigning, Quality, Style/Décor, Service & Welcome and Value for Money.

The two hundred **CAMRA** branches all nominated their own 'Pub of the Year' for their area and these were entered into the national competition. **CAMRA** members were invited to judge the pubs in their own regions and use special forms for entering scores on the individual categories. These regional winners were then entered for the further rounds which are co-ordinated by the National Executive of **CAMRA**. Four pubs made it to the final with the **Blisland Inn** being voted the overall champion.

For full details on the pub of the year for the *Aylesbury Vale & Wycombe Branch* of **CAMRA**, please turn to page 11.

The runners-up in this year's national competition were:

Six Bells, Bishops Castle, Shropshire

Harbour Bar, Kirkcaldy, Fife

Dripping Spring, St Leonards, East Sussex

The Bell



Bierton

Dave & Vee White
191 Aylesbury Road, Bierton,
Aylesbury, Bucks
Tel: 01296 436055

*Listed in the 2001 Good Beer Guide
Fuller's Award Winning Ales
Guest beers, June: Brakspear Bitter
July: Sharp's Cornish Bitter*

Vee and Dave have been serving customers over the past 13 years at the Bell, a traditional public house where you can always expect a warm welcome. A wide range of fresh home-cooked meals and award winning Fuller's ales are available at very affordable prices. As our regulars know, there are no gimmicks or gags, just honest value for money.

LIVE MUSIC ON SUNDAY EVENINGS (8.30pm):

Sun 10 June **RANCES ROCKING**
CHAIR BAND
Trad Jazz

Sun 24 June **MR SOUL MAN**
R&B and Soul

NATIONAL NEWS

At last! Licensing laws to be reformed

A warm welcome for proposed changes of antiquated licensing laws

CAMRA has warmly welcomed the news that the Government remains committed to the reform of our antiquated and bureaucratic liquor licensing laws. Proposed changes announced today will enable pubs to apply for longer opening hours and therefore better meet the needs of modern consumers.

Mike Benner, Head of Campaigns and Communications said, "The end of the 11pm terminal hour will help the English shake off the 'lager louts of Europe' label. I firmly believe that many of the problems we experience on our streets after closing time are a direct result of kicking everyone out of the pub at the same time. Too many people drink too much too quickly as closing time approaches and that causes problems. Treating people like adults will help overcome this and, over time, I believe younger people will adopt a more sensible approach to enjoying alcohol."

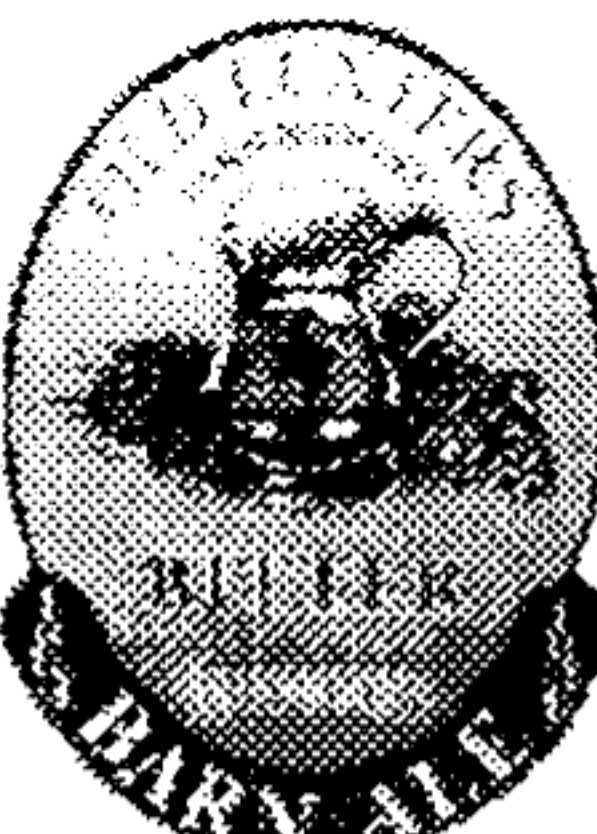
"Claims that longer hours will lead to drunken riots on our streets are not based on evidence. The Government introduced all-day opening in England and Wales during the week in 1988 and there was no significant increase in consumption. People cannot believe that they couldn't get a drink on a hot afternoon before 1988."

CAMRA research carried out in 2000 shows that 61% of people believe pubs should be able to open when the landlord pleases, subject to proper controls to protect residents from nuisance.

Mr Benner, said, "This won't be a free for all. All pubs will have to apply for longer hours as part of a business plan and residents will be able to make objections. Most will only apply for extensions of an hour or two at weekends, but that will make all the difference to people who wish to have an extra drink without being told to go home or go on to a club."

CAMRA is urging the Government to introduce legislation as soon as possible.

Mr Benner added, "We've been working towards this outcome for thirty years - and we're keen to celebrate success with a late night pint!"



**Old Luxters
Brewery**

Traditional
Ales
and Bottle
Conditioning

Tel 01491 638330



FIDDLER'S ELBOW £1-50
REGULAR GUEST BEERS

ALL DAY, EVERY DAY

KINGSBURY SQUARE, AYLESBURY

GATE NIGHT CLUB OPEN FRIDAY & SATURDAY 10:30PM - 2:00AM

WEDNESDAY & THURSDAYS (EXTENSION UNTIL 2:00AM)

KARAOKE ON SUNDAYS FROM 8:00PM

FREE POOL ON TUESDAYS

THURSDAY NIGHT IS MUSIC NIGHT



LOCAL CAMRA PUB OF THE YEAR

Congratulations to Barbara and Tony Cartwright, of the Clifden Arms Worminghall on the Pub being voted *CAMRA Aylesbury Vale and Wycombe Branch Pub Of The Year 2001*. To celebrate this achievement a certificate will be presented to Barbara and Tony at the pub on the evening of Monday June 18th from 8pm. Everyone is welcome to join in the celebration!

Barbara and Tony both come from Bournemouth and have been in the licensed trade for 25 years, the **Clifden** is their seventh pub, and they have been running it now for almost three years, bringing it back into the *Good Beer Guide* for the last two years.

The **Clifden** was built as an Inn with adjoining bake house in approximately 1699 and was named after the Viscount Lord Cliveden whose estate included the village of Worminghall. The Estate was eventually split and sold by auction at the **Spread Eagle Hotel**, Thame in July 1911.

In the 1920's the pub was owned by Halls Oxford brewery and was rented by Mr. Tom Fenn (who was a keen Wolverhampton Wanderers supporter) who ran the bakery as well as the pub, with his sons. By the 1970's *Halls* Oxford brewery had been absorbed, by *Allied*



breweries and the brewing moved to Burton on Trent. The **Clifden** was eventually sold in the early 1990's as *Allied* lost interest in village pubs and has been privately owned for the last ten years.

The restaurant now occupies what was the adjoining bakery, it is separate from both bar areas and has a fascinating collection of artifacts and old photo's. An extensive home prepared menu is available featuring everything from hot and cold baguettes to a choice of roasts. Vegetarian options and children's menu are offered and there is a special lunch board every Monday to Thursday (plus Wednesday evening), offering two meals for the price of one. A curry night is held every Thursday and fish and chips are available to take away on week day evenings.

Four different Ale's are normally available which include *Brakspear* and *Hook Norton Bitter* from the nearby breweries, and *Adnams Broadside* from Suffolk. The fourth ale varies but is usually from a micro brewery and can be from anywhere in the country as testified by the collection of badges behind the bar.

From its early days as a coaching inn and bakery the **Clifden** has been the hub of village activities. Worminghall is a small close knit village and the facilities of the pub and its huge garden are ideal for all manner of events. The annual village fete, medieval pig roasts and the bi-annual "Worminghall Olympics" are held here as were special



events celebrating the new millennium last year. A marquee is available for Weddings, Birthdays and other occasions. The garden also plays host to the local skittle game of Aunt Sally. Over the years the Pub has had its own teams in Football, Rugby, Cricket, Aunt Sally, Darts, Crib and Dominoes. During the 1950's until the mid 60's regular sing song nights were held and use to pack out the pub, as recalled by long time regular Bob Brooks. In Bob's own words "This pub has been the focal point of village life for four centuries, and long may it continue to be."

Well done Barbara and Tony and good luck in the regional competition.

Mick White

The **Clifden** now joins the other branch winners of the 2001 Pub Of The Year (POTY) competition, in the Regional Contest.

These are:-

Oxford. Hobgoblin, St Aldates Street, Oxford (GBG p257)
Slough, Windsor & Maidenhead. White Horse, Hedgerley (p45)
Reading & Mid-Berks. Hop Leaf, Reading (p41)
Vale of White Horse. Lamb, West Hanney (p259)
North Oxon. The Horse & Groom, Caulcott (p255)
West Berks. Bell, Aldworth (p38)

The timetable for completing judging of this round is Friday 24th August, which will give time to announce the result and publish details in the following issue of *Swan Supping*. The winner will go forward into the national contest which should be completed and announced by 31st December!! A judging form and the guidelines for scoring the entries can be obtained from the editor (contact details on the back page).



If you're not using the **Internet**
to market your business

the
netindex
group
can show you how

with

Professional Web Site design and build specific to your requirements

Hosting and Maintenance of the Site with updates as required

Internet Marketing

Advertising and Sponsorship Packages within our local on-line magazine

Retail Sales Sites with on-line ordering and secure credit card transactions

Electronic catalogues and secure database systems

Intranet/Extranet Systems

CD ROMs

Internet Service Provision

Domain Name Registration e.g. www.yourcompany.co.uk

Consultancy, training and seminars to Director and Senior Executive level

For more information contact Bill Imeson at:

the

netindex

group - total new media solutions

Litton House, 52-56 Buckingham Street, Aylesbury, Buckinghamshire HP20 2LL

Telephone: 01296 399000 Fax: 01296 397829 e-mail: info@netindex.tn

Alternatively, visit us at www.netindex.tn or www.aylesburyvale.net

Swan Supping

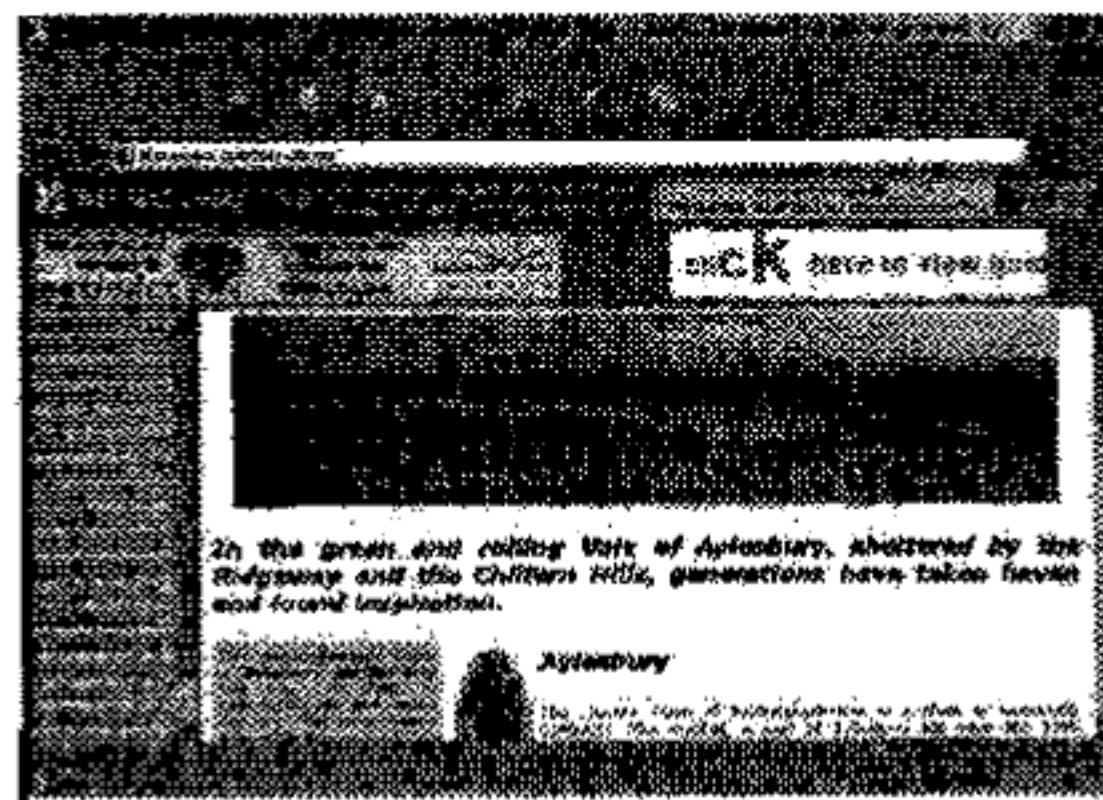
Welcome to Aylesbury & The Vale

YOUR PUB'S ROUTE TO THE INTERNET

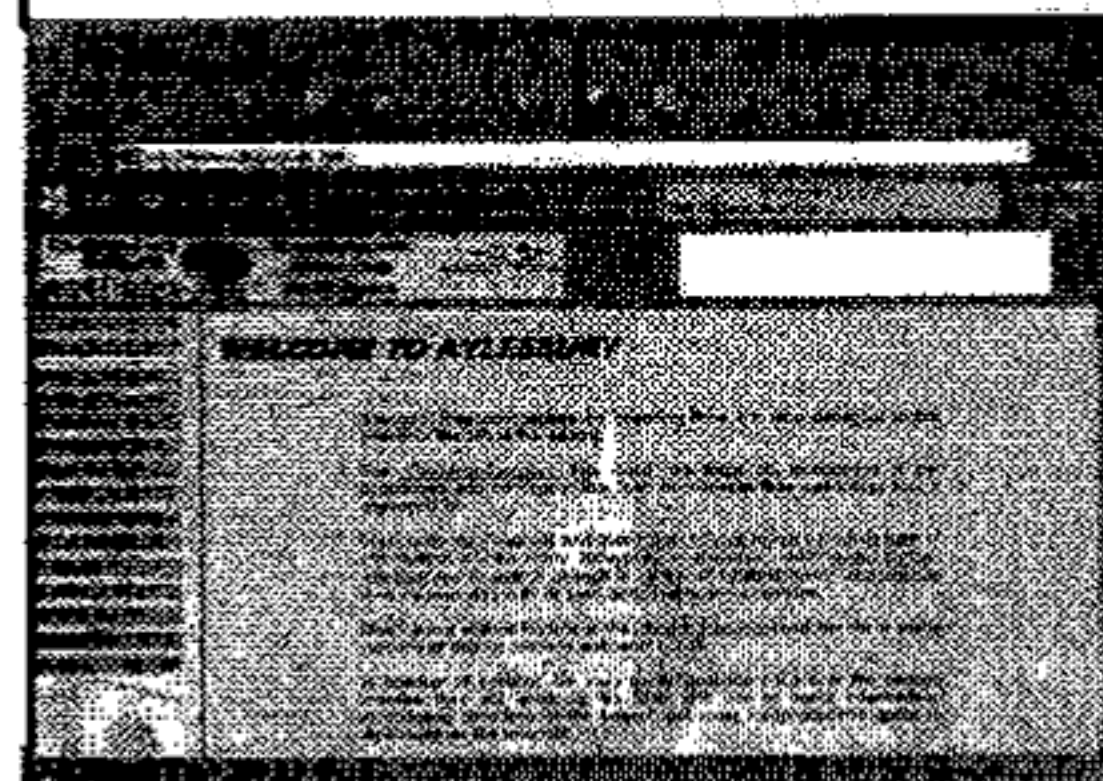
WITH **CAMRA** & **NETINDEX**

ADVERTISE ON THE AYLESBURY & THE VALE WEB SITE AT

www.aylesburyvale.net



Welcome to (Town)



Sections

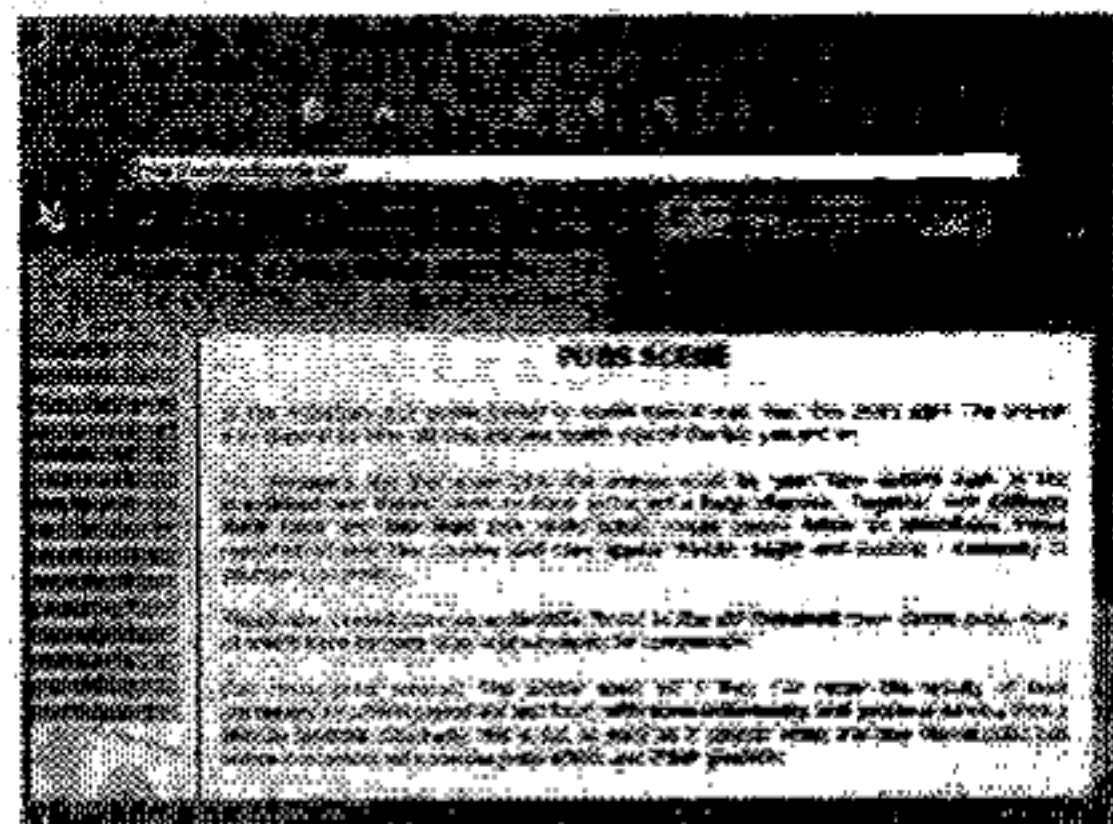
Business
Charities/Societies
Conferences/Events
Eating Out
Education
Tourism

Employment
Entertainment
Food & Drink
General Information
Health

Leisure
Motoring
Property
Shopping
Sport

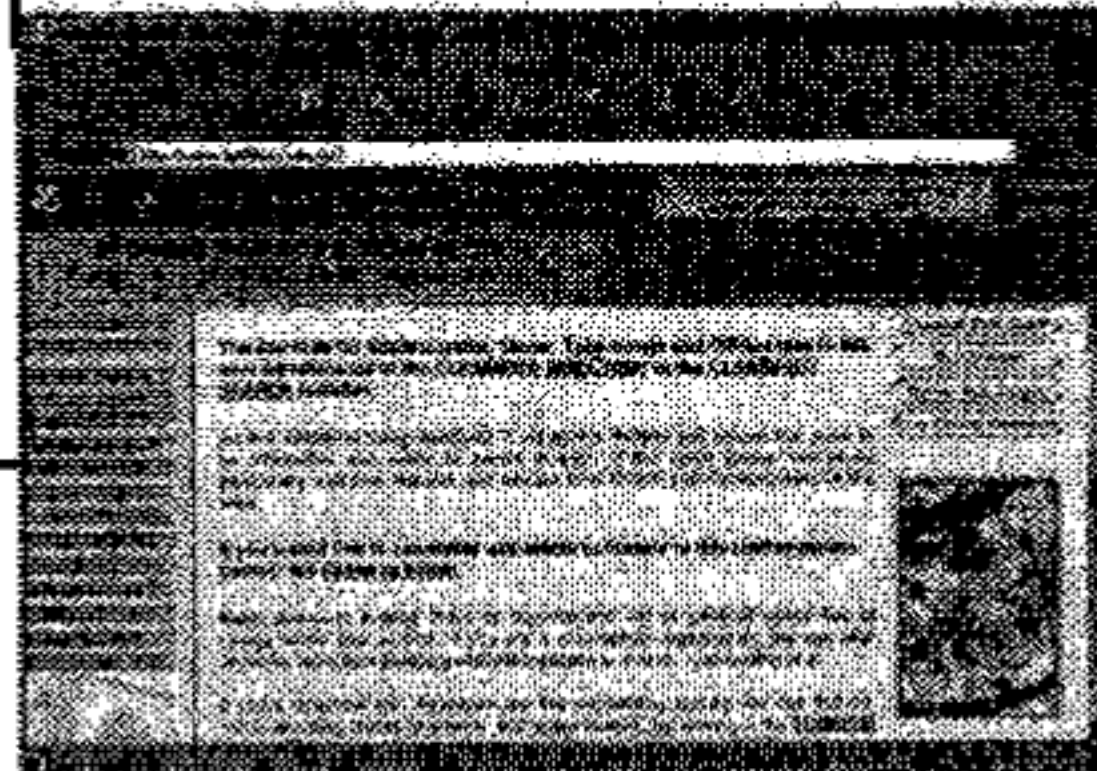
Click on
"Food &
Drink"

Pubs Scene (Aylesbury only)

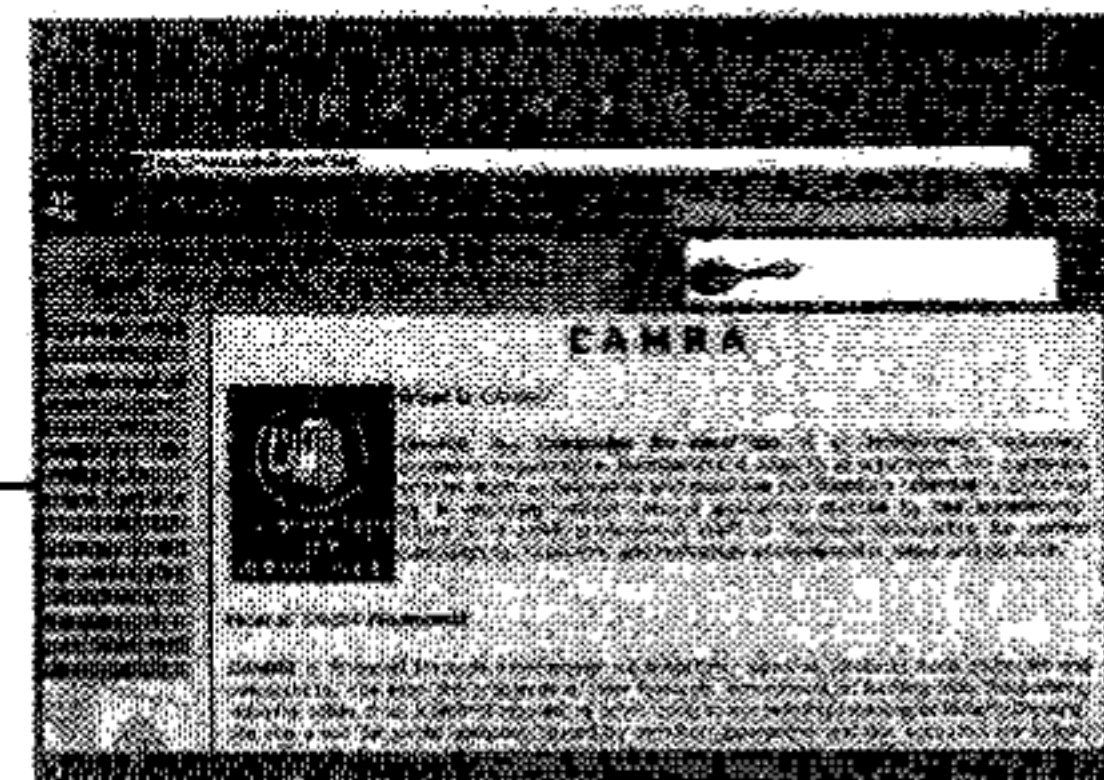


Click on
"Real Ale
Pubs"

Food & Drink

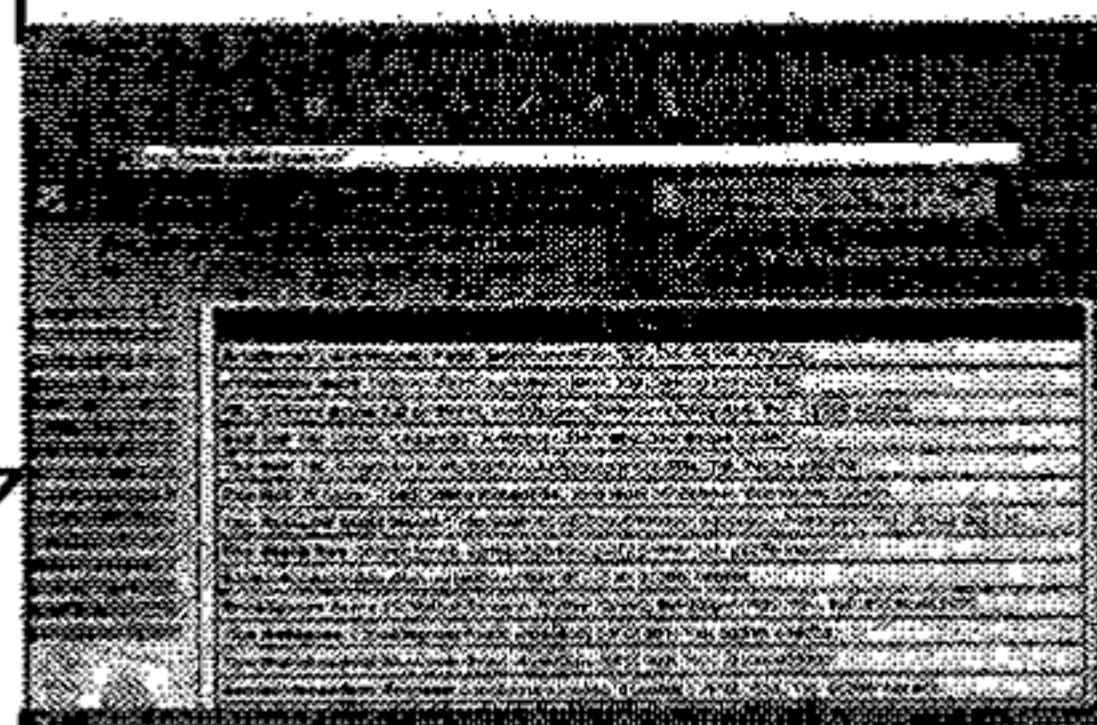


CAMRA



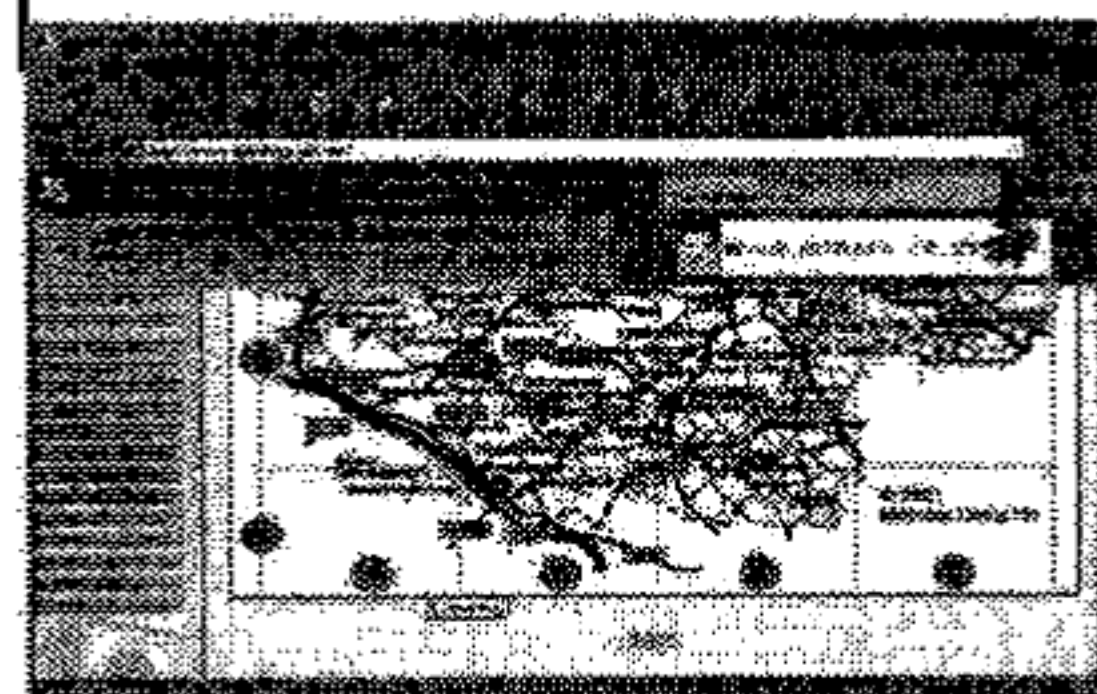
Click on
"Real Ale
Pubs"

Real Ale Pubs – Area Listing



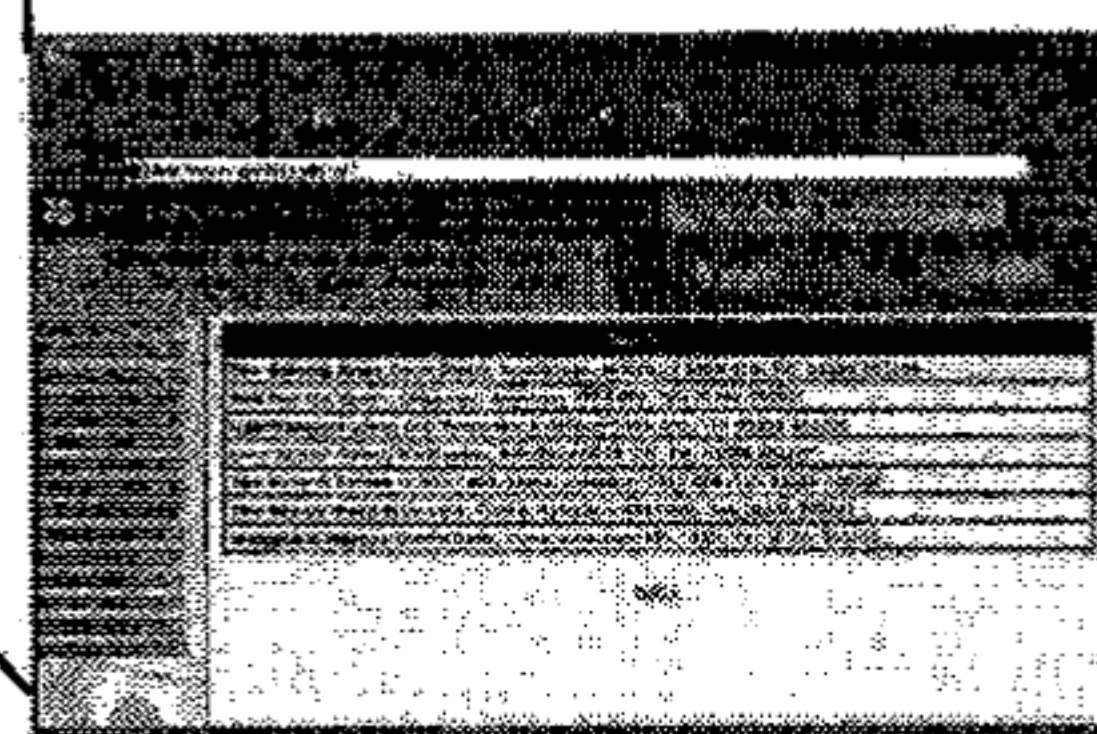
Click on your pub (if
highlighted) or Area
Map

Area Map



Click on a
grid square.

Real Ale Pubs – Local Listing



Click on your
pub – (if
highlighted)

Your Pub



For more details on this
promotion, please contact
BILL IMESON at **NETINDEX**
on 01296 611427 or e-mail
bill@aylesburyvale.net

WIN TICKETS FOR THE GBBF

Your chance to win three pairs of tickets to the Great British Beer Festival

We are offering three lucky readers the opportunity to win three pairs of tickets to the **Tuesday 31st August** afternoon session. This is the session for the trade and the winners will be able to be there when the **Champion Beer of Britain** is announced! As this beer could be limited in supply at the festival, it may well be your best chance to try it!!

These tickets are not on sale anywhere and the only other way to get to this session is to

buy a season ticket! The cost of this and other tickets is given on page 15.

Here are the twelve questions for the quiz:-

- 1: From which country does Leffe beer originate?
- 2: Apart from the price of a pint, what is an alecost?
- 3: Although the start of brewing may be lost in the mists of time, which is the earliest civilisation that has been found to have all the ingredients of beer production?
- 4: "I'm only here for the beer", was a slogan used in the advertisement of which drink?

- 5: Which northern brewery was taken over by Whitbread in 1989?
- 6: How many gallons in a firkin?
- 7: What is the device called that is fitted to a handpump nozzle to give beer an artificial head?
- 8: Which type of beer does Homer Simpson favour?
- 9: In the original definition, what ingredient differentiated beer from ale?
- 10: In the TV series, what was Rodney's and Del-boy's local?
- 11: A beer mug in **CAMRA's Good Beer Guide** is used to symbolise what?
- 12: From which type of workers in London did a style of beer get its name?

Please send your entries to the editor (address details are given on the back page). All entries should be received before **Sunday 22nd July** to allow us time to contact the winners.

In event of a tie, the winners will be decided by lots and the editor's decision will be final!

Live Music at the GBBF

As in other years, there is a full program of live music available at the **Great British Beer Festival** to compliment all the other activities.

This years entertainment is as follows:-

Tuesday 31st July (Evening)
Charminade String Quartet

Wednesday 1st August (Lunchtime)
Eduardo Niebla (flamenco & jazz)

Wednesday 1st August (Evening)
Tom Robinson Band

Thursday 2nd August (Afternoon)
Big Films Inc

Thursday 2nd August (Evening)
John Ottway Big Band

Friday 3rd August (Lunchtime)
Jazzy Trousers

Friday 3rd August (Evening)
Dr. Feelgood

Saturday 4th August (Lunchtime)
The Animals and Friends



ACCEPT NO SUBSTITUTES.

Discover real flavour – choose the cool, natural freshness of cask conditioned real ale.

TO FIND OUT MORE CHECK US OUT AT www.askifitscask.com



GENUINE REAL ALE HAS REAL TASTE.

Supported by CAMRA, the Campaign for Real Ale

Great British Beer Festival



Come along to the biggest
pub in the world!

31st July - 4th August,
Olympia, London

The **GBBF** offers over 700 real
ales, ciders, perrys and
imported beers. If you like a
drink and a good time then you
won't want to miss it!

Book your tickets now on **0870
739 7500**

GBBF doesn't only offer the
best drinks around. There is
live music, games to play,
shopping, friends to be
made, wonderful food to be
consumed and relaxing to be
done!

Opening Times & Prices

Tuesday 31st July	5pm -	
10.30pm	£5	
Wednesday 1st August		
11.30am - 3pm	£1.50	
Wednesday 1st August	5pm -	
10.30pm	£5	
Thursday 2nd August	Noon -	
10.30pm	£6	
Friday 3rd August	Noon -	
10.30pm	£6	
Saturday 4th August	11am -	
7pm	£4	
Season Ticket (all Sessions)		£16

There are reductions for
CAMRA members on all tickets
for the **GBBF**!!

Mick and Wendy Rolley

The White Hart Quainton

(Nice Pub, shame about the Landlord)

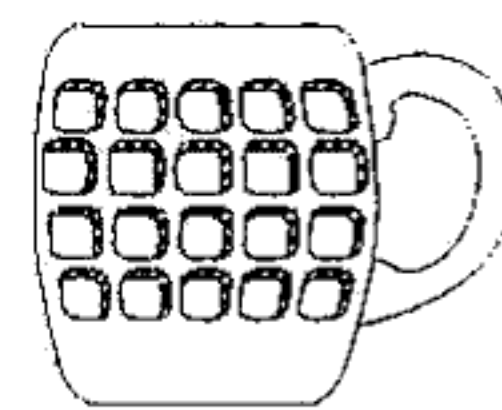
**Adnams Bitter
Benskins Bitter
Regular Guest Beer**

Evening meals served until 21:00

(except Thursday)

Bar Snacks available until 22:45.

Bed & Breakfast £25.00 p.p.p.n (inc V.A.T)
En Suite Room/Colour T.V./Tea/Coffee
English Tourist Board Approved (2 Diamonds)

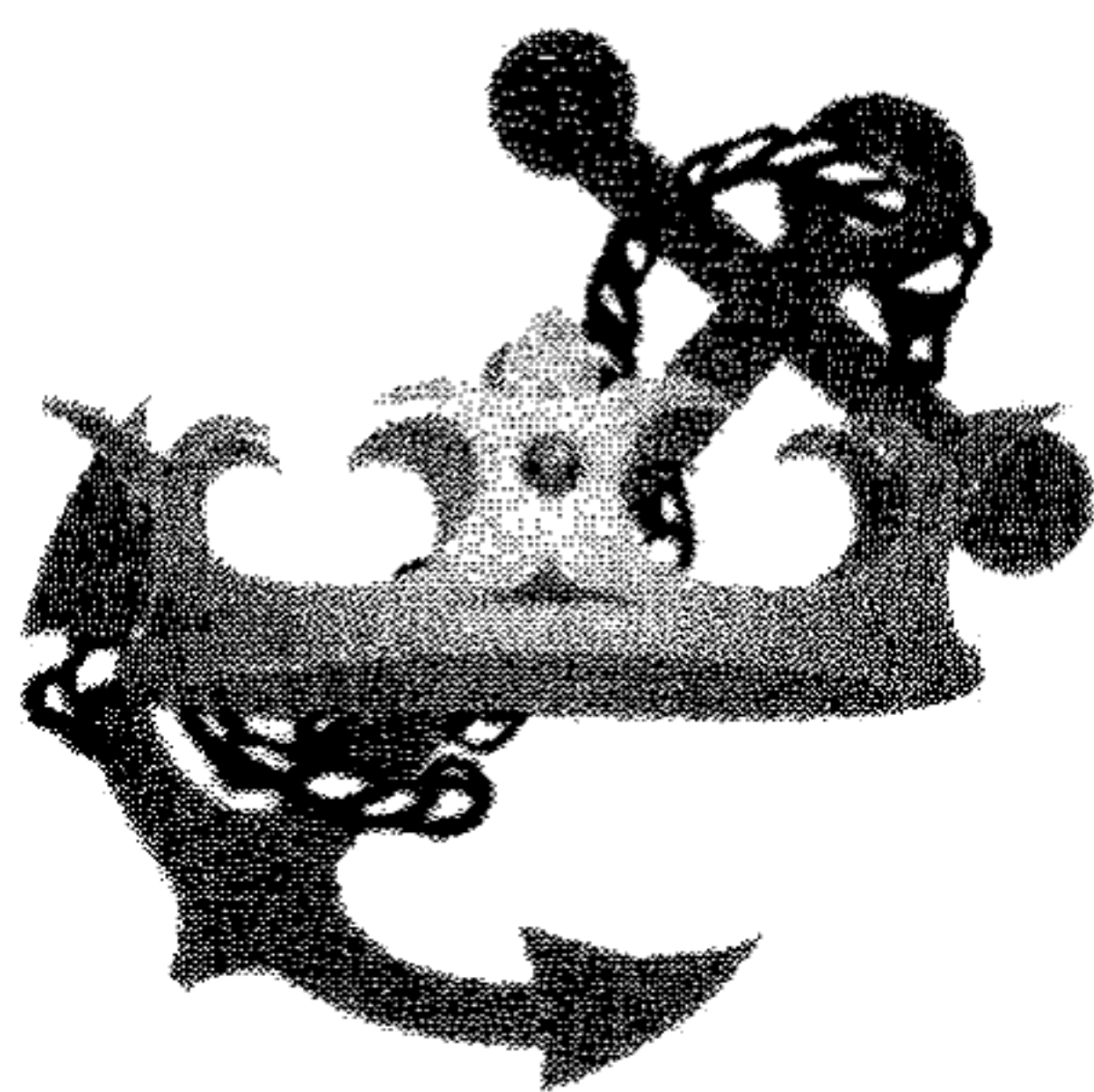


4 The Strand,
Quainton, Aylesbury
Bucks HP22 4AS



Tel : 01296 655234

Please note: We are closed for
Thursday Lunchtimes



www.CrownAndAnchor.co.uk

**Crown and Anchor
Marlow
Bucks
01628 891161**

JAZZ & ALE FESTIVAL - 7 JULY 2001

To celebrate half way - new words to the Twelve Days of Christmas!!!!

**ONE CROWN AND ANCHOR
TWO LEGS A SWAYING
THREE MENUS TO CHOOSE FROM
FOUR BANDS A PLAYING
FIVE POUNDS A JUG
SIX STAFF A WAITING**

**SEVENTH DAY OF JULY
EIGHT LADIES DANCING
NINE MUSICIANS LEAPING
TEN POUNDS A CAP
ELEVEN HOURS OF PLAYING
TWELVE FINISH DRINKING**

Branch Activities



Black Country Trip Saturday 23rd June

This popular annual event is rapidly running out of tickets so if you want to join in you will have to act now! It costs £18 per head and tickets and further information can be obtained by ringing **Tony Gabriel** on 01494 527884.

Pickups will be made from Aylesbury, near Wendover, High Wycombe and Stokenchurch. Set downs at the end of the trip will be in the reverse order.

All the old favourites will be included on the trip, plus a few other pubs which we expect will become favourites for our future coach trips.

We will be starting at the **Weatheroak Inn**, Weatheroak, which we have been to for the last few years. Besides having its own brewery, they can also cope with feeding a whole coach load of people in a remarkably quick time!

We will then finish the drive to the Black Country where we will sample the delights of the **Bull & Bladder**, Brierley Hill, **Rising Sun**, Tipton (a winner of the **CAMRA National Pub of the Year Award**), **Beacon Hotel**, Sedgely, and the ever popular **Waggon & Horses** in Halesowen.

We are also intending to visit an old favourite for those people who can remember back to the early days of the coach trips, namely the **Old Swan (Ma Pardoes)** in Netherton.

As tickets have been so much in demand for this trip, the branch is proposing to organise another trip at the end of September. This coach trip will be to Cambridge which has a large range of wonderful pubs to be enjoyed.

Full details will be given in the next issue of *Swan Supping*.

Bourne End Pub Crawl

Following **CAMRA**'s commitment to public transport, here is a suggested route using buses and train to the pub crawl around Bourne End on Friday 29th June.

For those people who live in the Wycombe area :-

6.42	Bus from High Street, High Wycombe
7.11	Arrive Bourne End.
7.20	Black Lion
8.00	Firefly
8.40	Bounty
9.30	Walnut Tree
10.14	Heart in Hand OR Bus
11.14	Bus from Bourne End rail station

For those people travelling from the Aylesbury end of the branch, there are trains from Aylesbury to High Wycombe, then follow directions for the High Wycombe people.

Trains to Wycombe	1733, 1832, 1913
Trains to Aylesbury	2308, 0008, 0055



The White Horse Whitchurch

01296 641377

for the best steaks
in the area

The Full Moon Hare Lane, Little Kingshill

Opening Hours
Mon-Sat: 12-3, 6-11
Sun: 12-3, 7-10



Food Times
Lunchtimes 12-2 PM
Evenings 6.30-9 PM

Licensees, Alan & Pam Sandell, welcome you to a pub with good food, good beer & good company.

An English country pub, set in the Buckinghamshire countryside, full of character and offering a fine selection of real ales,

Bass, Adnams, Ringwood Best Bitter
plus **Guest Beers** that change weekly,
lagers and wines, a food area and a real fire in winter.

An extensive range of home cooked dishes is available every day for lunch or dinner, including home-made soups, main courses, snacks, vegetarian and sweets at reasonable prices.

SENIOR CITIZEN LUNCH – EVERY WEDNESDAY

Phone 01494 862397

www.thefullmoon.fsbusiness.co.uk

The Royal Standard
Wooburn Common Road
Wooburn Common

(next door to Odds Farm Park)

Tel: 01628 521121

A traditional country pub serving a wide range of cask ales and offering lunch and evening** menus.
Bookings welcomed*

Grills, fresh fish dishes and daily specials

Lunchtime Bar Snacks

Pizzas to eat in or take away.

Quiz night every Monday (not Bank Holidays)

Beer Garden; Paved Terrace; Petanque Piste for hire



Situated between Beaconsfield and Burnham.

From Beaconsfield, follow the A40 west. Take the left turn (Broad Lane) signed towards Taplow & Maidenhead. Follow the road for about a mile and turn left into Wooburn Common Road.

You will find us on the left.

From Burnham, follow Dropmore Road towards Beaconsfield. When you reach Dropmore School, turn left into Wooburn Common Road. You will find us on the right, about a mile down.

* Lunches served every day except Monday

** Evening meals available Tuesday, Wednesday, Thursday, Friday and Saturday

MOWCHAK

Bar & Indian Restaurant
Wycombe Road, Stokenchurch
01494 485005



**Not just a pub
 Not just an Indian**

2 Real Ales
Morlands Original
Ruddles County

Sunday Lunch Buffet
E.A.M.A.Y.L
£7.50 Adult, £4.50 Child
Menu changes every week

Takeaway service
available

Be a Brewer for a Day

As part of the *Great British Beer Festival (GBBF)*, *CAMRA* is offering their members the chance to become a brewer for a day!

With the GBBF being open all day Thursday and Friday, more staff than ever are needed at this year's Festival.

As a thank you to *CAMRA* members who volunteer as staff working a full day on either of those days, they will be entered into a prize draw to win a day's brewing at *St Austell Brewery* in Cornwall plus two night's accommodation.

St Austell is celebrating its 150th birthday this year and is launching six seasonal ales to celebrate the brewery's birthday as well as re-branding its four main ales.

Roger Ryman, Head Brewer of *St Austell*, said "As the only traditional, family-owned

brewery in Cornwall, we are delighted to offer a day's brewing at *St Austell* for a *CAMRA* volunteer and their friend or partner. *St Austell Brewery* takes immense pride in being a family firm, from the boardroom to the factory floor and that is a tradition we will take forward to meet the challenges in what it is a fiercely competitive industry. We are also delighted to be taking a brewery bar at this year's *GBBF* for the first time."

The date for this unusual day's brewing can be confirmed nearer the time and the prize will include two night's accommodation in a *St Austell* pub nearby.

Alison Bridle, the Festival Organiser said "This is a lovely way to say thank you to the staff and I am sure the winner will enjoy being part of *St Austell's* 150th birthday celebrations."

The Clifden Arms



Why not celebrate your wedding, birthday, christening or other special occasion in the delightful surroundings of The **Clifden Arms**. A marquee is available for larger functions. Call us on 01844 339273.

Barbara & Tony invite you to The Clifden Arms Warminghall.

Take in the atmosphere of a fine English country pub. Our food is as appealing as the setting with a large garden and fun play area for the children.

Enjoy a traditional pub lunch in the bar or choose from our comprehensive menu in the comfort of the restaurant. A children's menu is always available.

At the weekend, why not bring the family and enjoy our traditional Sunday lunch.

Special lunch board every Monday to Thursday (plus Wednesday evening), offering two meals for the price of one.

Take-away fish & chips Monday to Friday, 6.30 – 8.30 p.m.

Curry night every Thursday

Real ales on tap including weekly guests

Meals served from 12 – 2pm & 7 – 9pm

The Clifden Arms

Local News

(Continued from page 2)

replaced by *Courage Best* and *Directors*.

Karl Harvey has taken over at **Wycombe Wines** off-licence on Crendon Street. There has been some rearrangement of the premises but there is still a range of wines, champagnes, snacks, bottled beers and traditional beers from the barrel. Take your own container or buy one there.

LACEY GREEN

The **Whip** on Pink Lane, Lacey Green, which was the 40 mile stop on the Rotary organised Pedal Push charity bike ride, has a Club (loyalty) card and its own web site, www.whipinn.co.uk. Club card holders put money on the card for future spending and are then entitled to discounts (initially 2%) on drinks and food. After spending £300, you upgrade to Silver with 4% discount, another £300 means Gold and 5% discount, another £300 takes you to Platinum and 6%. Failure to spend for 3 months relegates you down a level. Failure to spend for 6 months cancels the card. Receipts have to be requested for every transaction, which could be tricky when the pub is busy. Most importantly, the beers available were *Courage Best*, *Ruddles Best*, *Fuller's London Pride* and a seasonal from *Cain's*.

LOUDWATER

There are continuing arguments about the **White Blackbird** becoming a *McDonalds*. There have been demonstrations by local residents against the plan for a drive-in burger take-away.

MARLOW

The **Crown & Anchor** will be holding a 'Jazz & Ale Festival' on July 7th. Besides having loads of music from three Jazz bands, it is planned to have around thirty real ales on offer, including beers which have never been seen in Marlow before! The **Crown & Anchor** have also launched their own newsletter which is called 'The Experience'.

NORTH MARSTON

The **Bell** has been saved from possible closure. The owners, *Pubmaster*, have found a tenant to take on the lease. Harold Bagnell will be taking over on 31st May and promises to have one real ale on sale. Harold, known as "H" will be well known to customers of the **Lion** in Waddesdon where he was head barman until quite recently.

OVING

The **Black Boy** has been run by Bruce Harden since November 2000. His real ales are currently *Adnams Bitter* and *Marstons Pedigree*. Bruce is a manager

for *Ye Olde Barrel Taverns*, a small pub group which has leased the **Black Boy** from *Pubmaster*. The other pubs in the group are the **Bell** at Chesham and pubs in Folkestone, Rochester and Staines.

SAUNDERTON

The **Rose and Crown** is undergoing a gradual refurbishment. The walls were bare a few weeks ago and the decorators have been/are in. Only two real ales on when visited (there used to be four).

STONE

A sign has appeared out side the **County Arms** offering it for sale with planning permission for four houses. Since planning permission was granted about six months ago, all that has happen is that the pub has become more and more vandalised. What a sad end to what could now be a viable concern, following the building that has taken place at that end of the village!

WHITCHURCH

The second annual beer festival was held at the **White Horse** over the May Bank Holiday. Landlord David Hayle's interest in them goes back to his days at **The Five Arrows**, Waddesdon when they were held on August Bank Holiday weekends. The beers consumed over the weekend were *Ansells Dark Mild*, *Tolly Original*, *Marstons Pedigree*, *Brains SA*, *Batemans XB*, *Morland Old Speckled Hen*, *Jennings Cumberland*, *Youngs Special*, *Jennings Cockerhoop*, *Timothy Taylor Landlord*, *Brakspears Barnstormer* and *Draught Bass*.

The **White Horse** was busy across the whole weekend with only a couple of pints of the Mild remaining by Tuesday morning, (which was used in their fish batter).

Considering that the powers that be in the village had cancelled the May Monday Feast, they were amazed at the number of villagers and grockles who supported them, even to the extent that some of them contacted the local radio station on the Tuesday thanking them for their efforts over the weekend. It also raised money for Cancer Research as ten pence from every pint of ale purchased will go to the charity.

WOOBURN MOOR

The **Mother Redcap** has now reopened as the **Ivory Restaurant** (and it now claims to be in Loudwater!). Don't expect any real ale though.

WYCOMBE MARSH

The new people at the **Rifle Butts** are Kyla Davison and Peter Maddison from the **Hot Air Balloon** pub in Horley, Surrey. The price of the lease was £45,000 and they intend to keep the pub as it is.

Branch Contacts

Chairman	David Roe	01296 484551
Treasurer	Tony Gabriel	01494 527884
Secretary	Nick Holt	01296 483554
Bierton	Mick White	01296 428266
Beaconsfield	Colin Staines	01494 674427
Bledlow Ridge	Dave Thompson	01494 481492
High Wycombe	Elvis Evans	01494 511248
Marlow	John Williamson	01628 486378
Stokenchurch	John Bazin	01494 483039
Wendover	John & Tina Wood	01296 625215
Regional Organiser	Colin Lanham	01344 481305

Useful Addresses

CAMRA HQ:

230 Hatfield Road, St Albans, Herts AL1 4LW.

Tel: 01727 867201

Fax: 01727 867670

E-mail: camra@camra.org.uk

Internet: <http://www.camra.org.uk>

PLANNING DEPARTMENT

For comments, complaints or objections about pub alterations or developments -

Aylesbury:

AVDC Planning Dept, Exchange St,

Aylesbury

HP20 1UB

Tel: 01296 585406

TRADING STANDARDS

For complaints about short measure, price lists, strength lists (ABV), etc.

Aylesbury:

County Hall, Walton Street, HP20

1UP Tel: 01296 383212

Oxford:

PO Box 618, County Hall, OX1 1DX

Tel: 01865 815000 (Mon - Fri

8:30am-5pm)

ADVERTISING STANDARDS AUTHORITY

For complaints about deceptive advertising-

Advertising Standards Authority

Brook House, 2-16 Torrington Place

London WC1E 7HN

JOIN CAMRA TODAY

Just fill in the form below and send your remittance (made payable to CAMRA) to Membership Secretary, CAMRA, 230 Hatfield Road, St Albans, Herts, AL1 4LW

Rates are Single £14, Joint £17 (at same address),

Student/OAP/Unemployed/Disabled £8

Joint OAP £11 (at same address)

Under 26 £8

Date of birth

For Life/Overseas rates, please ask for details.

Name(s)

Address

.....

.....

Postcode

I/We wish to join the Campaign for Real Ale, and agree to abide by the Rules.



I enclose a cheque for £.....

Signature Date

AYL (Swan Supping)



Beer Festival Diary

JUNE

13-16 (Wed-Sat): 9TH CATFORD BEER FESTIVAL, at the Lewisham Theatre, Rushey Green, Catford, London SE6
14-16 (Thu-Sat): THE 24TH SALISBURY BEEREX FESTIVAL, at the Salisbury Arts Centre, St Edmunds Church, Bedwin St, Salisbury (15 mins from rail stn, 2 mins from bus stn).
15-16 (Fri-Sat): EXETER & E DEVON CAMRA SUMMER BEER FESTIVAL, at the Coaver Club, Matford Lane Exeter (behind County Hall). 30 + beers + cider
20-23 (Wed-Sat): ACCRINGTON BEER FESTIVAL, at the Town Hall, Accrington (5 mins from Bus + Rail stns).
21-23 (Thu-Sat): 5th SOUTHAMPTON BEER FESTIVAL, at The Guildhall, Southampton (5 mins from central stn, 75 mins from London).
22-23 OLD CORN & HOP EXCHANGE, LEWES TOWN HALL, LEWES.
28-30 (Thu-Sat): 25TH LOUGHBOROUGH BEER FESTIVAL, Town Hall, Market Place, Loughborough, Leics
29-30 (Fri-Sat): SECOND KINGSTON BEER FESTIVAL, at the Surrey County Staff Club, Penrhyn Rd, Kingston

JULY

1 (Sat): 2ND DEVIZES BEER FESTIVAL, at The Wharf, Devizes, Wiltshire
5-9 (Wed-Sun): 23rd DERBY BEER FESTIVAL at the Assembly Rooms, Market Place, Derby.
7-9 (Fri-Sun): FENLAND 2000 BEER FESTIVAL, at the Central Park, Boston.
7-9 (Fri-Sun): BOSTON BEER FESTIVAL, at the Central Park, Boston
7-9 (Fri-Sun): LOUTH DISTRICT BEER FESTIVAL, Riverhead, Louth.
8-9 (Sat-Sun): NORTH SUSSEX CAMRA ARDINGLY BEER FESTIVAL, at the South of England Showground, Ardingly, Nr Haywards Heath.
14-15 (Fri-Sat): EXETER SUMMER BEER FESTIVAL, at the Coaver Club, Matford Ln, Exeter (County Hall).
15 (Sat): MANSFIELD & ASHFIELD CAMRA SUMMER BEER FESTIVAL, in conjunction with Ashfield District Council, at The Kirkby Blues Festival, Derby Road, Hollinwell, Kirkby-in-Ashfield, Notts
18-22 (Tue-Sat): CHELMSFORD BEER FESTIVAL 2000, in the Sports Hall at the Anglia Polytechnic University, Park Road, Chelmsford.
20-22 (Thu-Sat): 26th KENT BEER FESTIVAL, in the cowshed at Merton Farm, Merton Lane, Canterbury
26-29 (Wed-Sat): WEAR VALLEY CAMRA BEER FESTIVAL, at the Bishop Auckland Town Hall.
28-30 (Fri-Sun): 24th COTSWOLD BEER FESTIVAL, at Postlip Hall, near Winchcombe, Glos

Great British Beer Festival 31st July – 4th August Olympia, London

Nearly 700 real ales, ciders and imported beers



Branch Diary

Everybody welcome to all socials and meetings!

June

Tuesday 5th LACEY GREEN SOCIAL & SWAN SUPPING DISTRIBUTION
 9:00pm Black Horse, 10:00pm Whip.
Wednesday 13th BRANCH MEETING
 8:30pm Lion, Waddesdon
Monday 18th BRANCH PUB OF THE YEAR PRESENTATION
 8:00pm Clifden Arms, Worminghall
Saturday 23rd BLACK COUNTRY TRIP
 Bookings (£18 per person) are now being taken for our very popular annual coach trip to the Black Country.
 The bus will pick up from Aylesbury at 10:00am, Wendover, High Wycombe at 10:30am and Saunderton, finally returning to Aylesbury around midnight (details on Page 16).
THIS TRIP IS ALMOST FULL – PHONE TONY GABRIEL FOR ANY REMAINING PLACES ON 01494 527884
Friday 29th BOURNE END PUB CRAWL
 7:30pm Start at Firefly (near station) - see page 16 for further details

July

Monday 9th WEEDON SOCIAL
 9:00pm Five Elms, Weedon
Friday 13th LOCAL BEER FESTIVAL SOCIAL
 8:00pm Oak, Aston Clinton
Monday 16th CADMORE END SOCIAL
 9:00pm Old Ship, Cadmore End
Friday 20th BIERTON PUB CRAWL
 7:00pm Old Moat House, 8:00pm Bob's Barn, 9:00pm Bell, 10:00pm Red Lion
Thursday 26th FORTY GREEN SOCIAL
 9:00pm Royal Standard of England, Forty Green
Tuesday 31st – Saturday 4th August GREAT BRITISH BEER FESTIVAL
 Olympia, London (Full details page 15)

August

Friday 3rd – BRANCH SOCIAL AT THE GBBF
 6:00pm Great British Beer Festival, Olympia

October

Friday 26th and Saturday 27th AYLESBURY VALE BEER FESTIVAL
 Eskdale Road Community Centre, Stoke Mandeville

Swan Supping

Swan Supping is distributed free of charge to pubs in the branch area. Published by the Aylesbury Vale & Wycombe branch of the Campaign for Real Ale and printed by Northridge Printing Services Limited, Unit 13-14, Bessemer Crescent, Rabans Lane, Aylesbury, Bucks HP19 8TF. Tel: 01296 424796

Circulation **3000** copies.

Edited by David Roe

Editorial Address : 16 Jasmine Close, Aylesbury, Bucks HP21 9SH.

Tel/Fax : 01296 484551

E-Mail : DWRSS@aol.com

Advertising rates are :- 1/16 page £5, 1/8 page £15, 1/4 page £25, 1/2 page £50, full page £90. Add 10% for front page adverts. 10% discounts for payment in advance. All bookings are taken as run-of-paper.

Copy deadline for next issue, due to be published on 1st August 2001 is 14th July 2001.

Subscriptions :- To receive editions of Swan Supping by post, please send SAEs to the Editor.

©Aylesbury Vale & Wycombe CAMRA 2001.

Opinions expressed in Swan Supping are not necessarily those of the editor, or the Campaign for Real Ale.

Acceptance of an advertisement in Swan Supping by a pub or its availability there does not guarantee CAMRA approval of the outlet.

The Carpenters Arms, Marlow

The only proper boozer left in town!



Home Made Sandwiches available
Pub Games, Real Fire, Patio

15 Spittal Street, Marlow, Bucks
Telephone : 01628 473649



MORRELLS

Morrells Varsity
& Bitter