



Swan Supping

FREE

Issue 18



Campaign for Real Ale

Aylesbury Vale & Wycombe Branch

JUNE/JULY 2000



THE UPS & DOWNS OF BREWING



Fullers have announced increased profits while *Whitbread* have decided to get out of brewing!

In their annual accounts for the year to March 2000, the London based brewery, *Fullers*, announced that trading profits were up 6% to £15.1m. This included a rise in the volume sales of *London Pride* by 5% at a time when cask beer sales have shown a marked decline.

Chairman Anthony Fuller said the group was happy to stand on the sidelines while the industry undergoes a consolidation bout and UK rivals *Bass* and *Whitbread* sell off their brewing interests.

Fullers have also said that it has been increasing its number of bars relative to its pubs in anticipation of extended drinking hours in once the legislation goes through.

Whitbread have sold their remaining breweries to *Interbrew* of Belgium.

Interbrew is the world's fifth largest brewer and the owner of the *Stella Artois* brand which has been brewed under licence by *Whitbread* since 1976.

Whitbread have accepted £400 million in cash for the breweries and intend to concentrate on their leisure brands including *Marriot*,

Travel Inn, *Brewers Fayre*, *Beefeater* and *Hogshead*.

They will continue brewing *Heiniken* lager until their contract with the Dutch giant brewer is concluded.

Interbrew will also pay an additional maximum £50 million dependent on the performance of operations which include breweries at Magor in South Wales, Samlesbury in the North West and Manchester.

Win tickets to the biggest pub in the world!! See page 5 for details



FIND US IN THE GOOD BEER GUIDE
MILLENNIUM EDITION

BEERS AVAILABLE IN JUNE/JULY

BRAKSPEAR BITTER 3.4%

MORRELLS VARSITY 4.3%

RUDDLES COUNTY 4.7%

BRAKSPEAR HOORAY HENLEY 4.8%

GREENE KING ABBOT 5.0%

MORLAND OLD SPECKLED HEN 5.2%

& MANY MORE !!!!



THE END OF THE WORLD BAR & RESTAURANT WORLDS END, WENDOVER

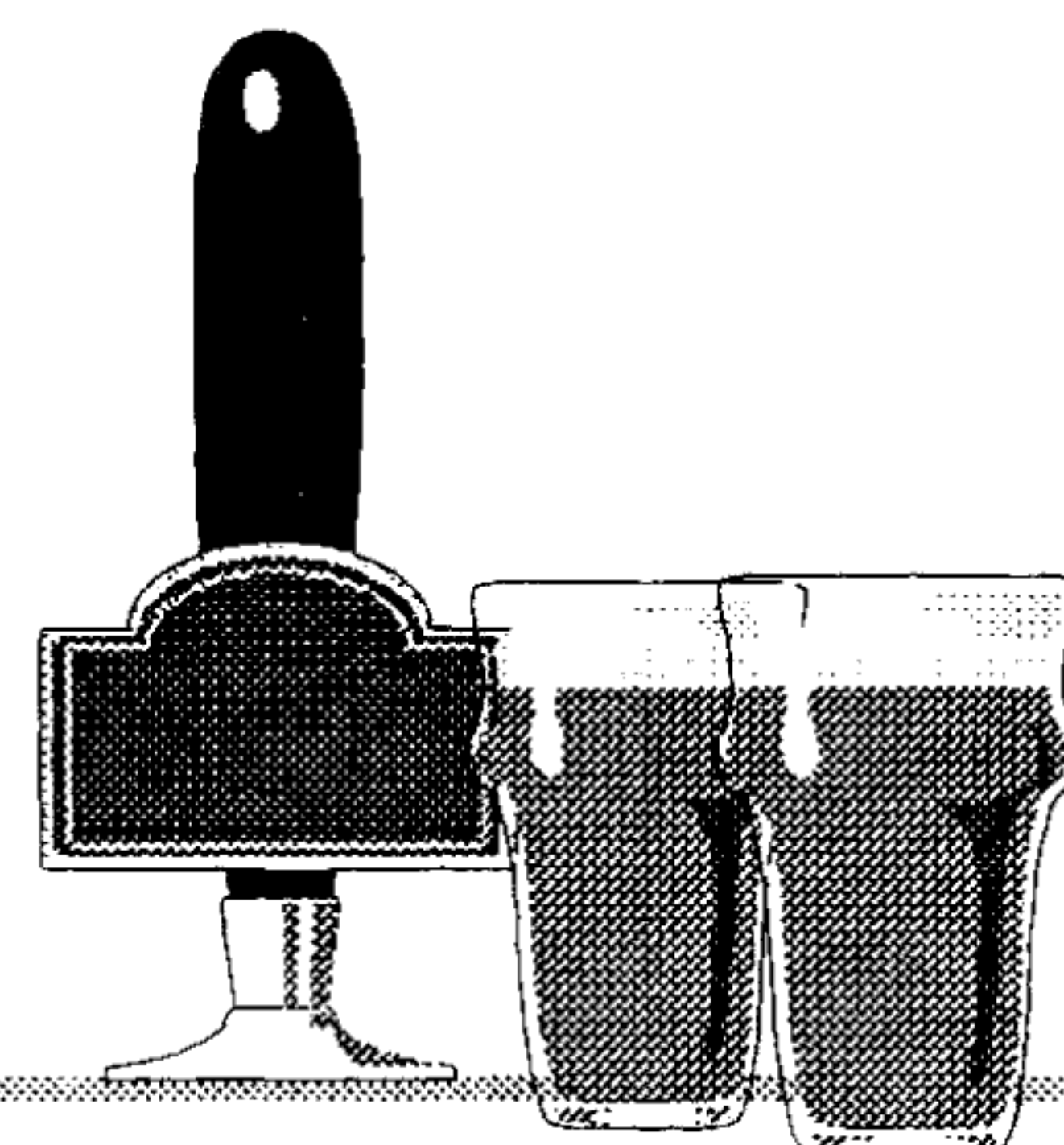


QUIZ NIGHT
EVERY WEDNESDAY

FOR RESERVATIONS AND INFORMATION ON
WEEKLY EVENTS PLEASE CALL

01296 622299

STILL FROM
ONLY
£1.20
PER PINT



Local News

ASKETT

The large skip outside the **Three Crowns** has gone and renovations continue. We have no details as to the future of this pub.

ASTON CLINTON

The **Bell** has reopened as part of **Bass Vintage Inns**, and has been renamed the **Duck In**.

The **Oak** will be holding a beer festival from Thursday 13th to Sunday 16th July.

There will be *eighteen real ales* on offer, including the full range from **Fullers**, plus *two traditional ciders*.

AYLESBURY

Aylesbury's only **Morrells** pub, the **Dairy Maid**, on Elmhurst Road has been closed for major alteration for the last few weeks. Manager Pete Jones says the work should have been finished by 8th June but is at least a week behind schedule. A new island bar is being constructed and a rear extension will house a new kitchen, cellar and store.

Weavers has had a recent change of management plus new menu. There is still no sign of any real ale!

FORD

The planning application for the change of use of the **Dinton Hermit** to a private house has been refused by the Aylesbury Planning Office.

GREAT KINGSHILL

The **Red Lion**, which specialises as a fish restaurant, has had an extension built.

HADDENHAM

The **Crown** has now closed and it is being refurbished as an Indian restaurant called the **Spice of Life**.

HIGH WYCOMBE

The **Iron Duke** has still not been sold. This is a potentially thriving business with a lively 'public bar' area and a comfortable lounge area. It always serves a good pint and is handy for the station, local shops and several takeaways.

The lease of the **Litten Tree** has been put up for sale.

The demolition of the **Morning Star** has now been completed. The site has been converted to residential use with a number of rather smart looking flats having been completed.

KINGSWOOD

The **Crooked Billet** has been refurbished recently and is now run by the pub group **Traditional Free Houses**.

LONG CRENDON

Owen & Jackie, previously at the **Crown**, Haddenham, have taken over the **Chandos Arms**. They are currently serving **Fullers London Pride** and **Greene King IPA**.

POSTCOMBE

England's **Rose**, on the London Road, is to hold its '**No Fare for Faro Bike & Beer Rally II**' on Friday 21st and Saturday 22nd July. Ten **Real Ales** and four bands and tickets are only £5.

PRESTWOOD

There is due to be a change of tenancy at the **Kings Head**. The present manager, Justin Bradley, should leave on June 9th, although this could be delayed until the new tenant arrives.

PRINCES RISBOROUGH

There is a new tenant at the **Bell** following Jimmy & Val Wilkie moving to the **Cuckoos Nest**, Gawcott.

Craig and Nicky Russell started at the **George & Dragon** on Tuesday, 16th May. They were previously at the **Queens Head**, Devizes, Wilts.

They are taking over from John & Julie Holbrook who managed the pub for eight years.

WADDESDON

The **Bell** is getting back on its feet under new landlord Nigel Bradshaw. He is currently selling **Fullers London Pride** and **Old Speckled Hen**.

Nigel previously ran a **Good Beer Guide** pub in Totternhoe, Beds, the **Old Farm Inn**.

WENDOVER

Renovations continue at the **George**. It has been repainted externally in cream/maroon, and gutted internally although the original walls remain. It has been suggested that the stone slab floor will be reinstated. Supposed to reopen 12th June although lot of work required by then. Apparently

Old Luxters Brewery



Traditional Ales and Bottle Conditioning

Tel 01491 638330

on a ten year lease to **Punch Taverns** (ex **Pubmaster**) who have already appointed a couple to run it.

The adjacent shop on the corner of Tring Road was also owned by **Allied** in the old days and used to be a **Victoria Wine**. It closed when **Victoria Wine** was taken over by **Threshers** (nee **Whitbread**) as we already have a **Threshers** in the village next to **The Bistro**. This is also being done up and suggestions vary as to whether it will be incorporated into the **George** or will become a separate retail outlet. Time will tell!

The **Rising Sun** is still empty and for sale. A sign has appeared with asking price of £385,000

WING

Following Steve Naghi's departure in April, the **Cock Inn** is now being run jointly by Alberto Marcuca and Stewart Mosley. Alberto assures us there will still be a wide range of beers to choose from, looked after by long term head barman Bernie.

On a recent visit, six beers were available - **Fullers London Pride**, **Shepherd Neame Spitfire**, **Courage Directors**, **Websters Bitter**, **Vale Edgars Golden** and **Batemans Yella Belly**.

WINGRAVE

The **Rose & Crown** will be having a mini beer festival between Saturday 24th June and Sunday 2nd July. There will be eight beers available.

WORMINGHALL

The village **Millennium Festival** will be held at the **Clifden Arms** between Saturday 24th June and Sunday 2nd July.

Among the events will be a fete, a quiz evening, wheelbarrow races, Old Time sing along with fish & chips, a wine tasting, Medieval Feast and a mini Olympics.

All the children of the village will get a free commemorative mug.

ENGLANDS ROSE POSTCOMBE

NO FARE FOR FARO BIKE & BEER RALLY II

FRIDAY 21st & SATURDAY 22nd JULY

10 REAL ALES FROM THE BEER TENT

4 BANDS PLAYING

Friday Night - **STONEWOOD**

Saturday Night - **HEADROOM BUZZ THE CRAPPIES**

BIKE STALLS RAFFLE TREASURE HUNT

BIKE SHOW: BEST IN SHOW, CUSTOM ETC.

FOOD

TICKETS £5.00

Phone Jackie: 01844 281383

FREE CAMPING

ENGLAND'S ROSE, LONDON ROAD, POSTCOMBE, OXFORDSHIRE
TEL: 01844 281383 E-MAIL: Jackie@englandsroseph.freemove.co.uk

RURAL PUBS DEBATE ON TELEVISION



Long Crendon Library was the venue for the filming of *Channel 5's 'Talk TV'* on Wednesday May 10th.

The programme carried debates on various matters concerning the countryside, including fox hunting, closure of village shops and the lack of knowledge of foreign languages.

However, the debate I, in my capacity as chairman of the local branch of *CAMRA*, the *Campaign for Real Ale* had been asked to contribute to was the one on the closure of so many rural pubs.

Rob Butler, the presenter of the programme, introduced this portion of the debate by explaining that twenty rural pubs are closing every month, with a lot of them being converted into private houses. He speculated on the effect 24 hour opening would have and mentioned *CAMRA's* current campaign to change the rules on business rates for rural pubs.

The pub trade was represented by Mick Rolley, landlord of the **White Hart**, Quainton, and Cherry Kelly, landlady of the **Mole & Chicken**, Easington.

Discussions included the massive effect of the opening of large town pubs which drain away a lot of the rural pub's natural trade, and the trend towards becoming restaurants which discourage casual drinkers and locals because of the prices. The proposed change to the **Beer Orders** to allow pubs belonging to pub chains to take a guest beer was also mentioned.

The actual debate took about twenty minutes, but this was cut for the program to just over five. Unfortunately, one of the parts that never made it past the cutting room was an ex-landlord explaining why he had been forced to leave the trade.

Ben Walter, a local branch committee member for many years, was also featured in the program in his capacity as one of the officers in the **Thame Tourist Information Office**. He talked about the expansion of Thame into a market town.

Another familiar face was **Paul Champion**, the landlord of the **Birdcage** in Thame. He talked about the history of his pub in its previous incarnation as the town prison.

The program was transmitted at 9am on Friday May 12th.

David Roe

The Oak, Aston Clinton Beer Festival



Lots of **REAL ALE** from all over the country
PASSPORTS available for 'serious drinkers' and a commemorative glass



Starts 6pm Thursday Evening
Food Available all sessions,
including a pig roast on Sunday lunchtime
GREAT FUN FOR ALL
INCLUDING MUSIC & CHARITY EVENTS
Aunt Sally Competition, Charity Tombola
Many other attractions

NO ENTRY FEE, JUST BUY A PINT, OR TWO, OR

Vic & Sue Hinde
welcome you to

The White Swan

10 High Street
Whitchurch
Tel: 01296 641228

Home Made Meals
Sunday Roast Lunches
Special Parties catered for
Large Attractive Beer Garden

1999 Good Beer Guide
Fullers Traditional Ales



Greene King
IPA & Abbot

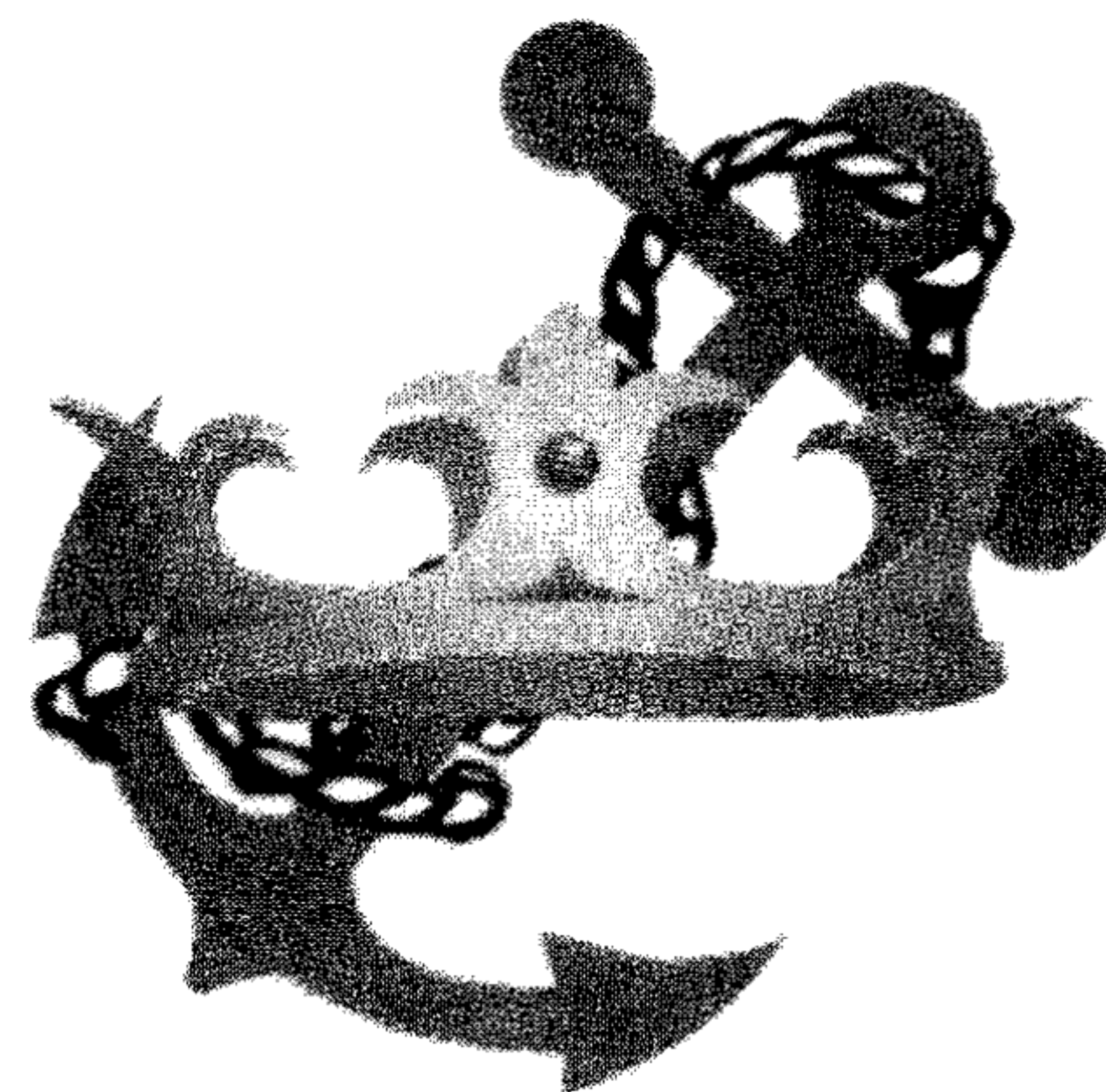


now available at
**The End of The World,
Worlds End, Wendover**
01296 622299



**The Chef
The Brewer
The Experience
The Garden**

**Crown and Anchor
Oxford Road
Marlow 01628 891161**



THE BIGGEST PUB IN THE WORLD



The Great British Beer Festival 2000

Tuesday 1st - Saturday 5th August

Grand & National Halls, Olympia, London

A beer drinkers paradise - Something for everyone!

A unique annual celebration featuring over 700 real ales, ciders and foreign beers, five days of live music, good beer and fun

* Biggest real beer festival in Britain - the largest volunteer-run beer festival in the world!

* 330 real ales from 150 different British brewers! Wheat beers, ginger ales, beers flavoured with herbs and spices, lots of tasty bitters, milds and stouts from all over the UK.

* Champion Beer of Britain. Final judging of the most prestigious beer competition in the UK takes place on Tuesday 1 August. The consumer's choice of the best British beers.

* 200 foreign beers!

* Special beer tasting sessions!

* No rip-off zone - full pints guaranteed.

* Lager & cider too! The festival features some of the finest continental lagers, plus forty traditional ciders and perries (pear cider), but you won't find the usual bland mass-produced brands.

* Live music every night

* Tickets available in advance - call the box office on 0870 904 0300

* Visit the festival website at www.gbbf.org

Dates Times Prices

(CAMRA members Prices in brackets)

Tue 1st August 5pm - 10.30pm £5 (£4)
Wed 2nd August 11.30am - 3pm £1.50 (£1)
Wed 2nd August 5pm - 10.30pm £5 (£4)
Thu 3rd August Noon - 10.30pm £6 (£5)
Fri 4th August Noon - 10.30pm £6 (£5)
Sat 5th August 11am - 7pm £4 (£3)
Season Ticket All Sessions £16 (£13.50)

WIN THREE PAIRS OF TICKETS TO THE PRESTIGIOUS TRADE SHOW ON TUESDAY AFTERNOON

Just write to the editor and say when the Aylesbury Vale & Wycombe Branch of CAMRA held their first meeting

The three closest entries win! (hint - it's over 25 years ago!!)

Derek and Carol French welcome customers both old and new to

The Red Lion, Bierton

New Extensive Menu

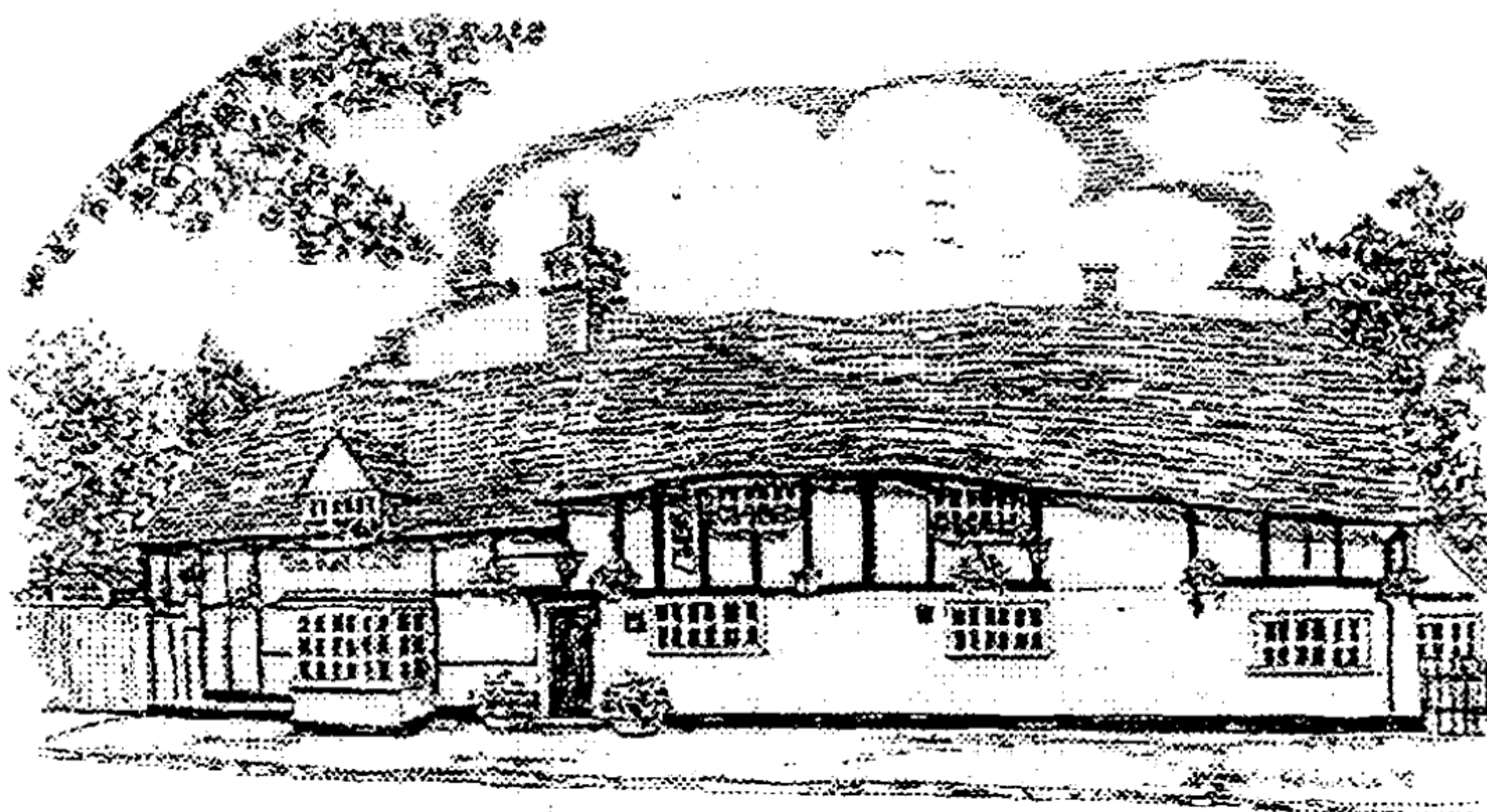
Daily & Weekend Specials

Sunday Roast £ 4-95

Opening Times

Monday to Thursday 11.30-3, 5-11

Open all day Friday to Sunday



Four Real Ales

Greene King IPA

Tetley Bitter

Ind Coope Burton Ale

Regular Guest Beer

*Quiz night every Wednesday
Folk Music every other Sunday
Traditional Homemade Pies every Weekday*

Darts, Dominoes & Crib

For more information or updates please visit us on our web site www.theredlionbierton.co.uk or ring 01296 394857

The Bell



Bierton

Dave & Vee White
191 Aylesbury Road, Bierton,
Aylesbury, Bucks
Tel: 01296 436055

Listed in the 2000 Good Beer Guide

Traditional village pub

Meals served 7 days a week:
Lunchtimes: 12.00 – 2.30pm
Evenings: 6.00 – 9.30pm

*All meals prepared and cooked
in our own kitchen (not frozen meals)*

Live music (rockabilly, c & w, blues etc)
every other Sunday
with special food available
11 & 25 June
9, 16 & 30 July

FULLER'S AWARD WINNING ALES
PLUS A DIFFERENT GUEST BEER EACH MONTH
FROM AN INDEPENDENT BREWER
JUNE: JENNINGS CUMBERLAND ALE
JULY: BRAKSPEAR BITTER

Mick and Wendy Rolley

The White Hart Quainton

(Nice Pub, shame about the Landlord)

**Adnams Bitter
Youngs Bitter
Guest Beers**

Evening meals served until 21:00
(except Thursday)

Bar Snacks available until 22:45.

Bed & Breakfast £25.00 p.p.p.n (inc V.A.T)
En Suite Room/Colour T.V./Tea/Coffee
English Tourist Board Approved (2 Crowns)

4 The Strand,
Quainton, Aylesbury
Bucks HP22 4AS

Tel : 01296 655234

**Please note: We are closed for
Thursday Lunchtimes**

The Full Moon Hare Lane, Little Kingshill

Opening Hours
Mon-Sat: 12-3, 6-11
Sun: 12-3, 7-10



Food Times
Lunchtimes 12-2 PM
Evenings 6.30-9 PM

Licencees, Alan & Pam Sandell, welcome you to a pub
with good food, good beer & good company.

An English country pub, set in the Buckinghamshire countryside,
full of character and offering a fine selection of real ales,
Bass, Adnams, Ringwood Best Bitter
plus two ever-changing **Guest Beers**,
lagers and wines, a food area and a real fire in winter.

An extensive range of home cooked dishes is available every day for
lunch or dinner, including home-made soups, main courses, snacks,
vegetarian and sweets at reasonable prices.

SENIOR CITIZEN LUNCH – EVERY WEDNESDAY

Phone 01494 862397

LOCAL £2,000 WINNER

CAMRA recently ran a national *Heritage Grand Draw* to raise money for pub preservation.

The top three prize winners were picked at the **CAMRA** A.G.M. in Derby by **Bill Tidy**, the man behind **Kegbuster** in *'What's Brewing'*, and the **Fosdyke Saga**, the **Cloggies** etc.

The first prize of £5,000 went to a **CAMRA** member who lives in the Heart of England, but the second prize of £2,000 went to a person from Aylesbury called **T. Davison**.

If the winner would like to contact us (and buy us a pint) we would be happy to meet them!

MILD MANNERED MARLOW

So it was May again and that meant **Mild**, and I'm not just talking about the climate.

Being Marlow born and bred, it thrills me greatly to see the pubs in the town having an upturn in both trade and its choice of draught ales, which sometimes includes **Mild**.

A friend and I regularly frequent various Marlow watering holes on a Friday night in search of the ultimate pint.

During our recent travels we've encountered *Broadstones-Stonebridge Mild*, *Cains-Dark Mild*, *Skinners-Betty's Mild* and *Truemans-St. George's Mild*.

This a few years ago would have unthinkable, as the

limited choice of beer and its poor quality as Fizz Farms seemed to rule the roost.

But as some pubs lead the way with their abundance of guest beers kept and served correctly, other pubs have had to re-think and follow suit by improving the quality of their hand-pulled beers to hold the real ale connoisseurs in their licensed premises.

As the real ale trade has a pleasing Second Coming in Marlow, the chance of more **Mild** appearing on the hand-pumps at my local pubs seems to be greatly increased.

So here's to the new dawn on the beer front in Marlow and mine's a pint of **Mild**.

Alan Sheppard



Book Review



GOOD BOTTLED BEER GUIDE

Editor: **Jeff Evans**
Published by **CAMRA**
books and sponsored by
Tesco
ISBN 1-85249 - 157 - 4

This hardback, pocket sized guide, is something of a labour of love by ex *Good Beer Guide* editor **Jeff Evans** who has attempted to list every Bottle Conditioned Beer (BCB) available in Britain's supermarkets and off-licences.

Following a brief introduction with notes on storing and tasting BCB's, **Jeff** goes on to list all 'known' BCB's from A-Z. This is a far cry from only a few years ago when only 5 BCB's were regularly available in the UK,

including the now much lamented *Courage Original* and *Courage Russian Imperial Stout*. Now, one brewery alone, **Pitfield** in North London, appear to offer no less than 15 of its own beers in BCB's.

Of the many breweries covered, some names may even be unfamiliar to regular attendees of beer festivals.

A handy little book for browsing & reference rather than bedtime reading. Even **Jeff Evans** admits that the BCB market is changing rapidly and it is quite possible that the wonderful bottle you picked up in **Tesco** that claims to be BCB may not be in this book! Roll on the next edition!

John Wood

THE BRICKMAKERS ARMS

Wheeler End Common, High Wycombe,
Bucks, HP14 3ND

Telephone & Fax : (01494) 881526

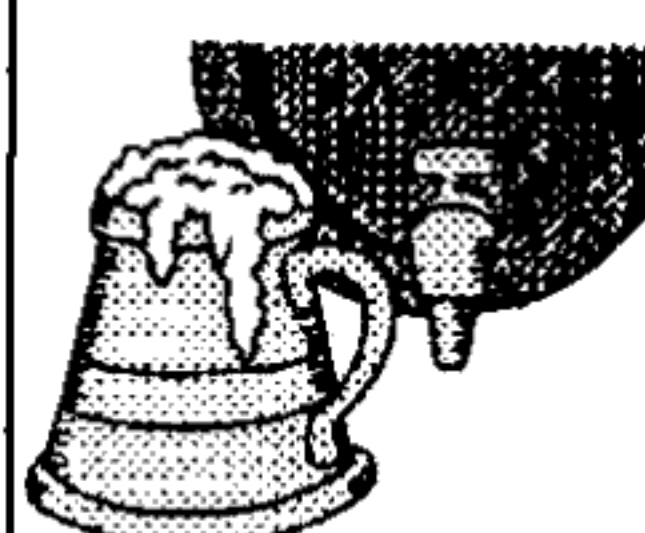


Open 12 - 3, 5.30 - 11 Weekdays
& all day Saturday & Sunday

Full range of real ales including:
Brakspears, Morrells & Adnams
and *Fullers London Pride*
Plus *Draught Budvar*

A family pub run by
Gary and Jules Bishop

Real Ales to Take Home



Firkins, Polypins & Polycasks available
Call in or phone for price lists

01494 437228

ORDER NOW

Up to SIX real ales available on draught with over
50 British Bottled Beers in stock plus a fine range of wines
All you need for any celebration from

WYCOMBE WINES

20 Crendon Street, High Wycombe

The Clifden Arms



Why not celebrate your wedding, birthday, christening or other special occasion in the delightful surroundings of The Clifden Arms. A marquee is available for larger functions. Call us on 01844 339273.

Barbara & Tony invite you to The Clifden Arms Worminghall.

Take in the atmosphere of a fine English country pub. Our food is as appealing as the setting with a large garden and fun play area for the children.

Enjoy a traditional pub lunch in the bar or choose from our comprehensive menu in the comfort of the restaurant. A children's menu is always available.

At the weekend, why not bring the family and enjoy our traditional Sunday lunch.

Special lunch board every Monday to Thursday (plus Wednesday evening), offering two meals for the price of one.

Take-away fish & chips Monday to Friday, 6.30 – 8.30 pm.

Real ales on tap including weekly guest beers

Meals served from 12 – 2pm & 6.30 – 9pm

The Clifden Arms



REAL ALE BONANZA
WYCHWOOD SHIRES
& VARIOUS GUEST BEERS

FROM
ONLY

£1.00 A PINT
KINGSBURY SQUARE, AYLESBURY



HAIL AND FAREWELL

The **Cock at Wing**, the local **CAMRA Pub-of-the-Year 1999** changed hands in April.

We said in the last issue of Swan Supping that we expected that Steve Naghi would be leaving at the end of April, but were caught somewhat unawares when we heard that his last day was to be the 16th. Luckily a few local members were able to visit the **Cock** on Steve's last Friday to wish him well.

Steve turned the **Cock** into a thriving business and one of the most successful and popular pub in the district. It was not always so.

Originally a 15th century building, it became a coaching inn and for many years was village local belonging to *Wethered* of Marlow. When the Marlow brewery closed in 1988, *Whitbread* refurbished the pub as one of their Roast Inns.



*Last years presentation of the Branch Pub of the Year award to Steve Naghi
By Branch Chairman David Roe*

Although this formula has worked well elsewhere, it didn't seem to in Wing. In the early 90s there was a serious possibility that the **Cock** would close.

Fortunately a 'white knight' in the form of Steve Naghi came to the rescue.

Now a free house, Steve was able to experiment with a multitude of unusual beers. Although there were always a couple of regular fixtures such as *Webster's Yorkshire Bitter* and *Courage*

Directors, the **Cock** quickly acquired a reputation for supplying excellent beers from independent family brewers and many little known micro brewers.

By early 1995 local **CAMRA** members recognised (perhaps belatedly) that this pub should be in the *Good Beer Guide* and it appeared in the 1996 edition and has been there ever since.

With a combination of good beer, good food, seasonal beer festivals and Steve's exuberant personality, the **Cock** went from strength to strength.

All the customers will surely miss Steve and Gwenn and wish them "good luck" in whatever they decide to do next. And everyone from the branch would like to thank you for saving the **Cock** from oblivion.

Nick Holt



Formerly Brewers and now the leading Independent Distributor of CASK CONDITIONED Ales in the Thames Valley.



COOPER'S CHOICE of Guest Beers each & every month.



Beer Festivals a Speciality including hire of Stillages • Bunting • Banners • Blackboards and insulating jackets.

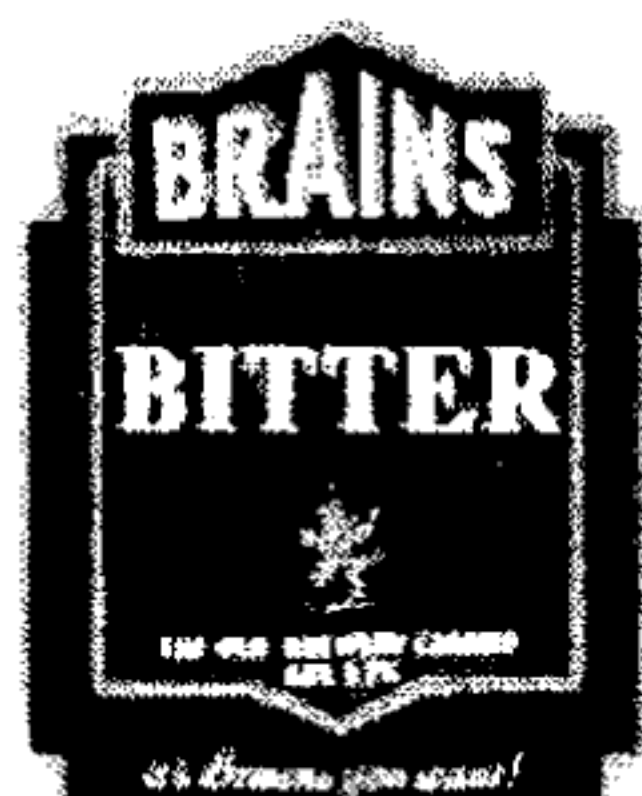
*A Family Firm
~ since 1851 ~*

80-100 High St., Aylesbury, Bucks
HP20 1QZ

Tel: 01296 420261

Fax: 01296 397012

Email: Sales@dayladrinks.co.uk



The Carpenters Arms, Marlow



Home Made Sandwiches available
Pub Games
Real Fire, Patio

15 Spittal Street, Marlow, Bucks
Telephone : 01628 473649



MORRELLS

*Oxfords Finest Beers
Morrells Varsity & Bitter*

MIDLANDS ALE TRIP

For many years, fellow member Giles du Boulay and I, from time to time, have taken a day off from our labours and gone off in search of new (to us) pubs where we could sample local beers and food.

When we espied the article in the February 'What's Brewing' featuring the renovation and the conversion into a pub of the station buildings at Codsall by **Holdens** we felt that we just had to go to sample the highly recommended beer and food.

And so it was that one Friday saw Giles and I meeting at Aylesbury station in time to catch the train to Princes Risborough. There we changed to catch the Birmingham train.

As there was some time to wait we fortified ourselves with a bacon roll and a coffee from the coffee shop on the station. We caught the train from Princes Risborough which got us to Birmingham Moor Street.

We walked to New Street station where we took a further coffee on board as we had to wait 'till 11:37 for the departure of the Codsall train. As the train took us towards our refreshment the ticket inspector

appeared and when he saw our destination he commented "going for the beer are you - that's a very popular watering hole".

12:05 saw us getting off the train and at 12:06 the wonderful sound of the first pints being pulled was heard.

This was *Holdens Bitter*. It was in superb condition and 'hardly touched the sides'! Our second was *XB* followed by the *Special Bitter* and then *Railway Bitter*. There was a guest beer, *Jennings Cocker Hoop*, which, as it was there we thought we ought to try, so a pint of that followed. We also sampled the food which was excellent.

We went for the omelettes to make sure that our ale capacity was not affected. We paced ourselves to finish the **Jennings** in time to catch the 14 28 train for Birmingham as the trains run at two hourly intervals and we had further work to do there.

Once there we tottered off to the **Woodman** where we took a well kept and presented pint of *Ansell's Mild* in very congenial surroundings. From there we went to the

White Swan as I hadn't tasted *Banks's* for some time. We had *Banks's Original* followed by their *Bitter* which were superb and dispensed by handpump. We thought that we should pay a visit to **The Anchor** on our way back to the station so a nice pint of *Ash Vine Piggin* was sampled.

We caught the 18:40 from Snow Hill station which got us to Risborough at 20:18 with a wait until 20:45 for the Aylesbury train

On arrival at Aylesbury, Giles went off in pursuit of some food and I caught the next train to Wendover. While walking towards home I felt a terrible dryness to the throat so, to remedy this dreadful situation, I carried on to the **Marquis of Granby** where two very nice pints of *Vale Spring Gold* which made me feel much better.

In all, a really good day out. Perhaps we could organise a Branch expedition to Codsall and Birmingham- we may be able to get a discounted fare if there are more than ten of us.

Mike Clemence



Aylesbury Golf
Centre
Hulcott Lane,
Bierton.
Aylesbury.
HP22 5GA.
01296 423350

* Sky T.V.*

Pool Table

Open All Day Food & Drink

Always & Warm and Friendly Atmosphere

*Real Ale Buy a 4pt pitcher & only pay for
3pt on any of our 3 Ales*



NATIONAL NEWS

Hall (& Woodhouse) of Shame Drinkers condemn damaging takeover of King & Barnes

CAMRA is building plans to help save one of Britain's most treasured independent breweries from closure.

The news follows a shock announcement that Dorset brewer Hall & Woodhouse has acquired King & Barnes in Horsham and intends to close the brewery.

Mike Benner, Head of Campaigns and Communications said, "We are shocked that Hall & Woodhouse have been invited to acquire the King & Barnes brewery, pub estate and brands following an unsuccessful bid by rivals Shepherd Neame.

There appear to be no benefits for drinkers following this take over as the brewery will be closed and valued King & Barnes beers are likely to be lost forever."

King & Barnes rejected an earlier bid from Shepherd Neame despite it having pledged its intention to keep the Horsham brewery open.

Hall & Woodhouse intends to 'review' the King & Barnes brands. K&B has developed an unmatched reputation for quality bottled ales.

Mr. Benner added, "This smacks of hypocrisy. King & Barnes, with CAMRA's support, fought tooth & nail to keep Sheps away from their door and have now accepted an offer which promises to be even worse for drinkers."

CAMRA is calling for an urgent meeting with Hall & Woodhouse to discuss the future of the brewery and the K&B brands and will be urging them to keep the brewery open and sell it to Shepherd Neame.

Mr Benner said, "This is not just about money, it's about peoples' jobs and choice for local drinkers. It is well-known that Shepherd Neame could use the extra capacity the Horsham brewery offers and that solution could save jobs and keep this prized brewing gem open."

JOIN CAMRA TODAY

Just fill in the form below and send your remittance (payable to CAMRA) to Membership Secretary, CAMRA, 230 Hatfield Road, St Albans, Herts, AL1 4LW

Rates are Single £14, Joint £17 (at same address), Student/OAP/Unemployed/Disabled £8, Joint OAP £11 (at same address), Under 26 £8 date of birth

Name(s).....

Address

..... Postcode

/We wish to join the Campaign for Real Ale, and agree to abide by the Rules.

/We enclose a cheque for £..... Date

Signature
AYL (SWAN SUPPING)



Useful Addresses

CAMRA HQ:
230 Hatfield Road, St Albans, Herts
AL1 4LW.
Tel: 01727 867201
Fax: 01727 867670
E-mail: camra@camra.org.uk
Internet: <http://www.camra.org.uk>

PLANNING DEPARTMENT
For comments, complaints or objections about pub alterations or developments -
Aylesbury:
AVDC Planning Dept, Exchange St,
Aylesbury
HP20 1UB
Tel: 01296 585406

TRADING STANDARDS
For complaints about short measure, price lists, strength lists (ABV), etc.
Aylesbury:
County Hall, Walton Street, HP20
1UP Tel: 01296 383212
Oxford:
PO Box 618, County Hall, OX1 1DX
Tel: 01865 815000 (Mon - Fri
8:30am-5pm)

ADVERTISING STANDARDS AUTHORITY
For complaints about deceptive advertising-
Advertising Standards Authority
Brook House, 2-16 Torrington Place
London WC1E 7HN



Vale Brewery of Haddenham offer Award Winning local ales, made from only the finest malted barley and whole English hops, in ready to drink party packs. To order, telephone 01844 290008 giving a minimum 24 hours notice for "bright" beer.

Price List (Inc. VAT)	(72 pt.) ABV	(36 pt.) Firkin Poly-pin/box	(16 pt.)
Notley Ale	3.3% £71.00*	£41.00	£21.00
Wychert Ale	3.9% £73.00*	£43.00	£22.00
Edgar's Golden Ale	4.3% £75.00*	£45.00	£23.00

Speciality Beers

Black Swan - Dark Mild	3.3% £72.00*	£42.00	£21.00
CAMRA Double Gold Medal winner !			
Black Beauty - Porter	4.3% £76.00*	£46.00	£23.00

Bottled Beers

Halcyon Daze - English Ale.	4.3% 12 x 500ml Case	£18.00
Good King Senseless	5.2% 12 x 500ml Case	£20.00

EST. 1979

Alan Bell SPECIALIST FOR

TRADITIONAL HAND WRITTEN PUBLICITY

Black Boards PROFESSIONALLY THEMED/ HEADED ONLY OR WRITTEN UP FOR ANY PERMANENT/ TEMPORARY PROMOTING

Posters BRUSH WRITTEN FOR INSIDE OR OUT ADVERTISING DAGLO/PLAIN OR ON SUPPLIED BLANKS

FOR THAT SPONTANEOUS LOOK!

GENERAL SIGNWRITING

01494 531287

"GROVE COTTAGE"
10 GROVE ROAD
HAZLEMERE
HIGH WYCOMBE
BUCKS HP15 7QY





Beer Festival Diary

June

1-3 (Thu-Sat): NORTHAMPTON NUNN-SUCH ISLAND BEER FESTIVAL, Becket's Park, Northampton.
1-3 (Thu-Sat): 14th STOCKPORT BEER & CIDER FESTIVAL, at Stockport Town Hall, Wellington Road South (A6)
1-3 (Thu-Sat): 25th WOLVERHAMPTON BEER FESTIVAL, at the Wulfrun Hall, Mitre Fold, Wolverhampton.
3 (Sat): 7th RARE BREEDS BEER FESTIVAL, at the Rare Breeds Centre, Woodchurch, Kent.
5-10 (Mon-Sat): THURROCK BEER FESTIVAL, at Thurrock Civic Hall, Blackshots Lane, Grays, Essex (nearest stn Grays, London Tilbury + Southend line).
8-10 (Thu-Sat): DUDLEY BEER FESTIVAL, under canvas in the Castle Courtyard at Dudley Castle/Zoo, entrance via Fellows pub car park, off Castle St (centre of Dudley).
8-10 (Thu-Sat): 4th SOUTHAMPTON BEER FESTIVAL, Guildhall, Southampton
14-17 (Wed-Sat): 8th CATFORD BEER FESTIVAL, at Lewisham Theatre, Rushey Green, London SE6.
16-17 (Fri-Sat): RUNCORN BEER FESTIVAL (Beer By The Bridge), the FIRST Halton Beer Festival will be at The Community Centre, Grangeway, Runcorn, Cheshire.
17-18 (Sat-Sun): LEIGHTON BUZZARD BEER FESTIVAL, in conjunction with Leighton Buzzard Narrow Gauge Railway, at Page's Park Station, Billington Rd, Leighton Buzzard. Probably the smallest festival of the year, with just 10 firkins of beer, but steam trains' running both days! Open Sat 11-10pm; Sun noon-9pm. Admission to the festival is free.
21-24 (Wed-Sat): 6th ACCRINGTON BEER FESTIVAL, Town Hall, Accrington.
22-24 (Fri-Sun): 24th LOUGHBOROUGH & NORTH LEICESTERSHIRE CAMRA BRANCH BEER FESTIVAL, Town Hall, Market Place, Loughborough.
23-24 (Fri-Sat): 4th SOUTHDOWNS BEER & CIDER FESTIVAL, Old Corn & Hop Exchange, Lewes Town Hall, Lewes (5 mins from Lewes Stn).
30-July 1 (Fri-Sat): FIRST KINGSTON BEER FESTIVAL, at the Surrey County Staff Club, Penrhyn Road, Kingston upon Thames (adjacent to County Hall)

July

1 (Sat): 2nd DEVIZES BEER FESTIVAL, at The Wharf, Devizes, Wiltshire.
5-9 (Wed-Sun): 23rd DERBY BEER FESTIVAL, Assembly Rooms, Market Place, Derby
7-9 (Fri-Sun): BOSTON BEER FESTIVAL, at the Central Park, Boston.
7-9 (Fri-Sun): LOUTH DISTRICT BEER FESTIVAL, Riverhead, Louth
14-15 (Fri-Sat): EXETER & EAST DEVON SUMMER FESTIVAL, Coaver Club, Matford Lane, Exeter.
15 (Sat): MANSFIELD & ASHFIELD SUMMER FESTIVAL, Kirkby Blues Festival, Derby Road, Hollinwell, Kirkby-in-Ashfield, Notts.
18-22 (Tue-Sat): CHELMSFORD BEER FESTIVAL 2000, Anglia University, Park Road, Chelmsford
20-22 (Thu-Sat): 26th KENT BEER FESTIVAL, in the cowshed at Merton Farm, Merton Lane, Canterbury.
28-30 (Fri-Sun): COTSWOLD BEER FESTIVAL, Postlip Hall, near Winchcombe, Gloucestershire



Branch Diary

Everybody welcome to all socials and meetings!

June

Tuesday 6th BRANCH COMMITTEE MEETING
 8:30pm Swan Hotel (upstairs room), Thame
Thursday 15th JOINT SOCIAL
 8:30pm Three Horseshoes, Bennett End, 10:00pm Crown, Radnage
Tuesday 20th DOWNLEY COMMON SOCIAL
 8:30pm Le de Spencer Arms, Downley Common
NOTE - THESE DATES DIFFER TO WHAT WAS INCORRECTLY SHOWN IN 'WHATS BREWING'
Saturday 24th BLACK COUNTRY COACH TRIP
 Sorry - SOLD OUT! It will be run next year if you missed out!
Wednesday 28th WINGRAVE MILLENNIUM BEER FESTIVAL
 8:30pm Rose & Crown, Wingrave

July

Wednesday 5th BRANCH COMMITTEE MEETING
 8:30pm Horse & Jockey, Tylers Green
Thursday 13th WING SOCIAL
 8:30pm Cock, Wing
Friday 21st WESTON TURVILLE WALKABOUT
 8:00pm Plough, 8:45pm Five Bells, 9:30pm Chandos Arms,
 10:15pm Chequers
Saturday 29th LUNCHTIME SOCIAL
 Noon - Shepherds Crook, Crowell

August

Wednesday 2nd BRANCH GBBF GET TOGETHER
 5:30pm onwards - Great British Beer Festival, Olympia (Festival details on Page 5).
 A table will be booked in the CAMRA lounge. Contact editor for further details.

October

Friday 27th/Saturday 28th VALE OF AYLESBURY BEER FESTIVAL
 Stoke Mandeville Community Centre. A map will be provided in the next issue.
 Charity beer festival held in conjunction with the 'Friends of Florence Nightingale House'
 Over thirty Real Ales plus Ciders & Perry

Swan Supping

Swan Supping is distributed free of charge to pubs in the branch area.
 Published by the Aylesbury Vale & Wycombe branch of the Campaign for Real Ale and printed by Northridge Printing Services Limited, Unit 13-14, Bessemer Crescent, Rabans Lane, Aylesbury, Bucks HP19 3TF.
 Tel: 01296 424796

Circulation **3000** copies.

Edited by David Roe
 Editorial Address : 16 Jasmine Close, Aylesbury, Bucks HP21 9SH.
 Tel/Fax : 01296 484551 E-Mail : DWRSS@aol.com

Advertising rates are :- 1/16 page £5, 1/8 page £15, 1/4 page £25, 1/2 page £50, full page £90. Add 10% for front page adverts. 10% discounts for payment in advance.

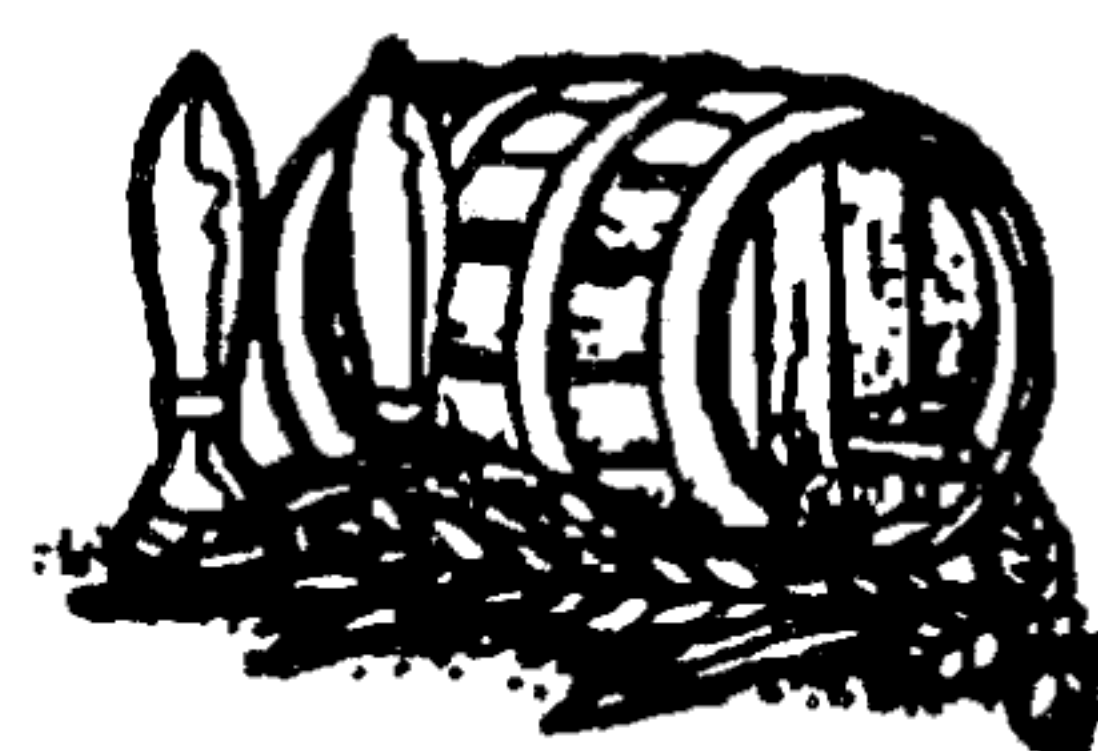
Copy deadline for next issue, due to be published on 1st August 2000 is 14th July.

Subscriptions :- To receive editions of Swan Supping by post, please send SAEs to the Editor.

©Aylesbury Vale & Wycombe CAMRA 2000.

Opinions expressed in Swan Supping are not necessarily those of the editor, or the Campaign for Real Ale.

Acceptance of an advertisement in Swan Supping by a pub or its availability there does not guarantee CAMRA approval of the outlet.



Rose & Crown Wingrave

(Off A418 Aylesbury to Leighton Buzzard Road)

2000 Good Beer Guide
 Cask Marque Approved



Runner-up in the
 Aylesbury Vale
 Pub of the Year Competition

WINGRAVE MILLENNIUM MINI BEER FESTIVAL

Saturday 24th June - Sunday 2nd July

FOR DETAILS PHONE
 GEOFF SMITH
 (Member of the British
 Institute of Inn Keeping)

01296 681257

