



Issue 8

# Swan Supping



Campaign for Real Ale

Aylesbury Vale & Wycombe Branch

OCT/NOV 1998



## FULL PINT UPSET



CAMRA, The Campaign for Real Ale is renewing its calls for laws to protect drinkers from short measures in pubs.

The announcement follows the news that major pub chain Wetherspoons is to remove oversized lined beer glasses from its pubs.

Mike Benner, Head of Campaigns, said, "We are very disappointed at Wetherspoons' decision to axe lined glasses as the company has tried to lead the industry in the right direction. The news clearly indicates a

need for proper legislation to stop drinkers being ripped off. Wetherspoons pubs will no longer be a guaranteed safe haven from short measures."

Legislation would mean all pubs would have to serve full pints and companies would be operating on a level playing field.

In addition, Mike Benner said, "Wetherspoons have claimed that complaints in their pubs have gone up since they introduced lined glasses. If this is true, it proves that drinkers do care about this

and that they are confused. Legislation that clarifies a pint is the only way forward. A pint should be 100% liquid, nothing less will give drinkers a fair deal."

CAMRA research shows:

- 8 out of 10 pints are less than 100% liquid
- 1 in 4 pints are less than 95% liquid - the industry's own guidelines
- 84% of people think that a pint should be 100% liquid



Aylesbury Beer Festival

23/24 October

Details on Page 3

**Swan  
Supping's  
Circulation  
now 2200**



**THE END OF THE WORLD  
BAR & RESTAURANT  
WORLDS END WENDOVER**

BOOK NOW FOR YOUR CHRISTMAS  
AND NEW YEAR PARTY  
MENUS NOW AVAILABLE



**The Finest Ales From**



NOW IN:

BRAKSPEAR BITTER 3.4% ABV

BRAKSPEAR SPECIAL 4.3% ABV

BRAKSPEAR REAPER'S REWARD 5.0% ABV

NEW !!! EXCLUSIVE IN AYLESBURY VALE NEW !!!

**HOBBS SMOOTH ALE 4.1% ABV**

FOR  
RESERVATIONS  
AND INFORMATION  
ON WEEKLY  
EVENTS PLEASE

CALL

**01296**

**622299**



FROM ONLY  
**£1.20**  
PER PINT





## Local News

### AYLESBURY

There is to be a new pub built on the junction of Bicester Road and Jackson Road near the Haydon Hill part of the town. Local residents have expressed fears regarding the increased traffic, especially as two young sisters were tragically killed near the site last year.

The public house forms part of a development for community use and will be known as a 'Family & Friends' pub and will be run by Morlands. No news yet as to the final choice of name.

There is no definite news so far regarding the possibility of a 'Newt & Cucumber' pub to be built in the centre of Aylesbury. The licence has been applied for by Morlands, and we are hoping to have more news next issue.

The **Queens Head**, Temple Square, will have the following guest beers available during the months of October and November: *Exmoor Ale*, *Titanic Lifeboat*, *Elgoods Cambridge*, *Burton Bridge XL Bitter*, *Jennings Cumberland*, *Tolly Cobbold IPA*, *Ridleys ESX*, *Rebellion Smugglers* and *Maclay's Broadsword*.

**Weavers**, formerly the **Borough Arms**, is to be themed as a Mr Q's pool palace.

It is strongly rumoured that **Hazells** club is due to be demolished and replaced by houses.

**Butlers**, formerly the Green Man, in Market Square has a new landlord.

### HIGH WYCOMBE

The **Beaconsfield Arms**, which was the subject of an article last issue, has now got a temporary landlord for the next eight weeks. The council meeting to decide on planning permission has been deferred until early October. It is proposed to extend the pub sideways nearer to the house next door to make room for the pool tables. The kitchen will be removed and replaced by a microwave behind the bar and a 'hot box'.

Prospects look bleak, as there has been no sign of a reprieve. It looks like a local community pub is destined to become a Mr Q's pool emporium, when in the long term, a minor refurbishment would prove more cost effective. Time will tell!

The **Bell**, Frogmore, reopened on Thursday 17th September and has a new manager in Peter Rayner.

Frogmore could gain another pub called the **Litten Tree**. According to newspaper reports, what is planned is that it should be a large 'traditional pub' with quality food,

disabled facilities, air conditioning and smoking (sic) areas.

On the High Street, the **Hobgoblin** is undergoing some changes. The kitchen is being moved upstairs and the old kitchen area is being opened up as a drinking area. An interior wall is to be removed and this change will leave the fireplace in the middle of the floor area.

The **Hogshead** has new managers (since July) in Elizabeth Bennett and Stephen Spencer.

**Sainsburys** have improved the bottle conditioned beer front by offering **Shepherd Neame Spitfire**, **Marstons Oyster Stout**, **Morlands Hens Tooth** and **Fullers 1845 Celebration Ale**.

### SKIRMETT

The **Crown** is closed and is up for sale as pub and as cottages.

### WHITCHURCH

The **White Horse** is under new management.

### WOOBURN GREEN

The **Mother Redcap**, which closed in March due to lack of trade, may become a curry restaurant. The new owners also run the Curry Centre in High Wycombe. Real ale and curry have a long and happy association, it is just a shame that both cannot be combined here. Still, it could have been worse, a major hamburger chain also expressed interest!

### LANE END

The **Chairmakers Arms** has been lost as a pub and has been converted into a private house. Two of our members were very disappointed when they turned up there looking for real ale and the lady of the house didn't even offer them a sherry!

The **Blacksmiths Arms** has become a private house.

### LITTLE KIMBLE

The **Kimble Diner**, which replaced the **Crown**, has been reopened as the **Crown and Diner** by a couple from the Lake District, David Bunyan and Denise Sulieman. There are reported to be three cask ales, real fire, no pool table and breakfast is available all day.

### CADMORE END

The famous **Old Ship**, a regular GBG pub due to its gravity service on the full range of **Brakspears** ales, had a lucky escape when a car went out of control late at night on

the busy B482 Marlow Road.

It careered down a grassy bank and the front wall where the car hit will have to be rebuilt. The landlord, Ken Smith, said that two cars parked outside were damaged with his being written off.

It could all have been far worse as Ken's wife Diane was outside saying goodbye to friends only moments before and could easily have been killed.

There have been calls for traffic management schemes along the road which is used by drivers wanting to avoid Handy Cross.

### FORD

The **Dinton Hermit** has been offered for sale in the 'Licensee' for £280,000.

### CUBLINGTON

The **Unicorn** now has planning permission for an extension.

### CHRISTMAS COMMON

The current manageress of the **Fox & Hounds** has been granted the tenancy until further notice.

### VILLAGE PUB COMPETITION

The judging panel met on 15th September to pick the finalists in the Aylesbury Vale Village Pub competition held in memory of Councillor Ted Payne. The final results will be decided at a meeting on 7th October.

The judging panel consists of Councillors and representatives from Mix 96, the Bucks Herald, the British Institute of Innkeeping and CAMRA. Last years winners Pat and Danny Kinnard from The Black Boy, Oving are members of the judging panel and therefore the pub is not eligible for this years competition.

The twelve finalists in this years competition are;

*The Swan, Gendon Underwood*  
*Eight Bells, Long Crendon*  
*Old Red Lion, Great Brickhill*  
*The Old Crown, Little Horwood*  
*Wheatsheaf, Maids Morton*  
*White Hart, Quainton*  
*Old Hat, Preston Bisset*  
*Rose & Crown, Ivinghoe*  
*The Bell, Cheersley*  
*Crooked Billet, Kingswood*  
*Village Swan, Ivinghoe Aston*

## 'Grandma's Quilt'

at the

## KING'S HEAD

Prestwood

Marston's Real Ales

including

Owd Roger

Pedigree

Bateman's Dark Mild

Finest Homestyle

rural American

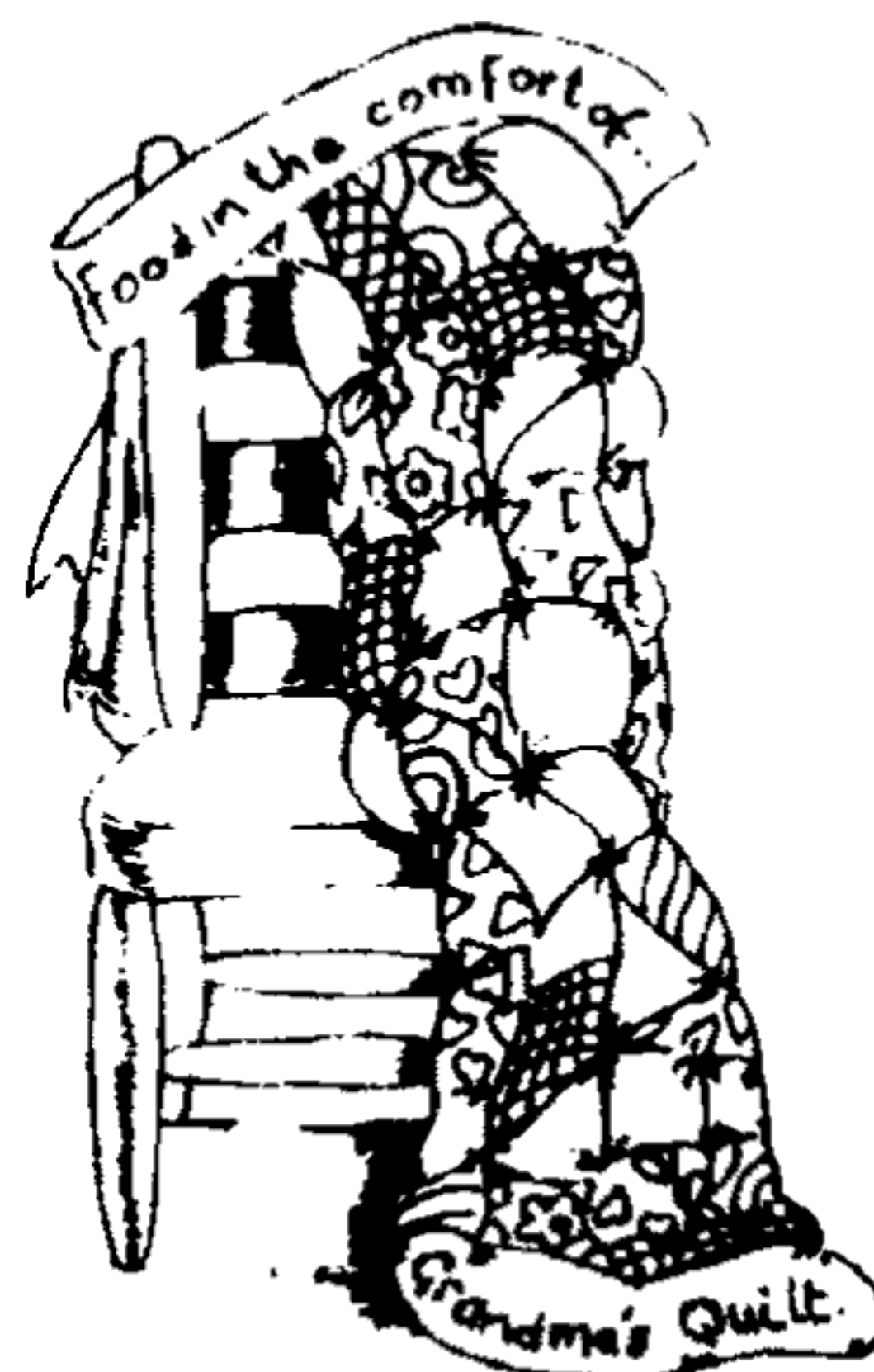
and English Fare

ALL DAY

EVERY DAY

Comfort and friendly service  
with a difference

01494 868101





## AYLESBURY BEER FESTIVAL

The year is heading towards that magical time that is Halloween. This means only one thing - it is time for the Aylesbury Beer Festival!

This will be the fifth annual festival and will be the fourth to be held at the Ranch House on Lower Road, Stoke Mandeville.

As before, this festival is being run by The Friends of Florence Nightingale House in aid of the Aylesbury Hospice. We, as the local CAMRA branch, are again co-operating by helping set up and prepare the beer and then serving it on the day.

In a change to previous years, we are introducing differential pricing on the beer. This will mean that the weaker milds will be priced at only £1.20 per pint, most other beers will be £1.60 (only a 10p increase on previous years)

**BEER FESTIVAL**  
**RANCH HOUSE, AYLESBURY**  
**23/24 OCTOBER 1998**  
**BEER STARTS @ £1.20 / PINT**  
**6PM - 11PM FRIDAY**  
**11AM - 11PM SATURDAY**  
**TICKETS WHICH ENTITLE YOU**  
**TO £2 OF BEER VOUCHERS -**  
**£2 IN ADVANCE**  
**£3 ON THE DOOR**

and the 'head banger' beers will be raised in price to a modest £2 per pint.

This year it is planned to increase the number of real ales and traditional cider & perry to:-

**28 Different Beers**  
**6 Ciders/Perry**

Some of the beers that are planned to be on offer are the award winning Moorhouse's Black Cat Mild, Adnams Extra, Fraoch Heather Ale, Goose Eye Wharfdale, RCH Pitchfork, Daleside Monkey Wrench and the formidable Lees Moonraker.

Advance tickets for the festival will cost £2.00 each and will entitle the bearer to ten beer vouchers worth twenty pence. The same tickets will also be available on the door for £3.00 each.

Tickets can be obtained from pubs in the Aylesbury area where *Swan Supping* is available. They will also be available at the Tourist Information Centre and both Aylesbury and Wendover Hospice shops.

If you have any difficulty, or you wish to sponsor a barrel, please contact the office of The Friends of Nightingale House on 01296 429975.

Ian Brown and his staff welcome you to

### The Queen's Head

*The Village Pub In The Heart of Aylesbury*



**Bar Snacks & Full Meals Menu**  
**available Lunchtimes & Evenings**

New separate function room/restaurant  
 which will specialise in Cajun food

Regular Food Theme Evenings

Private Parties Catered for

**Bed & Breakfast Accomodation**

Company Quiz Nights League Sept - April

**Four Real Ales and the largest selection of**  
**Malt Whiskies in the Area**

Temple Square, Aylesbury, Bucks. HP20 2QA

Tel: 01296 415484



***Brewers of Award Winning Ale***

Calling all beer lovers. Vale Brewery offer Award Winning Traditional Ales, made from only the finest malted barley and whole English hops, in ready to drink polypins and party packs.

To order, telephone 01844 290008 giving a minimum 24 hours notice.

Price List (Inc. VAT)

Bright beer unless otherwise requested

Hadda's Seasonal Ales are available throughout the year.

<u>BEER</u>	<u>ABV</u>	<u>FIRKIN</u>	<u>POLYPIN</u>	<u>POLYBOX</u>
Notley Ale	3.3%	£70.00	£40.00	£20.00
Wychert Ale	3.9%	£72.00	£42.00	£21.00
Edgar's Golden	4.3%	£74.00	£44.00	£22.00



## LOCAL BREWERY FEATURE

Following signs to 'Chiltern Valley Winery & Brewery' from the Henley/Marlow road (A4155), along the picturesque Hambleden Valley, you would be forgiven for believing that you had arrived at a typical rural farm in a perfect setting, for that is exactly what it was until David Ealand bought it in 1980.

Whilst still practising International Maritime Law in the city, he initially planted a vineyard, set up a winery and by the mid-80's Chiltern Valley Winery had become a substantial producer of a wide range of fine English wines. These went on to prove themselves at the top end of the market both here and abroad, assisted by the numerous awards achieved by these products in both national and international competitions.

In 1990, however, David decided, whilst in the process of doubling the


size of the winery buildings, to set up a traditional brewery and brewing began that year. Old Luxters cask conditioned *Barn Ale Special*, a flavoursome golden rich ale of 4.5% ABV was followed by *Barn Ale Bitter*, 4% ABV and *Old Luxters Dark Roast* with an ABV of 5%.

In 1993 *Old Luxters Farm Brewery*, whilst continuing to expand their cask trade, produced their first bottle conditioned *Barn Ale Special* (5.4% ABV) which was soon sold UK wide with exports to Sweden and France, then further afield in Europe and subsequently world wide.

The market response had two immediate effects. *Old Luxters* was inundated with demand from both large and small breweries throughout the country and later from restaurants, clubs, universities and schools, to brew and/or bottle ales under contract.

Recently, *Old Luxters* have acquired a new bottling/labelling line with a capacity of 3000 bottles per hour to cope with the increased business of bottling for others. Many household names in ales now come from *Luxters*.

In addition, bottled '*Barn Ale*' was followed by *Old Luxters 'Vintage Ale'* and '*Dark Roast*', both bottle



**Old Luxters  
Brewery**

Traditional  
Ales  
and Bottle  
Conditioning

Tel 01491 638330

### *The Carpenters Arms, Marlow*



Home Made Sandwiches available  
Pub Games  
Real Fire, Patio

15 Spittal Street, Marlow, Bucks  
Telephone : 01628 473649



*Oxfor's Finest Beers  
Morrells Varsity & Bitter*



### **The Cock Inn** at **Wing**

Telephone 01296 688214

*\*In the 'Good Beer Guide' again.*

*Always six Real Ales 'on' & changing often  
(Plus, if it's not too busy, ask the bar staff what's  
ready for 'blast off' in the cellar - that's another  
three ales at least !!) \**

*\* Ample Car Parking. Disabled Facilities \**  
*\*Great Restaurant (60 covers) serving a la Carte  
Meals & The Best Carvery FOR MILES  
Around. Open 7 Days a Week. \**  
*\*ALTERNATIVELY MORE INFORMAL ~  
VALUE FOR MONEY ~ TRADITIONALLY  
HOME COOKED BAR FOOD \**  
*Sounds Good eh?*

**WHY NOT VISIT A PUB THAT IS CLOSER  
THAN YOU THINK AND WHICH ALWAYS  
OFFERS A 'MINI BEER FESTIVAL'**



## OLD LUXTERS

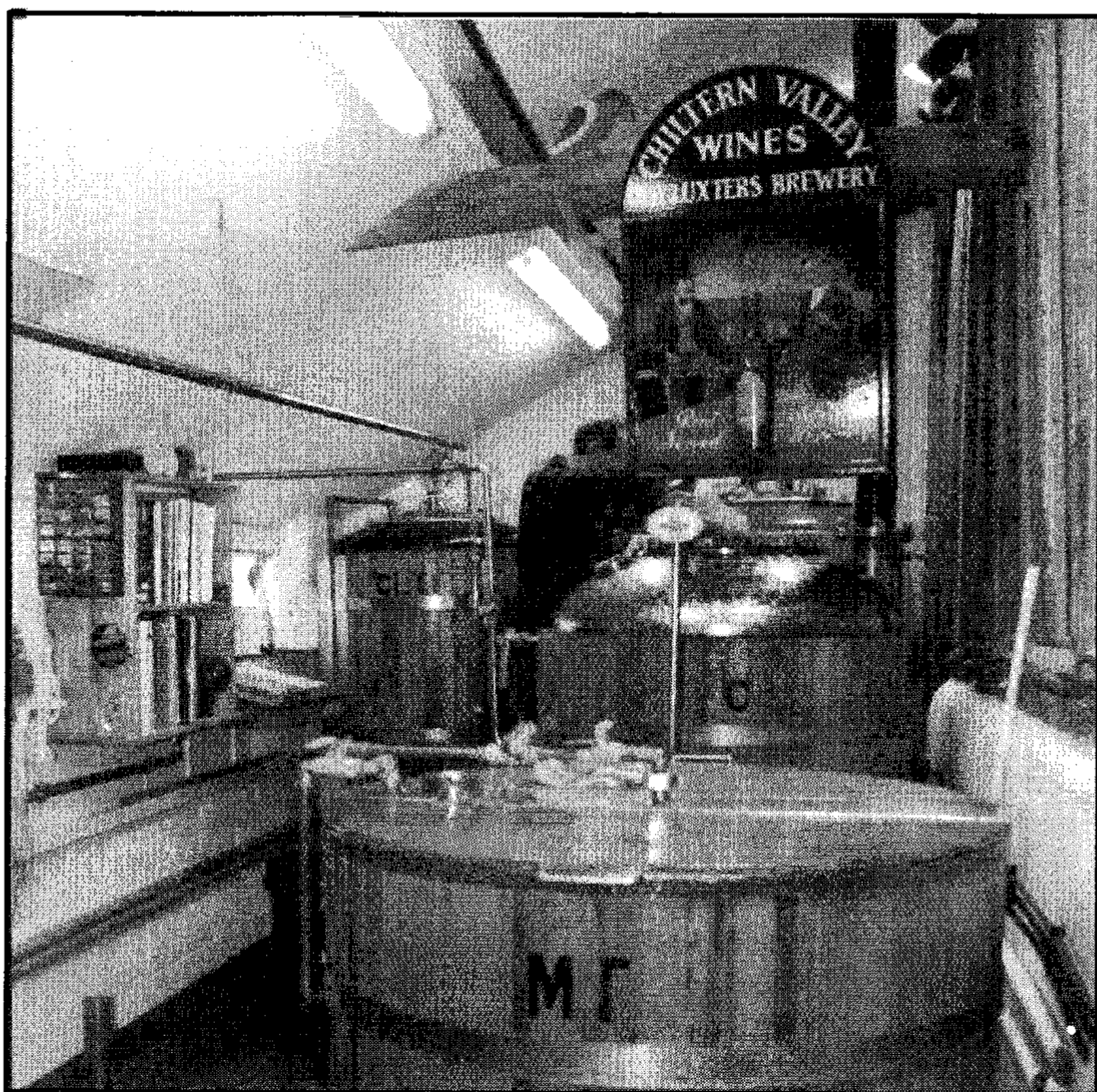
conditioned to 5% ABV.

"We have no secrets here" explained their brewer Frank Bloss, who has recently returned from Finland where he assisted in setting up a brewing operation. "With so much competition, mostly from the large breweries, we have always brewed for the discerning beer-drinking customer who has always wanted the quality of flavour above all else.

"Others can process their beer, spend on marketing and aggressive discounting. We can always continue to craft fine, full mash ales with flavour, so long as there is demand out there." So far it seems to be steadily increasing.

The Old Luxters Winery & Brewery is open every day including weekends and their products are distributed by Dayla of Aylesbury (Tel: 01296 420261).

David Ealand – September 1998.



Pat & Danny Kinnard FBII & FCL  
offer you a warm welcome to

### The Black Boy



Church Lane, Oving, Nr Aylesbury, Bucks HP22 4HN  
Tel: 01296 641258

A LA CARTE RESTAURANT    SUNDAY LUNCHES  
Open 7 days a week        (Booking advisable)

BAR FOOD                      LOVELY GARDEN WITH  
7 days a week                PANORAMIC VIEWS

ALL PARTIES & FUNCTIONS COACHES WELCOME  
CATERED FOR                CAR PARK

**Aylesbury Vale Pub of the Year 1997**  
**Book now for Xmas & New Year!**

### A Warm Welcome To The Clayton Arms

16 Oxford Road  
Marlow  
Bucks. SL7 2NL  
Tel : 01628 - 478620

**Traditional Family Run Pub Offering :-**

**Home Cooked Lunches & Snacks**

**Finest Brakspears' Ales**

**Summertime Patio Area**

**Non-Smoking Dining Area**  
**Suitable For Families**

**AS SEEN IN THE 'GOOD BEER GUIDE'**



## GREAT BRITISH BEER FESTIVAL 1998

### A CIDER DRINKER'S VIEW BY JANE

Ah, the CAMRA Annual Beer Festival at Olympia, my favourite booze occasion of the year! To anyone who has never been, let me tell you what you are missing, and for the thousands of people who do attend (of which I would be prepared to bet, most are beer drinkers), let me give you an alternative view of this highlight of any drinker's calendar.



I am one of those minority cider fiends. We are a growing band, as seen by the ever increasing queues and the greater selection on the cider stand with every passing year. I do not attend many beer festivals, mainly due

to the poor selection of cider, and this is a prime reason why I so enjoy the Olympia festival. This year was no exception.

The first decision to make was whether to go in the week or on the last day (Saturday). The choice of day is always a difficult decision, weighing the lack of choice caused by the most popular beers sometimes running out later in the week, with the lure of additional drinking time (there is no closedown between lunch and evening sessions on the last day). Obviously we plumped for the extended drinking opportunity of Saturday!

We arrived early afternoon, and in the time-honoured tradition I made my speedy way to the cider counter, accompanied by my normally beer-swilling chums, who, like me, make the most of the vast selection of cider on offer on this occasion.

Next decision was whether to go for the cider or perry (made from pears instead of the traditional apples) for that all-important first drink. I decided on the perry and the staff,



being as friendly and helpful as ever, let me **sample** a couple before parting with any dosh. I thus identified a particularly tasty tippie, 'Staplehurst's Double Vision(!)' which exhibited exactly the right balance between sweet and dry. After a couple of large sips, I felt a powerful surge of alcohol hitting my as yet empty tum (having decided to save myself for some of the large variety of food on offer). Oh no! I had not given the name enough

*Bryan welcomes you to*  
**The Huntsman**  
 Walton Court, Aylesbury

FULLERS LONDON PRIDE  
 Plus 'Guest' Beers

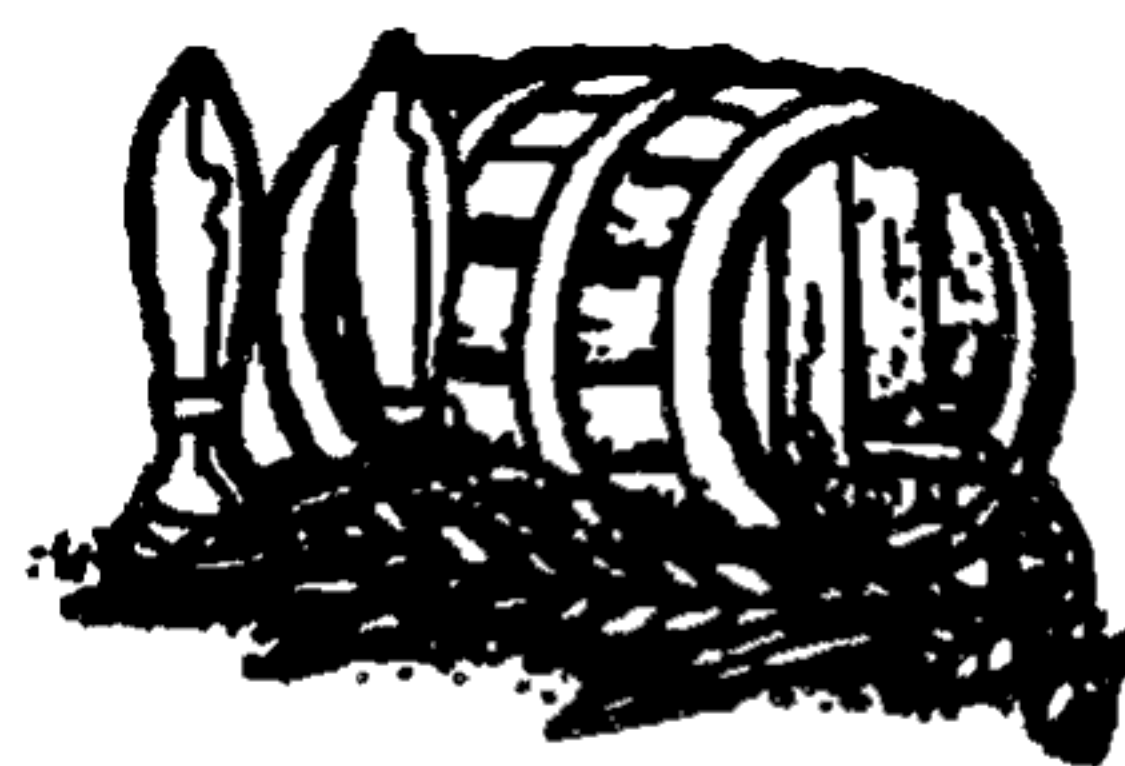


BIG Screen TV

Music Quiz Thursdays



Tel : 01296 429588



**Rose & Crown**  
 Wingrave

(Off A418 Aylesbury to Leighton Buzzard Road)



1998 Good Beer Guide

Recently extended to accept  
 parties up to 50 people

NOW BOOKING FOR CHRISTMAS  
 AND THE NEW YEAR

FOR DETAILS PHONE  
 GEOFF SMITH  
 01296 681257

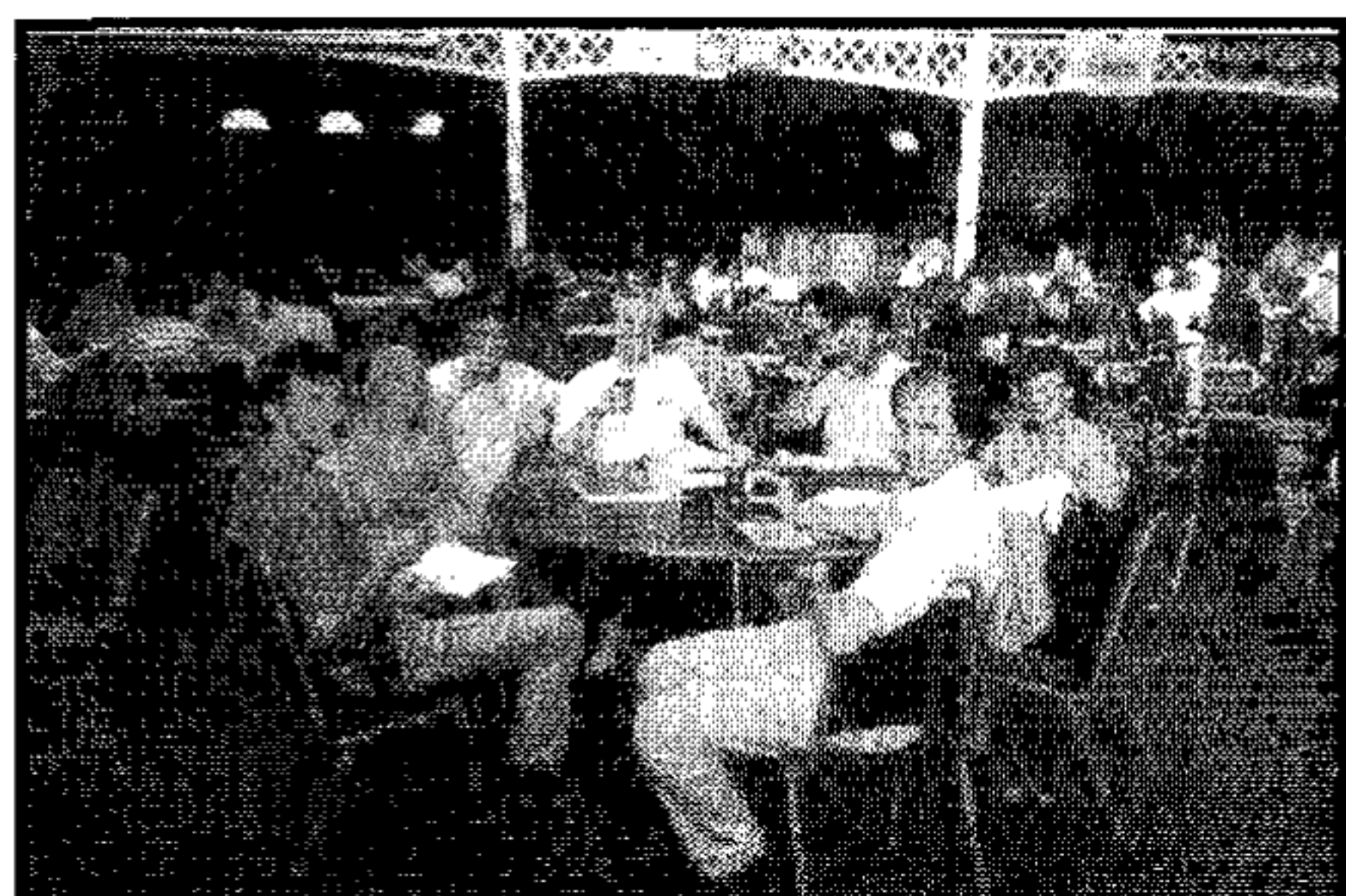




## Swan Supping

consideration - a quick glance at the barrel revealed it was 7%! Bad news for a first choice - it was downhill from here!

The afternoon progressed through a variety of ciders and perrys, including the extremely enjoyable Franklins



perry from the Little Hereford brewery, and the odd beer for good measure, until the mixture of drink, food and humidity finally caused us to admit defeat and retire back to Aylesbury, to our local, the Huntsman.

By the time we got back it was about 7.30pm. We parked ourselves on the warm balcony of said pub, still attired

in our warm weather drinking gear (shorts and T-shirts in the main, a sight to behold on my buddy Sid). More drinkies, though no cider to match the stuff in London (Huntsman management, please note!), was a fitting end to this most enjoyable day.

I have to say, having attended the festival every year for the last 4 years, It just gets better and better, with more selection of beer and cider (this year comprised around 36 ciders and 12 perrys alone, so imagine how many beers there were), imaginative fast food (from Thai through German sausages to good old pizza and hamburgers), live entertainment (though more a backdrop than something to sit and watch), a variety of pub games and a congenial atmosphere.

It you attend regularly, you'll know what I mean, if you've never been do yourself a favour and pay a visit next year! I guarantee you will not be disappointed (just don't drink the best cider before I get there!).

## CHAMPION BEERS OF BRITAIN 1998

### OVERALL CHAMPION

Gold CONISTON BLUEBIRD  
Silver MORDUE RADGIE GADGIE  
Bronze MOORHOUSE's BLACK CAT

### MILDS

Gold Moorehouse's Black Cat  
Silver Elgood's Black Dog Mild  
Bronze Harvey's Sussex XX Mild Ale

### BITTERS

Gold Coniston Bluebird Bitter  
Silver Oakham JHB  
Bronze Itchen Valley Godfathers  
Bronze Dent Aviator

### BEST BITTERS

Gold RCH Pitchfork  
Silver Adnams Extra  
Bronze Taylor Landlord  
Bronze Fuller's London Pride

### STRONG BITTERS

Gold Mordue Radgie Gadgie  
Silver Dent Kamikaze  
Bronze Cheriton Diggers Gold

### SPECIALITY BEERS

Gold Freeminer Shakemantle  
Ginger Ale  
Silver Dark Horse Fallen Angel  
Bronze Daleside Morocco Ale  
BOTTLE-CONDITIONED  
Gold Fullers 1845 Celebration Ale  
Silver Burton Bridge Empire Pale Ale  
Bronze Hampshire Pride of Romsey IPA

Mick and Wendy Rolley

## The White Hart Quainton

(Nice Pub, shame about the Landlord)

ABC Bitter  
Fullers London Pride, Wadworth 6X,  
Guest Beers

Evening meals served until 21:00  
(Not Mon or Thu).

Bar Snacks available until 22:45.

Bed & Breakfast £25.00 p.p.p.n (inc V.A.T)  
En Suite Room/Colour T.V./Tea/Coffee  
English Tourist Board Approved (2 Crowns)

4 The Strand,  
Quainton  
Aylesbury  
Bucks  
HP22 4AS  
Tel : 01296 655234

## Useful Addresses

### CAMRA HQ:

230 Hatfield Road, St Albans, Herts  
AL1 4LW.  
Tel: 01727 867201  
Fax: 01727 867670  
E-mail: [camra@camra.org.uk](mailto:camra@camra.org.uk)  
Internet: <http://www.camra.org.uk>

### PLANNING DEPARTMENT

For comments, complaints or  
objections about pub alterations or  
developments -

Aylesbury:  
AVDC Planing Dept, Exchange St,  
Aylesbury  
HP20 1UB  
Tel: 01296 585406

### TRADING STANDARDS

For complaints about short measure,  
price lists, strength lists (ABV), etc.  
Aylesbury:

County Hall, Walton Street, HP20 1UP  
Tel: 01296 383212

### Oxford:

PO Box 618, County Hall, OX1 1DX  
Tel: 01865 815000 (Mon - Fri 8:30am-  
5pm)

### ADVERTISING STANDARDS AUTHORITY

For complaints about deceptive  
advertising-  
Advertising Standards Authority  
Brook House, 2-16 Torrington Place  
London WC1E 7HN

## Branch Contacts

Chairman	David Roe	01296 484551
Treasurer	Tony Gabriel	01494 527884
Secretary	Bryan Spink	01296 429588
Bierton	Nick Holt	01296 483554
Bierton	Mick White	01296 428266
Beaconsfield	Colin Staines	01494 674427
Bledlow Ridge	Ben Walter	01494 481459
High Wycombe	Elvis Evans	01494 511248
Marlow	John Williamson	01628 486378
Stokenchurch	John Bazin	01494 483039
Wendover	John & Tina Wood	01296 625215



BOOK ENDS

**SUPERMARKET SWEEP  
FOR ARMCHAIR BEER  
DRINKERS**

CAMRA BOOKS have published the first edition of the *Good Bottled Beer Guide*, a new sister publication to the best selling *Good Beer Guide* which focuses on draught real ales. The huge increase in the number of bottled beers now available in supermarkets and off-licences has left drinkers somewhat bewildered. This new guide should be by the side of any armchair drinker - novice or hardened enthusiast.

"Bottle-conditioned beers are real ales in a bottle", explains author Jeff Evans, eight times editor of the *Good Beer Guide*. "They contain yeast and continue to ferment and mature in the bottle just as real ales ferment in the cask at the pub. The great thing about them is that they allow you to drink real ale in the comfort of your own home."

The *Good Bottled Beer Guide* profiles all bottle-conditioned beers

currently available in the UK, and contains features on how bottle-conditioned beers are brewed, the history of bottled beers, how to buy, keep and serve bottle-conditioned beers and how to spot foreign bottled real ales.

"When CAMRA was founded in 1971 there were only five regularly brewed bottle-conditioned beers on sale, now there are well over 150, most of them produced by very popular regional breweries and microbreweries."

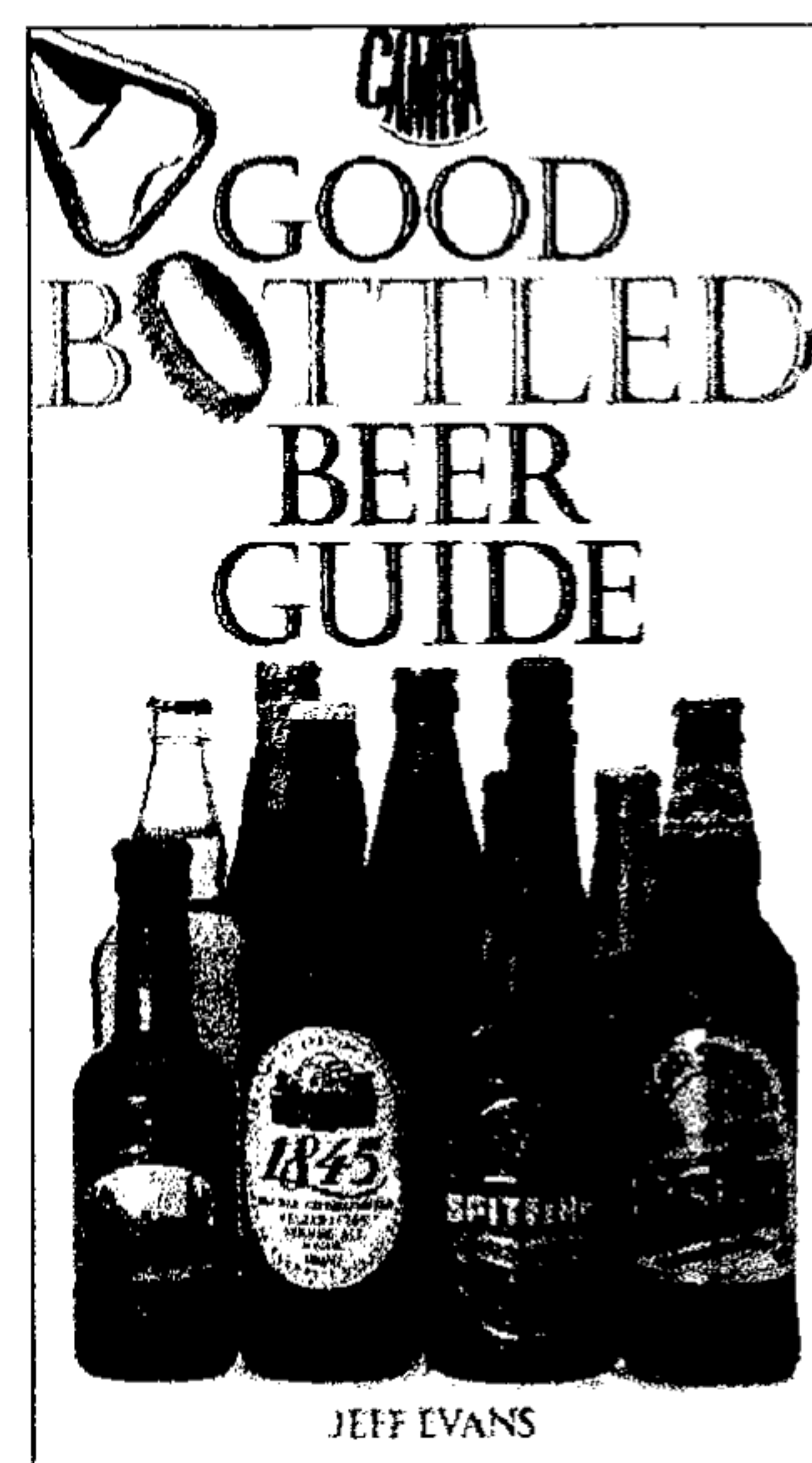
Under recent changes to the Guest Beer Law, tenants of national brewers' pubs can now sell a bottle-conditioned beer of their own choosing, in addition to a draught guest beer and the pub's regular ales. "As the bottles usually carry a long shelf life, there's not much risk of being left with surplus stock or the beer going bad before selling out. It's a win-win opportunity for Britain's publicans."

"Just think how a pub selling bland national brews would be enlivened

by stocking champion beers like *Fuller's 1845*, *Hop Back Summer Lightning*, *Marston's Oyster Stout*, or a world-classic beer like *Thomas Hardy's Ale* or *Gale's Prize Old Ale*."

*The Good Bottled Beer Guide* by Jeff Evans (hardback)

Price £9.99. Copies available from bookshops or direct from CAMRA.



*Letters*

Send your letters to the editorial address.

What time should "last orders" be called, and what exactly does it mean?

I have always assumed that 10:50pm was normal for last orders to be called and this gives the customers due warning that the pub will cease serving in 10 minutes.

Imagine my surprise, then, to have been refused service at nine minutes to eleven at a pub near Aylesbury recently.

Admittedly we had only arrived at 10:51pm but I was astonished when the landlord told me that he had already called "last orders" and wouldn't serve me or my two friends.

He said "Nobody should

turn up so late and expect to be served. If you come at a more reasonable time you'll be treated with more respect."

If the pub had been empty I would have thought "fair enough" but there were half a dozen customers grouped around the bar (one of whom greeted me) and they didn't look like they were about to leave.

Should we have been served? I wonder if readers have any views on this.

*Nick Holt, Bierton*

*Please send your comments on this or any other matters relating to beer drinking in our area to the Editor. The address is on Page 12.*



**Wycombe  
Wines**



**Specialists in Real  
Ale to take home.**



**20 Crendon Street  
High Wycombe  
Bucks**

**Telephone : 01494 437228**



### BIGGEST EVER GUIDE

The 26th *Good Beer Guide* is published on 13th October. This will be the biggest ever edition of the ever popular beer-drinkers bible. There are over 5,000 pub entries and hundreds of breweries detailed in its 576 pages.

The 1999 guide has been given a complete new look by new editor Jonathan Preece. It is now easier to use and easier to read.

The guide is compiled by local members of the **Campaign for Real Ale**. These are the people who know the local pubs and they are not paid for the task. Each pub is checked for quality throughout the year. In the Aylesbury Vale and Wycombe branch, members score beers on a scale of 1 to 6 and a table of average scores over the year is compiled. This is used to help determine which pubs are to be included. If the quality of the beer declines then the pub is not included in the guide.

The guide is the flagship publication of the campaign and is sponsored by *Homefire Smokelass Coal*. It includes a symbol for pubs with real fires.



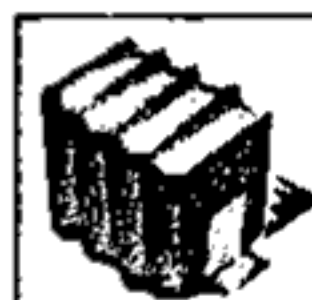
There are a number of feature articles including a look at Cambridge Beer Festival. If you want to know why it's held, how it's organised and what people get up to at a beer festival then this is the place to find out.

There's a complete listing of CAMRA's definitive index of unspoilt heritage pubs, the National Inventory of Outstanding Pub Interiors. Also included are articles on beer styles, a list of nearly fifty new breweries and the *Good Beer Guide* Beers of the Year.

The guide will be launched at Young's brewery by the editor and TV celebrity Jilly Goolden.

*Good Beer Guide 1999, published by CAMRA BOOKS.*

*Price £10.99. £7.50 to CAMRA members from HQ or £7 at local branch meetings in October and November.*



**B  
O  
O  
K  
  
E  
N  
D  
S**



### THE LAUNCH OF A NEW BEER!

Colin Dexter, famous for the 'Inspector Morse' novels, toasts the arrival of Mix 96 Monster Ale at the Chiltern Brewery, Terrick.

He is seen here with Richard Jenkinson, the brewer and two representatives from Aylesbury's own radio station MIX 96

# CAMRA

## BEARDS AND WOOLLY JUMPERS OPTIONAL...

Contrary to popular belief over a quarter of our members are female. So whatever your gender, join us in our battle for decent real ale and pubs.

## JOIN NOW

TELEPHONE: 0845 6030208  
Calls charged at local rate  
Or write to CAMRA, 230 Hatfield Road, St Albans, Herts AL1 4LW

**CAMPAIGN  
FOR  
REAL ALE**



# LONDON PUB CRAWL - 16th OCTOBER

Following the success of our last pub crawl in the Marylebone area, we decided to have another in London. In order to prepare for this, someone had to go and survey the pubs in advance - it's a tough job, but someone has to do it!!

For a change, we decided to start near Euston, work our way down the Grays Inn Road and end up in Bloomsbury.

Using public transport is imperative, so take the train and the underground to either Euston or Euston Square and go to the east of the bus station. It will be a good idea to have an A-Z if you decide to join the crawl late!

**1. Head of Steam, 1 Eversholt St.(5.30pm)**

*Large selection of guest beers. An upstairs bar with much railway memorabilia. Always worth missing a few trains for, so we've allowed an hour here.*

*Turn left out of the pub and head down Euston Road towards Kings Cross.*

**2. Euston Flyer, Euston Rd. (6.30pm)**

*Fullers Chiswick, London Pride, ESB plus two guest beers. Large new Fullers pub, opposite the new British Library, which opened late 1997.*

*Turn right, then right into Judd Street and 100 yards on left.*

**3. Skinners Arms, 114 Judd St. (7pm)**

*Greene King IPA, Abbot. Large traditional pub, not open on Saturday or Sunday.*

*Turn left, then left into Cromer Street, then walk to the end where it joins Grays Inn Road. Thirsty people can make an optional detour into the **Lucas Arms** (Courage Best, Greene King IPA, Abbot). Turn right, then walk half a mile (or take a bus) to our next stop which is on the left.*

**4. Calthorpe Arms, 252 Grays Inn Rd. (7.45pm)**

*Young's Bitter, Special, Oregon. Large, friendly corner pub, with a large function room often used for CAMRA meetings.*

*Turn left out of the pub, then after 100 yards turn right into Northington Street.*

**5. Kings Arms, 11A Northington St. (8.30pm)**

*Everards Tiger, Greene King IPA, Marstons Pedigree, Wadworth 6X. Traditional corner pub with one bar and two upstairs rooms.*

*Left out of pub then to the end of the street.*

**6. Rugby Tavern, 19 Gt. James St. (9pm)**

*Shepherd Neame Master Brew, Spitfire, Late Red. Recent conversion to Shepherd Neame - it is in the GBG as a Fullers pub.*

*Go round the corner into Rugby Street, then turn right into Lamb's Conduit Street. As you walk the few yards to the last pub, spare a few seconds to bemoan the loss of the **Sun** which used to have a large selection of real ale and is now an 'Irish' pub called **Finnegans Wake**.*

**7. Lamb, 94 Lamb's Conduit St. (9.30pm)**

*Young's Bitter, Special, Seasonal beer. An absolute gem which must not be missed. This popular famous pub retains a lot of original features including snob screens and a working Polyphon.*

*There are various restaurants in the area for those requiring food and it is only a short stagger to **Russell Square** Tube station and you can take the Picadilly Line to Picadilly Circus then change to the Bakerloo line to get the train home from Marylebone.*



## The Bell, Berton

Traditional village pub

191 Aylesbury Rd, Berton, Aylesbury, Bucks

Tel: 01296 436055

*Meals served 7 days a week:*

*Lunchtimes: 12.00 - 2.30pm*

*Evenings: 6.00 - 9.30pm*

### CHRISTMAS MENU £9.50

Prawn Cocktail or

Paté or

Home Made Soup, Roll & Butter

~~~~~

Roast Turkey with Seasoning and Chipolatas

or

Roast Beef with Yorkshire Pudding

Both served with Parsnips, Sprouts, Carrots,

Baked Onion and Roast Potatoes

~~~~~

Ice Cream Sundae or

Mince Pies or

Christmas Pudding

~~~~~

Coffee & Mints

*Live JAZZ last Sunday of every month*

*(no food available on jazz evenings)*

*Listed in the 1998 Good Beer Guide*

*Fuller's Ales*



## NATIONAL NEWS

### BLUEBIRD SOARS TO VICTORY

Coniston Bluebird Bitter was judged to be the best beer in Britain by a panel of brewers, beer writers and journalists at this year's Great British Beer Festival in August. Bluebird, named after the land-speed record car, is a beer with a pronounced, complex, fruitiness backed by a lingering soft sweetness and a hoppy bitterness.

The Cumbrian brewed beer was chosen as the overall winner from over fifty finalists in eight categories including beers from tiny micros to major national brewers.

CAMRA Press and Public Affairs Manager Ben Wardle said "This is tremendous news for Coniston and proves how beers from small brewers can compete on the national stage. It's a wonderfully distinctive beer with all the qualities a national champion should have."

A spokesperson for Coniston said, "We've been brewing for just over three years, and it's fantastic to have won this top drinkers' award so quickly."

The silver award went to **Radgie Gadgie** from last year's winners Mordue Brewery in Tyne & Wear.

The bronze went to the winner of the Best Mild Category - **Black Cat Mild** from the Burnley based brewery Moorhouse's.

Ben Wardle added, "The top three beers are all from fairly small breweries."

**1845 Celebration Ale** from Fullers Brewery in London was judged to be The Guardian/CAMRA Champion bottle-conditioned beer of Britain by a panel of Guardian readers and experts from CAMRA.

Eight of the best bottle-conditioned beers (real ale in a bottle) competed for this prestigious award. **1845 Celebration Ale** is a 6.3% ale specially produced to mark Fullers' 150th anniversary in 1995.

Roger Protz, Guardian beer writer, said "It has a rich almost winey character with biscuity malt and deep hop bitterness and is a worthy winner."

RESULTS ARE GIVEN IN FULL  
ON PAGE 7



### TIME FOR ACTION

British people believe that pubs are an important centre of the community and are essential to rural communities.

The findings of a major research project into public perceptions of the British pub were released by CAMRA.

The research shows that:

- 71% of people believe that the pub is one of the centres of the community.
- 81% of people believe that the rural pub is essential to a rural community
- 80% of people visit a pub at sometime
- 41% visit a pub twice a month or more
- Real Ale drinkers visit pubs the most - 61% visit a pub twice a week or more
- 70% of non-pub users agree that pubs are essential to rural communities
- People in the North use pubs more and social class ABs are the heaviest pub users

Mike Benner, Head of Campaigns said, "Village shops are eligible for mandatory rate relief and are being considered for charitable status."

Our research shows that the British public think pubs should be given equal priority."

## LOCAL BREWERY NEWS



Vale Brewery seasonal beer for the autumn is *Hadda's Autumn Ale*.

This copper coloured premium ale is made from the finest Marris Otter malted barley and a blend of British and American hops. Traditional malt flavours give way to a distinctive hop finish.

Pubs in our area which are due to have the beer are:-

**Hogshead**, High Wycombe  
**Abingdon Arms**, Thame  
**Swan**, Thame



## MORRELLS

Entrepreneur Michael Cannon, the man behind the Devenish and Magic Pub chains, may have outbid the other contenders for Morrells.

A long list of people are interested in buying the brewery site, but not for brewing. One of the colleges (Nuffield) appeared to be favourite.

Morlands are rumoured to have pulled out of a deal to acquire the pubs and other whispers had both Shepherd Neame and Greene King in the running, with the latter leading the way.

### JOIN CAMRA TODAY

Just fill in the form below and send your remittance (made payable to CAMRA) to Membership Secretary, CAMRA, 230 Hatfield Road, St Albans, Herts, AL1 4LW

Rates are Single £14, Joint £17 (at same address),  
Student/OAP/Unemployed/Disabled £8  
Joint OAP £11 (at same address)  
Under 26 £8 date of birth \_\_\_\_\_  
For Life/Overseas rates, please ask for details.

Name(s).....

Address .....

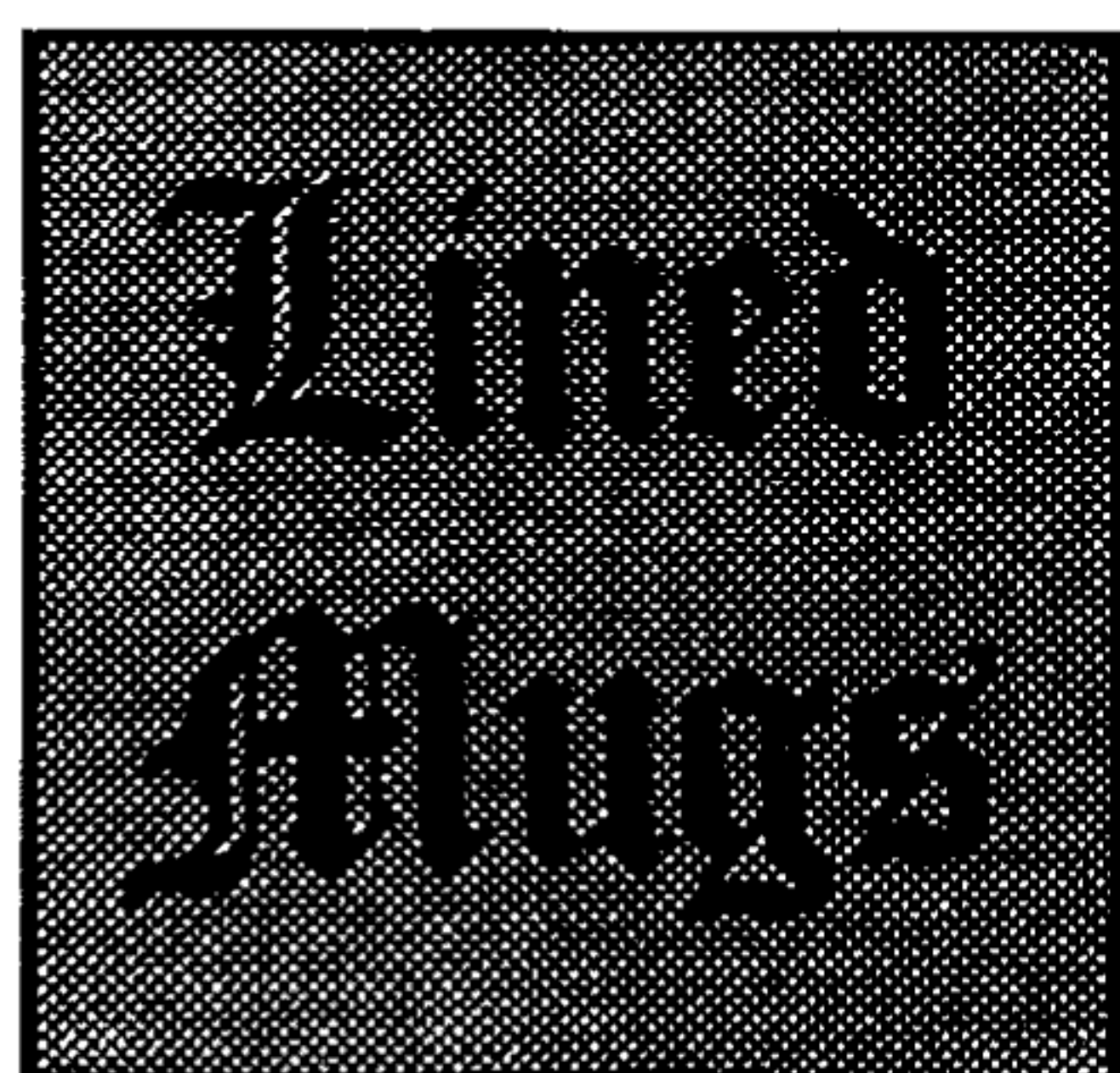
..... Postcode .....

I/We wish to join the Campaign for Real Ale, and agree to abide by the Rules.

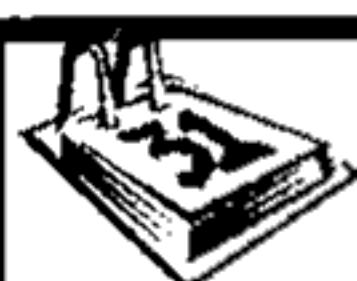
I enclose a cheque for £.....  
Signature



..... Date .....  
AYL (SWAN SUPPING)







## Branch Diary

*Everybody welcome to all socials and meetings!*

### October

**Thursday 8th Good Beer Guide 1999 Pre-Launch Social**

Cock, Wing (Beer Festival) - 8:00pm

This is a joint social with the South Bedfordshire branch of CAMRA to celebrate the publication of the 1999 Good Beer Guide - see Page 6.

**Saturday 10th Regional CAMRA Meeting**

2:00pm Bridge, Fenny Stratford (CAMRA members only)

**Friday 16th London Pub Crawl**

Starts at the Head of Steam, outside Euston Station at 5:30pm.

Full details are given on Page 10.

**Monday 19th Stoke Mandeville Stumble**

9:00pm Woolpack, 10:00pm Bull

**Friday 23rd - Saturday 24th Beer Festival**

Ranch House, Aylesbury - See full details on the festival on Page 3.

**Thursday 29th Wycombe Marsh Social**

9:00pm General Havelock

### November

**Tuesday 3rd Branch Meeting**

8:30pm Old Ship, Cadmore End

**Tuesday 10th West Wycombe Walkabout**

9:00pm Swan, 9:30 Plough, 10:00pm George & Dragon

**Tuesday 17th Wendover Wobble**

9:00pm Shoulder of Mutton, 9:30pm Red Lion, 10:00pm Swan

**Wednesday 25th Princes Risborough Perambulation**

9:00pm George & Dragon, 10:00pm Bell

**Monday 30th Branch Meeting**

8:30pm Shepherds Crook, Crowell

### December

**Wednesday 9th Joint Social with Mid Chilterns Branch**

9:00pm Cross Keys, Great Missenden



## Beer Festival Diary

### October

**1st - 3rd Guernsey Real Ale & Cider Festival**, North Legion Hall, L'Islet

**1st - 4th Scunthorpe**, The Baths Hall, Doncaster Road

**7th - 10th Bedford**, The Corn Exchange

**8th - 10th Croydon & Sutton Beer Festival**, Stafford Road, Wallington

**8th - 11th Cock, Wing**

**8th - 11th Wakefield Beer Festival**, Townhall, Wood Street

**9th - 10th Carmarthenshire Beer Festival**, Notts Square

**15th - 18th Nottingham Beer & Cider**, Victoria Leisure Centre, Sneinton

**15th - 18th Durham CAMRA Beer Festival**

**16th - 17th Bath**, The Pavilion, North Parade Road

**20th - 24th Westmorland Beer Festival**, Brewery Arts Centre, Kendal

**22nd - 24th South Devon Beer Festival**, Newton Abbot Racecourse

**23rd - 24th 5th Vale of Aylesbury Beer Festival**

Held at The Ranch House, Aylesbury. This is a charity beer festival, organised by the Friends of Florence Nightingale House with assistance from the Aylesbury Vale and Wycombe Branch of the Campaign for Real Ale. See page 3 for full details.

**29th - 31st Nuneaton Beer Festival**, Meadow Street

**29th - 31st Swindon Beerex**, New College, Frobisher Drive, Walcot

**29th - 31st Cardiff Beer & Cider Festival**, Star Centre, Splott Road

**30th - 31st North Hampshire**, St Lukes Hall, Overton, Nr Basingstoke

**30th - 31st Worthing**, Richmond Rooms, Stoke Abbot Road

### November

**6th - 7th Woking Beer Festival**, Woking Leisure Centre, Woking Park

**12th - 14th Beer on Broadway**, Town Hall, New Broadway, Ealing

**12th - 14th Wombwell Warmer**, Church Hall, Park St., Wombwell

**17th - 21st Rochford Beer Festival**, Freight House, Rochford

**19th - 21st City of York Beer Festival**, Exhibition Square, York

**26th - 28th Luton Beer Festival**, Drill Hall, Old Bedford Road

## WHY NOT ADVERTISE IN SWAN SUPPING?

You can reach a targeted audience  
of pub goers for as little as £4.50  
per issue

**Circulation now 2200**

### Swan Supping

Swan Supping is distributed free of charge to pubs in the branch area. Published by the Aylesbury Vale & Wycombe branch of the Campaign for Real Ale and printed by Northridge Printing Services Limited, Unit 13-14, Bessemer Crescent, Rabans Lane, Aylesbury, Bucks HP19 3TF.

Circulation 2200 copies.

Edited by Bryan Spink & David Roe.

Editorial Address : 15 Bedwyn Walk, Aylesbury, Bucks HP21 8EQ.

Tel/Fax : David 01296 484551, Bryan 01296 429588

Tel : Bryan 0410 147528 (mobile)

E-Mail : bryan\_spink@bucks.net

Advertising rates are :- 1/16 page £5, 1/8 page £15, 1/4 page £25, 1/2 page £50. Add 10% for front page adverts. 10% discounts for payment in advance.

Copy deadline for next issue, due to be published on 1st Dec is 14th Nov.

Subscriptions :- To receive editions of Swan Supping by post, please send SAEs to the Editor.

©Aylesbury Vale & Wycombe CAMRA 1998. Opinions expressed in Swan Supping are not necessarily those of the editor, or the Campaign for Real Ale. Acceptance of an advertisement in Swan Supping by a pub does not guarantee CAMRA approval of the outlet.



EST.  1851

*The House of*  
**Dayla**

**JOIN THE  
GREAT DAYLA  
ALE TRAIL**



Over 400 Ales  
Available Throughout  
The Thames Valley

*A Family Firm  
since 1851*

**Tel: 01296 420261  
Fax: 01296 397012**

High Street,  
Aylesbury, Bucks  
HP20 1QZ

