

Issue 7

Swan Supping



Campaign for Real Ale

Aylesbury Vale & Wycombe Branch

AUG/SEP 1998

MORRELLS DILEMMA



LONGER HOURS ON THE WAY!

A campaign is planned by CAMRA, the Campaign for Real Ale, to try and save Morrells historic brewery in the centre of Oxford.

On 9th July the company's Chief Executive, Ken Hodgson, announced the intended sale of the brewery and tied pub estate.

The local CAMRA branch is running a publicity campaign to persuade local councillors to refuse a request for the change of use of the brewery site in St Thomas' Street.

The branch has already had local press and TV coverage. They also aim to work with other local branches and with the leader of the Morrells tenants in a campaign to gain a statutory listing for as many of the company's 130 pubs as possible.

Nationally, the Campaign is targeting trustees and shareholders. The chairman, Dave Goodwin, is sending a letter to all trustees to try and persuade them to postpone the decision to sell assets for at least five years. In the letter he argues that Morrells can be made more prosperous and compares the company to other successful county brewers such as Brakspears.

Many of the Morrells tenants have no protection under the Landlord and Tenant Act and are therefore angry at the company despite reassurances. Speculators would be guaranteed almost immediate vacant possession on a large number of the sought after premises.

Fears for the brewery grew earlier following the sudden departure of chief executive Charles Eld, a member of the Morrells family. His

replacement, Mr Hodgson, has a number of directorships but only limited experience of the brewing industry. Coopers and Lybrand were called in to advise on future strategy. Mr Hodgson was reported in CAMRA's newspaper *What's Brewing* as saying 'Nobody but a bloody fool would make any commitment to stay in brewing.'

At a July 9th press conference Mr Hodgson said that he would 'prefer to sell the business as one package' adding that the brewery site may be attractive to property developers. He added that their policy is to sell the pubs as a block.

THE MORRELLS BREWERY STORY PAGE 5

The organiser of the local campaign, Neil Hoggarth, can be contacted on 01865 794438

A government working party has called for a radical shake-up of Britain's pub licensing laws, bringing them into line with the rest of Europe.

The proposals have the support of drink-drive campaigners, alcohol support groups, motoring organisations and health bodies

Within the next two years all pubs, clubs and bars in England and Wales could be open until midnight unless there are local objections. Some city centre pubs could open 24 hours a day.

These proposals have received a lot of publicity in London as it is felt that it will be popular with tourists and theatre goers who have to rush to the pub after the show. Perhaps less miserable after *Les Misérables*?



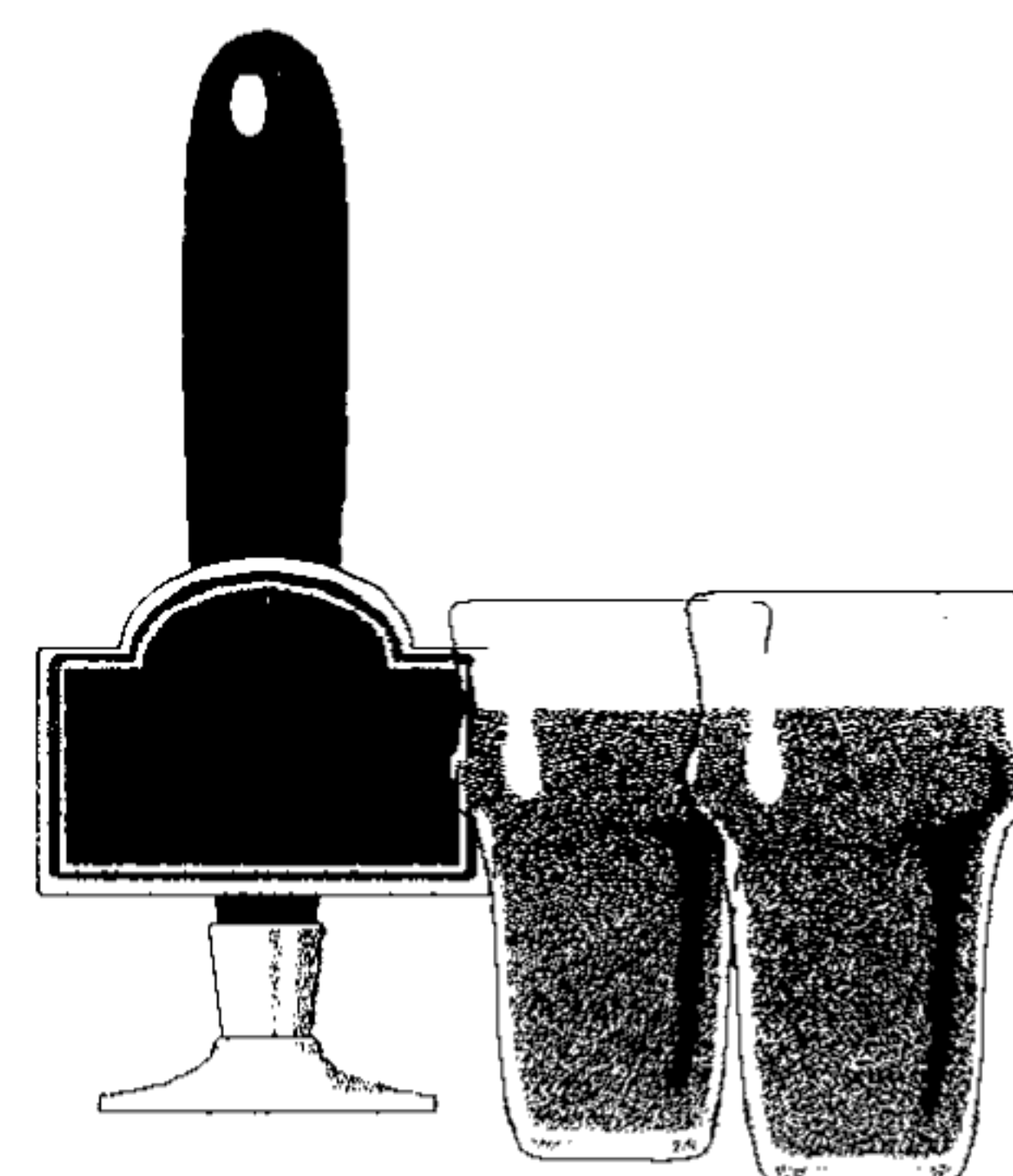
The Finest Ales From



NOW IN:

BRAKSPEAR BITTER 3.4% ABV
BRAKSPEAR SPECIAL 4.3% ABV
REGATTA GOLD 3.8% ABV
FROM ONLY £1.20 PER PINT

COMING IN
AUGUST
MIX 96
MONSTER
ALE
ABV 4.0%



THE END OF THE WORLD BAR & RESTAURANT

LARGE A LA CARTE
RESTAURANT

SUNDAY LUNCH
MENU

BAR FOOD

PARTIES CATERED FOR

BEER GARDEN

FINE WINES

PATIO AREA

OPEN 7 DAYS A WEEK

FOR RESERVATIONS AND INFORMATION
ON WEEKLY EVENTS PLEASE CALL

01296 622299



Local News

AYLESBURY

The new manager at **The Huntsman** is *Swan Supping's* editor, Bryan Spink. The pub is owned by Avebury Taverns and is currently being operated by Northampton based Greyfriars Taverns. *Fuller's London Pride* is the regular ale on offer with 'guest' beers from the Whitbread portfolio including *Wadworth 6X*, *Brakspears Bitter*, *Castle Eden* and *Flowers IPA* and *Original*. It is hoped that beers supplied by Bass will also be available in the near future.

Josh has left **The Aristocrat** to be replaced by his former trainees, Tim and Tina.

Maggie has moved from **The Dark Lantern** to **The Buckingham Arms** which has a new tenant.

AKELEY

The Bull and Butcher has been sold after being operated for 20 years by Mr and Mrs Harry Dyson. Joanne and Peter Barnes are the new landlords.

IVINGHOE ASTON

The new managers at **The Village Swan** are Alastair and Helen MacLeod. They were chosen by the 30 village shareholders of the pub which was bought last year to prevent its closure.

WENDOVER

There's new management at **The King and Queen** in South Street. *Wadworth 6X* is available.

The Firecrest opened on 6th June following extensive renovation selling *Worthington Best* and *Bass*. There is a no smoking area. The renovation included widening the road to provide access. Traditional materials were used in the renovation. The new landlady is Pamela Knowles who has run a number of historic pubs including one of the few to survive the Great Fire of London. The new name for the pub was chosen following a competition. A Firecrest is a rare bird found in Wendover Woods.

There are now no hand pumps left at **The George**.

Real cider has been discontinued at **The Marquis of Granby** due to 'supply difficulties'.

LONG CRENDON

The planned alterations to the **Churchill Arms** have now been completed and they are now offering four handpumped beers (swan necks, but no sparklers). These include a house '*Churchill Bitter*' which varies to give the customers a chance to try different beers at a price of £1.20 per pint. The pub incorporates 'Rumpelstiltskins Sausage Kingdom' and offers sausages made 'without use of mechanically recovered meat, colourings, preservatives or other artificial additions'.

THAME

The famous **Spread Eagle** is now on the market for £2.5 million.

This 16th-century hotel has been in the ownership of the Barrington family for nearly fifty years. David Barrington, who took over from his parents in 1969, is now giving up to enjoy his retirement.

HIGH WYCOMBE

There has been a change of landlord at the **Hogshead** as John Bruce left on July 21st.

The **Gordon Arms** still has its bar billiards table and is offering *Wells Bombardier* and *Ruddles Bitter*.

The **Skinnars Arms**, formerly the **Morning Star**, still offers no real ale and is tending to restrict admission.



LANE END

The **Jolly Blacksmith** has been closed since October 1997, and the **Chairmakers Arms** since May of this year. Please write to the editor if you have any news about their future.

BEACONSFIELD

Bert Fromant returned to the **Prince of Wales** as landlord in May following three years in Australia and has restored traditional beer to the pub with the introduction of *Boddingtons Bitter*.

VILLAGE PUB COMPETITION

The judging panel for the 1998 Aylesbury Vale District Council Village Pub Competition met on 21st July to choose the shortlist of pubs to go forward to the next stage of the competition.

Twenty three pubs in the Vale were nominated. The judges used the nomination forms submitted to decide which fifteen pubs will now be visited by the panel. Following the incognito visits, the judges will pick the top village pub in the Vale. The winner will be presented with a trophy.

The judging panel consists of members of the council and representatives from Mix 96, The Bucks Herald, the British Institute of Innkeeping, CAMRA and last year's winners Pat and Danny Kinnard



Brewers of Award Winning Ale

Calling all beer lovers. Vale Brewery offer Award Winning Traditional Ales, made from only the finest malted barley and whole English hops, in ready to drink polypins and party packs.

To order, telephone 01844 290008 giving a minimum 24 hours notice.

Price List (Inc. VAT)

Bright beer unless otherwise requested

<u>BEER</u>	<u>ABV</u>	<u>FIRKIN</u>	<u>POLYPIN</u>	<u>POLYBOX</u>
Notley Ale	3.3%	£70.00	£40.00	£20.00
Wychert Ale	3.9%	£72.00	£42.00	£21.00
Edgar's Golden	4.3%	£74.00	£44.00	£22.00

Hadda's Seasonal Ales are available throughout the year.



120 - 123 Oxford Road
High Wycombe
Tel - 01494 528335

Come and sample our wide variety of cask ales in our magnificent surroundings



Bring this advert and you can have a sausage meal before 8 pm. for £1.50 when you buy a pint of Real Ale

COMMUNITY PUB IN PERIL

The **Beaconsfield Arms** on the Hughenden Road, High Wycombe is under the threat of being changed from a community pub serving its local area into a Mr Q's with three pool tables and loads of TV screens.

The manager, Mr John Ferris and his wife Vicki have been landlord and landlady in the pub for thirteen years. If the planned changes go ahead, they are faced with the prospect of having to leave.

The two handpumped real ales they serve there are **Benskins Bitter** and the endangered **Burton Ale**.

The pub is situated away from the town centre, fairly close to the recent supermarket development. Parts of the pub date back to 1650, even though the only preservation order is on the distinctive front of the building.

The surrounding area is mainly residential and there are no other pubs close by. Therefore it should appeal to as wide a range of people as possible, and not restrict its custom to one section of the community as these plans would do.

Currently it has a bar billiards table, which is all too rare these days, and this

has three active bar billiards teams, but the table will be one of the first things to be removed.

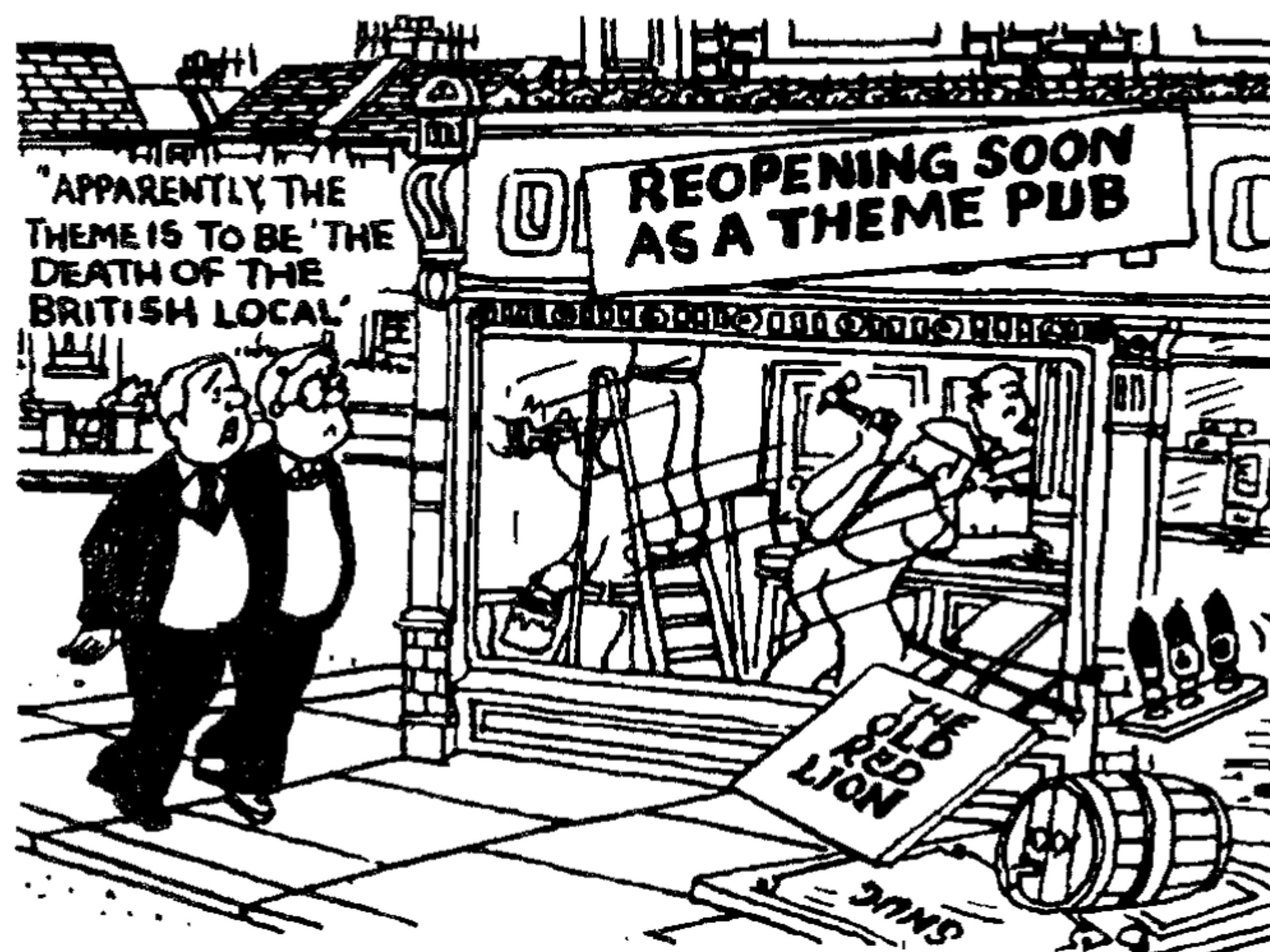
Allied Domecq who own the pub, plan to extend it by building on the private garden which is now used by the landlord to grow vegetables which are then served in pub. This extension will reduce the light available for the

property next door and is due to go for planning approval in August.

Major internal changes are also planned including converting the place from the familiar arrangement of lounge and public bars, with their differing atmospheres and clientele, to the all too common one bar arrangement which tends to only cater to one section of the potential range of customers.

If you know and care about the Beaconsfield Arms, take a few minutes to show your concern by writing a letter before 10th August to:-

*Christopher A. Swanwick
Planning, Transport and
Development Dept.,
Wycombe District Council,
Queen Victoria Street,
High Wycombe,
Bucks. HP11 1BB*



COMMUNITY CENTRE WINGRAVE

(Off A418 Aylesbury to
Leighton Buzzard Road)

**Selection of 25 Different
Beers & Ciders**

Only £1.60 pint

**FRIDAY 4th - SUNDAY 6th
SEPTEMBER**

**Admission £1
(CAMRA Members 50p)**

Entertainment.

Food and soft drinks also available.

FURTHER INFORMATION
GEOFF SMITH 01296 681257

Tom & Carol

Welcome You To

THE CROWN INN



*Treat yourself to a wonderful meal at a
400 year old local village pub.*

*We serve tasty food in our beamed
pub in the picturesque village of
Sydenham only 4 miles from Thame.*

Sample our:

- Full a la carte menu ● Vegetarian menu
- Daily blackboard specials
- All good wholesome home cooked meals
- Sunday roasts from £6.95

Lunch 12 noon - 2 pm every day
Dinner 6:30pm - 9:15pm Tuesday - Saturday
Free Parking

1998 CAMRA Good Beer Guide
1998 Good Pub Guide

We look forward to welcoming you

The Crown Inn, Sydenham (01844 351 634)

LOCAL BREWERY NEWS

The *Vale Brewery* in Haddenham has announced that it will be producing both a mild and a porter this winter.

The dark mild will be called **Black Swan** and should have an Alcohol by Volume (ABV) of 3.4% whilst the porter will have an ABV of about 4.3% and will be called **Black Beauty**.

It is intended that they will be available in the pubs before Christmas.

Vale have also recently brewed a special **Ginseng Ale** (ABV 3.3%) especially for Taipan Taverns which is a pub group with its pubs mainly in the London area. The only local outlet where it could be still available is the **Marquis of Granby**, World's End.



The bottled version of *Vale's* **Edgars Golden Ale**, **Halcyon Daze**, is available in seven branches of Tesco within thirty miles of the brewery.

So far, sales are running at twice the expected level.

The two stores in our branch area are the ones at Tring Road, Aylesbury and High Wycombe town centre.

Vale's summer seasonal beer, **Summer Glory** will be on the New Breweries bar by the stage at the **Great British Beer Festival**.

LOCAL NEWS

The historic **Kings Head**, Aylesbury, has had to be saved from possible bankruptcy by intervention by the National Trust.

Reopened last December as the Kings Head Centre, it hit problems with its emergency lighting and alarm systems. This meant that their function rooms and conference facilities were severely restricted for three months.

The restaurant in the Great Hall and the open air cafe in the courtyard have both been successful. They are serving bottled beers which include selections from our local breweies.

Older Aylesbury drinkers, however, still miss the old bar with its draught beer, old settle and roaring fire. Nostalgia rules OK!

REGIONAL NEWS

The Aylesbury Vale & Wycombe Branch of CAMRA has a new Regional Director.

Subject to ratification from H.Q. in St. Albans, **Martin Bramble** of the Reading branch will take over from our branch committee member **Nick Holt** who served in the post for three years.

BEER FESTIVALS

It's that time of year when it seems that there are beer festivals everywhere - see the list on the back page!

The local ones in September are the Wingrave Beer Festival held at their Community Centre (5th-7th), and the Rising Sun, Haddenham on 11th-12th.

The Carpenters Arms, Marlow



Home Made Sandwiches available
Pub Games
Real Fire, Patio

15 Spittal Street, Marlow, Bucks
Telephone : 01628 473649



MORRELLS

*Oxfords Finest Beers
Morrells Varsity & Bitter*

The Cock Inn

at
Wing

Telephone 01296 688214

**In the 'Good Beer Guide' again.*

*Always six Real Ales 'on' & changing often
(Plus, if it's not too busy, ask the bar staff what's
ready for 'blast off' in the cellar - that's another
three ales at least !!) **

** Ample Car Parking. Disabled Facilities **
**Great Restaurant (60 covers) serving a la Carte
Meals & The Best Carvery FOR MILES
Around. Open 7 Days a Week. **
**ALTERNATIVELY MORE INFORMAL ~
VALUE FOR MONEY ~ TRADITIONALLY
HOME COOKED BAR FOOD **
Sounds Good eh?

*WHY NOT VISIT A PUB THAT IS CLOSER
THAN YOU THINK AND WHICH ALWAYS
OFFERS A 'MINI BEER FESTIVAL'*



THE MORRELLS STORY

Oxford has a centuries old history of brewing including monasteries and colleges.

In 1782 Mark and James Morrell bought a small brewery in St Thomas's, Oxford from Richard Tawney, a former boatmaster. Morrells is now the oldest family-run business in the city having been owned or managed by six generations of the Morrells family.

The two brothers diversified into other areas such as banking and bought many pubs in the surrounding area. When James Morrell's son, also James, and his wife Alicia died in 1863 they left a ten year old daughter, Emily.

A trust was set up to act as her guardians and to run the brewery. Despite objections from the trustees, Emily eventually married her cousin George Herbert Morrell when she was 20.

By the 1880's the brewery had been modernised and by the next decade it was one of the leading family-owned breweries in the country. In the 1930s Emily and George Herbert's son James (Jimmy) ran were running the company and the beers produced at the time included brown ale, best bitter, porter, stout, College Ale and a Proctor Ale.

Emily died in 1938 and the company was restructured by her descendants. A limited company was formed in 1943 with Jimmy as chairman and managing director. The original trust was wound up and two new trusts formed

owning 31% of the shares Margaret Eld, Jimmy's daughter, became a director in 1944 and Mary Luard, another daughter, joined in the 60s. Jimmy's only surviving son Colonel Bill Morrell took over from him when he left the Royal Artillery.

The company fought off takeover bids between the two World Wars from Ushers of Trowbridge and from Whitbread in the 1960s.

Charles Eld joined the brewery as assistant managing director in 1982 and later became managing director.

On May 28th this year Charles Eld was sacked by the board after an attempt, with his mother, Margie, to buy a majority of shares in the company in order to try to gain control from the trustees who, the Elds thought, planned to sell the brewery and its pub estate.

On 1st July Margie Eld announced her resignation from the company and verbally attacked the remaining directors whom she said were bent on the 'needless destruction of a sound family business'.

Oxford, famed for its college brewed ales, is about to lose its last remaining commercial brewery.

There are rumours that both Fuller's and Scottish & Newcastle breweries are interested in buying the tied estate, but the brewery itself is probably too valuable for property development to stand any chance of survival.

IS THERE NO HOPE FOR MORRELLS?!

Pat & Danny Kinnard FBII & FCL
offer you a warm welcome to

The Black Boy



Church Lane, Oving, Nr Aylesbury, Bucks HP22 4HN
Tel: 01296 641258

A LA CARTE RESTAURANT **SUNDAY LUNCHES**
Open 7 days a week (Booking advisable)

BAR FOOD **LOVELY GARDEN WITH**
7 days a week **PANORAMIC VIEWS**

ALL PARTIES & FUNCTIONS **COACHES WELCOME**
CATERED FOR **CAR PARK**

Aylesbury Vale Pub of the Year 1997

A Warm Welcome To The Clayton Arms

16 Oxford Road
Marlow
Bucks. SL7 2NL
Tel : 01628 - 478620

Traditional Family Run Pub Offering :-

Home Cooked Lunches & Snacks

Finest Brakspears' Ales

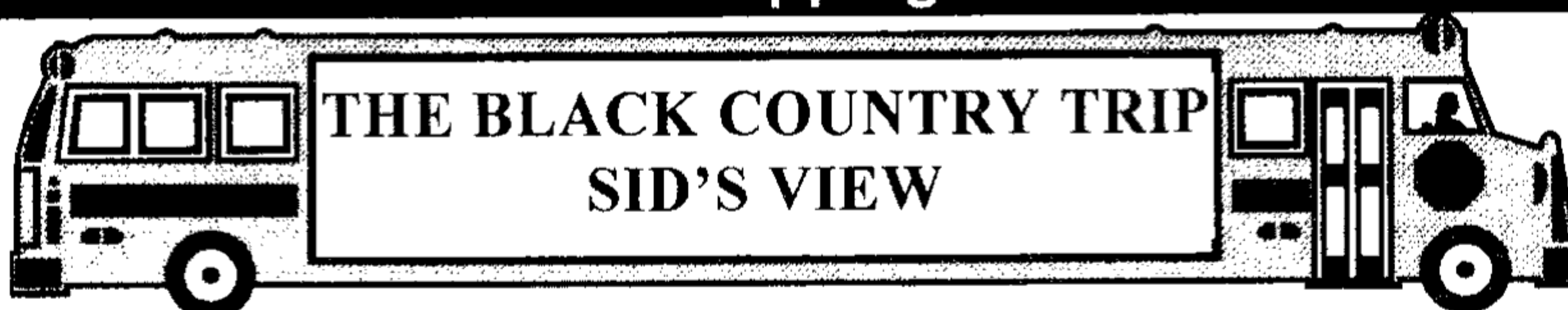
Summertime Patio Area

Non-Smoking Dining Area
Suitable For Families

AS SEEN IN THE 'GOOD BEER GUIDE'

Swan Supping

The branch held its annual Black Country Pub Trip on 6th June this year. This is an account of the day out!



Saturday morning, feeling slightly fragile, woke to an unsettled weather forecast. Decided to take a towel in case of rain.

Met the coach at the Broad Leys pickup point in Aylesbury, and then on to High Wycombe collecting more participants en-route to the M40.

Everything starts on schedule.



When all aboard and heading north, the coach driver performed the mandatory speech about location of exits etc (no stewardess giving hand signals though!) and wished us a pleasant day.

Off the motorway and the first stop.

The Coach and Horses, Weatheroak. Nice pub, welcoming staff and their own beer '*Weatheroak Bitter*'. Just right for the first pint of the day, clean hoppy and light.

Good range of guest ales but sadly their other beer – '*Chestnut Ale*' was not available.

Most of the ensemble took the offer of a quick tour of the brewery (I chose a pint of *Highgate Dark* mild instead). Off for lunch! **The Little Chop House.**

Banks Little Puck went down well with Barnsley Chop & Chips – slight problem with the chips, each plate held enough for 3 people, very good value. Glad I did not order the Desperate Dan Pie as they looked enormous (Delicious - Ed.).

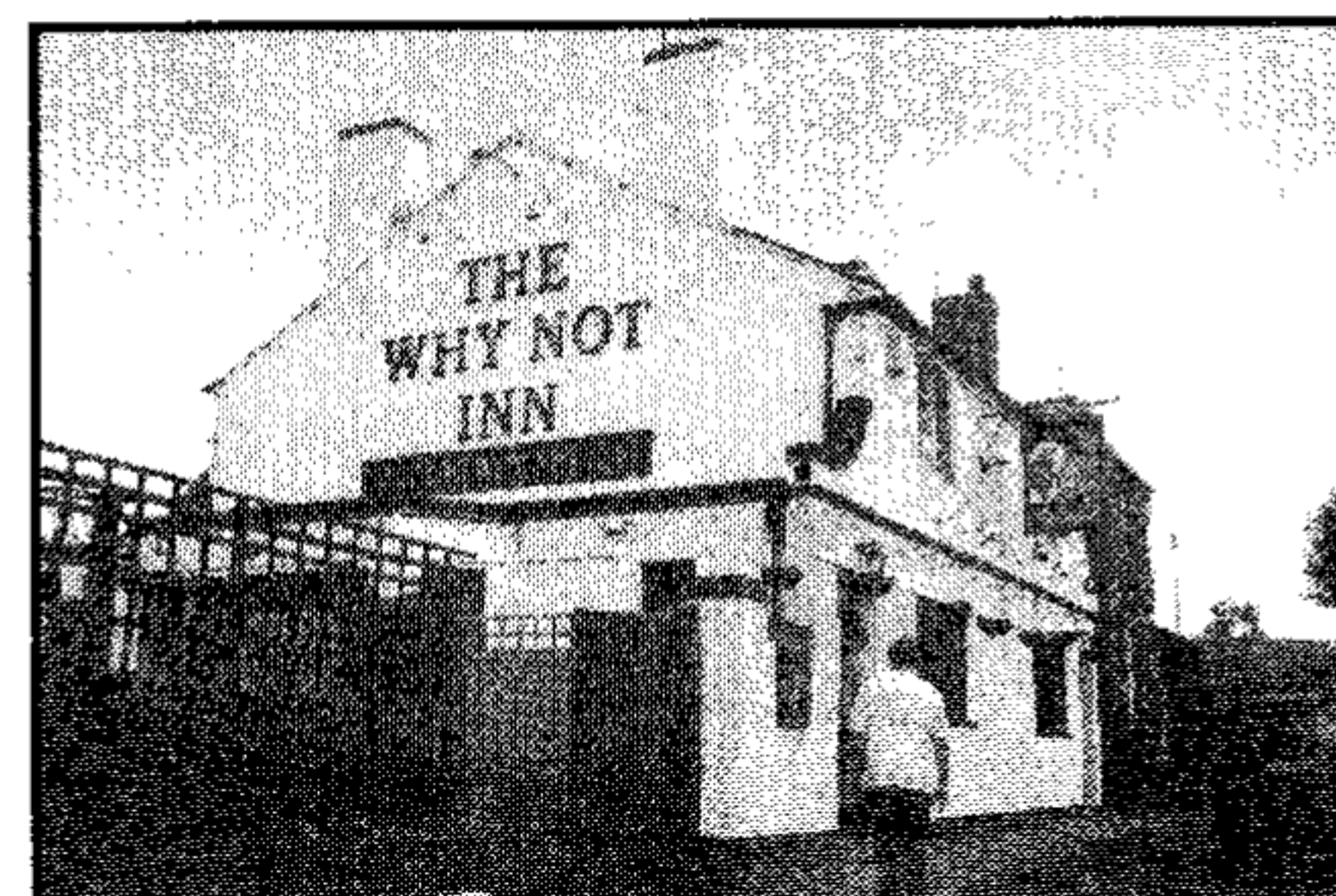
On to the **Why Not.**

Only a short distance but navigation problems caused a slight case of *deja-vue*, cured by turning right at the

correct point. Pub found and time for *Theakstons mild*.

Now to Delph.

The sky looked threatening so decided to forgo the walk and ensconced myself in the **Bull and Bladder** with a pint of *Bathams Mild*.



The next one on the tour was the **Park Inn, Woodsetton.**

Mild again, this time *Holdens Mild*. We may have arrived early as when the lone barman had finished serving our coach load of tipplers the evening staff arrived!

On to Sedgley and the **Beacon Hotel.** Having been here before, persuaded Dave to pick up a 4 pint carry-out of *Sarah Hughes Ruby Mild* for me

'Grandma's Quilt'

at the

KING'S HEAD

Prestwood

Marston's Real Ales

including

Owd Roger

Pedigree

Bateman's Dark Mild

Finest Homestyle

rural American

and English Fare

ALL DAY

EVERY DAY

Comfort and friendly service

with a difference



01494 868101

BOLLHAYES CIDER

MADE ONLY FROM PURE
UNDILUTED APPLE JUICE
PRODUCED FROM
TRADITIONAL ORCHARDS IN
THE BLACKDOWN HILLS.

LIMITED QUANTITY AVAILABLE FOR
£29.96 INC. VAT PER 15 LITRE
MANUCUBE, (APPROX. £1.15 PER PINT),
WITH TAP, PLUS £10 REFUNDABLE
DEPOSIT. APPROX. 7% ALCOHOL.

CONTACT ROSS WILLIAMS
ON 01844 291391 FOR DETAILS.

Swan Supping

whilst I dropped in on some old friends in the **Crown**. Quick pint of *Banks Mild* and then round to the **Bulls Head** for another pint of *Holdens Mild*, then a taxi to catch up with the coach at Halesowen. Halesowen and **The Wagon and Horses**.



My Favourite pub of the whole trip. Sometime I will spend a full day here just to sample most of their guest ales. (I think there were 15 this time). Decided to try '*Lakeland Amazon*' and was very pleased with the ale. The landlord was his usual self, partway through redecorating and explaining why the curtains had not gone back up. His philosophy is that you paint overnight after closing and then the next day when the paint is



dry, re-hang the curtains. The only problem with this was that every time he tried to put up the curtains, customers came in and required drinks. On the principle that customers come first he thinks the curtains may be up by the end of the month.

I came on the Black country trip, primarily to try various milds and this I succeeded in. As usual the warmth of welcome from the various pubs, both staff and customers was exceptional and I had a great time. My thanks to the organisers, especially the navigator, I gather he played Grumpy in *Snow White* at the age of 11. The coach driver deserves a special mention as well.

Sid Seton (7th June 1998)

Useful Addresses

CAMRA HQ:

230 Hatfield Road, St Albans, Herts AL1 4LW.
Tel: 01727 867201 Fax: 01727 867670
E-mail: camra@camra.org.uk
Internet: <http://www.camra.org.uk>

Trading Standards:

For complaints about short measure, price lists, strength lists (Alcohol by volume), etc.

Aylesbury:

County Hall, Walton Street, HP20 1UP
Tel: 01296 383212

Oxford:

PO Box 618, County Hall, OX1 1DX
Tel: 01865 815000 (Mon - Fri 8:30am-5pm)

Planning Department

For comments, complaints or objections about pub alterations or developments -

Aylesbury:

AVDC Planing Dept, Exchange St, Aylesbury
HP20 1UB Tel: 01296 585406

Advertising Standards Authority:

For complaints about deceptive advertising-
Advertising Standards Authority
Brook House, 2-16 Torrington Place
London WC1E 7HN

OLYMPIA



4-8 AUGUST



Bryan welcomes you to
The Huntsman
 Walton Court, Aylesbury

FULLERS LONDON PRIDE
 Plus 'Guest' Beers



BIG Screen TV

Music Quiz Thursdays



Tel: 01296 429588

**Old Luxters
 Brewery**



Traditional
 Ales
 and Bottle
 Conditioning

Tel 01491 638330

Branch Area Map



Membership News

We would like to extend a big welcome to the following new members who have recently joined CAMRA or moved into our area:

Shabbington - Mr Ivan Roberts; **Booker** - Mr Jim Cox; **Weston Turville** - Mr Peter Walker; **Haddenham** - Mr Peter Sumerskill; **Wendover** - Mr Andrew Hastings; **Thame** - Mr Darren Baker.

The landlord of the Red Lion in Stoke Talmage has also joined. Unfortunately this excellent pub is just outside our branch area in South Oxfordshire - Shame!

If you want to join the campaign fill out the membership form on page 11 or come along to one of our meetings to find out more. A full list of our meetings and socials is on the back page.

Branch Contacts

Chairman	David Roe	01296 484551
Treasurer	Tony Gabriel	01494 527884
Secretary	Bryan Spink	01296 429588
Bierton	Nick Holt	01296 483554
Aylesbury	Mick White	01296 428266
Beaconsfield	Colin Staines	01494 674427
Bledlow Ridge	Ben Walter	01494 481459
High Wycombe	Elvis Evans	01494 511248
Marlow	John Williamson	01628 486378
Stokenchurch	John Bazin	01494 483039
Wendover	John & Tina Wood	01296 625215



Wycombe Wines



Specialists in Real Ale to take home.



20 Crendon Street
 High Wycombe
 Bucks

Telephone : 01494 437228

WHY NOT ADVERTISE IN SWAN SUPPING

You can reach a targeted
audience of pub goers for as
little as £4.50 per issue

**THE WORLD'S
BIGGEST PUB**


CAMPAIGN
FOR
REAL ALE

**21ST GREAT BRITISH
BEER
FESTIVAL**

**LONDON
OLYMPIA**

4th-8th AUGUST 1998



BOOKS



If you're travelling round Europe this Summer, then CAMRA has produced some excellent guides to the beers and bars of the best beer producing countries. The latest of these is a new edition of the *Good Beer Guide to Belgium, Holland & Luxembourg*.

In its 300 pages it has details of all 118 Belgian, 46 Dutch and 5 Luxembourgish breweries and a guide to almost 500 specialist beer cafes. There's an introduction to cooking with beer (*cuisine à la bière*) and a guide to sights of interest. If you fancy bringing some beer back with you there's a guide to specialist off licences and warehouses.

The editorial of the book attacks the poor quality international brand lagers drunk in the UK and predicts booming sales of Belgian ales in supermarkets, off-licences, restaurants and specialist pub chains. Abbey beers such as the Kapittel, Witkap, Maredous, Floreffe and St Bernadus ranges are defended from recent attacks by consumer groups. The author, Tim Webb, says that the best of these are better than some Trappist beers.

This is the third edition of the book. It has been expanded to include Luxembourg and include more extensive information about the cafés.

Good Beer Guide to Belgium Holland & Luxembourg
Published by CAMRA Books Ltd ISBN No. 1-85249-115-9
Available from regular bookshops price £9.99. CAMRA members can buy it from CAMRA HQ for £9 (inc P&P).



The Bell, Bierton

Traditional village pub

Meals served 7 days a week:

Lunchtimes: 12.00 - 2.30pm

Evenings: 6.00 - 9.30pm

*All meals prepared and cooked
in our own kitchen (not frozen meals)*

**Live JAZZ last Sunday of every month
(no food available on jazz evenings)**

191 Aylesbury Rd, Bierton, Aylesbury, Bucks

Tel: 01296 436055

Listed in the 1998 Good Beer Guide
FULLER'S ALES



EST. 1851



The House of
Dayla

**JOIN THE
GREAT DAYLA
ALE TRAIL**

**Over 400 Ales
Available Throughout
The Thames Valley**

*A Family Firm
since 1851*

**Tel: 01296 420261
Fax: 01296 397012**

**High Street,
Aylesbury, Bucks
HP20 1QZ**

KNOW YOUR BEER

real ale, a name for draught (or bottled) beer brewed from traditional ingredients, matured by secondary fermentation in the container from which it is dispensed, and served without the use of extraneous carbon dioxide.

Oxford English Dictionary (Second Edition)

CASK SIZES

Traditional cask sizes are all derived from the 36 gallon barrel. The sizes are;

4.5 Gallons	Pin (now quite rare)
9 Gallons	Firkin
18 Gallons	Kilderkin ('Kil' or 'Kiln')
27 Gallons	Half Hogshead (very rare)
36 Gallons	Barrel
54 Gallons	Hogshead (rare, North of England only)

The metric system has produced another set of sizes that are now commonly used. No names have been coined for these sizes:

25 Litres	about 5.5 Gallons
50 Litres	about 11 Gallons
100 Litres	about 22 Gallons
150 Litres	about 33 Gallons

MONSTER BREW

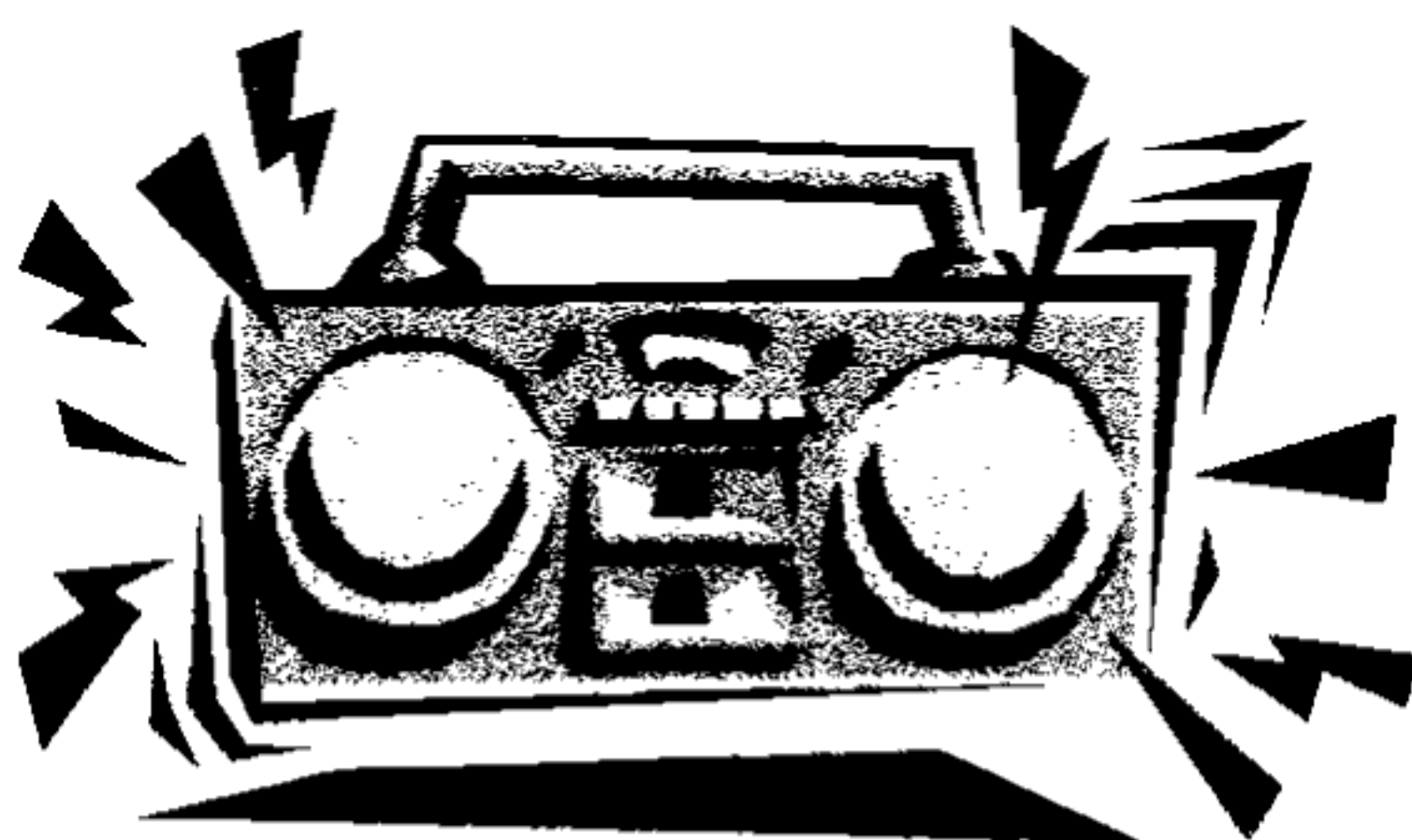
Aylesbury's radio station, *MIX 96*, is running a promotion in the next few months with its own beer. *Mix 96 Monster Ale* is being brewed by Chiltern Brewery in Terrick and will be available for a limited period in only twelve participating pubs.

The beer will be launched at a Celebrity Pub Quiz on 14th August at Aylesbury United Football Club with teams from each of the pubs. Ads on the station will promote the beer and pubs until October.

Mix 96 Monster Ale is a Summer beer with added body. The 4% ABV brew is a golden honey colour and is made from English malt and choice English hops.

The twelve pubs where you can find this special ale are:

Lone Tree, Thornborough
Bricklayers Arms, Aylesbury
Aylesbury United Football Club
End of the World, Wendover
Red Lion, Wendover
Cock, Wing
Lions of Bledlow, Bledlow
Rising Sun, Haddenham
Red Lion, Whiteleaf
Pink & Lily, Lacey Green
Red Lion, Marsworth
Cock & Rabbit, The Lee



CELEBRATING 21 YEARS !

This year the Campaign for Real Ale's Great British Beer Festival is 21 years old. It is the biggest beer festival in the UK and has a larger variety of beers on sale than the famous Munich Beer Festival. With over 1000 volunteers from all over the country serving over a quarter of a million pints it will again be a celebration of good ale.

The festival started off at Alexandra Palace in North London where it stayed for several years until the venue burnt down in 1980. At one of these events the Monty Python comic, Terry Jones, opened the festival by pouring a pint of beer over his head!

The festival then moved to Leeds and into an ex tram shed called the Queens Hall where it stayed for two years (81 and 82). There was a one year sojourn to the Bingley Hall in Birmingham which also burnt down in 1984. Birmingham saw the introduction of the family area which really came into its own when the festival moved to Brighton in 1985 after having a year off.

At this time there was no all day licensing and the volunteer staff used to enjoy a break between sessions on the beach. Brighton hosted the festival for three years before it went North again to Leeds. Unfortunately the Queens Hall closed in 1990 to make way for a car park, This led to the festival going to Brighton for a fill in year before heading back to the capital.

In 1991 the **Great British Beer Festival** (or **GBBF** as it is known) was held in the Arena in London's Docklands. Although a great venue for seating, poor transport led to the organisers considering an alternative venue. From 1992 the **GBBF** has been held at Olympia. It started off in the Grand and West Halls and has now migrated into the National Hall as well (a mini version of the Grand Hall). Over the years in London, the imported beer bar has grown, the entertainment is more varied and the food more different. But one thing that has not altered is the commitment to British real ale.

At the early festivals it was possible to have every brewery that produced real ale. There were around 90 brewing companies in Britain in 1977. Now, the estimates are that there are over 400 breweries including the growing number of pub breweries, and, with most breweries having at least three beers, there are over 2,000 real ales. The 1998 **GBBF** will have over 300 of them providing a good selection of the best real ales in Britain. There can be no better way to celebrate real ale than by joining in the celebrations at this year's **Great British Beer Festival** and trying one or two!

Mick and Wendy Rolley

The White Hart Quainton

(Nice Pub, shame about the Landlord)

ABC Bitter

Fullers London Pride, Wadworth 6X,
Guest Beers

Evening meals served until 21:00
(Not Mon or Thu).

Bar Snacks available until 22:45.

Bed & Breakfast £25.00 p.p.p.n (inc V.A.T)
En Suite Room/Colour T.V./Tea/Coffee
English Tourist Board Approved (2 Crowns)

4 The Strand,
Quainton
Aylesbury
Bucks
HP22 4AS

Tel : 01296 655234



APPLE Cider and Perry

Bollhayes Cider is exclusively available in limited quantity to our membership. It is carefully produced only from pure, untreated, undiluted apple juice obtained from the traditional apple orchards of the Devon Blackdown Hills. From his smallholding, Alex Hill makes an annual quantity of only 3000 gallons of dry, full strength, unfiltered cider reaching approximately 7% alcohol. The 1997 crop underwent its cool winter fermentation, and was then racked into 100 gallon oak casks during April to undergo its secondary fermentation. Over the past 10 years Bollhayes Cider has won First prize at the Devon County Show, and the Bath and West of England Show. It has been featured on the BBC Food and Drink program, and was described by Oz Clark as "a superb drink". A limited quantity of Bollhayes Cider is on sale in a 15 Litre manucube (with tap), at £29.96 inc. vat (approx. £1.15 per pint), plus a £10 refundable deposit on the manucube. Contact Ross Williams on 01844 291391 for details.

CIDER AND PERRY AWARDS

This year's CAMRA Champion Cider of the Year is *New Forest Traditional Cider* produced in a small Hampshire smallholding. It is made exclusively from Kingston Black apples from Herefordshire to produce a unique bitter sharp flavour. The Champion Perry award went to Dunkertons of Herefordshire. Dunkertons started in 1982 and has its own shop and cider restaurant serving perry and cider straight from the wood. Its ciders and perries are made from fruit from their own organically grown trees.

TOP PUB IS A WILLING VOLUNTEER

The Scottish pub, the **Volunteers Arms** in Musselburgh (near Edinburgh) has received CAMRA's top award, the National Pub of the Year. Owned by the Stagg family since 1858, the pub is very much a 'locals bar' - there is no music and the drinkers are assured of a warm welcome. The bar features dark wood panelling, a superb gantry topped with old casks and mirrors from long closed breweries.

The runners up in the competition were **The Old Spot** in Dursley, Gloucestershire, **The Three Kings**, Hanley Castle, Worcestershire and the **Windsor Castle**, Carshalton.

RESCUE BID

Whitbread's threatened Castle Eden brewery may be saved. A consortium of North East businessmen hope have made a bid for the brewery site

and hope to continue brewing there if successful. The October 1st deadline for the sale may be extended according to Whitbread Beer Company MD, Miles Templeman.

CHRISTMAS CANCELLED

The World's strongest beer, Samichlaus, or Santa Claus Beer, has been axed following the merger of the Hurlimann and Feldschlössen breweries in Switzerland.

RUDDLES BURIED

Rutland MP, Alan Duncan, joined a CAMRA demonstration against the closure of the Ruddles brewery by Morlands of Abingdon. He helped bury a PET bottle containing cask county as a symbol of the death of one of Britain's most famous breweries. The Langham site has been a brewery for 140 years.

JOIN CAMRA TODAY

Just fill in the form below and send your remittance (payable to CAMRA) to
Membership Secretary, CAMRA,
230 Hatfield Road, St Albans, Herts, AL1 4LW

Rates are Single £14, Joint £17 (at same address),
Student/OAP/Unemployed/Disabled £8
Joint OAP £11 (at same address)
Under 26 £8 date of birth _____
For Life/Overseas rates, please ask for details.

Name(s).....

Address

Postcode

I/We wish to join the Campaign for Real Ale, and agree to abide by the Rules.

I enclose a cheque for £.....

Signature

Date
AYL (SWAN SUPPING)

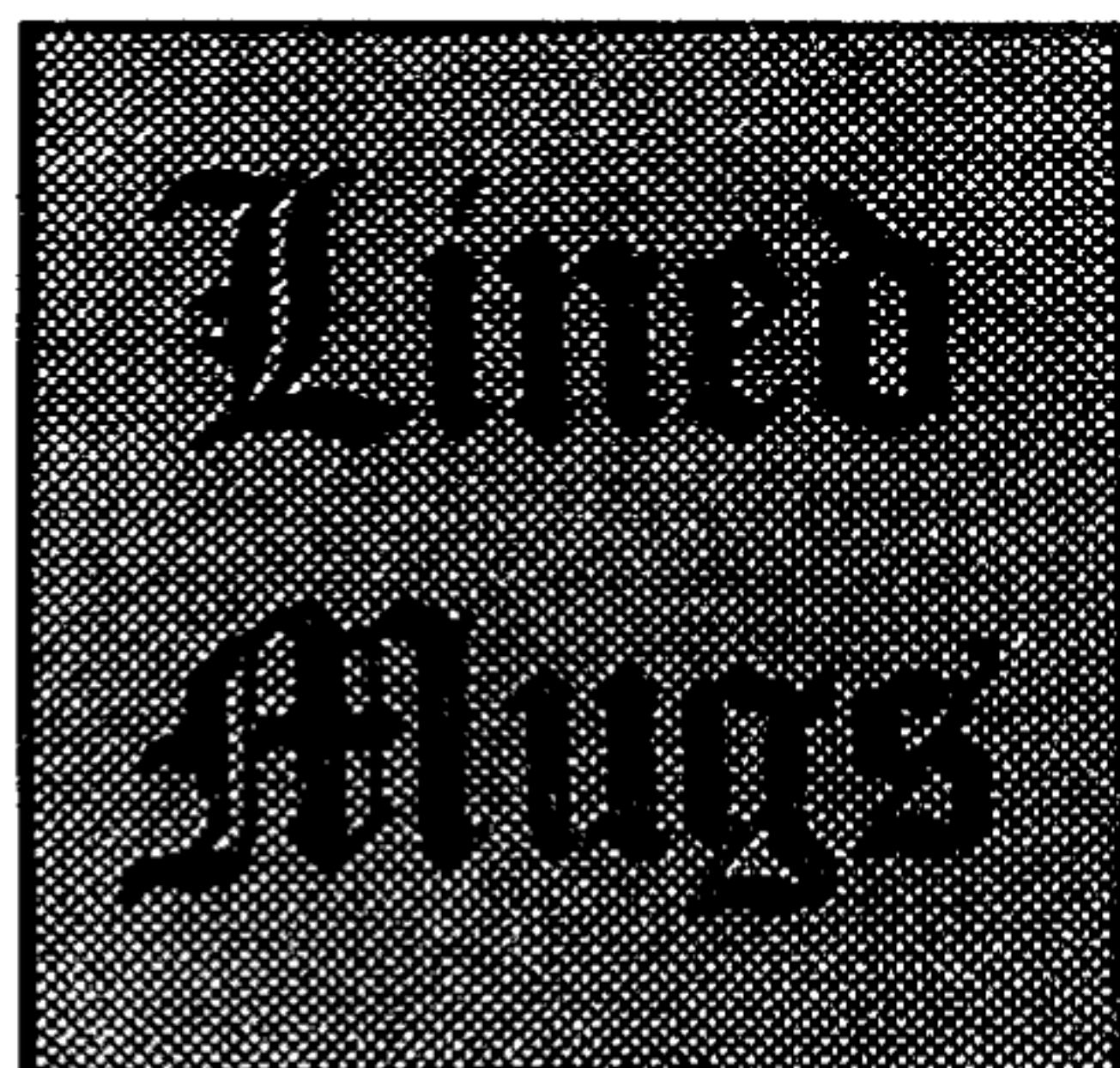


PRICES KEPT LOW

CAMRA's annual prices survey has shown that, for the third year running, the increase British beer prices has kept to the level of inflation. The average pint of a pint is £1.71 compared to £1.64 a year ago. The figure varies widely by region with London seeing the highest rise of 7.3% and the North West seeing a rise of only 2.8% with average prices of £1.92 and £1.47 respectively.

Independent brewers prices are beginning to catch up with their national rivals. (£1.73 and £1.68). In the midlands the average price this year was the same as last year at £1.55.

It is thought that competition from cross channel shopping has helped to keep the prices down. CAMRA's Campaign and Research Assistant, Mel Taylor, said 'If the Government hadn't increased beer tax, the price of a pint would hardly be up at all'.





Branch Diary

Everybody welcome to all socials and meetings!

August

Monday 10th Social

9:00pm Russell Arms, Butler's Cross, 10:00pm Swan, Great Kimble

Wednesday 19th Bourne End Walkabout

8:30pm Firefly, 9:30pm Bounty, 10:30pm Garibaldi

Tuesday 25th Social

9:00pm Crown, Granborough, 10:00pm Olde Jug, Hardwick

Sunday 30th Midday Towersey Social

Noon get-together at Three Horseshoes to coincide with the Towersey Village festival

September

Tuesday 1st High Wycombe Social

9:00pm Beaconsfield Arms

Friday 4th - Sunday 6th Beer Festival

Wingrave Community Centre

Monday 7th Aylesbury Social

9:00pm Farmyard & Firkin, 10:00pm County Arms

Friday 11th - Saturday 12th Beer Festival

Rising Sun, Haddenham

Wednesday 16th Thame Social

9:00pm Nag's Head, 10:00pm Abingdon Arms

Monday 21st Branch Meeting

8:30pm Red Lion, Bradenham

Monday 28th Askett Social

9:00pm Black Horse, 10:00pm Three Crowns

October

Thursday 8th Good Beer Guide 1999 Launch

Cock, Wing (Beer Festival) - Details in next issue

Saturday 10th Regional CAMRA Meeting

2:00pm Bridge, Fenny Stratford (CAMRA members only)

Friday 16th London Pub Crawl

Advance notice - Details in next issue



Beer Festival Diary

August

4th - 8th **GREAT BRITISH BEER FESTIVAL, OLYMPIA, LONDON**

14th - 15th **Cornwall**, Hall for Cornwall, Truro

21st - 22nd **Portsmouth Beer Festival**, The Guild Hall

25th - 30th **Peterborough Beer Festival**, The Embankment

27th - 30th **Clacton-on-Sea**, St James Church Hall

28th - 31st **R&B Blues Festival**, Pendle Leisure Centre, Colne, Lancs

28th - 29th **Mumbles Beer Festival**, Ostreme Centre, Mumbles, Swansea

28th - 30th **High Peak & NE Cheshire**, Glossop Rugby Club

September

4th - 6th **Wingrave Community Centre - See ad on page 3**

4th - 5th **Harbury**, Village Hall (Nr Leamington Spa)

4th - 5th **Huddersfield**, Zeneca Club, Leeds Road

4th - 5th **Solihull & District**, The Golden Lion, Warwick Road

5th **Maidstone**, Museum of Kent Life

9th - 12th **Stoke on Trent**, Students Union, Staffordshire University

10th - 12th **Sheffield**, Hallam Union, Nelson Mandela Building, Pond St

11th - 12th **Rising Sun, Haddenham - See ad on page 7**

11th - 12th **Boston Beer Festival**, Assembly Rooms, Boston

11th - 12th **Shewsbury Real Ale Festival**, Music Hall, The Square

12th - 13th **Cider & Perry Fest**, Brogdale Horticultural Trust, Faversham

17th - 19th **Birmingham Beer Festival**, Aston University Students Guild

17th - 20th **Booze on the Ouse**, Burgess Hall, St Ives, Cambs

17th - 19th **North Hertfordshire**, Plinston Hall, Letchworth, Herts

17th - 19th **'Rhythm 'n' Brews'**, Arts Centre, Darlington

18th - 19th **Northwich**, The Memorial Hall, Northwich, Cheshire

24th - 26th **Burton Beer Festival**, Burton upon Trent Town Hall

24th - 26th **Keighley**, Worth Brewery, Keighley

24th - 26th **Twickenham**, York House, Richmond Road, Twickenham

25th - 27th **Severn Valley Railway Beer Festival**

30th - 3rd Oct **St Albans**, The Albans Arena

October

1st - 4th **Scunthorpe**, The Baths Hall, Doncaster Road

7th - 10th **Bedford**, The Corn Exchange

8th - 11th **Cock, Wing**

16th - 17th **Bath**, The Pavillion, North Parade Road

23rd - 24th **5th Vale of Aylesbury Beer Festival**

Held at The Ranch House, Aylesbury. This is a charity beer festival, organised by the Friends of Florence Nightingale House with assistance from the Aylesbury Vale and Wycombe Branch of the Campaign for Real Ale.

29th - 31st **Cardiff Beer & Cider Festival**, Star Centre, Splott Road

30th - 31st **North Hampshire**, St Lukes Hall, Overton, Nr Basingstoke

30th - 31st **Worthing**, Richmond Rooms, Stoke Abbot Road

Ian Brown and his staff welcome you to

The Queen's Head

The Village Pub In The Heart of Aylesbury



**Bar Snacks & Full Meals Menu
available Lunchtimes & Evenings**

New separate function room/restaurant
which will specialise in Cajun food

Regular Food Theme Evenings

Private Parties Catered for

Bed & Breakfast Accomodation

Company Quiz Nights League Sept - April
**Four Real Ales and the largest selection of
Malt Whiskies in the Area**

Temple Square, Aylesbury, Bucks. HP20 2QA

Tel: 01296 415484

Swan Supping

Swan Supping is distributed free of charge to pubs in the branch area. Published by the Aylesbury Vale & Wycombe branch of the Campaign for Real Ale and printed by Northridge Printing Services Limited, Unit 13-14, Bessemer Crescent, Rabans Lane, Aylesbury, Bucks HP19 3TF.

Circulation 1500 copies.

Edited by Bryan Spink & David Roe.

Editorial Address : 15 Bedwyn Walk, Aylesbury, Bucks HP21 8EQ.

Tel/Fax : David 01296 484551, Bryan 01296 429588

Tel : Bryan 0410 147528 (mobile)

E-Mail : bryan_spink@bucks.net

Advertising rates are :- 1/16 page £5, 1/8 page £15, 1/4 page £25, 1/2 page £50. Add 10% for front page adverts. 10% Discounts for payment in advance.

Copy deadline for next issue, due to be published on 1st Oct is 14th Sep.

Subscriptions :- To receive editions of Swan Supping by post, please send SAEs to the Editor.

©Aylesbury Vale & Wycombe CAMRA 1998. Opinions expressed in Swan Supping are not necessarily those of the editor, or the Campaign for Real Ale. Acceptance of an advertisement in Swan Supping by a pub does not guarantee CAMRA approval of the outlet.