



Autumn 1997

Swan Supping

FREE



Campaign for Real Ale

Aylesbury Vale & Wycombe Branch

Issue 3

4th Vale of Aylesbury Beer Festival

Last year saw the third Vale of Aylesbury Beer Festival and the most successful yet. The first was held on a wet Saturday in November 1994 and, despite relatively poor sales it was decided to hold the festival again the following year at a new venue. The Ranch House has been home to the festival ever since and the festival is now established as a profitable event for the charity which organises it. Last year was a sell out, with all the beer, cider and perry being drunk by 7pm on Saturday. Extra beer has been ordered this year to cater for the anticipated turnout so, if you can't get there until Saturday, you won't be disappointed. New taps will ensure the beer will flow quicker than last year.

The festival is organised by The Friends of Florence Nightingale House, a charity supporting the work of the Aylesbury Hospice. All profits from the sale of the drinks and admission goes to the charity. Every barrel is sponsored by local businesses or groups of individuals. In return for their sponsorship they get an ad in the programme and their name on the end of their barrel.



WIN TICKETS TO THE FESTIVAL

See Page 9

Volunteer members of the local branch of **The Campaign for Real Ale** help out by using their expertise to prepare and care for the beer and to man the bar during opening hours. We will have a stand where a selection of CAMRA products will be available, including our own local guide at a special price and the new 1998 *Good Beer Guide*. Don't forget your CAMRA membership card to buy the guide at the special members price. You can join at the festival and take advantage of the discounts. Tickets for the festival are available in advance from selected local pubs, from the hospice shops or from the Friends of Florence Nightingale House, 6 Manor House Close, Manor House, Birtton Road, Aylesbury. Tel 01296 29975. They cost £1.50 in advance which includes your first pint. Tickets will also be available on the door at £2.50.

How to get there!

The Ranch House is on the Stoke Mandeville Road out of Aylesbury. Buses 323/324/325 run from Aylesbury Bus Station bay 6 and High Wycombe Bus Station bay M and pass the Ranch House at roughly every 30 minutes. The last bus back to Wycombe is at 22:40 and to Aylesbury at 22:22.

BREWERIES TO CLOSE



On 25th September Carlsberg-Tetley announced that it will sell off or close three of its remaining breweries including the Burton upon Trent brewery with the loss of 1500 jobs.

The Birmingham Head Office is closing and operations are being transferred to the Northampton brewery. They have also announced a £40 million investment program for the two remaining breweries in Northampton and Leeds.

Bass has indicated that it is interested in buying the Burton brewery. If they don't the plan is to close the site by April 1999. The Alloa brewery will close by next May and the Wrexham brewery by October 1999, unless a buyer is found.

The sale of the breweries comes as a result of the government's decision to block the sale of the brewer to Bass.

CAMRA, the Campaign for Real Ale, has condemned the announcement by Carlsberg-Tetley. Ben Wardle of CAMRA said "This is horrific news for beer drinkers. Award winning beers like Burton Ale will vanish forever and consumer choice will be heavily curtailed. Decades of brewing heritage are being poured away like old slops. This is probably the worst closure in the world." We will do everything we can to try and halt these closures.

to try and halt these closures. Carlsberg-Tetley's decision will result in nothing less than brewery carnage." he said. "We hope a buyer can be found for the Burton brewery as a going concern."

Mr Wardle continued "The closure of Alloa will destroy choice for Scotland's beer drinkers leaving the market firmly in the hands of just two companies. Scotland voted 'yes, yes' but Carlsberg Tetley have given them an emphatic 'no, no' to consumer choice."

"The Wrexham brewery has produced traditional lagers in Wales for over a hundred years. Welsh drinkers will lose a much loved drink."

THREAT TO CHOICE

CAMRA has also slammed Allied Domecq's attempts to escape from the Beer Orders. The Orders require national brewers to restrict the size of their pub estate and to allow tenants to take a guest cask-conditioned beer from a supplier of their choice. The order covers UK breweries with more than 2,000 pubs.

Allied Domecq has asked the Office of Fair Trading for an alteration to the legislation to ensure that large pub chains with brew pubs are not covered. If freed, Allied Domecq could expand its

(Continued on page 3)

Swanning About in Wendover - See Page 5
London Pub Crawl - See Page 6

Swan Supping

Swan Supping

Swan Supping is distributed free of charge to pubs in the branch area. Published by the Aylesbury Vale & Wycombe branch of the Campaign for Real Ale and printed by Northridge Printing Services Limited, Unit 13-14, Bessemer Crescent, Rabans Lane, Aylesbury, Bucks HP19 3TF.
Circulation 1500 copies.

Edited by Bryan Spink & David Roe.

Editorial Address :

15 Bedwyn Walk, Aylesbury, Bucks HP21 8EQ.

Tel/Fax : 01296 425764 (H) 0410 147528(M)

E-Mail : bryan_spink@bucks.net

Advertising rates are :- 4.5 x 4.5cm £5, 4.5 x 12.5 cm or 9 x 6.25cm £15. 9 x 12.5cm £25.
10% Discounts for payment in advance.

Copy deadline for next issue, due to be published on 14th January is 6th January.

Subscriptions :- To receive editions of Swan Supping by post, please send SAEs to the Editor.

©Aylesbury Vale & Wycombe CAMRA 1997. Opinions expressed in Swan Supping are not necessarily those of the editor, or of the Campaign for Real Ale.

CONTACTS

Chairman	David Roe	01296 484551
Treasurer	Tony Gabriel	01494 527884
Secretary	Bryan Spink	As above
Regional Director	Nick Holt	01296 483554
Aylesbury	Mick White	01296 428266
	Stuart Cooke	01296 392597
Beaconsfield	Colin Staines	01494 674427
Bledlow	Ben Walter	01494 481459
High Wycombe	Elvis Evans	01494 511248
Marlow	John Williamson	01628 486378
Stokenchurch	John Bazin	01494 483039
Wendover	John & Tina Wood	01296 625215

New Readers Start Here

The Campaign for Real Ale, is an independent, voluntary, consumer organisation. Membership is open to all individuals, but corporate entities such as breweries and pubs are not members.

CAMRA is financed through membership subscriptions, sales of products such as books and sweatshirts, and from the proceeds of beer festivals. We receive no funding from the brewing industry other than a limited amount of advertising in our monthly newspaper "What's Brewing".

CAMRA's mission is to act as champion of the consumer in relation to the UK and European beer and drinks industry. CAMRA saved real ale, it is no exaggeration to say, and as a result saved many independent breweries. No new ale breweries were set up in the UK for the fifty years before we were founded. There are now around 200 new brewers producing real ale, part of a massive real ale revival.

Membership has grown from around 20,000 in 1989 to over 50,000. So why not join us? See the back page for a membership form or come to one of our socials to find out more.

Branch Area Map



Useful Addresses

CAMRA HQ:
230 Hatfield Road, St Albans, Herts AL1 4LW.
Tel: 01727 867201 Fax: 01727 867670
E-mail: camra@camra.org.uk
Internet: <http://www.camra.org.uk>
Trading Standards:
For complaints about short measure, price lists, strength lists (Alcohol by volume), etc.
Aylesbury:
County Hall, Walton Street, HP20 1UP
Tel: 01296 383212
Oxford:
PO Box 618, County Hall, OX1 1DX
Tel: 01865 815000 (Mon - Fri 8:30am-5pm)
Planning Department
For comments, complaints or objections about pub alterations or developments -
Aylesbury:
County Hall, Walton Street, HP20 1UP
Tel: 01296 383205
Advertising Standards Authority:
For complaints about deceptive advertising-
Advertising Standards Authority
Brook House, 2-16 Torrington Place
London WC1E 7HN

Where to Find Swan Supping

The following is a list of outlets for the last issue of Swan Supping.

Pubs

Ashendon : Gatehangers; Aylesbury : Aristocrat, Buckinghamshire Yeoman, County Arms, Farmyard & Firkin, Grapes, Hobgoblin, Horse & Jockey, Huntsman, Plough & Harrow, Queens Head, Ship; Bennet End : Three Horseshoes; Berton : Bell; Cadmore End : Ship; Cublington : Unicorn; Frieth : Prince Albert; Haddenham : Red Lion, Rising Sun; Hedgerley : White Horse; Henton : Peacock; High Wycombe : Rose & Crown, Wycombe Wines; Ickford : Rising Sun; Kingston Blount : Cherry Tree; Little Marlow : Kings Head; Littleworth Common : Blackwood Arms; Loudwater : General Havelock, Deerhams Inn; Maidenhead : Hand & Flowers; Marlow : Clayton Arms, Hogshead, Prince of Wales, Carpenters Arms, Plough; Postcombe : Feathers; Radnage : Crown; Smokey Row : Swan & Brewer; Stewkley : Swan; Turville : Bull & Butcher; Waddesdon : Lion; West Wycombe : George & Dragon; Wheeler End Common : Chequers; Whitchurch : White Swan, White Horse; Wing : Cock; Wingrave : Rose & Crown; Worlds End : Marquis of Granby; Worminghall : Clifden Arms

Breweries

Rebellion, Luxters, Vale

If your pub would like copies of Swan Supping, please contact the Editor.

Neighbouring CAMRA Branch Contacts

Mid Chilterns	Chris Pontin	01442 380115	Reading & Mid Berkshire	Janet Blurton	0118 9619140
Milton Keynes & N Bucks	Barry Mayles	01908 370036			0118 931 2222
N Oxfordshire	Clive Deacon	0121 742 5420	S Oxfordshire	Graham Hards	01491 835436
Oxford City	Neil Hoggarth	01865 272461	Slough, Windsor & Maidenhead	Vic Powell	01753 735765

If your pub wants copies of Swan Supping or details on advertising, please contact the Editor.

Aylesbury

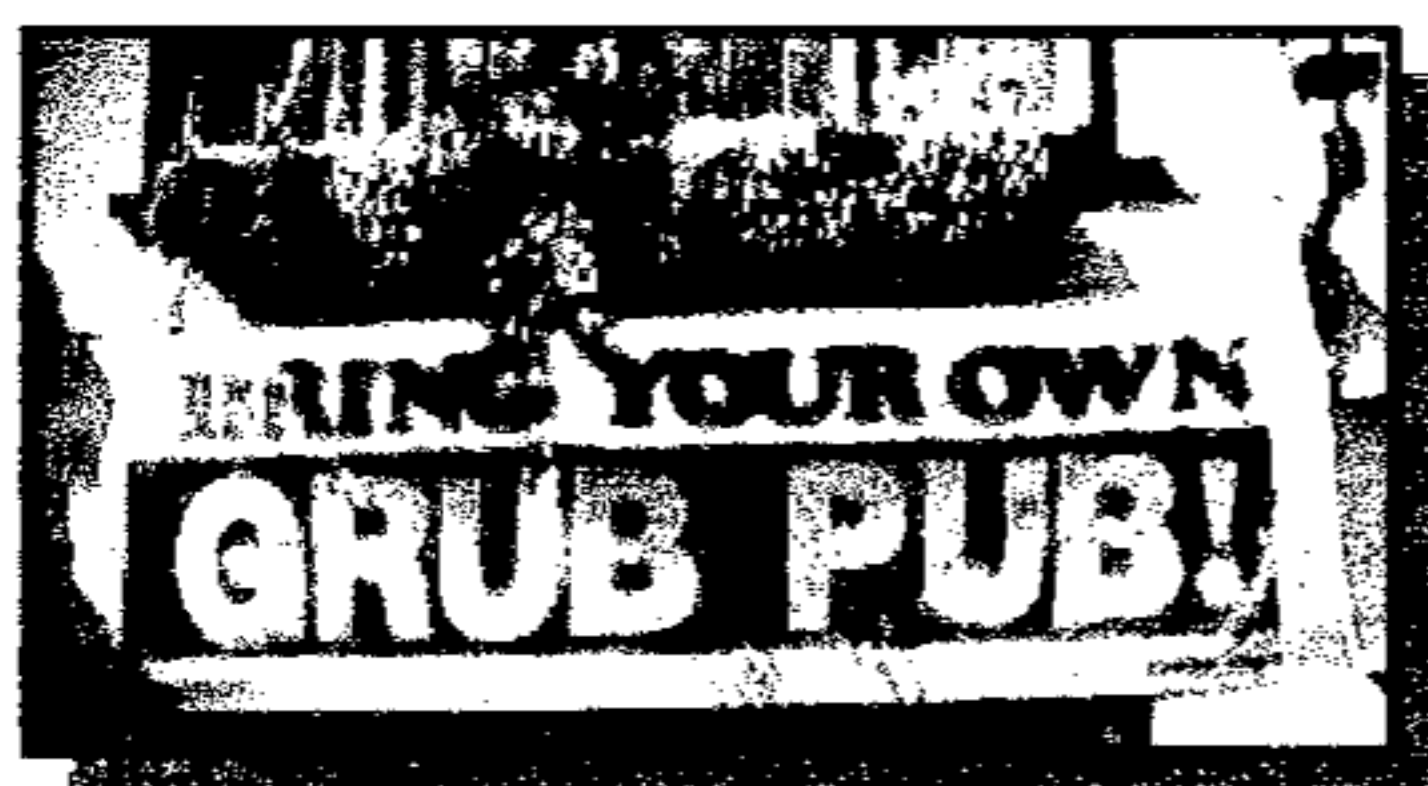
A new Brewers Fayre pub restaurant is due to open on the old Antiference site at the end of October. Three real ales should be on sale from the following Boddingtons, Wadwoth 6X, Flowers, Castle Eden and Marstons Pedigree.

Rumour has it that a *Hogshead* style pub may be on the way to Aylesbury sometime in the next 12 months. All we need is a Wetherspoons and we will have a full set.

The Green Man closed 15 years ago and to commemorate the closure regulars organised a reunion on September 27th at Aston Clinton Sports & Social Club. Guests of honour were to be Bill and Olive Duthie who ran the Market Square pub until its closure and change of name to Butlers.

Regulars past and present have suggested that the Huntsman revert back to its original name of the Princess of Wales following the death of the Princess. The pub has been bought by Avebury Taverns from Wolverhampton & Dudley brewery.

The Grapes has reopened the upper bar as the Wig and Gown Restaurant and are serving a good range of lunchtime meals. The bar is also available free of charge for functions. There are now three beers available - Marston's Bitter and Pedigree as well as the Head Brewer's Choice which varies.



Whatever Next? Bring your own Beer!

The Lounge Nightclub has opened above Burtons at the top of Market Square. As the floor being used was designed as a teetotal snooker hall to lure people away from the evils of drink, the founder of Burtons must be turning in his grave!!

Guest ales on sale at the Queen's Head up to December are Everards Tiger, Ushers Founders Ale and Batemans XXXB. There will be no guest beer on offer over the festive season.

Trading Standards

Bucks Trading Standards Department have warned that Cola drinks on sale in many of the pubs in the county may contain 20-40% more water than they should. This is normally due to technical problems.

Chearsley

The Bell has won two sections in the Fullers Brewery garden competition. The awards were for the best family garden and the best front of house.

Marlow

The Crown is still closed although it is believed that an application has been received for the licence from a local landlord.

High Wycombe

The Hogshead in Wycombe is now open. It's on the Oxford Road (A40) near where the Exchange used to be in a building formerly a furniture shop. It's a large pub on 2 stories and is very tastefully furnished. The landlord seems keen and is hoping to push good quality beer and cider. The catch is that the majority of the clientele is made up of youngsters content with knocking back lager beer and the odd alcopop (preferably from a bottle). The landlord has said that he may have to reduce the range of cider if it turns out to be slow selling. I reckon he may have to do the same with the beer range too. Support this pub. We are not likely to see as impressive a beer/cider range again outside of a beer festival.

World's End

The Marquis of Granby is a finalist in the Family Pub of the Year category in the Vanguard Lease Company's awards for excellence being held for the first time. The regional and national award winners will be announced in October. An overall winner will be chosen from the 48 finalists in 8 categories.

Hardwick

The Bell has been renamed The Old Jug.

Banbury

A new brewery is now up and running in Banbury. The aptly named **Banbury Micro Brewery** is run by the also aptly named mortician, Simon Dyer. The first beer from the brewery is Cross Bitter (approx. 3.7%) and it is hoped to be available in 3 to 4 pubs in the area.

Wendover

Guest ales on sale at the King & Queen up to the end of the year include the following: Greene King Black Baron, Youngs Dirty Dicks, Alloa Tattie Howler, Allsops Gamekeeper, Batemans XXXB and Allsops Winterfold.

(Continued from page 1)

estate without limit.

CARLSBERG-TETLEY

Head of Campaigns at CAMRA, Mike Benner, said 'Allied Domecq has about 1800 pubs which are eligible to take a guest beer under the Orders. If they get their way, this will lead to less choice for drinkers and less opportunities for Britain's 300 small brewers'. The company owns over 50 Firkin brew pubs which supply about another hundred. They already produce well over 50,000 barrels a year, about the same as a

MORRELLS BREWERY

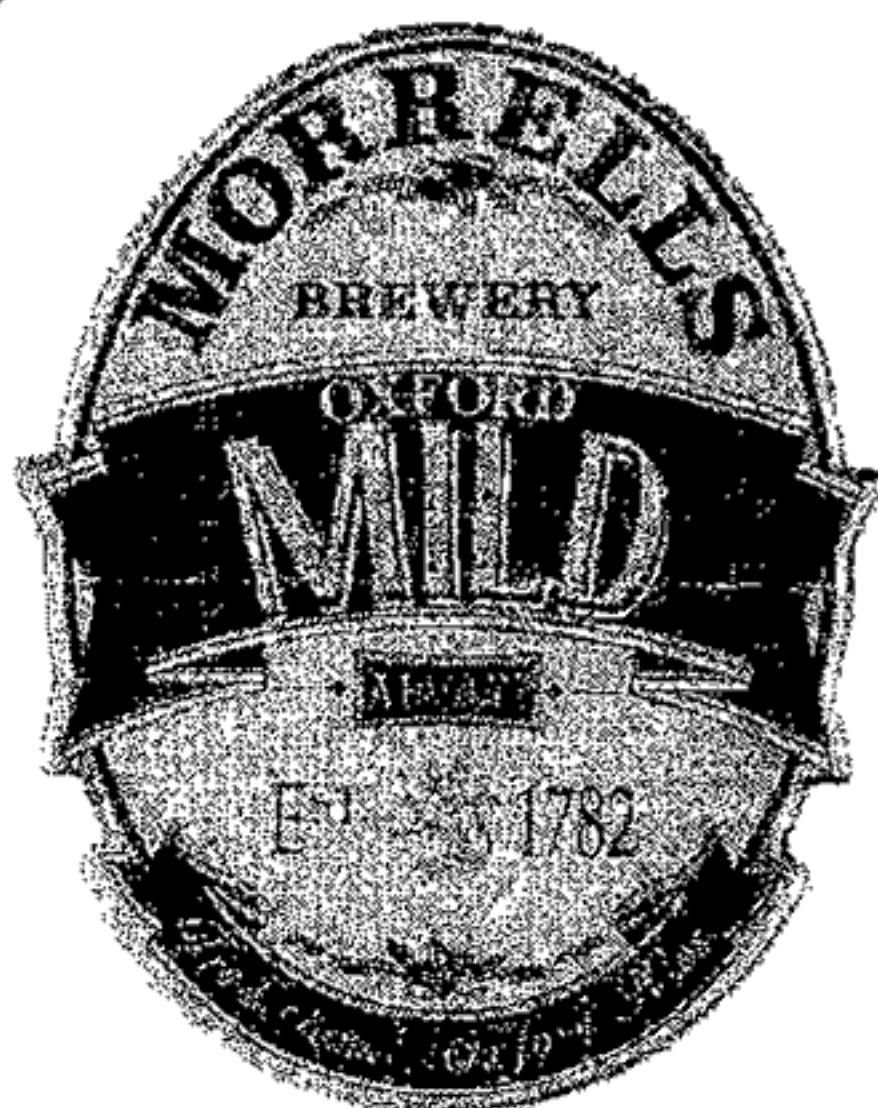
Presents Oxford's
Finest



OXFORD BITTER

(ALC. 3.7% VOL.)

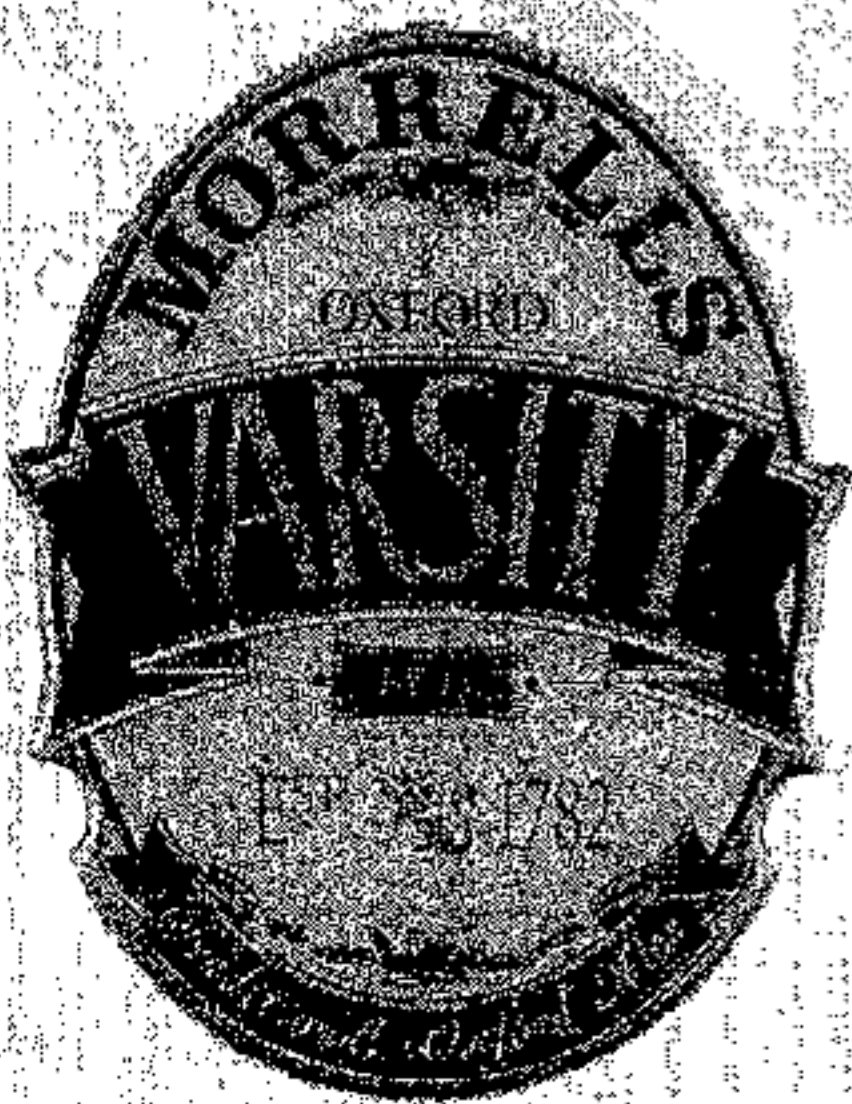
This beer has for some time been our greatest volume seller. Golden brown in colour with a dominant malty odour and fruity overtones.



OXFORD MILD

(ALC. 3.7% VOL.)

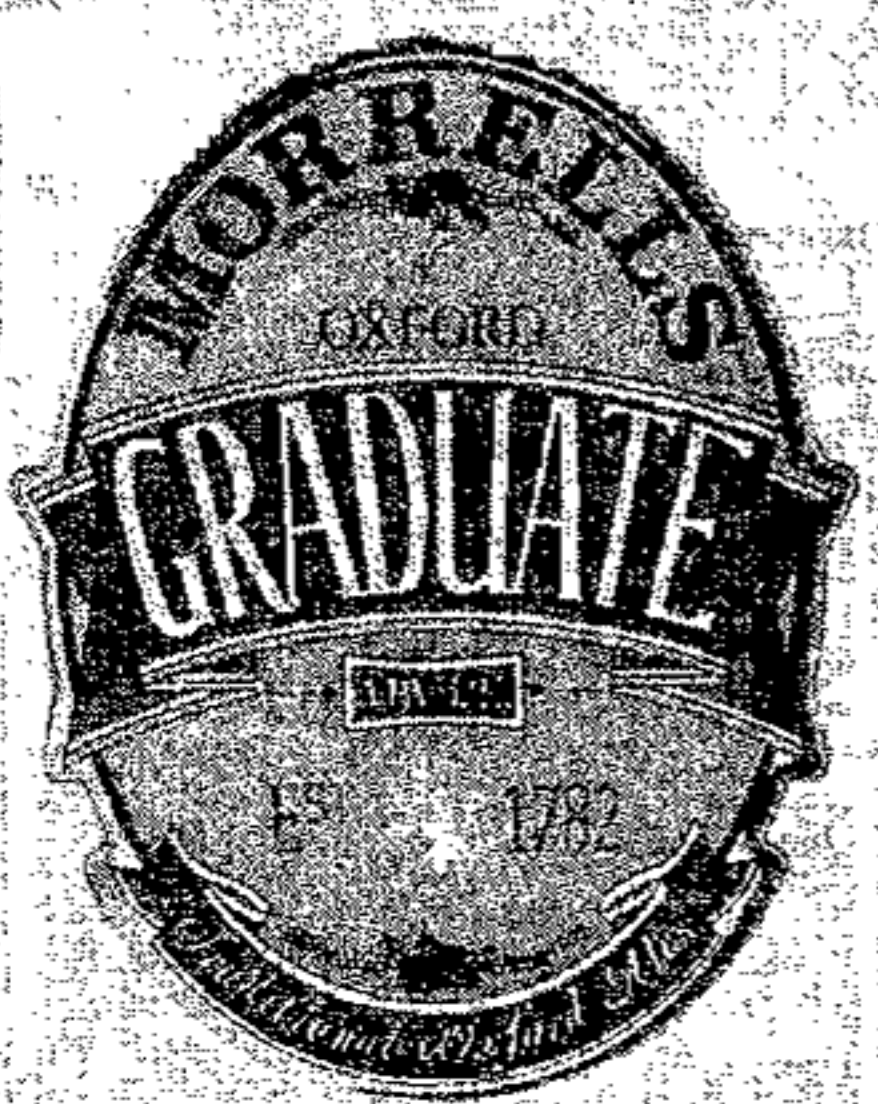
A ruby brown mild with a smokey but dominantly sweet aroma leading to a nutty, roast malt flavour and hoppy finish.



Varsity

(ALC. 4.3% VOL.)

The flagship premium bitter which is enjoying tremendous sales growth. A full bodied pint with a malty taste and characteristic hoppy aroma.



GRADUATE

(ALC. 5.2% VOL.)

An intense malt aroma complemented by a full bodied, well balanced, nutty taste. Soft and warming in the mouth leading to a pleasant bitter finish.

Independent family brewers for over 200 years

HOGSHEAD

THE OLD BREWERY
MARLOW

UP TO 17 CASK ALES AVAILABLE
PLUS CASK CIDERS



SINGLE BREWER FESTIVALS



ABROAD COOPER - 6X -
BODDINGTONSGOOD ALE
GOOD ATMOSPHERE



COLIN AND BRENDA WHILEY
01628 478737





Local Brewery News



Vale Brewery, Haddenham

After many years working for larger national and regional breweries, brothers Mark and Phillip Stevens combined their experience and built a purpose built Real Ale brewery in Haddenham. This revived brewing in the village after the last brewery closed at the end of World War Two.

Vale Brewery began brewing in January 1995 by using traditional methods with only the finest malted barley and whole cone hops. The beers have a strong local following and have quickly gained a reputation for high quality and consistency.

Having won Champion Beer awards at the local CAMRA festivals in Oxford and Dunstable, Edgar's Golden Ale received national recognition at this year's Great British Beer Festival in reaching the last seven to become a 'finalist' for Champion Beer of Britain.

The past few years have seen a steady growth with the beers being available further afield throughout the country. in the high profile J.D. Wetherspoon chain, among others, in recent months.

The brewery offers three 'stock' beers along with a range of seasonal brews.

TASTING NOTES

Notley Ale 3.3% ABV. An excellent session ale with the body and taste of a stronger beer. Heavily hopped with traditional English varieties makes this a very bitter ale with a lovely finish on the back.

Wychert Ale 3.9%. A Best Bitter by anybody's standard. This inaugural brew is a full bodied full flavoured beer with nutty/fruit undertones and a Moreish smack that's guaranteed to make you want another.

Edgar's Golden Ale 4.3%. A pale refreshing full bodied golden ale. The classic hops of Fuggles and Goldings combine with complex malt flavours producing a beer of enormous character to satisfy the most discerning drinker

Hadda's Seasonal Beers

Spring Gold 5.0% (March-May), **Summer Glory** 4.0% (Jun-Sep), **Autumn Ale** 4.5% (Sep-Nov), **Good King Senseless** 5.5% (Dec-Jan).



The new Autumn Ale is copper coloured and produced using a mixture of Goldings and Mount Hood hops from Britain and America.

The brewery is carrying out bottling trials and are hoping to have the new Christmas ale available in cask and bottled form this Christmas.



Old Luxters Farm Brewery

The Dark Roast Ale (5%) brewed for the Reading Beer Festival proved to be popular and will continue in bottled-conditioned form in November.

Barn Ale has been renamed **Barn Ale Special** and a second brew **Barn Ale Bitter** has been added.

Barn Ale Special 4.5% (also bottled 5.4%).

Barn Ale Bitter (4%)



Rebellion Beer

Company, Marlow

Red Oktober is the Autumn seasonal beer from Marlow brewers Rebellion following on from **Blonde Bombshell**.

IPA 3.7%. **Smuggler** 4.1%.

Mutiny 4.8%.

Red Oktober (Autumn) 4.8%.

The Black Horse, Lacey Green

Gibbs Mew Real Ales
Wiltshire Traditional Bitter
Salisbury Best Bitter

Food

12 -2pm

Mon - Sat

7pm-9pm

(not Thu/Sun)

Sunday Lunch

12-2.30pm

Two Course £4.95

Booking preferred

Beer Garden

Ample Parking

Open Fire

A good old fashioned friendly local.

Tel 01844 345195

Ian Brown Welcomes You to

The Queen's Head

The Village Pub In The Heart of Aylesbury



Bar Snacks & Full Meals Menu
available Lunchtimes & Evenings
Disco last Friday of Every Month
Company Quiz Nights League Sept - April
Regular Food Theme Evenings
Private Parties Catered for
Bed & Breakfast Accomodation
Real Ales and the Largest selection of Malt Whiskies in the Area

Temple Square, Aylesbury, Bucks. HP20 2QA

Tel: 01296 415484



Swanning About in Wendover

The guide to pubs in the Aylesbury Vale and Wycombe area



It's Friday night and the first leg of our expedition around the pubs of Wendover. The first port of call is the **Shoulder of Mutton** just outside the railway station. This early 17th century former hotel is now a 'Henry's Table Pub Restaurant'. It has a large restaurant and garden. Beers on sale were *Greenalls Original* (£1.70), *John Smiths* (£1.65), *Flowers Original* and *Old Speckled Hen*.



Down the hill and turn right at the roundabout and you find the **King & Queen**, part of the

Pubmaster chain. The car park is shared with the adjacent garage. This 16th century pub has a garden to the rear, a basic bar and an inglenook lounge. Two beers are on offer, *Tetley's Bitter* (£1.80) and a choice from the Tapsters choice range (£1.90). See page 3 for details.



Back towards the centre of the town and further down the hill on the right is the **Red Lion Hotel**. This 16th century coaching inn is leased from the lord of the manor and was extensively renovated in 1994 to provide a new bar area. As

well as large jugs of Pimms at



£6.40 you can sample *Young's Special*, *Brakspears Bitter* (£1.65), *Courage Directors* or *Red Lion* at £1.60. *Red Lion* is more commonly known as *Hancock's HB*.

Wendover's oldest pub is situated near the clock tower and roundabout. The **George**



is the **Pack Horse**, a lively street corner pub with inglenook at one end of a central bar. This was a former ABC pub and it now sells *Morlands Independent IPA* (£1.50), *Original* (£1.60) and *Charles Wells Bombardier* (1.76).

Further on towards the RAF camp is the **Rose and Crown** selling *Tetleys* (£1.63) and *Old Speckled Hen*. In 1995 it was refurbished as a 'Mr Q's' style pub with three pool tables and large screen TV.

Over a mile South of the centre of the town is **The Office**, an early 18th century coaching house formerly a Charles Wells pub known as the **Halfway House**. It reopened as a freehouse in 1994 after nearly two years closure.

Information

is another 16th century pub with low beams. There is a large pool area and racing car machine. Watch out for wash day and the vibrating ceiling. Beers on offer were *Tetley* (£1.81) or *Old Speckled Hen* (£1.95).

The final port of call on the first trip was the **White Swan**. *Morlands Original*, *IPA* and *independents* as well as *Vaux Samson* were to be found. The pub was formerly the *Swan & Brewers* having been formed from two pubs. The 'Brewers' part is now an Italian restaurant.



The tour continued on Tuesday afternoon. On the road towards Halton, the first pub on the left

Wendover is a delightful small town nestling below the highest edge of the Chilterns. It was once represented in parliament by John Hampden and Edmund Burke. Although it is now surrounded by residential estates, it retains its old charm. The brick clock tower looks somewhat out of place, but to the West and South are attractive groups of buildings. In Pound Street (above the High Street) is a long row of timber-framed cottages.

Before visiting any of the pubs listed, check the opening hours

Shoulder of Mutton

☎ 01296 623223

King & Queen

☎ 01296 623272

Red Lion Hotel

☎ 01296 622266

George

☎ 01296 625089

White Swan

☎ 01296 622257

PackHorse

☎ 01296 622075

Rose & Crown

☎ 01296 623235

Office

☎ 01296 624878



Formerly
North & Randall
established 1851



Still the original
family firm

THE GREAT DAYLA ALE TRAIL

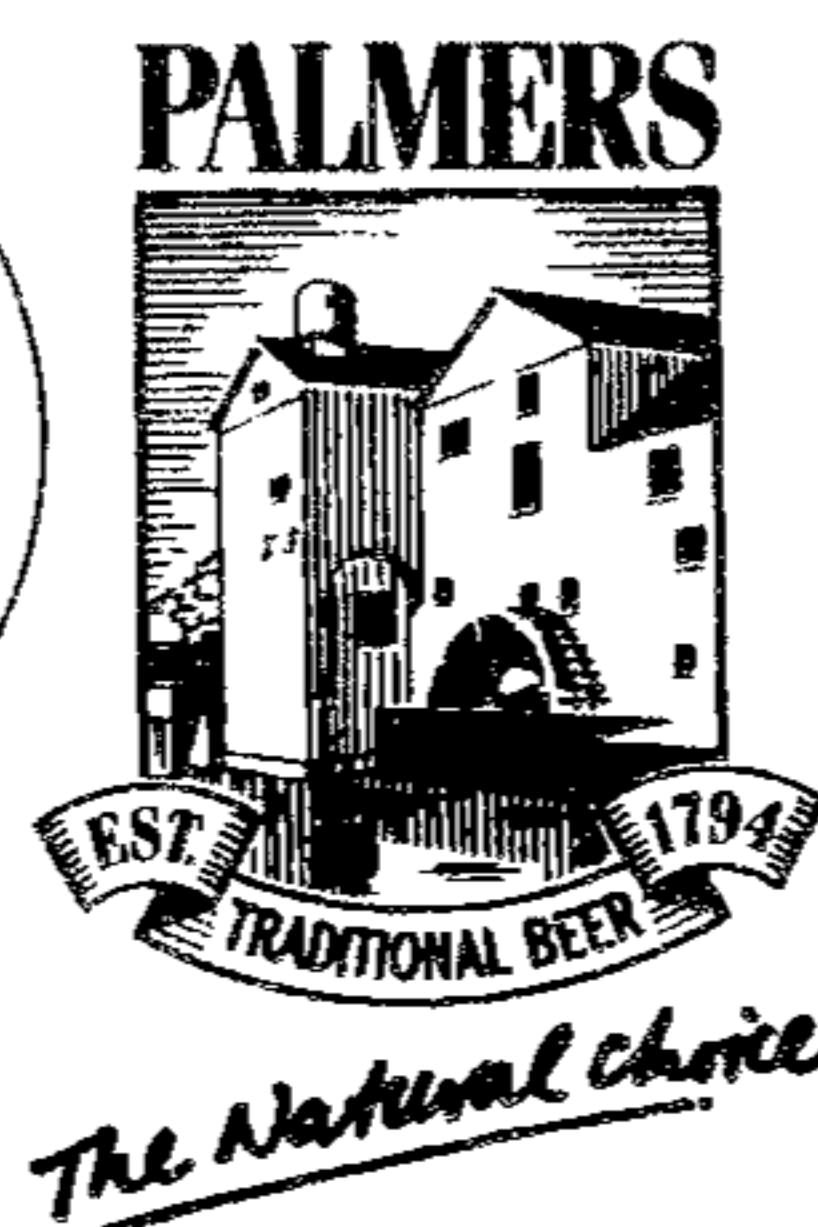
DAYLA is privileged to be associated with many of the country's leading Regional Brewers as their appointed agents supplying their ales to the same high quality standards upon which they have built their own strong reputations.

DAYLA's association with Brewing is much longer than most would ever have imagined. Joseph Holland Senior, great Grandfather of today's Managing Director ran two Ale Houses, a Coaching Inn and a Brewery in the village of Wendover at the foot of the Chiltern Hills.

Having bought the Brewery from his father, Joseph the Younger continued brewing until the First World War after which he joined North & Randall Ltd Mineral Water Manufacturers of Aylesbury.

DAYLA is still very much the FAMILY business with the 3rd generation of the family at the helm.

DAYLA OF AYLESBURY, 80-100 High Street, Aylesbury, Bucks HP20 1QZ
Tel: 01296 20261 Fax: 01296 397012





London Pub Crawl

Friday 21st November



All directions start and end at Marylebone Station (public transport is definitely advised!!), but we must apologise for the lack of a map (the only artists in the branch can't draw!!) so a trusty A-Z may be useful. Join us at any point along the crawl. Members and non-members welcome.

Turn right out of the station, right again then left down Hayes Place and past the famous Sea Shell fish restaurant.

1. Perseverance, 11 Shroton Street (6 pm) *Fullers London Pride, Draught Bass* A handy watering hole when waiting for a train, although they don't do Mild anymore!

Straight out of the pub, down Cosway St., across Marylebone Road then second left off Old Marylebone Rd.

2. Beehive, 7 Homer Street (6.30 pm) *Boddingtons Bitter, Fullers London Pride, Marston's Pedigree* Small and popular side-street bar with floral window box display and large display of photos of old Marylebone.

Right out of the pub, then left into Crawford Place and walk about 100yds.

3. Windsor Castle, 29 Crawford Place (7 pm) *Adnams Bitter, Draught Bass* Pub with a large collection of royal memorabilia.

A quick walk across the road into Brendon Street.

4. Wargrave Arms, 42 Brendon Street (7.30 pm) *Young's Bitter, Special, Ram Rod, Winter Warmer Long*, narrow, corner local, former Finch's pub.

Back into Crawford Place, then carry straight on into Crawford Street.

5. Turner's Arms, 26 Crawford Street (8 pm) *Shepherd Neame Master Brew, Spitfire* Small pub, recently given a much needed refurbishment.

Carry further along Crawford Street, then right into Baker Street, then next left into Dorset Street.

6. Barley Mow, 8 Dorset Street (8.30 pm) *Brakspear Bitter, Tetley Bitter, Wadworth 6X, Adnams Broadside, Guest Beer* Dating from 1791/2, it retains most of its woodwork from

the last century, along with two small private cubicles which were used for pawnbroking deals. There is a second bar hidden away at the back of the pub.

Back into Baker Street, then walk North, over Marylebone Road, left into Melcombe Street, right into Gloucester Place, left into Taunton Mews then right into Linhope Street.

7. Feathers, Linhope Street (9 pm) *Wethereds Bitter, Flowers Original* Smallest pub in North London with a loyal local following.

If the above pub is full, or you are still thirsty on the way back to the station, go back to Taunton Mews and turn right.

8. Hobgoblin, Balcombe Street *Courage Best, Directors, One of the Wychwood Beers* Pub leased from Courage, so the Wychwood beer is technically only a guest beer!

Turn left into Balcombe Street, right into Melcombe Street and Marylebone Station is a 100 yards on the right.



The Carpenters Arms, Marlow



Home Made Sandwiches available
Pub Games
Real Fire, Patio

15 Spittal Street, Marlow, Bucks
Telephone : 01628 473649



MORRELLS

*Oxfords Finest Beers
Morrells Varsity & Bitter*

The Cherry Tree

Kingston Blount Tel: 01844 352273

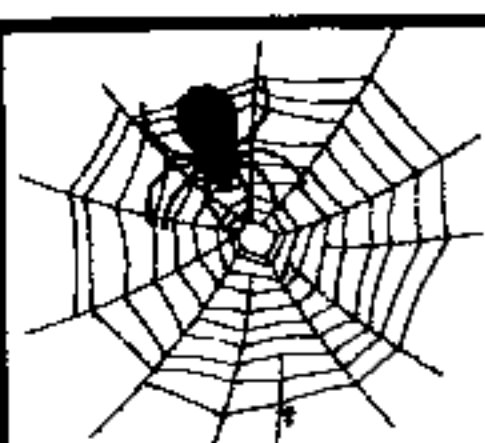


*Our friendly intimate country
restaurant now open.
Ideal for celebrations and gatherings
Christmas Bookings now taken*

*Graham and Caroline Welcome
Customers Old & New*

*Home Cooked Food & Fine Ales.
Recently Refurbished.*

Cellar & Bar Management Courses by arrangement



INTERNET

Unfortunately, just after the last issue went to press, we discovered that Michael Jackson's *Beerhunter* site was not to be updated in future by its owners *Discovery Channel*. The archived site can still be found at the address given.

CAMRA produces a range of merchandising and books. An on-line catalogue is available at the CAMRA web site with full details of members prices and how to order.

The pub trade newspaper, *The Licensee* has recently started a weekly news service on the net. The site also includes competitions, classified ads and a pub search feature.

As usual, the links to sites mentioned can be found at the branch web site which also includes a full beer list for the Aylesbury Beer Festival together with all branch meeting information, up to date local news, and the on-line version of *Swan Supping*.

Aylesbury Vale & Wycombe Branch

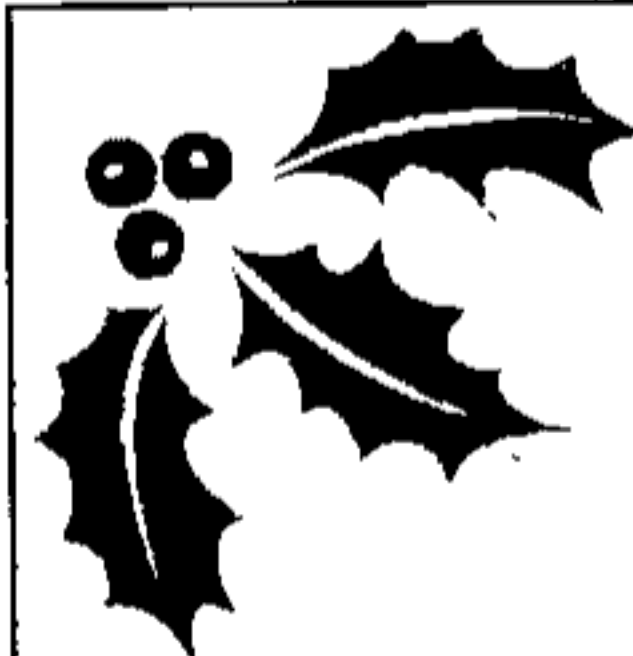
http://homepages.bucks.net/~bryan_spink/

CAMRA Catalogue

<http://camra.org.uk/catalog.html>

The Licensee

<http://www.licensee.co.uk/>



A **CAMRA** book makes an ideal Christmas Present.

For details phone
01727 867201



APPLE Cider and Perry

Gloucestershire Perry producer is top of the tree

Summers Perry, made by Rodney Summers of Halmore, Berkeley, Gloucestershire, has won the Campaign For Real Ale's coveted Cider and Perry of the Year award at a blind tasting at CAMRA's Great British Beer Festival. The judges highly praised the perry, saying that they found it 'well balanced, easily drinkable and typical of the fruit.'

CAMRA spokesman Colin Cubie said: 'As well as our involvement with real ale, CAMRA is committed to promoting traditional cider and perry.'

Rodney Summers keeps his fruit trees organically. CAMRA is keen to encourage the preservation of perry pear trees around the country. and Rodney Summers echoed this. 'The old trees should be treated as listed buildings,' he said

Firkin Ban

Allied Domecq has been warned that the entire Firkin chain could be excluded from the Good Beer Guide due to its policy of replacing Westons cider with Addlestons served under CO2 pressure.

Pub Find

The Red Lion at Stoke Talmage in East Oxfordshire is a wonderful, unspoilt pub selling real cider. It's like stepping back in time with even a bit of the atmosphere of a Dennis Winkworth pub. The Red Lion has only recently started selling lager, and that was under the landlord's protest. The cider is sold by gravity dispense. The two on sale were a Westons and an Inches. The biggest problem is that it's such a long way away and devoid of public transport. connections.

Letters

Send your letters to the editorial address on page 2.

Swan Supping received a letter from Mr R Bailey who pointed out that one of the pubs in our area is not displaying a clearly visible price list and, since this is against the law, he will be making a complaint to Trading Standards. Apparently prices could only be seen on the electronic till, in other words after you have ordered your drink.

Landlords, you have been warned!



From Elvis Evans, Wycombe Marsh

I am a home brewer and am in the Craft Brewing Association. As suggested by the CBA, I think it would be a good idea for the home brewers in our area to get together. I have tried to forge such links in the past but with no success. Now that we have *Swan Supping* I will have one more attempt. If there are any home brewers out there reading this could they please contact me (via *Swan Supping*) and maybe we can eventually get to meet each other. I know that there are many local wine circles that also take an interest in beer as a side-line but what I want is a much less formal contact with the emphasis firmly on beer. I don't think that beer can ever thrive as an adjunct to wine. The other way round would make a little more sense as beer is clearly the more popular product. What I envisage is a (say) monthly get together to drink some beer, swap a few recipes, drink some more beer and discuss any problems we might have. My biggest brewing problem is that I find it difficult to get to Farnborough as often as I need to.



REAL ALE IN BUCKS



Available by mail at £4.95 inc. postage & packing from :-
John Wood
10 Warneford Avenue, Halton,
Aylesbury, Bucks
HP23 5QD

Please make cheques payable to 'CAMRA BUCKS GUIDE'

CAMRA 'Local Guide of the Year' Award Winner



**PORTFOLIO OF OVER 500
HANDPAINTED IN OILS**



THE OUTLOOK IS MILD!



The chances are you won't have seen a pint of mild in your local. Nationally, it accounts for around 3% of the beer market and sales are falling, even in its traditional markets of East Anglia, the North West and the Midlands. It has an unfashionable image, which is a pity because many of the milds available are truly excellent beers. Mild is one of Britain's oldest continuing beer styles. Until the 15th/16th centuries ale was the major British brew and it was made without hops. These were only introduced from the Low Countries after that time. Mild is the nearest descendant to those early brews.

So what is mild? Put simply it's a beer that's less hoppy than a bitter. Milds are not bland and boring though, far from it. The darkness of most milds comes from the use of darker malts or roasted barley which are used to compensate for the loss of hop character. 'Nutty', 'chocolatey' and 'fruity' tastes are all to be found in the complexity of milds. Not all milds are dark however. Bank's Ale is the biggest selling brand and is a light version. Its name was changed from Bank's Mild to try to give it a more modern image. Light milds are traditional in Scotland where they are known as 60/- ales and in the West Country as Boy's Bitter. Hertfordshire brewed McMullens AK is an example of a light mild.

Today milds are normally weaker than bitters at around 3.2%, but this hasn't always been the case. In the latter part of the last century, milds were brewed to about the same strength as bitters as a response to the demand for a sweeter beer from the working classes. It was as a result of pressures from temperance movements that brewers reduced the gravity. During the First World War, as a result of malt rationing, the strength was kept low. Following the Second World War, as prosperity returned, mild's popularity as a cheap ale began to fade. By the mid 1970's the lager boom reduced mild's share of the market

to only 13%. At this time the big brewers were very heavily promoting their over priced keg beers at the expense of cheap and cheerful milds. Unscrupulous landlords shouldered some of the blame for the decline in popularity with their unfortunate habit of tipping the contents of drip trays back into mild casks.

So what's the future for mild? All is not lost. The 1990s have seen the beer style make something of a small comeback. Not necessarily as a drink of the masses. Beer enthusiasts in the consumer, retail and production fields have all helped to make this happen. Many smaller micros and local brewers still brew short runs of high quality mild. The Firkin chain, for example, produced a mild as one of its seasonal beers this year. Mild festivals and mild as an occasional guest beer can work in pubs. Strong milds have made a comeback. Coach House in Warrington produces Gunpowder Mild at 3.8% and High Gravity Mild at 4.2%. The Beacon Hotel home of the Sarah Hughes Brewery in Sedgley, West Midlands is a regular stop on the branch Black Country trip. They produce the excellent Dark Ruby Mild at 6% brewed to an original Victorian recipe.

The **Campaign for Real Ale** has long promoted the virtues of mild. The proliferation of free houses and caring landlords has provided the medium for the small independent brewers to brew new milds. This has spurred the larger independents and even some nationals to brew new milds or at least appreciate what they already brew.

As the weather forecast would have it - The outlook is Mild!

Known Local Mild Outlets.

If you know of any others, let us know.

Bull & Butcher, Turville, Prince Albert, Frieth,
Bottle & Glass, Gibraltar

The Friends of Florence Nightingale House (with the co-operation of CAMRA) **4th Vale of Aylesbury Beer Festival**



Friday 24th and Saturday 25th October 1997
The Ranch House
Lower Road,
Stoke Mandeville

**ADMISSION BY PROGRAM £1.50 IN ADVANCE
(£2.50 ON THE DOOR)**

ADMISSION INCLUDES ONE PINT OF REAL ALE

TICKETS AVAILABLE FROM THE FRIENDS OF FLORENCE
NIGHTINGALE HOUSE,
6 MANOR CLOSE, MANOR HOUSE, BIERTON ROAD
AYLESBURY

Tel: 01296 29975 for details.

Registered Charity No 802733



Brewers of Award Winning Ale

Calling all beer lovers. Vale Brewery offer Award Winning Traditional Ales, made from only the finest malted barley and whole English hops, in ready to drink polypins and party packs.

To order, telephone 01844 290008 giving a minimum 24 hours notice.

Price List (Inc. VAT)

Bright beer unless otherwise requested

<u>BEER</u>	<u>ABV</u>	<u>FIRKIN</u>	<u>POLYPIN</u>	<u>POLYBOX</u>
Notley Ale	3.3%	£68.00	£37.00	£18.00
Wychert Ale	3.9%	£70.00	£40.00	£20.00
Edgar's Golden	4.3%	£72.00	£42.00	£21.00

Hadda's Seasonal Ales are available throughout the year.

Aylesbury Vale Village Pub Competition

The judging panel met on 16th September to prepare a shortlist of twelve pubs from the many entered into the competition to find the best village pub in Aylesbury Vale. The competition is being held to commemorate the memory of local councillor Ted Payne.

The 12 shortlisted pubs will feature in a guide to be available in libraries and tourist information centres across the vale. Each will receive a wall plaque from sponsors *Mix 96*. The winner will get a trophy to be kept for a year, a wall plaque and one month's free advertising in the *Mix 96* pub guide.

Criteria considered in the selection of the pubs included quality of beer, friendliness of staff, food, community services and activities, family facilities and general appearance and character.

The 12 finalists were:

Harrow, Bishopstone
Bell Inn, Chearsley
Seven Stars, Dinton
Cuckoo's Nest, Gawcott
Shoulder of Mutton, Little Horwood
Eight Bells, Long Crendon
Wheatsheaf, Maids Moreton
White Lion, Marsworth
Black Boy, Oving
Bell, Waddesdon
Cock, Wing
Rose and Crown, Wingrave.



Membership News

Three Great Offers from CAMRA

If you sign up as a new CAMRA member from now until the end of the year and pay by Direct Debit, then you will receive **FOUR FREE MONTHS** membership with no strings attached. Special application forms will be available in selected pubs, at the Vale of Aylesbury Beer Festival or from the Editor.

If you want to pay by Credit/Debit Card or by cheque, you will get a discount of £2 on your first years membership. In other words your membership will be only £12 instead of £14. You can use the form on page 12 for cheque payments. For credit/debit card payments you can phone CAMRA HQ on 01727 867201.

If you do decide to join then you are able to obtain discounts on CAMRA books including the new 1998 GOOD BEER GUIDE. The cover price is £10.99 but the members price is only £7.50 and if you attend a branch social in October or November you can get the guide for only £7! (See page 12)

As a member you will also receive the following benefits

- a lively monthly newspaper *Whats Brewing* packed with information about beer and pubs
- advance notice of our 145 beer festivals every year
- brewery visits, beer tastings, pub socials
- pre-publication offers on all our books

CAMRA is the 'most succesful consumer organisation in Europe'. Why not join us now!

WIN TICKETS TO THE VALE OF AYLESBURY BEER FESTIVAL

We have five pairs of tickets for this year's Vale of Aylesbury Beer Festival (Details page 1). To enter simply uanswer the three questions below (the answers are all in this issue) and send your entries to *Swan Supping Competition, 15 Bedwyn Walk, Aylesbury, Bucks HP21 8EQ* to arrive before Tuesday 21st October. The first five all correct entries will receive a pair of tickets for entry to either day of the festival.

QUESTIONS

- 1 Which Scottish brewery is threatened with closure by Carlsberg-Tetley?
- 2 What is the name of Vale Brewery's Christmas beer?
- 3 Which beer was voted Champion Beer of Britain at this year's Great British Beer Festival?



THE
Family Welcome

The Charter

A Brewers Fayre

Family Pub & Dining Room

Opening Late October

Bicester Road, Aylesbury

Serving a range of premium cask ales from :
Boddingtons, Flowers Original, Flowers IPA, Wadworth 6X,
Morlands Old Speckled Hen, Fullers London Pride,
Brakspears and Guest Special Brews.

Facilities for all the Family
Indoor 'Charlie Chalk' play area
and Outdoor play area.



Diary

An up to date list of all CAMRA run festivals can be found at the CAMRA web site.

NOTE: Festivals marked * are not organised by CAMRA

October

2nd-4th Guernsey

North Legion Hall, L'Islet, Vale
Tel 01481 47460

2nd-4th St. Albans

The Albans Arena
Tel 01727 852258

8th-11th Bedford

Corn Exchange, St Paul's Square
Tel 01234 364796

9th-11th South Devon

Newton Abbot Racecourse
Tel 01803 299617

17th-18th Bath

The Pavilion, North Parade Road
Tel 01225 332956

23rd-26th Nottingham

Victoria Leisure Centre
Tel 0115 9640639

24th-25th Aylesbury *

The Ranch House, Stoke Mandeville
See front page for details

24th-25th Cardiff

Star Centre, Splott Road
Tel 01222 664132

Oct 30th - Nov 1st Middlesbrough

Middlesbrough Town Hall Crypt
Tel 01642 322851

Oct 31st-Nov 1st Overton

Lukes Hall, Overton, Hampshire

November

6th - 8th Aberdeen & North East

McClymont Halls, Holborn Street,
Aberdeen
Tel 01224 480096

6th - 8th (Barnsley) Wombell Warmer

Festival St Michaels & All Angels RC
Community Centre, Park Street,
Wombwell
Tel 01226 714492

7th - 8th 4th Woking Beer Festival

Woking Leisure Centre
Tel 01252 725231

13th - 15th City of York

De Grey Rooms Rooms, Exhibition
Square Tel 01904 626545

14th - 15th 17th Bury Beer Festival

The Met, Market Street
Tel 01204 574790

25th - 29th 18th Rochford Beer Fest

Freight House (next to Rail Station)



**Old Luxters
Brewery**

Traditional
Ales
and Bottle
Conditioning

Tel 01491 638330



Beer Festivals



Great British Beer Festival, Olympia, London. 5th - 9th August

It may have been hot and humid at Olympia but, thanks to the cooling system, the beers were all at the correct temperature at this year's GBBF as the festival is affectionately known. The popular trade session followed the announcements of this year's *Champion Beer of Britain* on Tuesday (See page 10 & 11). Then it was time

to let the masses in. Around 42,000 people were counted through the doors of Olympia and they drank their way through 170,000 pints of Great British beer plus ciders, perries and a vast selection of beers from around the world.

Entertainment on the first night was the popular Chaminade String Quartet and there was plenty to keep the customers entertained throughout the week. On Friday, Steeleye Span started their British tour at the festival, over 11,000 people came through the door and the stocks of Real Ale sausages became dangerously low. Cartoonist Bill Tidy put in an appearance on Thursday to sign copies of his new CAMRA book of collected *Kegbuster* cartoons.

The event was staffed by over 1,000 enthusiastic volunteers, many from overseas and some of them working for the full ten days. There's a lot of work to be done before the doors open on Tuesday and after the last pint is poured on Saturday.

Next year's festival is to be held once again at Olympia from 4th to 8th August. Make a date in your diary and see you there!



Congratulations to the winners of our GBBF competition in Issue 2:
S. Bright, J. Gipson and R. Matthews who each won a pair of tickets.

1st Wingrave Beer Festival 5th-7th September

Twenty Five beers and three ciders were to be found at the first Wingrave Beer Festival, a joint venture between the Rose and Crown and the local Community Association.

CAMRA members could get a discount on admission and all the beers were only £1.50 a pint. Around 120 people came through the doors on Friday night to enjoy beers ranging from *Batemans Mild* to *Kelham Island Pale Rider*.

Saturday was quieter due to the funeral of the Princess of Wales. The organisers have said they will make a donation to one of the charities supported by the Princess. The barbecue in the playground was welcomed by the attendees who drank under the sign of the old Temperance Hall, now demolished. Between sessions there was time to visit the Rose and Crown just round the corner for a few more beers.

A fourth session on Sunday brought the festival to a close and plans were already being made for a similar event next year.

Rising Sun, Haddenham 4th-6th September

Six beers were on offer at the outside bar built for the festival at the Rising Sun in Haddenham in addition to the regular beers and others available inside. The nights were starting to draw in at the beginning of September and so extra lighting would have been useful. Instead the pump clips were inspected with the aid of a torch.

Vale Brewery produced a special brew for the occasion, *Rising Sun Special* at 4% ABV. The other beers outside were *Tom Woods Shepherds Delight*, *Batemans Mellow Yellow*, *Glentworth Dizzie Blonde*, *CoachHouse Honey Pot* and *Daleside Old Legover Countrystyle*.

Friday night was reasonably quiet until around ten o'clock when the pub and the garden started to fill up. Saturday afternoon was Pig Roast Day which went well despite the other events of the day and the evening session saw the pub packed out.

The CAMRA Guide to Real Cider
available from book shops or
CAMRA HQ (01727) 867201 £7.99



**Ron & Rita
Welcome You To**

The Clayton Arms

16 Oxford Road
Marlow

Bucks. SL7 2NL
Tel : 01628 - 478620

Traditional Family Run Pub Offering :-

Home Cooked Lunches & Snacks

Finest Brakspears' Ales

Summertime Patio Area

**Non-Smoking Dining Area
Suitable For Families**

AS SEEN IN THE 'GOOD BEER GUIDE'

Champion Beer of Britain

Workie Ticket from Mordue Brewery in Tyne & Wear was judged to be the best beer in Britain by a panel of brewers, beer writers and journalists at this year's Great British Beer Festival. Ticket, a 4.5% best bitter was chosen as the overall winner from over fifty finalists in eight categories including beers from tiny micros to major national brewers.

CAMRA Head of Campaigns Mike Benner said, 'This is tremendous news for Mordue and proves how beers from small brewers can compete on the national stage.'

It's a wonderfully distinctive beer with all the qualities a national champion should have.'

Winning brewer Matthew Fawson said, 'I'm flabbergasted. We've won local awards before since we opened in 1995, but this is something else. We only have a five barrel plant at the moment, but we're probably going to have to have a re-think after this.'

The Silver award went to Bateman Dark Mild from the Lincolnshire family brewer and the Bronze to Hobsons of Cleobury Mortimer in Shropshire, based in an old sawmill, with their Best Bitter. Mike Benner added, 'It's certainly a day for small brewers - Mordue is probably one of the smallest in Britain'

Category Winners

Mild - Bateman Dark Mild
Bitter - Hobsons Best Bitter
Best Bitter - Mordue Workie Ticket
Strong Beer - Bateman XXXB
Bottle Conditioned Beer -
 Hop Back Summer Lightning
Speciality Beer -
 Harviestoun Schiehallion

Whitby

North Yorkshire brewery Whitby's Own has closed after a nine year battle to win enough distribution failed.

Gibbs Mew

Salisbury based Gibbs Mew have announced that they are to close their city centre Anchor Brewery within the next few months. All brewing will now be contracted out to Ushers of Trowbridge, Wilts.

Wolverhampton & Dudley

W&D have sold 147 of their pubs to Avebury Taverns for £16.4 million. The only pub affected in our area is The Huntsman in Aylesbury (See page 3).

Empire strikes back

Empire Pale Ale from Burtonbridge Brewery was judged to be the best bottle-conditioned beer in Britain by a panel of Guardian readers.

The competition jointly hosted by The Guardian and The Campaign for Real Ale was held at The Great British Beer Festival where six finalists competed for the title.

Roger Protz, Guardian Beer Writer said, 'The beer has a superb hop character, bursting with gorgeous malt and biscuity aromas. The judges thought it especially well-balanced. It's a strong beer at 7.5% abv, but it doesn't drink it's strength'

The Silver award went to Tempus Fugit from Edinburgh brewer Caledonian, a 4.4% abv ale and the Bronze award to Tomlinsons of Pontefract with their Liqueur Stout (6% abv).

Roger Protz added, 'Yet again small brewers have proved themselves in a major beer competition.'

Wetherspoons

Managers are to be allowed to select four guest ales from wholesaler East West Ales and, from October, lined oversized glasses are to be introduced into Wetherspoons pubs.

Brakspears

The Henley-on-Thames brewer has completed a design project to create a plant for short-run brews. This could lead to the production of bottled-conditioned ales.

The new Autumn Ale is the 'amber malted 'Reaper's Reward'.

Special Brews

Courage have brewed a limited edition beer for Beer Month. The 4.1% Woodhams Old Chopper, described as a dark, malty flavoured beer.

A special beer was brewed as part of the C-T Tapsters Choice range to celebrate the Edinburgh Festival. Footlights Ale at 5% was brewed with Targel and Styrian hops.

Marstons latest Head Brewers Choice beer is Spelmonden. Brewed from Kent hops at 4.5% this is said to have a hoppy nose and moreish bitterness.

Red Fox is the Autumn Ale from London brewer Fullers. With a gravity of 4.3% it's made with toasted oats.

Prices Survey

CAMRA's 1997 Prices Survey was the biggest yet with over 90 branches taking part. The average price of a pint of real ale in Britain was found to be £1.64, an increase of 2.5% over the year. This compares favourably with an inflation rate of 2.6% over the same period.

Drinking in pubs owned by independents continues to be the cheapest. The cheapest pint found by the survey was 96p, in the North West, and the most expensive was £2.45, in London.

50p off a pint!

CAMRA has announced that a cut in beer duty to French levels could save drinkers 50p a pint. The average pint of real ale is £1.64. Because of the way pubs set their prices, a tax cut of 25p would mean a cut of over 50p at the bar. In the last budget the chancellor put duty up by 1p a pint which comes into force in January. This will mean an increase of 2p a pint for the drinker.

We pay six times as much duty as the French. The treasury's own economic model has shown that a large cut in beer duty to eliminate cross-border shopping would be self-financing in three years. UK brewers have promised to pass on any cut in duty to the consumer.

Shepherd Neame to challenge Chancellor?

The Kent brewing and pubs group, Shepherd Neame, is planning a legal challenge to the decision by Gordon Brown to raise beer excise duty in July's budget. They are to seek a judicial review claiming that the rise contravenes the Treaty of Rome.

Articles 5 and 99 of the treaty state that member states must harmonise their duties. Sweden and Denmark have already made big reductions. Shepherd Neame have been particularly affected by 'Calais Runs' and have closed 50 pubs as a result of falling sales.

Wychwood

Oxfordshire brewers, Wychwood, are looking for a new name for their *Dog's Bollocks* bottled beer following criticism of the branding and packaging by the Portman Group. The beer has been on sale in supermarkets and off-licences and as soon as stocks of the current label run out, the new label will be rolled out.

Hops For Sale

Carlsberg-Tetley are hoping to sell the Brierly Court hop farm near Leominster to raise £1.8 million. (See also page 1).

Bass

Bass held back stocks off its Draught Bass last month saying it was due to a fall in quality. Stories that it was due to a yeast infection at the brewery were denied. Bass are also rumoured to be in talks to buy Rank which owns the pub chain, Tom Cobleigh.

Opening Times

This year saw the 2nd anniversary of all day opening on Sunday. A CAMRA survey showed that 57% of pubs stay open all day on Sunday with the figures being higher in urban than rural areas.

	All	Urban	Rural
Week	57%	67%	33%
Sat	73%	82%	55%
Sun	57%	62%	49%

Ruddles

The Rutland based Ruddles is back in British hands after Morland, famous for its Old Speckled Hen, bought the brands and brewery from Dutch based Grolsch for £4.8m in September. Ruddles was bought by Grand Met in 1986, became part of Courage in 1991 and was passed on to Grolsch in 1992.

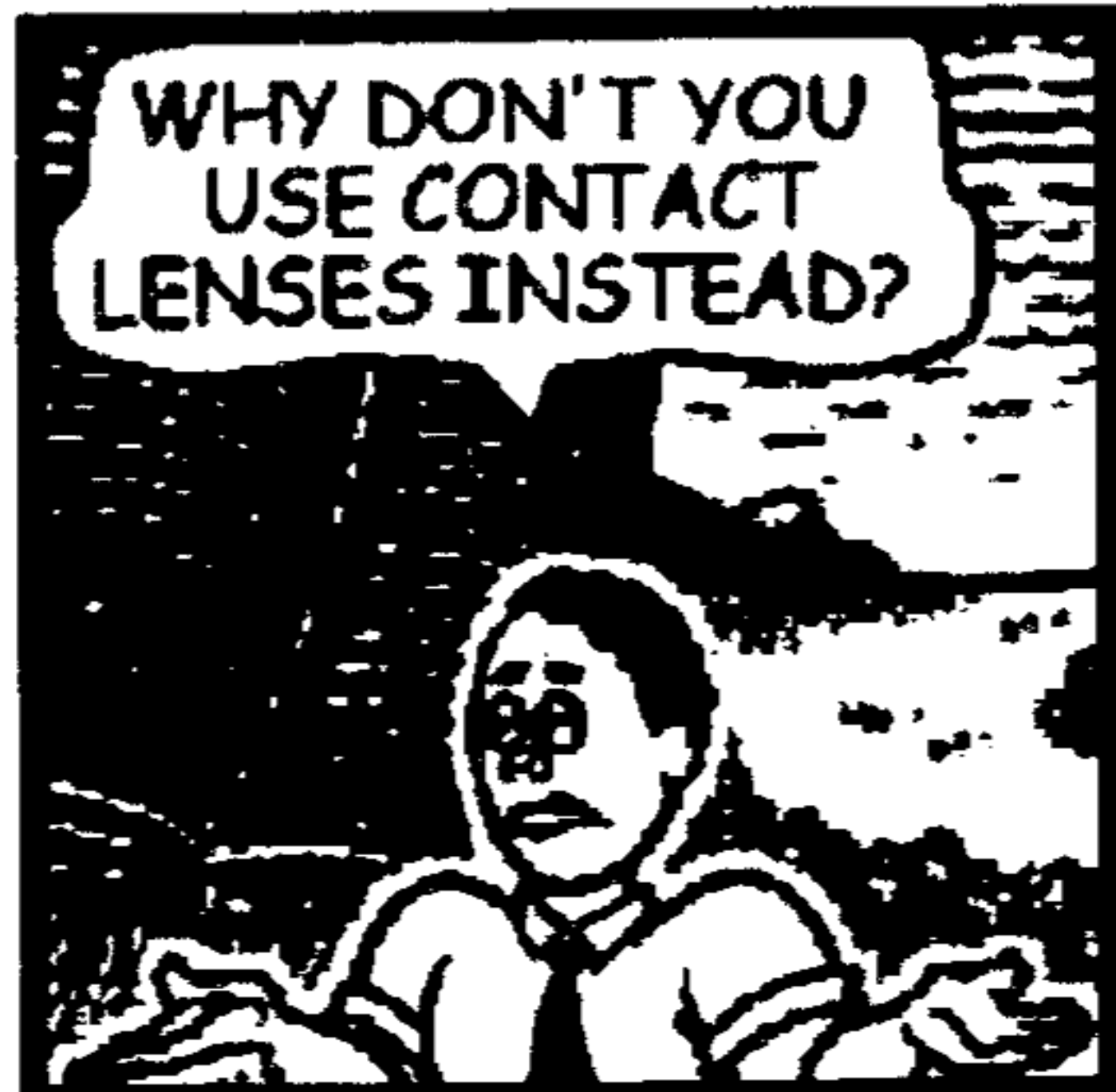
Grand Pub Sale

Inntrepreneur, the pub owning company set up in 1991 as a joint venture between Grand Metropolitan and Fosters Brewing, has been sold to the Japanese investment bank, Nomura for £1.2 billion. The deal also includes Spring Inns. The new vehicle set up for Nomura's pub interests is called The Grand Pub Company.

The acquisition adds 4,300 pubs to Namura's current 1,100 in its Phoenix Inns chain. Spring and Inntrepreneur have a supply contract with Scottish & Newcastle until next year. Phoenix will not be affected by the deal. Nomura expects to float off or securitise its pub interests within two to three years according to reports.

Inntrepreneur has had a chequered past. Their decision to introduce 20-year leases at much higher rents and charging tenants above market rates was slammed by disgruntled licensees. A move is afoot to have the leases declared illegal in Brussels and London.

Following the sale GrandMet can now concentrate on its planned £24 billion merger with Guinness.



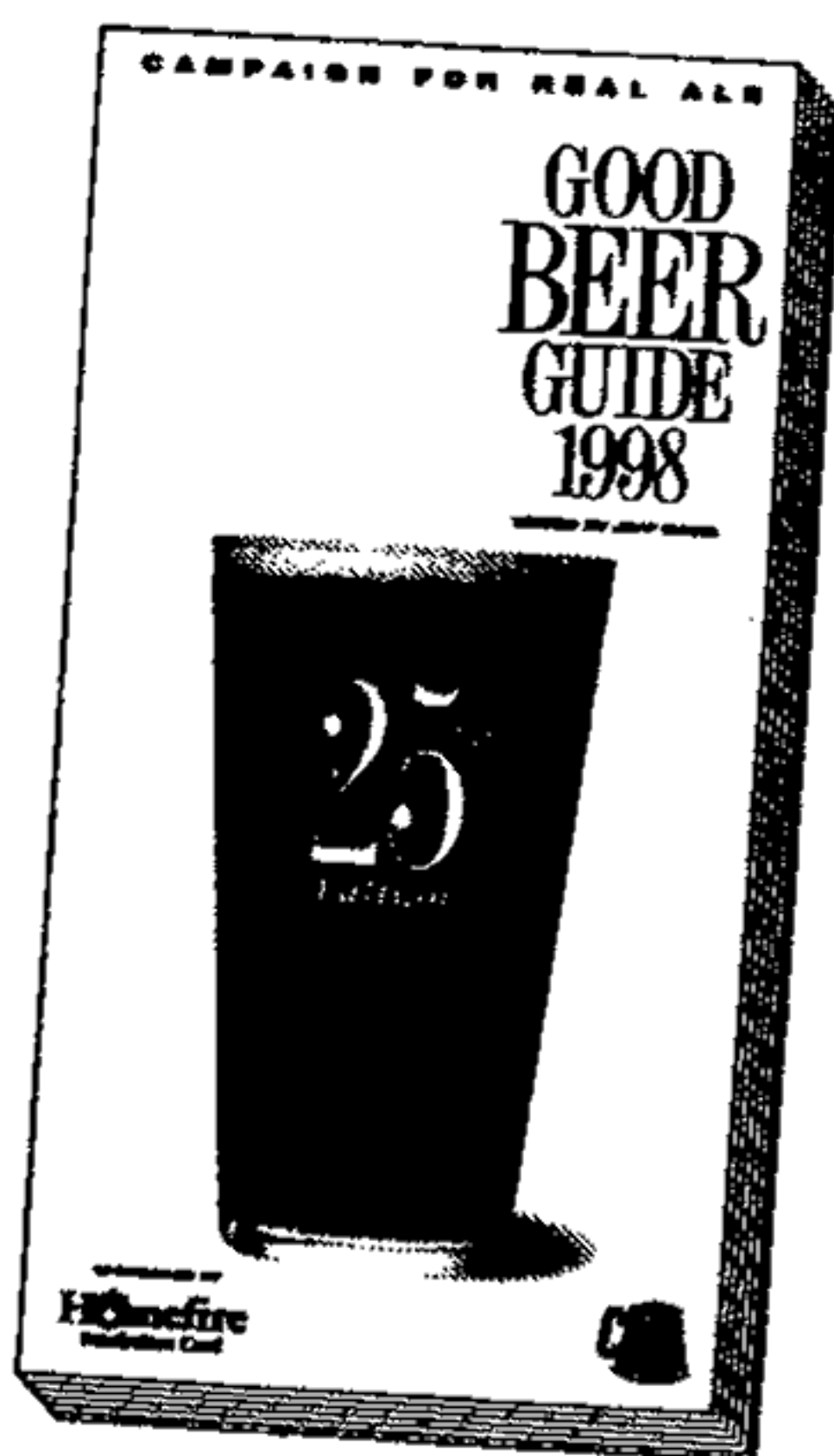
Good Beer Guide 1998

*It's silver and it's the biggest ever!
It's the 25th anniversary edition of CAMRA's
flagship publication, the Good Beer Guide.*

Within its 560 pages you will find:

- Thousands of pubs serving perfect pints of cask beer
- Around a third of the entries have changed in the past year
- 48 new breweries

The cover price is £10.99 and the price to CAMRA members is only £7.50. The guide is published on 16th October and will be available from CAMRA HQ, bookshops or at any of our branch meetings. Members attending any branch event in October or November can obtain a copy at the special rate of only £7. To mark the Silver Anniversary a limited-edition hardback version has been produced. Only 2,000 have been printed and will retail at £15.99 or £10. to members.



JOIN CAMRA TODAY

Just fill in the form below and send your remittance (payable to CAMRA) to
Membership Secretary, CAMRA,
230 Hatfield Road, St Albans, Herts, AL1 4LW

Rates are Single £14, Joint £17 (at same address),
Student/OAP/Unemployed/Disabled £8
Joint OAP £11 (at same address)
For Life/Overseas rates, please ask for details.

Name(s).....

Address

.....

..... Postcode

I/We wish to join the Campaign for Real Ale, and agree to abide by the memorandum and articles of association.

I enclose a cheque for £.....

Signature

..... Date

AYL (Swan Supping)



Branch Diary

Everybody welcome to all meetings!

1997

October

Tuesday 7th 9:00pm Social

Bull & Butcher, Turville : Country pub first licensed in 1617.
Brakspears Mild, Bitter, Special, Old, Reapers Reward (seasonal)

Saturday 11th 2:00pm Regional Meeting

Red Lion, Haddenham : Two bar local overlooking village duckpond.
ABC Best Bitter, Marstons Pedigree, Ansells Best Bitter.

Tuesday 14th 8:30pm Blind Beer Tasting & Good Beer Guide 1998

Launch. Deerhams Inn, Loudwater. Cosy pub but hard to find!
Brakspear Bitter, Fuller's London Pride, Wadworth 6X, Youngs PA, Special, Batemans XB, Taylors Landlord, Rebellion, Morrells Mild

Friday 24th - Saturday 25th 4th Vale of Aylesbury Beer Festival

The Ranch House, Stoke Mandeville. See page 1 for details.

Wed 29th 8:30pm Branch Meeting

White Swan, Whitchurch : High Street. Part thatched 16th century pub.
Distinctive wood panelling in lounge bar. Small separate meeting room.
Fullers London Pride, ESB, Chiswick, Red Fox

November

Wednesday 5th 8:00pm Bonfire Night Social

Swan, Great Kimble. Small converted cottage with two bars.
Adnams Bitter, Fullers London Pride, Guest Beer

Tuesday 11th High Wycombe mini crawl

9:00pm Hogshead. Opened July 1997. See page 3

10:00pm Firmament & Firkin. *Firkin range.*

Friday 21st London Pub Crawl. See page 6 for details.

Tuesday 25th Mini crawl

9:00pm Mayflower, Hazlemere. Corner pub, rebuilt in 1982.

Boddingtons Bitter, Courage Best, Flowers Original

10:00pm Horse & Groom, Tylers Green. Two bar pub on main road.

Morland IPA, Original Bitter, Marstons Pedigree

December

Monday 1st 8:30pm Branch Meeting

Rose & Crown, Saunderton. Well appointed country hotel.
Brakspear Bitter, Morrells Varsity, Morland Original Bitter

Monday 8th Aylesbury mini crawl

9:00pm Brewers Fayre. New Pub, opens October 1997. (See page 3)

9:45pm Butlers. Under new management.

10:30pm Ship. Situated by canal basin opposite the 'blue leanie'.

Tetley Bitter, Greene King Abbot, Marstons Pedigree, Vale

Monday 15th 9:00pm Social

Bernard Arms, Great Kimble. On ridge at rear of chequers estate.
Tetley Bitter, Benskins Best, Wadworth 6X, Fullers London Pride.

Sunday 21st 12:00 Noon Pre-Christmas Social

Red Lion, Whiteleaf. 1th century pub with low ceilings.

Brakspear Bitter, Hook Norton Best Bitter, Bass, Guest Beer

1998

January

Tuesday 20th 8:00pm Branch Annual General Meeting

Venue to be confirmed

February

Date to be arranged. **Brewery Trip.** Ridleys Brewery, Essex

Beer lists subject to change

