



Swan Supping

FREE

Summer 1997



Campaign for Real Ale

Aylesbury Vale & Wycombe Branch

Issue 2

Win tickets to the Great British Beer Festival

See page 7

SPOT THE LOCAL

The branch area has five This highlights the shortage of true 'free houses' in the excellent beers (See page 3). area. The 'Guest Beer Rule' There is only one problem. has increased local choice but Where can you find the beers not the availability of locally locally? At one time, Chiltern brewed beers.

ales were found in many The majority of guest beers A.B.C. pubs, but now they are have to be picked from lists a rarity. Aylesbury recently lost supplied by the brewer or pub an outlet for Vale Brewery company. Most of these are when the Grapes ceased to be a from associated companies or 'free house'. major regional brewers.

The term 'free house' is widely abused, notably by some pub chains which are tightly controlled and offer nothing special in choice. The old owner-occupier free house remains in the minority but is no guarantee of choice. Many free houses are tied to brewers by loans or by high discounts which our local micros cannot compete with.

Why not ask your friendly local landlord to try a locally brewed beer.

The TWO IN-TENTS BEER & CIDER FESTIVAL

July 2 - 5

National Hockey Stadium, Silbury Boulevard, Central Milton Keynes
(5 mins walk to MK central BR)

Wed 7:30-11pm
Thu & Fri 12-11pm
Sat 11:30-11pm

Admission
FREE Wed, Thu & Fri till 4pm
£2 all other times
Free to CAMRA members

Food, Entertainment (not Wed night), Children's tent to 8pm (not a crèche), Free non-alcohol drinks for drivers

Phone 01908 370036/668751

TIME CALLED ON SHORT MEASURE

CAMRA has welcomed reports that the Government is to support a backbench bill for full measure pints.

Ben Wardle of CAMRA said "We would welcome the Government's support for Dennis Turner's Bill. Drinkers have been ripped off

for too long. If you buy a pint of milk you expect to get a pint, why should beer be any different?

He added "The introduction of lined oversize glasses is the only way drinkers can be guaranteed a full and fair pint. We've seen no real evidence that prices would have to rise. Midlands brewer Wolverhampton & Dudley

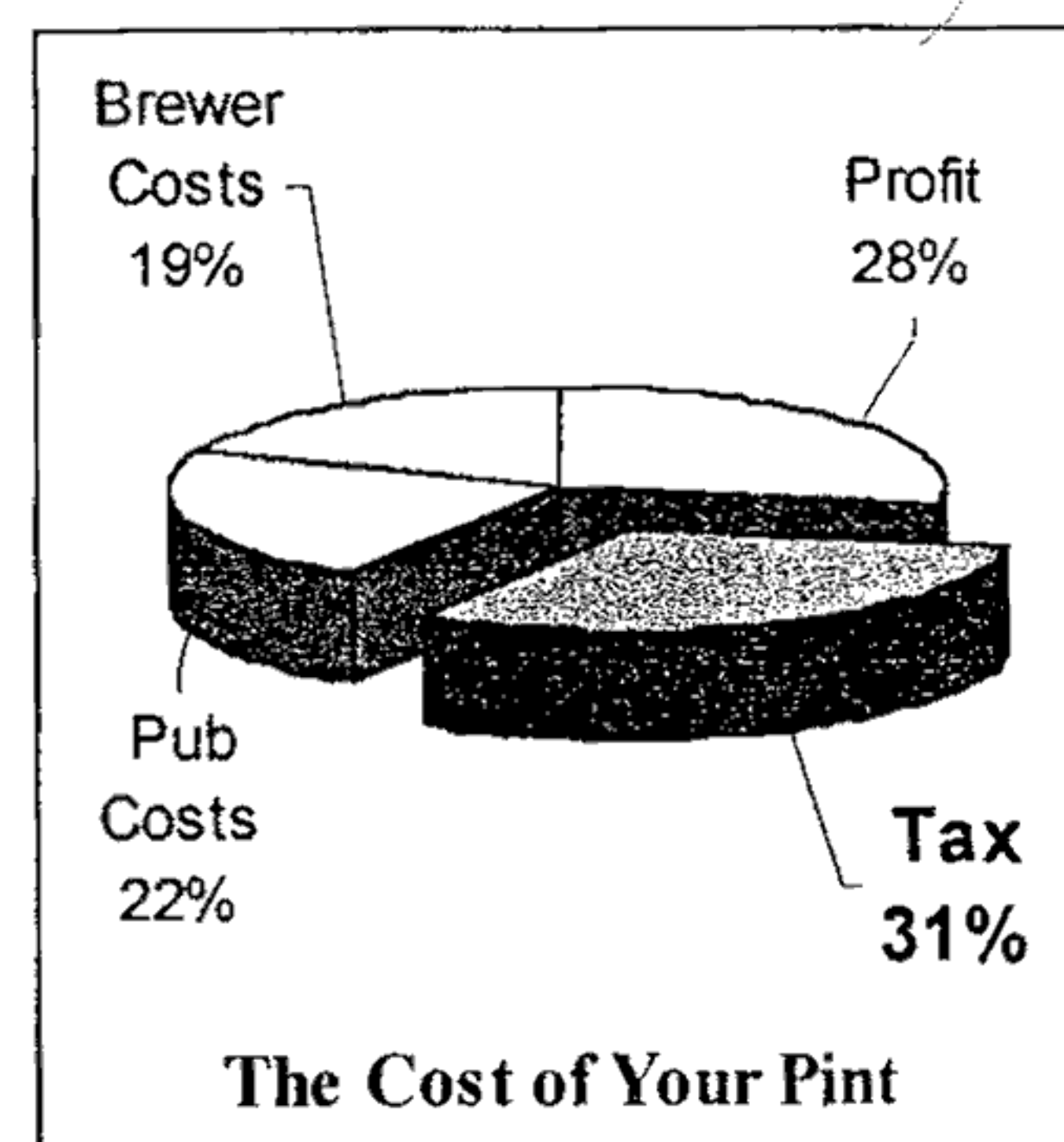
uses lined glasses in over 1000 pubs yet charges lower prices than its competitors."

CAMRA has campaigned for lined glasses for many years and all its beer festivals have used them for over 4 years.



BUDGET BRIEFING

Despite what happens in Since 1979 beer tax has risen July's budget, tax on beer in by 52%. In the same period Britain will still probably be beer sales have fallen by 13% out of line with our European and pub sales in particular by neighbours. On a pint of 28.5%. The current taxation average strength beer (4% system is leading to less ABV) costing £1.60 you pay choice for customers and to 46p to the Treasury. The chart pub closures, particularly in shows where the rest of your the South-East. money goes.



We pay seven times more tax than the French and about six times more than the Germans. The result is 1.1 million pints of duty paid beer, some of it illegal, being ferried across the English Channel every day! Some vans arriving in the UK carry as much beer as a country pub sells in a week.

What can be done? A reduction in duty on beer would reduce the illegal cross-channel trade which is estimated to cost £750 million a year. The legal trips would reduce with an estimated increase of £300 million to the treasury. Our brewers would then be able to compete fairly with their European counterparts. Customers, given the reduced prices, would return to the pub instead of staying at home to drink cheap imports.

Do you agree that you are paying too much for your pint? Join us and campaign for a reduction in duty. Write to your MP at The House of Commons, London SW1A 0AA and let them know your views

Ever had trouble finding
your style of pub in Bucks?



You won't with the definitive
guide to every pub
in the county!

Available by mail at £4.95 inc.
postage & packing from :-
John Wood

10 Warneford Avenue, Halton,
Aylesbury, Bucks HP23 5QD

Please make cheques payable to
'CAMRA BUCKS GUIDE'

**CAMRA's local guide of the
year award winner!**

National News

BREWING STOPPED

News from just outside the branch area, Greenwood's Brewery in Wokingham has ceased regular brewing. There is still a possibility of occasional brews bring produced.

BREWERY CLOSED

CAMRA has described the closure of Crown Buckley's Llanelli brewery by S.A. Brain & Co. as "a local tragedy".

"When Brains took over Crown Buckley earlier this year it seemed inevitable that something like this would happen" said Gary Coles, CAMRA's liaison officer for the brewery.

"The brewers have kept their jobs and we hope that Crown Buckley's beers will continue to be brewed to an excellent

standard albeit at a different brewery." he continued. "This closure is a local tragedy"

BRAKSPEARS

Brakspears are considering the future of two notable country pubs - The White Hart at Northend, which serves Bitter and Special and good food, and The Fox and Hounds at Christmas Common which is a real gem. Decisions may be made in July. Visit them now before its too late.

WETHERSPOONS

New Wetherspoon's pubs are planned for Rotherhithe, Bedford, Reading, Bank Station, Dover, Skegness, Edinburgh, Burton and Torquay - Somewhere to look out for on holidays. Wetherspoon's guest beers for May to July include Otter

Bright, Royal Clarence Pitchfork, Uley Old Ric, Exmoor Gold, Clarks Rams Revenge, Elgoods Greyhound and Hardy & Hanson's Guzzling Goose. One of these days some brewery will have the revolutionary idea of producing a fine, high quality traditional beer called "Bitter", or possibly "Mild".

FAIR DEAL FOR BEER?

Independent research into the relative coverage of beer and wine in the national press has shown that, despite the fact that we drink three times as much beer as wine, there were four times as many wine stories than beer stories. Few papers have a regular beer writer.

96% of wine coverage was 'opinion' whereas 44% of beer coverage was 'news'.

Swan Supping

Swan Supping is distributed free of charge to pubs in the branch area. Published by the Aylesbury Vale & Wycombe branch of the Campaign for Real Ale and printed by the Hogshead, Marlow, to whom we offer our thanks. Circulation 1500 copies.

Edited by Bryan Spink & David Roe.
Editorial Address : 15 Bedwyn Walk, Aylesbury, Bucks HP21 8EQ.
Tel/Fax : (01296) 25764 (H) 0410 147528(M)
E-Mail : bryan_spink@bucks.net

Advertising rates are :-
4.5 x 4.5cm £5, 4.5 x 12.5 cm or 9 x 6.25cm £15,
9 x 12.5cm £25.
10% Discounts for payment in advance.

Copy deadline for next issue, due to be published on 1st October is 16th September.

Subscriptions :- To receive editions of Swan Supping by post, please send SAEs to the Editor.

©Aylesbury Vale & Wycombe CAMRA 1997.
Opinions expressed in Swan Supping are not necessarily those of the editor, or of the Campaign for Real Ale.

CONTACTS

Chairman David Roe 01296 84551
Treasurer Tony Gabriel 01494 527884
Secretary/Contact Bryan Spink (as above)
Regional Director Nick Holt 01296 83554
Aylesbury Mick White 01296 28266
Stuart Cooke 01296 392597
Beaconsfield Colin Staines 01494 674427
Bledlow Ben Walter 01494 481459
High Wycombe Elvis Evans 01494 511248
Marlow John Williamson 01628 486378
Stokenchurch John Bazin 01494 483039
Wendover John & Tina Wood 01296 625215

Useful Addresses

CAMRA HQ:

230 Hatfield Road, St Albans, Herts AL1 4LW.
Tel: 01727 867201 Fax: 01727 867670
E-mail: camra@camra.org.uk
Internet: http://www.camra.org.uk

Trading Standards:

For complaints about short measure, price lists, strength lists (Alcohol by volume), etc.

Aylesbury:

County Hall, Walton Street, HP20 1UP
Tel: 01296 383212

Oxford:

PO Box 618, County Hall, OX1 1DX
Tel: 01865 815000 (Mon - Fri 8:30am-5pm)

Planning Department

For comments, complaints or objections about pub alterations or developments -

Aylesbury:

County Hall, Walton Street, HP20 1UP
Tel: 01296 383205

Advertising Standards Authority:

For complaints about deceptive advertising-
Advertising Standards Authority
Brook House, 2-16 Torrington Place
London WC1E 7HN

New Readers Start Here

The Campaign for Real Ale, is an independent, voluntary, consumer organisation. Membership is open to all individuals, but corporate entities such as breweries and pubs are not members.

CAMRA is financed through membership subscriptions, sales of products such as books and sweatshirts, and from the proceeds of beer festivals. We receive no funding from the brewing industry other than a limited amount of advertising in our monthly newspaper "What's Brewing".

CAMRA's mission is to act as champion of the consumer in relation to the UK and European beer and drinks industry. CAMRA saved real ale, it is no exaggeration to say, and as a result saved many independent breweries. No new ale breweries were set up in the UK for the fifty years before we were founded. There are now around 200 new brewers producing real ale, part of a massive real ale revival.

Membership has grown from around 20,000 in 1989 to over 50,000. So why not join us? See the back page for a membership form or come to one of our socials to find out more.

Brewery News



The Little Brewery Co Ltd, Medmenham

Sam Trueman's Brewery in Medmenham may be a "micro" but it has a range of beers that much larger breweries would be proud of. All this in two double garages. One for brewing and the other for storage. The brewery visit by the branch on Saturday 31st May although poorly attended was excellent. Hot, sunny weather meant that the two firkins of sampling beer were encased in flexible ice jackets and shaded. Lunch on the rear patio facing an enormous garden consisted of cheese, patés and salads complemented by freshly baked French bread.

Henley House is run partly as a business (accounts) training centre by John Trueman, the brewery being set up in 1995 to refresh delegates attending the courses. John's wife, Dresdena, provides bed and breakfast accommodation for people from all over the world and the brewery was named after their son, Sam. The brewer is Iain McKenzie who trained as a winemaker (Napa Valley, California).

The portfolio comprises six beers, some being available locally including at the Chequers, Wheeler End Common and the Hare and Hounds, Marlow. On the evening of one visit in April, John was loading his Volvo estate with firkins for delivery the next day to Wigan and thereabouts.

Now the beers :-

True Gold 6.0% ABV A bottle conditioned lager.

Best Bitter 3.5% Heavily hopped with Northdown hops giving a dry aftertaste and creamy head.

Tipple 4.2% A variable beer, dark and sweet in Winter, light and hoppy in Summer.

Gold 5% Golden beer hopped with Fuggles and Goldings. A high percentage of wheat malt gives a fruity citrus tang. Called "The Flying Beer" up North!

Spring Loaded 6.5% Brewed for spring festivals (Reading). Uses U.S. hops, Willamet.

Percy's Downfall 8.2% This has a lightish colour with reddish hue. Named after Percy, the one-legged electrician who wired the brewery.



Vale Brewery, Haddenham

The Vale brewery is brewing close to capacity producing Notley, Wychert and Edgar's Ale along with a seasonal brew. This has meant that Grumpling has had to be dropped and has restricted planned expansion into producing a range of bottled beers.

Vale's new seasonal brew, 'Hadda's Summer Glory' has been available since the end of June. It is a 4% ABV beer, made with 100% Marris Otter malt and well hopped with Challenger and Golding hops.

Notley Ale 3.3%. **Wychert Ale** 3.9%.

Hadda's Summer Glory 4%. **Edgar's Golden Ale** 4.3%



Rebellion Beer Company, Marlow

The 'spring' seasonal beer is Zebedee (1048 4.7%) and the Summer offering will be Blonde Bombshell (1043 4.3%). Plans are still in hand to move to larger site locally. About 80 local pubs are supplied.

IPA 3.7%. **Smuggler** 4.1%. **Mutiny** 4.8%.

Red Oktober (Autumn) 4.8%. **Old Codger (Winter)** 5%.



Chiltern Brewery, Terrick

The brewery was founded in 1980. Its policy is not to extensively promote its products on pubs and to find its beers on draught is rare. The shop at Terrick with draught beer, brewery related products and real cider is therefore a major source of income. Bottled John Hampden

Ale is now on sale in local Tescos and it is hoped that eventually it may be stocked nationally.

Chiltern Ale 3.7%. **Beechwood Bitter** 4.3%

Three Hundreds Old Ale 4.9%

Bottled Bodgers Barley Wine 8% **John Hampden Ale**



Old Luxters Farm Brewery

Most of the beers are to be found in bottled form except at a few local outlets and beer festivals. A new brew was produced for the Reading festival, **Dark Roast Ale** (approx. 4%) which may be kept all year if successful. Occasional brews are produced for other brewers on request often in bottled form. The brewery site also has a fine art gallery and shop. **Barn Ale** 4.5% (also bottled 5.4%).

HOGSHEAD

THE OLD BREWERY
MARLOW

UP TO 17 CASK ALES AVAILABLE
PLUS CASK CIDERS



FORTHCOMING SINGLE BREWER FESTIVALS
ABROAD COOPER - 6X - BODDINGTONS
GOOD ALE GOOD ATMOSPHERE

17th July	Hoegaarden	Jazz Night
1st/2nd Week July	Vale	
3rd/4th Week July	Cask Ciders	
1st/2nd Week August	Gibbs Mew	
3rd/4th Week August	Greene King	



COLIN AND BRENDA WHILEY
01628 478737





Swanning About



The guide to pubs in the Aylesbury Vale and Wycombe area

Bishopstone lies 2 miles to the South West of Aylesbury. It's a small linear rural village. The village pub is the Harrow.



On this particular visit I arrived at 11:30am not knowing that the opening times had been changed to Noon. The pub was opened up early for me and other customers who arrived at the same time.

The beers on offer were *Wadworth 6X* (£1.90) and *Flowers IPA* (£1.80). Bar meals and snacks are available from Tuesday to Saturday and there's a Sunday Supper Menu with prices starting at £3.95.

The pub has one large room and a number of board games are

available for use including Pictionary, Trivial Pursuit and a Murder Mystery. There's no juke box but there is quiet background music. Outside there is a large beer garden complete with a children's area.



From Bishopstone it's a short cross country walk or drive to Marsh and it's only pub the Prince of Wales which *Real Ale in Bucks* describes as 'A Rare Gem'.

Marsh is an isolated hamlet 3 miles South of Aylesbury. The Prince of Wales has one bar and is the centre for many local

activities including pigeon racing, beagles and the local cricket club.

The only beer available on my visit was *ABC Best Bitter* at £1.76, a rare find these days. This is a 'quiet' pub, the juke box having been removed in 1993



Two miles to the North West over the fields or 5 miles by country roads takes you to Ford and the Dinton Hermit, a friendly and cosy 15th century village inn in Water Lane. The pub is named after a hermit who lived in a nearby cave whose history and whose history is displayed in the pub. One of his famous boots is held in

Aylesbury Museum. Beers on sale are *A.B.C Bitter* (£1.90), *Adnams Bitter* (£1.95) and *Wadworths 6X* (£2). The beer is cheaper in the bar than the saloon. There is no juke box. Bookings are taken for evening meals in the saloon and it was good to see Chiltern Brewery mustards on the tables.

Information

Map

Ordnance Survey Landranger 165

The Harrow, Bishopstone

☎ 01296 748652

12-2:30pm (Not Mon,)

Open to 3pm Sat & Sun

6pm-11pm (10pm Mon)

7pm-10:30pm Sun

The Prince of Wales, Marsh

O.S. Ref. 814088

☎ 01296 612276

12-2:30pm, 6pm-11pm

Dinton Hermit, Ford

O.S. Ref. 778095

☎ 01296 748379

11:00am-2:30pm, 6pm-11pm

Closed Monday lunchtimes



Brewers of Award Winning Ale

Calling all beer lovers. Vale Brewery offer Award Winning Traditional Ales, made from only the finest malted barley and whole English hops, in ready to drink polypins and party packs.

To order, telephone 01844 290008 giving a minimum 24 hours notice.

Price List (Inc. VAT)

Bright beer unless otherwise requested

Hadda's Seasonal Ales are available throughout the year.

BEER	ABV	FIRKIN	POLYPIN	POLYBOX
Notley Ale	3.3%	£68.00	£37.00	£18.00
Wychert Ale	3.9%	£70.00	£40.00	£20.00
Edgar's Golden	4.3%	£72.00	£42.00	£21.00



COMMUNITY CENTRE

WINGRAVE

(Off Aylesbury to Leighton Buzzard Road)

Selection of 25 Different Beers & Ciders

All Beers £1.50 pint
Admission £1
(CAMRA Members 50p)

FRIDAY 5th - SUNDAY 7th
SEPTEMBER

Special Bus Service Available from Aylesbury

FURTHER INFORMATION
 GEOFF SMITH 01296 681257

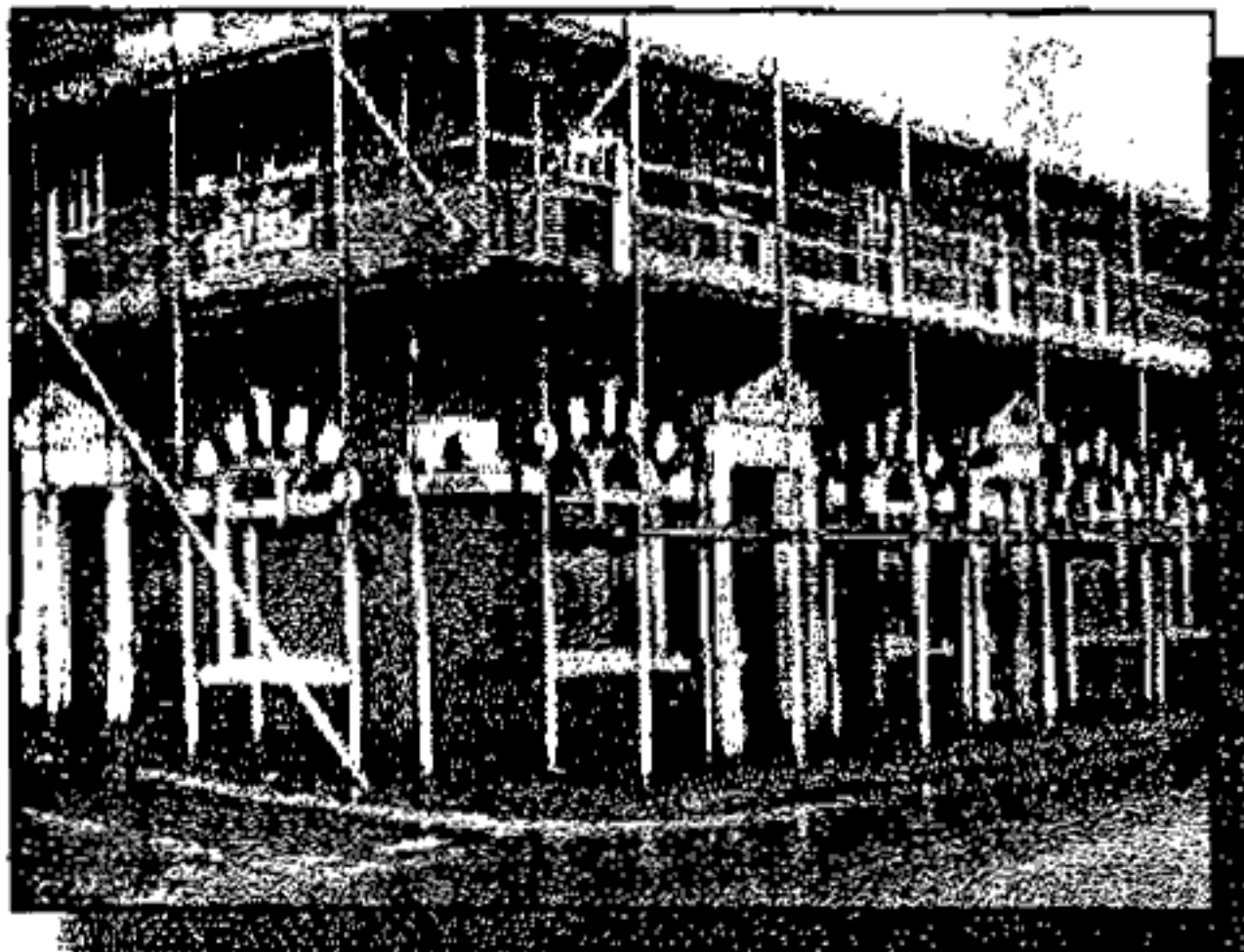


Black Country Trip 21st June 1997



The branch set out on its seventh annual Black Country trip on a wet Saturday morning in June. Pick ups were made as usual in Aylesbury, Wendover, High Wycombe and Stokenchurch then it was off up the M40 to our first stop in Halesowen.

The Waggon & Horses has been a popular first call for many years. This year we were welcomed with cries of "Merry Christmas" and decorations around the pub. To celebrate the longest day, the pub was holding Christmas in June complete with festive ales and a good selection of other beers. The pub



The Waggon & Horses

After a couple of drinks it was time to move on and eat. We stopped at the Little Sausage and Porter in Cradley Heath where we could sample the famous Desperate Dan Pies along with pints of Lumphammer or Tight Barsteward. Fed and 'watered' we were ready to move on. Our local guide, Adrian, told us that we were passing the Three Shovels, a pub recently taken over by

itself is being refurbished and scaffolding masked the outside of the building.



Little Sausage & Porter

Brains from Banks, so half the party stopped off to try the beers here while the rest journeyed on to our next stop.

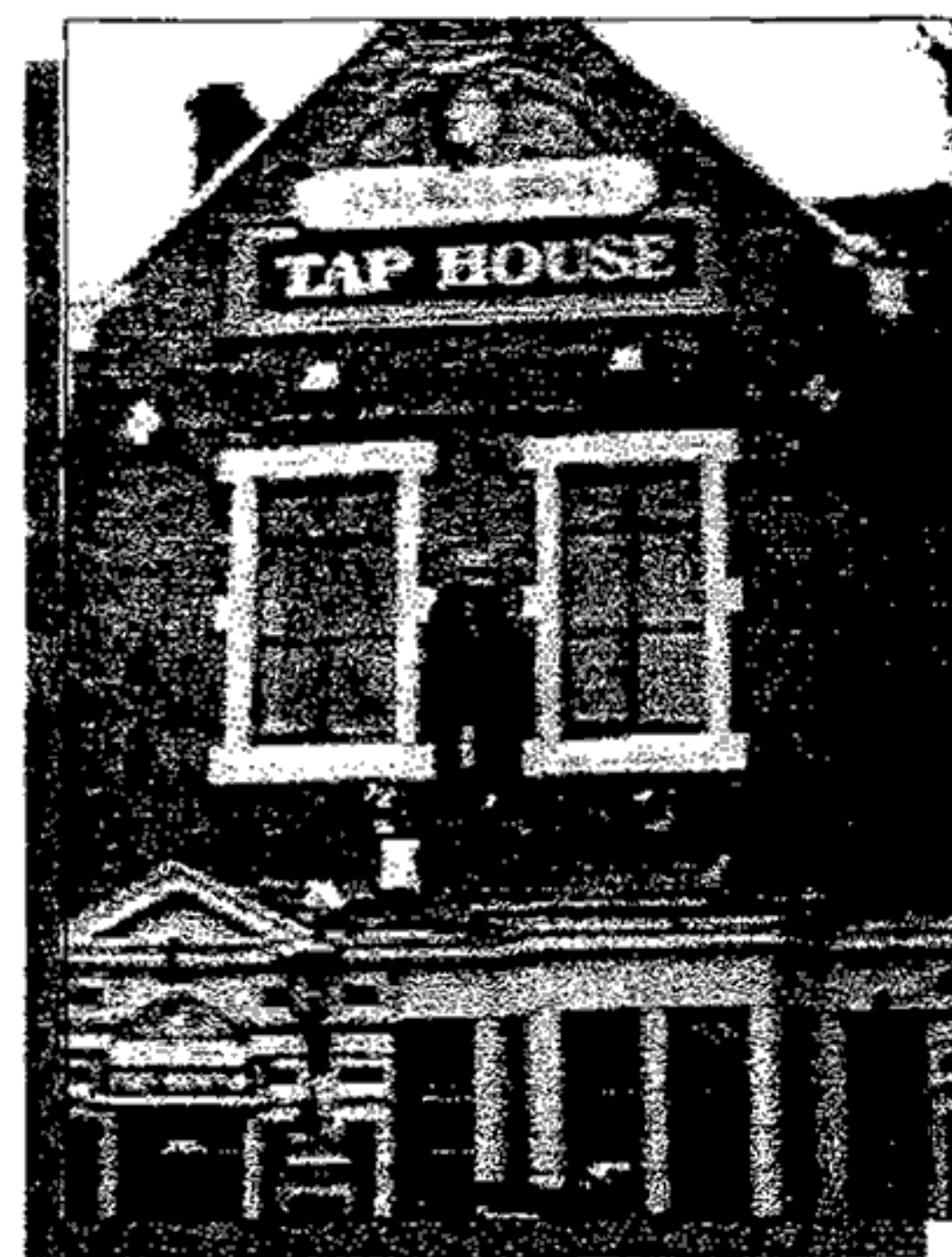
A wet walk between pubs and we arrived at another regular favourite, The Vine (aka Bull & Bladder). Bathams mild (£1.18) and bitter were on offer as usual. As the rain was still coming down, the normal crawl up the locks wasn't attempted. The itinerary, like the participants, started to get a little fluid from here on.

Next on the list was the Blue Brick Tap House at Round Oak selling Bank's and Camerons. Then it was on to a beer festival by a canal

This was organised as part of 'Tipton Midsummer Madness II'. There was a chance to sample a good range of beers and purchase canal souvenirs. The beer was served in plastic glasses but was still well received.



Malt House Stables Beer Festival



Blue Brick Tap House

Another firm favourite on these trips is the Beacon Hotel in Sedgley for a pint or two of Sarah Hughes Dark Ruby Mild. The latest addition to their range, Amber Ale, was also on offer. One or two of the party were starting to show signs of the days activities by this stage.



Beacon Hotel, Sedgley

So it was on to our final stop at Great Bridge and a chance to take in few pubs and food or just relax after a hard day's pleasure. The main pub was the Port 'N' Ale, a free house serving Bathams amongst others.

It was soon time to board the coach and head back down the motorway making plans for next year's trip. The main request? To spend more time in the Waggon & Horses! Overall a very pleasant trip despite the weather. Any takers for next year?

Ron & Rita Welcome You To The Clayton Arms

16 Oxford Road
Marlow
Bucks. SL7 2NL
Tel : 01628 - 478620

Traditional Family Run Pub Offering :-

Home Cooked Lunches & Snacks

Finest Brakspears' Ales

Summertime Patio Area

**Non-Smoking Dining Area
Suitable For Families**

AS SEEN IN THE 'GOOD BEER GUIDE'



**Old Luxters
Brewery**

Traditional
Ales
and Bottle
Conditioning

Tel 01491 638330

Sheriffes



Elegant Summer shoes
direct from Spain at
competitive prices.

Kingsbury Court, Aylesbury
Opposite Sainsburys
01296 334210

Membership News

As at 21st June the branch has 314 members. A warm welcome to the following who have recently joined CAMRA :

Mr S Day, Landlord of White Horse, Whitchurch

Mr D Lester, Downley

Mr & Mrs W Simpson, Hazlemere and to **Mr R Barlenoch**, Booker, who has moved into the branch area.

This month sees the launch of the new 'members brochure' which is sent to all new members in our branch. This gives details of how CAMRA is structured, how the branch is organised and the activities that members get up to!

More importantly, it also gives a map of the area covered by the branch which covers only part of Buckinghamshire and includes places in S.E. Oxfordshire such as Thame and Chinnor.

If you would like a copy, please contact the branch or membership secretary. Copies are always available at branch meetings.



INTERNET

If you want regular, up to date news about the branches activities and local stories then the best place to look is the branch web pages. The latest edition of Swan Supping is also available if your local has run out of copies.

This branch is not alone in having its own web pages. An increasing number are becoming internet connected. A full list of branches on the web is maintained by CAMRA HQ and can be found at the campaign's web site.

Many other useful and interesting beer related sites can be found such as *Beer Scene* and *Brewworld*. The 'Beer Hunter' himself, Michael Jackson, also has his own web pages.

CAMRA Aylesbury Vale & Wycombe
http://homepages.bucks.net/bryan_spink/

Other Branches on the Net

<http://www.camra.org.uk/branches.html>

Beer Scene

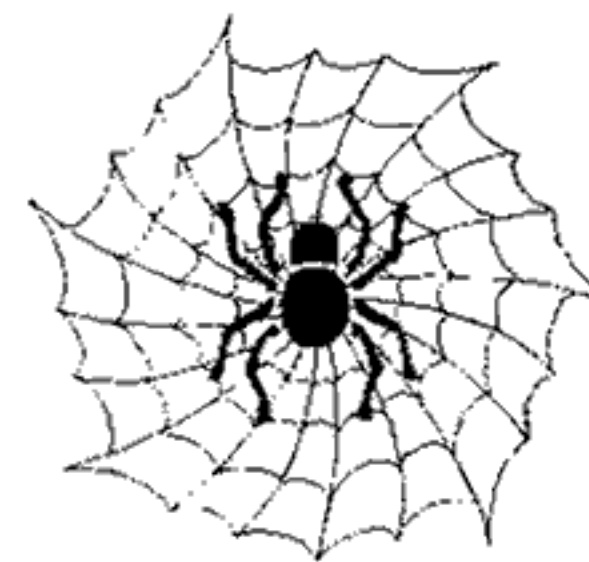
<http://www.demon.co.uk/beerscene/>

Brewworld

<http://www.brewworld.com/>

Michael Jackson

<http://www.beerhunter.com/>



VILLAGE PUB COMPETITION

Village pubs will be opening their doors to become Aylesbury Vale's best through a new competition organised by the council that has been set up in memory of District Councillor Ted Payne, who died in January and who regularly organised pub quizzes across the Vale.

With over 186 potential applicants throughout the villages, fierce but friendly competition is expected to raise the profile of village pubs within their local communities and help encourage visitors to the area.

Competing pubs will be scored on a range of criteria decided by the judging panel. These may include the variety of beers or entertainment provided, community services offered, the friendliness of the staff and the consideration of noise levels given to neighbours. Marks are also likely to be awarded for hygiene and environmental standards

The panel will consist of a member of the British Institute of Innkeepers, District Councillors and Officers, including the Chairman of the Parishes Sub-Committee, members of Ted Payne's family and representatives from the local media.

It is hoped the competition will take place at the end of the Summer and will become a prestigious annual event.

Yes! It's here again

5th Annual Beer Festival

to be held at
Haddenham's ever popular

RISING SUN

Friday, Saturday
September 5th & 6th

Tickets £2.50 which includes A **FREE PINT**
OF **REAL ALE** of your own choosing

PIG ROAST ON SATURDAY

Hot and cold snacks always available

Rising Sun
9 Thame Road, Haddenham
Tel 01844 291744

ORIGINAL

PUB

SIGNS

01234 751746

PORTFOLIO OF OVER 500
HANDPAINTED IN OILS

Diary

July

2nd - 5th The Two In Tents Beer and Cider Festival

National Hockey Stadium, Milton
Keynes Tel : 01908 370036

4th - 5th Southdowns

Lewes Town Hall

5th - 6th Sittingbourne

Sittingbourne & Kemsley Steam
Railway Tel : 01795 429078

9th - 13th Derby

Assembly Rooms Tel 01332 770209

11th - 13th Woodcote Rally

Whitchurch Hill, 5m N of Reading
Tel : 0118 9402787

11th - 13th Tameside Canal Festival

Ashton-under-Lyne, Gtr Manchester
Tel : 0161 427 7099

15th - 19th Chelmsford Sports Hall,

Anglia Polytechnic University
Tel : 01245 464130

17th - 19th Kent Merton Farm,

Canterbury Tel : 01227 463478

25th - 27th Cotswold Postlip Hall,

Nr Winchcombe, Glos. Tickets Only.

August

1st - 3rd Mansfield & Ashfield

Countryman Inn, Kirby-in-Ashfield

5th - 9th GBBF Olympia London**15th - 16th Portsmouth**

Guildhall, Portsmouth
Tel : 01329 311439

19th - 24th Peterborough

The Embankment, Bishops Road
Tel : 01733 764296

22nd - 23rd Mumbles

Ostremer Centre

29th - 30th Harbury, Warwickshire

Village Hall Tel : 01926 613256

September

6th Maidstone Museum of Kent Life.

Tel : 01634 241538

9th - 13th Chappel, Essex

East Anglian Railway Museum
Tel : 01206 242524

11th - 13th Sheffield

Hallam Union, Pond Street
Tel : 0114 2664403

22th - 13th Tamworth

Assembly Rooms Tel : 01827 68652

12th - 13th Shrewsbury

The Music Hall, The Square
Tel : 01743 352842

18th - 21st Booze on the Ouse

St Ivo Recreation Ctr, St Ives, Cambs
Tel : 01480 473364

18th - 20th Burton-on-Trent

Town Hall Tel : 01283 569310

18th - 20th Rhythm 'n' Brews

Arts Centre, Vane Terrace, Darlington
Tel : 01325 388606

25th - 27th Keighley

Victoria Hall Tel : 01535 610829

26th - 27th Carmarthenshire

St Peters Civic Hall, Carmarthen
Tel : 01627 234885

October

24th-25th Aylesbury

The Ranch House, Stoke Mandeville

Beer Festivals

Great British Beer Festival, Olympia, London. 5th - 9th August

The 1997 Great British Beer Festival is the biggest real beer festival in Britain, and is entirely run by unpaid volunteers from CAMRA, the Campaign for Real Ale.



Tues 5th to Sat 9th August

This year the festival will be in both the National Hall and the Grand Hall at Olympia. This expanded space should allow for more comfort for visitors including even more seating, and a choice between areas with music and without. 42,000 visitors are expected over the five days. The Festival will be serving over three hundred British cask conditioned beers, at least forty traditional ciders and perries (pear cider) and nearly two hundred traditional foreign beers, including cask conditioned draught beers from the Americas and Continental Europe. The most important beer competition in Britain, the Champion Beer of Britain, is judged and announced just before the festival opens to the public on Tuesday.

Advance tickets are available from CAMRA HQ but they're not necessary, tickets are usually bought on the door. There is a family room where accompanied children can stay. Unfortunately people under 18 aren't allowed in the Festival hall. There is entertainment laid on in the family room, which closes at 9pm. (This is not a supervised crèche - sorry!) The site is fully accessible for the disabled, including toilets. There is an entry fee for each session, you will then pay to hire a souvenir glass which you may take with you when you leave. There will be a wide range of food concessions: last year everything from Cajun chips to oysters. Entertainment is available at every session in the National Hall.

	Opening Times	Prices (* members)	Entertainment includes:
Tuesday	5:00pm - 10:30pm	£4.00 (£3.00*)	Chaminade String Quartet
Wednesday	11:30am - 3:00pm	£1.00 (£0.50*)	
	5:00pm - 10:30pm	£4.00 (£3.00*)	Comedy Night - Compere : Brian Cookham
Thursday	11:30am - 3:00pm	£1.00 (£0.50*)	
	5:00pm - 10:30pm	£4.00 (£3.00*)	Milestone Jazz Band
Friday	11:30am - 10:30pm	£5.00 (£4.00*)	Evening : STEELEYE SPAN !!!
Saturday	11:00am - 7:00pm	£3.50 (£2.50*)	Kit Packham & One Jump Ahead 2:45pm Pub Quiz - £5 per team to enter 14 great prizes to be won

R	M	B	M	R	G	W	W	F	N
E	E	G	A	V	S	Y	O	D	R
B	S	G	H	R	C	R	E	O	E
E	C	R	N	H	N	R	I	O	T
L	M	G	E	A	K	B	N	W	L
L	U	R	M	T	B	O	J	H	I
I	T	U	D	C	X	D	V	C	H
O	I	B	E	N	H	U	A	E	C
N	N	H	M	L	S	G	L	E	Z
S	Y	X	D	K	X	N	E	B	H

Name

Address

Post Code Phone

Win tickets to the Great British Beer Festival

We have three pairs of tickets for the Saturday session of the festival to be won. To enter find the following ten words in the grid all relating to local breweries:

*Barn, Beechwood, Chiltern,
Headbanger, Luxters, Medmenham,
Mutiny, Rebellion, Vale, Wychert*

Mark them on the grid. Add your name, address and phone number. Cut it out or copy it and send it to the editorial address on page 2. First three correct entries out of the hat win a pair of tickets.

Closing date Thursday 31st July

APPLE - Cider and Perry

Branch Cider Rep : Elvis Evans



So Wycombe will soon have its first Hogshead pub. The normal policy in a Hogshead is to offer at least one real cider. I'm hoping that this will be the case in Wycombe as, if so, it will be the only draught real cider outlet in town.

Currently the only pub that I know of in our branch area with draught real cider is the Hogshead in Marlow. Unless, of course, anyone out there knows different.

Note that Addlestons is not counted as real. Very nearly, but not quite.

Is this the most unlikely cider seller of all? The Bucks Goat Centre is located to the south of Stoke Mandeville on the

road to Risborough. Aside from other farm products it is to be found that real cider is available here. Good luck to them in this enterprise.

I hear that the Royal Foresters pub between Maidenhead and Bracknell in Berkshire has closed. This pub always sold real cider and usually a decent range of it too. Sometimes even including a perry. It was a real rural sawdust-on-the-floor type of place. As near to a cider house as we're likely to get in this part of the world. A shame.

The CAMRA Guide to Real Cider available from book shops or CAMRA HQ (01727) 867201 £7.99

KING'S HEAD UPDATE

The lease for the King's Head, Aylesbury is expected to be signed shortly and it should be open for business from November.

Before that, there will be a few special events (with refreshments arranged by the Queens Head) - for example, a jazz concert, early August; Shakespeare, August Bank Holiday; Aylesbury Charter Day, 6th September.



Anyone wanting to look round this historic inn will be able to do so from the beginning of August.

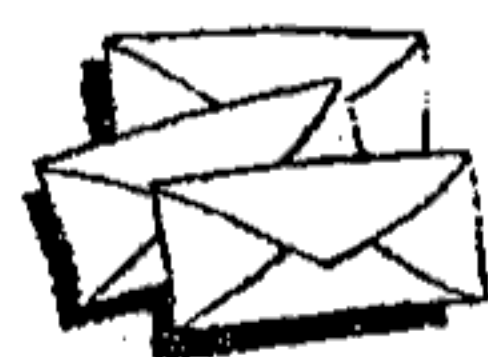


Glastonwick Beer Festival

This festival was held in early June in Southwick, near Brighton.

The idea came from Attila the Stockbroker, a poet and ale lover from the town. He noticed that beer sold at music festivals wasn't very interesting and the music at beer festivals was not the best either.

So he decided to hold a festival with interesting bands and unusual beers from small breweries. Several brews were one-offs made specially for the festival and the rest were pretty obscure. And as for the music? Any beer festival with a line-up of Pressgang, Otway, Bamstormer and Blyth Power (as seen on Folk Roots) has got to be worth a visit. On top of all that it was a blazing hot sunny weekend. Just sometimes the world is a nice place to be.



Letters

Send your letters to the editorial address on page 2.

A copy of the CAMRA manifesto (see Swan Supping Issue 1) was sent to parliamentary candidates of the three main political parties before the General Election. Only two replies were received to our request for their views.

From Chris Bryant, Wycombe Labour Party:

Many thanks for your letter on behalf of CAMRA. It would take me some time to answer all the questions in the leaflet, but my broad feeling is that maintaining the distinctive character of our pubs (and the flavour of our beers) is vital, especially in areas such as this where there is a great danger that pub after pub will become a replica of some ghastly prefabricated pseudo-Elizabethan monstrosity.

I also believe that the present licensing laws are ludicrously antiquated (all Lloyd George's fault in World War One) and that local magistrates should be allowed much wider discretion - as long as there is a full consultation process with local residents and businesses.

I would also like to see the diversity of pubs maintained although I am opposed to any excessively draconian prevention of mergers as I suspect it is more likely to lead to closures than protecting the interests of customers.

From David Lidington, Aylesbury Conservative Party

A number of points which are made in the CAMRA leaflet are detailed and I am not an expert on the brewing and beer retailing industry and want to know more about the views of licensees, brewers and consumers before coming to firm views.

I agree with you about the need to maintain a diverse beer market and a range of independent brewers. The guest beer rule is clearly important as a means of extending customers' choice and the Conservative Government did of course fight off a recent European move to undermine this arrangement.

As someone who drinks beer and Wine I can certainly see the attraction in a reduction in alcohol duty. However, that would leave open the question of whether the resultant gap in funding should be made up by cuts in expenditure programmes or increases in other forms of taxation. I think that the Chancellor's decision to freeze beer duties in recent budgets has illustrated well the Government's concern to protect the domestic market in the face of illicit trade.

My instinct is to be sympathetic to your proposal for a lower rate of tax for small brewers. The devil of course would be in the detail. Much would hinge on the definition of "small". One would have to guard against introducing unnecessary complications and therefore administrative expense into the tax system.

I agree with your statement on responsible drinking and with your support for the liberalisation of licensing hours subject to appropriate safeguards. I agree with you that the new children's certificate system needs to be reviewed.

A 'standard letter' was also received from the Green Party candidate for Wycombe, John Laker, who generally agreed with the manifesto and mentioned that he used to be a CAMRA member some time ago.



To The Board of Directors Marston, Thomson & Evershed

From Trevor Haynes, Hazlemere

Dear Sirs

The Kings Head, Prestwood

My interest is merely as a previous regular customer who wishes to enjoy the pubs facilities in the future. I write to respectfully suggest your consideration of a number of issues before embarking on any alterations to the above public house.

I understand that this pub was a very successful venture for many years. It only ceased to be so due to well publicised but unfortunate personal difficulties of the landlord which deprived the business of trade and profit over its final two year period.

The reason for the pubs success was that instead of competing with the numerous other pubs in close proximity it offered something different what it offered and what attracted me any many others was the following

1. A complete lack of television, music, machines and the smell of hot food.
2. Two small bars, not one knocked out of two to make a large noisy atmosphereless space.
3. Real coal fires not gas fuelled imitations.
4. Well kept real ales and ciders and the absence of nitrokeg and lager.
5. The unspoilt genuine timeless atmosphere of the place.

There is a growing number of discerning drinkers who seek out unspoilt village pubs.

Pandering to short term fads in pubs located in areas such as the above can only lead to longer term failure due to strength of competition and loss of discerning clientele. Once altered the internal fabric and structure cannot be returned, it is permanently lost.

I appreciate my interest is that of a customer not as a businessman, but I firmly believe your chances of success with this venture lie with doing very little, rather than making irreversible change.

I wish you every success



National News

PUB OF THE YEAR

CAMRA awarded the title of Pub of the Year to the Sair Inn, Linthwaite, near Huddersfield Yorkshire. Landlord Ron Crabtree said he was "stunned to hear the great news".

The pub dates back to 1700 and has four rooms each with an open fire, flagged floors, wooden settles and a grandfather clock that is as timeless as the pub itself.

The Sair is also home to a small brewery, The Linfit, which brews a range of real ales including a "Janet Street Porter" and a "Leadboiler" (named after locals who were reputed to have tried to melt lead using boiling water).

A regular in the Good Beer Guide since 1985 the pub currently features as "The Blue Boar" in the new TV series Wokenwell.

Runners up

Pot Kiln, Frilsham, Berks
Railway, Yorton, Shropshire
Blacksmiths Arms,
Calbourne, Isle of Wight
Boat, Asleworth, Glos.

WENDOVER

The White Swan was closed for a while for 'tasteful renovation'. The toilets have been upgraded but the interior remains much as before. There's no food but a range of Morland ales and a guest beer are on offer.

PRINCES
RISBOROUGH

A proposal to introduce a bye-law banning drinking in public places in Princes Risborough was turned down by Wycombe District Council despite the backing of the Town Council and district councillors.

AYLESBURY

Butlers has been given a lick of paint and reopened with a new landlord.

The Saracens Head has been closed for refurbishment.

Forthcoming guest beers at the Queen's Head are Gales HSB, Caledonian 80/- and Sheperd Neame Spitfire.

Bank's beers should be on sale in The Huntsman in the near future, although this has been promised for some time since they purchased the pub from S&N last year.

Local News

HIGH WYCOMBE

There has been some progress on the new Hogshead pub which is to be in the old Hull, Loosely & Pearce furniture store. The handpumps on the hoardings outside suggest Adnams, Greene King Abbot, Gales HSB and Flowers.

CADMORE END

The Old Ship has curry nights (mild, medium and hot) on the first Tuesday of each month. There are also theme nights (e.g. Russian) on the 3rd Tuesday of each month. The pub is currently serving Brakspears Bitter, Old and Hop Demon. Brakspears latest seasonal beer, Regatta Gold, was launched on 21st June.

MARLOW

The Bank of England has been refurbished and has reopened as a 'Hungry Horse' free house with new landlord. Greene King beers (IPA and Abbot) are still on sale together with Draught Bass and Martha Greene's Brewery Ale.

WHEELER END

The Chequers have added Timothy Taylor's Landlord and Weston's Old Rosie to their extensive range which

includes Brakspears, Fullers, Greene King and Brains Dark. Live country/folk music on Tuesday evening.

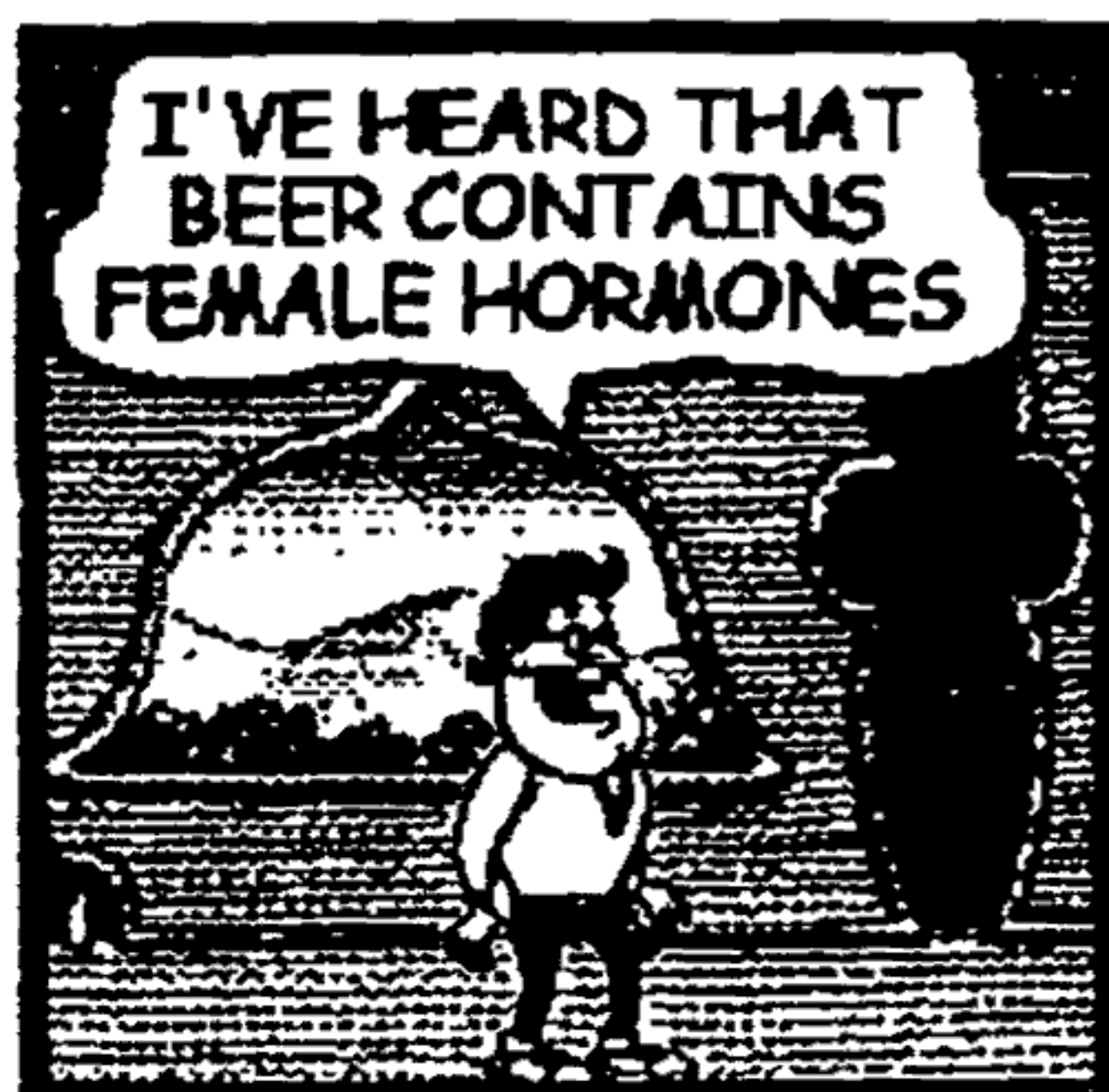
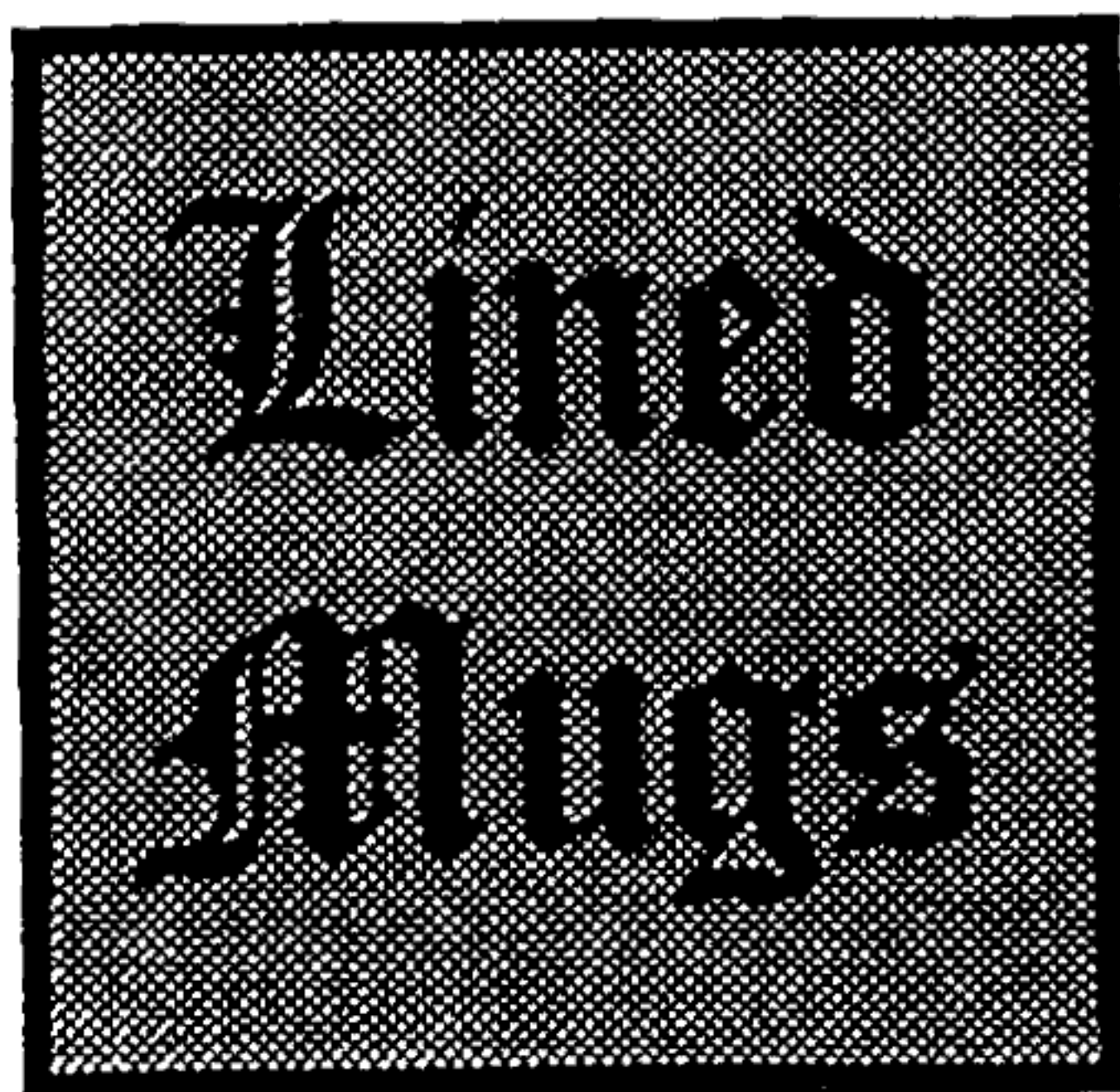
See Page 2 for our award winning Local Guide

NEW OXFORDSHIRE
GUIDE

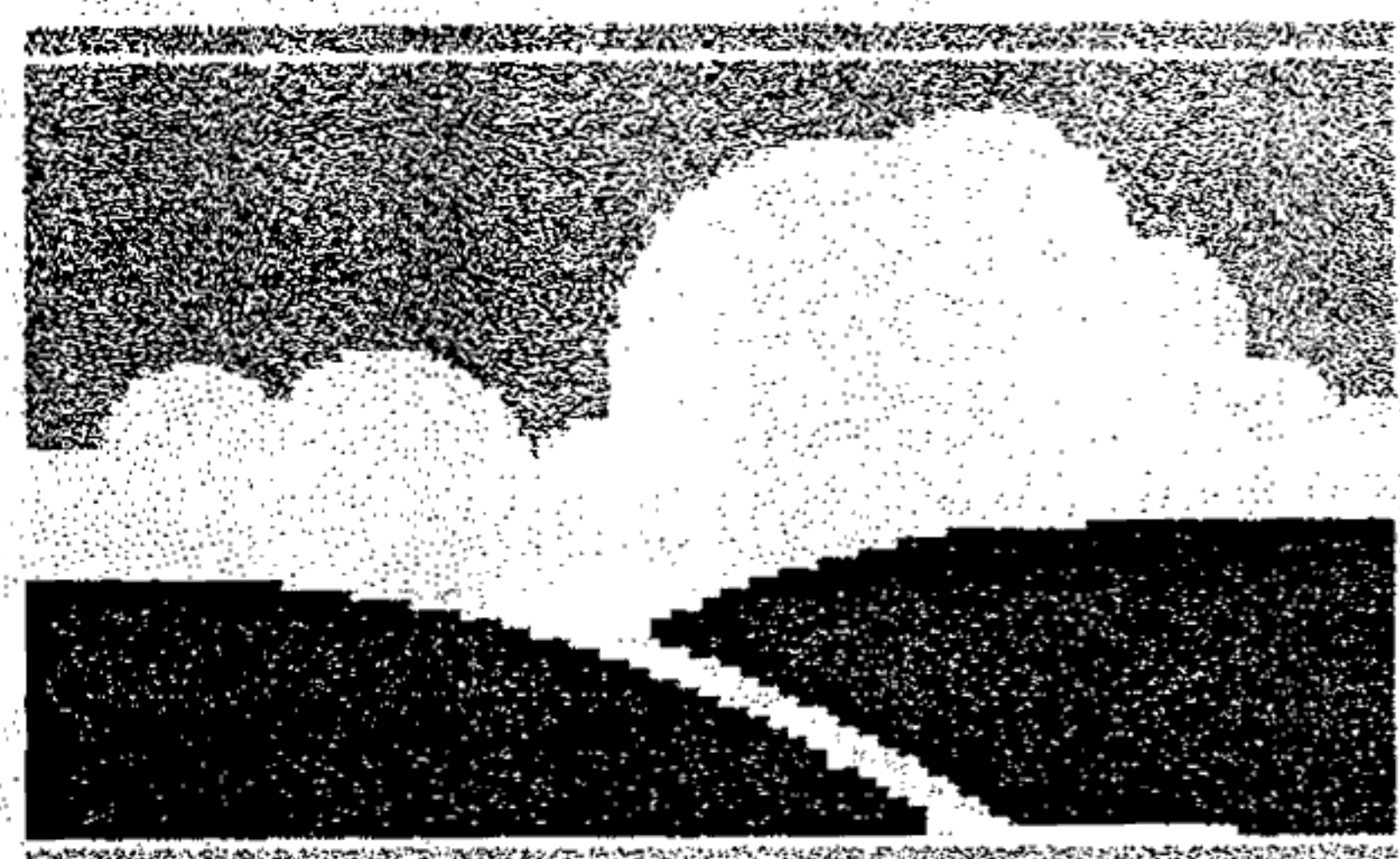
The Aylesbury Vale & Wycombe branch of CAMRA is joining forces with the other four branches covering pubs in Oxfordshire to produce the first guide to the whole county since 1983 before the end of the year.

The format will be similar to the award winning 'Real Ale in Bucks' and will give details of over 1000 pubs. To accomplish this, all the pubs will have to be surveyed and the details entered into the pub database system. Of these pubs, the forty around Thame and Chinnor are covered by our branch.

If you are a CAMRA member from this area, we would welcome any input you would care to make to help us with this work - please contact the Editor.



The 4th Vale of Aylesbury Beer Festival
The Ranch House, Lower Road,
Stoke Mandeville
24th - 25th October 1997



Organised by the Friends of Florence
Nightingale House
with the co-operation of the
Aylesbury Vale & Wycombe branch of CAMRA

MORE BEER THAN LAST YEAR !!
1512 pints drunk by 7pm Saturday!!

Telephone 01296 29975
 for details or to sponsor a barrel of beer!

Registered Charity No 802733

JOIN CAMRA TODAY

Just fill in the form below and send your remittance
 (payable to CAMRA) to
 Membership Secretary, CAMRA,
 230 Hatfield Road, St Albans, Herts, AL1 4LW

Rates are Single £14, Joint £17 (at same address),
 Student/OAP/Unemployed/Disabled £8
 Joint OAP £11 (at same address)
 For Life/Overseas rates, please ask for details.

Name(s).....

Address

Postcode

I/We wish to join the Campaign for Real Ale, and agree to
 abide by the memorandum and articles of association.

I enclose a cheque for £.....

Signature

Date

AYL (Swan Supping)

Branch Diary

Everybody welcome to all meetings!

July

Tuesday 1st 8:30pm Branch Meeting
 Greyhound, Beaconsfield

Wednesday 2nd - Saturday 5th Beer Festival
 Hockey Stadium, Milton Keynes

Tuesday 8th Oxfordshire Guide Survey
 Thame - Starting at the Six Bells 8:00pm and ending
 at the Swan 10:30pm.

Monday 14th Oxfordshire Guide Survey
 9:00pm The Inn, Emmington,
 10:00pm Crown, Sydenham

Wednesday 23rd Oxfordshire Guide Survey
 8:30pm Feathers, Postcombe,
 9:30pm Lion, Tetsworth

Thursday 31st 9:00pm Social
 Queen, Victoria Street, High Wycombe

August

Tuesday 5th - Saturday 9th (See page 5)
 Great British Beer Festival, Olympia, London

Thursday 14th Brewery Trip
 Hook Norton (FULLY BOOKED)

Monday 18th 9:00pm Social
 Royal Standard, Widmer End

Wednesday 27th 8:30pm Branch Meeting
 Gatehangers, Ashendon

September

Tuesday 2nd 9:00pm Social
 Gate, Bryants Bottom

Monday 8th 9:00pm Social
 Cherry Tree, Kingston Blount

Thursday 18th 9:00pm Social
 Hogshead, High Wycombe

Monday 22nd Quainton Crawl
 9:00pm George & Dragon, 9:30pm White Hart,
 10:15pm Swan & Castle

Monday 29th 8:30pm Branch Meeting
 Lion, Waddesdon

October

Friday 24th - Saturday 25th (See this page)
 4th Vale of Aylesbury Beer Festival
 The Ranch House, Stoke Mandeville.



Good Beer Guides

Munich & Bavaria
Belgium & Holland
Prague & Czech Republic
The ideal holiday guides
 Available from bookshops or
 CAMRA HQ (01727) 867201