

FREE

Swan Supping

Issue 133

Aug/Sep 2019



**Another great
Open Day held by
Rebellion Brewery!**

See Page 4



**CAMPAIGN
FOR
REAL ALE**

Newsletter of the Aylesbury Vale & Wycombe Branch of CAMRA

avw.camra.org.uk

Circulation 6000

SUMMERFEST 2019



CIRCA 16 ECLECTIC REAL ALES (Including beer from the wood)

Thursday 22nd August (17.00 – 23.00)

Friday 23rd August (11.00 – 23.00)

Saturday 24th August (11.00 – 00.00)

Sunday 25th August (12.00 – 20.00)

Bank Holiday Monday 26th August (11.00 – 23.00)

**The RBL Club (Marlow) Ltd, Station Approach, Marlow, SL7 1NT
(01628) 486659 / www.rblmarlow.co.uk**

Located 75 metres from British Rail Station Marlow

MARLOW'S ONLY ROYAL BEER FESTIVAL



**MARLOW
ROYAL BRITISH
LEGION**



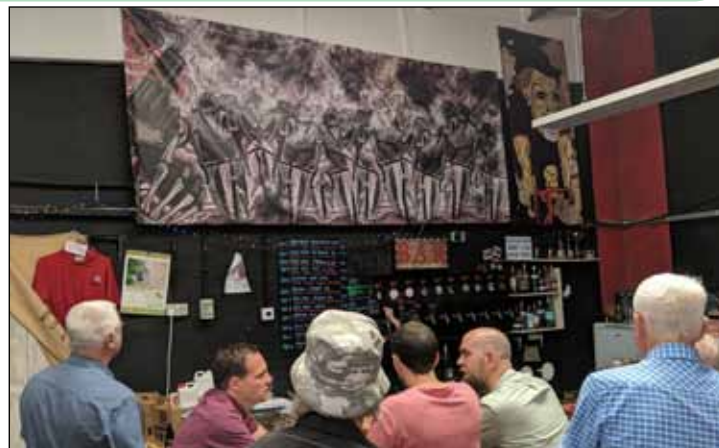
NEWS FROM THE EDITOR



A interesting summer has been had so far! Not only do we have a new Prime Minister in Boris Johnson as he leads us to the sun-lit uplands of Brexit, but we have competed in various World Cups (actually winning one) and enjoyed/suffered the hottest day ever in this country! It must be time for the football season to start and herald the approach of winter!

25 people enjoyed the best day out of the year when we took the coach to the Black Country (for the 29th time) and visited some of the finest pubs in the country! As you can see below the weather was gorgeous as

we drank and dined at the **Coach & Horses**, Weatheroak, although this wasn't as important when we visited the **Fixed Wheel** brewery (pictured top right) along with a load of other favourites - both old and new. Look out for details in future issues of *Swan Supping* and join us for our 30th anniversary trip next year!



CAMRA membership is steadily increasing and we need members voices to be heard as pubs are still closing at an alarming rate - check page 5 to see yet another potential loss for the branch!

Despite a small increase in the membership fee, it is also great value as from 1st July 2019, all new and renewing **CAMRA** members will now receive: £30 (60 x 50p) worth of **CAMRA Real Ale, Cider and Perry Vouchers** redeemable at over 1470 pubs nationwide, including **J D Wetherspoon, Stonegate, Brains** and **Castle Rock** managed pubs. All existing **Wetherspoon** vouchers are still valid during the next 12 months.

The **CAMRA Voucher Scheme** is in addition to the Real Ale Discount Scheme where around 3500 pubs offer great discount benefits to membership card-carrying **CAMRA** members.

My thanks to all who have contributed to this issue of *Swan Supping*, especially all those who contribute to our Local News section, and those who deliver the finished magazine to the pubs, breweries and festivals etc. Also, thanks once again to Colin Stanford for the cartoon.

Hope to see you at the **Great British Beer Festival!**

David Roe, *Swan Supping* Editor

editor@avw.camra.org.uk

NATIONAL CAMRA NEWS

The **Great British Beer Festival (GBBF)** is one of the biggest, most exciting and well-known events in the beer and cider world. Organised by **CAMRA** it brings hundreds of real ales, international beers and real ciders and perries under the iconic Olympia roof.

Come along this summer from Tuesday 6th - Saturday 10th August at the **GBBF** for the live beer experience! Choose from over 1,000 British and international beers, ciders and perries, alongside the fabulous wine and gin bar (new for 2019). This year you can take a journey from the smallest seed to the perfect pint, so come and experience the natural magic of grain to glass, while enjoying live music, delicious street food and the incredible selection of only the finest beers available.

As well as the huge range of drinks on offer, you can enjoy a varied selection of street food and snacks. Entertainment is also included as part of the ticket price with live music in the afternoons and evenings. Why not test your skill on a variety of traditional pub games, and browse the festival shops for pub books, brewery memorabilia and **CAMRA** merchandise. You'll get the chance to find out more about **CAMRA's** vital campaigning to protect pubs and support British real ale, cider and perry producers. **CAMRA** book authors will be on site to sign books and talk about their work.

Beer experts will be running beer tastings throughout the week to help you learn more about the craft which goes into making Britain's best beers, and of course one of the most prestigious beer competitions in the world - the **CAMRA Champion Beer of Britain** - will be judged and announced at the start of the Great British Beer Festival. Make sure you get to sample a taste of the beer given the crown in 2019!

Some amazing breweries have Brewery Bars, to serve you their great beers direct. There will also be wine, gin and coffee on offer for those looking for a little break from all things beer.

Prices: £9 for **CAMRA** Members, £11 for non-members

Tickets available in advance at www.gbbf.org.uk/tickets/ or pay on the door.

Opening times:

Tuesday 6th August - 12 noon-5pm (Trade Session)

Tuesday 6th August - 5pm-10:30pm (Public Session)

Wednesday 7th August - 12 noon-10:30pm

Thursday 8th August - 12 noon-10:30pm

Friday 9th August - 12 noon-10:30pm

Saturday 10th August - 11am-7:00pm

Last Admission: half an hour before close.

Please note that families are welcomed to the festival in the family room, however, children are not allowed on the main festival floor and must have an adult with them at all times whilst in the family room.



REBELLION OPEN WEEKEND



Over the weekend of the 29th and 30th of June, **Rebellion Brewery** held their biennial charity event and were thrilled to announce that they have beaten their target and over the two days raised in excess of the £65,000 that they raised at the previous Open Day. As before, all the money will be going to the Scannappeal local hospital charity, which is based at Wycombe Hospital.

Scannappeal focus on raising money to purchase specialist heart and cancer scanning equipment plus their most recent appeal for specialist MRI scanners. Over the last seven charity weekends **Rebellion** have raised just under £300,000 for this fantastic local hospital charity.

With the 4500 people attending, the sun shining, free beer and six bands playing over the course of the weekend, the **Rebellion** charity weekend was a great success.

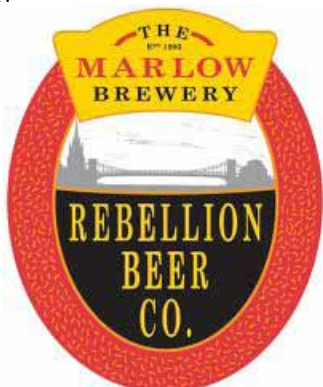
The aim of the free weekend is for **Rebellion** to show their appreciation to all their customers and, at the same time, raise as much as they can for the local hospital charity. As always, the event was entirely free, and the money was raised from customers donating whilst at the event and staff donations.

Rebellion want to take this opportunity to send a huge 'Thank You' to all those who came along (a couple of pictures of the many who came along over the two days appear top right) and gave so generously.

Thanks also to the bands who played for free. Thanks to the staff (some of whom are pictured above) and volunteers. Thanks also to Marlow based Aerial Film and Photo who took some aerial shots of the site (one of which appears on the right).

A special 'Thank You' goes to **Rebellion's** landlord, without whose help the event would not happen and to their neighbours, who had to bear with them during the inevitable disruption an event like this can cause.

We look forward to the next weekend in 2021!



THE END OF THE ROTHSCHILD ARMS?



The **Rothschild Arms** in Aston Clinton has been a pub for over 150 years, and is owned by the investment arm of **Punch/Heineken**.

The brewery want to convert the pub into several properties and use the car park land opposite to build several new houses! It seems they are not interested about how busy the pub is, that it is a televised county darts venue, plus four other darts teams, plus at least two pool teams all in local leagues, it is the place to watch sports on the big screen; SKY sports, BT

Sport etc, it is the place to meet and socialise for so many including Aston Clinton Football and Cricket teams, and many charities that it supports including Cancer Research UK, British Legion and more... It is one of the main community hubs in the village, always busy in the evenings and all day and evening at the weekends.

Stuart and his landlady wife Gemma Ladyman have done a brilliant job since they took over the pub three years ago. The pub is thriving like it never has before. It needs money spent on it as the brewery have done nothing for years.

The current tenants are willing to buy the pub and keep it as one. This offer was not accepted. Instead, twice the brewery put in an application to AVDC (the local planning authority) and twice it was refused, as in each occasion AVDC received more than 500 unique letters of objection. So the brewery decided to go to appeal. This appeal is then considered by a government inspector based in Bristol who represents the Government's Secretary of State. The inspector has the power to overrule the district council and that's what he has done. It is very difficult to reverse the appeal decision and can only be challenged by a judicial review which obviously costs money and expensive lawyers! It seems the inspector has not considered how important the pub is to so many people.

The whole decision is completely wrong and so callous. It takes no consideration of the pub being such a well used and appreciated amenity in the village and beyond. Nor does it take into account the recently made Neighbourhood plan.

It is also the last pub in the area bearing the name of the Rothschilds — a family who had huge influence in the area and have links here still.

Liz Tubb






The CROSS KEYS THAME

CAMRA
winners of Central
Southern region.

**Large range of traditional
ales and ciders on offer.**

**Open fire.
Dog friendly.
Monthly comedy night.**

**Check out our Facebook page
for up to date details.**

Tel: 01844 218202
www.crosskeysthame.co.uk





LOCAL NEWS

ASTON ROWANT

Sharp's Doom Bar, *Tring Red Kite* continue as the two ales at the **Lambert Arms**, a hotel complex off Junction 6 of the M40. A Jersey Boys tribute night will be held at the hotel on Saturday 21st September.

LocAles on the bar at the **Aston Rowant Cricket Club** - open to non-members during the cricket season include offerings from *Rebellion* or *Chiltern* plus locAles in bottles - *Chiltern* or *Chadlington* including gluten-free options. The beer festival held on 20th and 21st July was a success with 15 locAles from *Chadlington*, *Chiltern*, *Rebellion*, *West Berkshire* and *XT* available from the marquee, a South African braai (BBQ) and most importantly, a win for the 1st XI over Datchet on the Saturday!

AYLESBURY

Fuller's London Pride is one of those beers that could easily be taken for granted due to its wide availability. It is usually on at the **Bricklayers Arms** where it is always kept in great nick proving what a superb beer it is and deserving of its popularity.

The **Old Millwrights Arms** recently had a beer on which really divided opinion: *Potbelly Streaky*, a 3.6% *Blonde Ale*. Our reviewer found that its initially astringent mouth-feel and complexity on the nose really made for a great pint if one persevered, as about halfway down the flavour developed beautifully. Others, and it seems the majority of others in the pub, thought it was awful, one saying it tasted like mouthwash and questioning whether the pipe-cleaning fluid had contaminated it. Tom, ever the dutiful landlord caring for his customers and only wanting to offer real ale in top-notch condition, immediately turned the clip round and checked all was OK before allowing it to be served again. This episode speaks volumes in favour of *OMA* as one of the foremost real ale pubs in Aylesbury. It also shows just how interesting and varied real ale can be.

The **Rockwood** has reopened after a refurbishment. There are five handpumps one of which is to be devoted to cider. Three real ales were available when visited in the first week: *Wychwood Hobgoblin Gold* (4.2%), *Box Steam Tunnel Vision* (4.2%) and *Black Sheep Twiligher* (3.9%). The pub also has a good selection of bottled beers and single malts, the latter including the relatively new, award-winning Cotswolds which to this reviewer's palate was surprisingly well-balanced and full-flavoured, particularly when enjoyed after a pint of the malty, yeasty *Box Steam*.

As for the **White Swan**, which is now opening in the afternoon again its pleasing to find, guest ales of particular note recently have been *Bath Gem* and *Woodforde's Wherry*. They are having a bout of redecorating in the pub at the moment which included a ceremonial farewell to the frayed, holey (even holy) and dusty stair carpet leading up in to the pub.

BISHOPSTONE

The regeneration of the **Harrow** is progressing well with owner Sarah

Aldous seeking a suitable tenant for this 80 covers restaurant and real ale establishment.

BLEDLOW

More locAles in the last couple of months at the walker-friendly **Lions at Bledlow** including *Loose Cannon Abingdon Bridge*, *Vale Best* and *Brill Gold*, *Loddon Jester Four* and *ABC Hot Tin Roof*. They hold the occasional Quiz night, with the last being on 4th July.

BUTLERS CROSS

A recent stroll along the Ridgeway through the grounds of Chequers revealed a splendidly maturing field of copper-coloured barley, possibly destined to be mashed and brewed into a fine pint of English bitter. Some observers have suggested that the Prime Minister's country house's new incumbent will provide an unrivalled source of organic fertiliser for this and the estate's other crops but we couldn't possibly comment.

A recent visit to the **Russell Arms**, now under new management, saw a veering towards *XT Brewery* beers. *Russell Arms House Bitter* is brewed by *XT* whilst *Animal Buzzard* from the *XT* micro plant was also offered. A third hand pump had *Hot Dog* from *Gun Dog Brewery*.

CHINNOR



Chinnor Beer Festival returns for its eleventh year, being hosted in the marquee at White's Field, Chinnor (off Mill Lane) on Saturday 24th August from midday onwards. Expect thirty plus real ales, most of which will be sourced from local breweries, such as *Bond Brews*, *Chiltern*, *Lovibonds*, *Rebellion*, *Tring*, *Vale* and *XT*. The Cool Wall returns for a second year, serving craft lagers and American-style beers which are better served at a slightly lower temperature. There will also be 18 different still ciders: a few from local producers, but mostly from Somerset or Herefordshire, comprising classic cloudy scrumpies through to the ever-popular fruit ciders. There will be live music all afternoon and a Tiki bar serving a range of cocktails. Food will be served by local butcher Plested's (all from local farmers) and a free Kids Zone, comprising assault course, blue slide combo and Peppa Pig soft play will keep the kids happy whilst the adults play.

CROWELL

At the **Shepherd's Crook**, *Rebellion IPA*, *Blonde*, *Zebedee* and *Timothy Taylor Landlord* were amongst the ales noted in this delightful country pub



over the last two months, and which is a pleasant walk from nearby Chinnor. The **Crook** held a reggae night in June and had covers band Ear Candy play in July. It has also been nominated for blogsite Muddy Stilleto's Best Destination Pub in Bucks & Oxon 2019 award and we wish Gosia and her team well.

EMMINGTON

Congratulations to David and Sharon at the **Inn at Emmington** for winning back the Tug 'o War trophy from neighbours the **Crown**, Sydenham at Sydenham Fayre on 2nd June. (pictured above). Still plenty of locAles at this free house over the three pumps with the following spotted over the last two months - *Rebellion IPA*, *Chiltern Beechwood Bitter*, *Loose Cannon Abingdon Bridge* and *Bombshell*, *Loddon Hullabaloo*, *Windsor & Eton Boatman*, *Malt Summer Daze* and *Animal Whale*. There's also one real cider always available. Live music continues monthly, as does the free 'Builders' Buffet' on Friday's 4pm until 7pm. Sunday roasts are proving extremely popular, served between 12 and 3pm with bookings essential. The **Inn** has an attractive dog-friendly beer garden, including an Aunt Sally throw, perfect for supping a pint on a summer evening.

FORD

The **Dinton Hermit** is reopening in safe hands following discussions between Roger, its owner, and Paul Mitchell of *Moodies Ltd.* that already runs the **Black Boy** in Oving, the **Russell Arms** in Butler's Cross and the **Eight Bells** in Long Crendon.

GRENDON UNDERWOOD

Although the **Swan** is still fenced off, extensive works are underway and pub could reopen in the next few months

HADDENHAM

Haddenham's *Summerfest*, held on 6th July, has been hailed as one of the most successful yet. With almost perfect weather and an attendance of over 4000 the festival was a great day out for everyone.

As in recent years 130 real ales were on offer - many from local breweries but plenty from further afield too. It is always interesting to note how many people are amazed to find there are breweries on their doorstep that they have never even heard of! The ales included a range of Gluten Free and vegan friendly beers too.

Putting all 130 barrels up on the stillage on Thursday proved an interesting event. A task that normally takes two men all afternoon was achieved by teams from Risborough Rugby Club and FitLife, Haddenham, in 20 minutes! Mind you, it still took another couple of hours to tap them all giving them time to settle and be in tip top condition for Saturday.

Also available was a wide selection of very good ciders. Many of these had been personally chosen by a local cider

enthusiast and a change of supplier meant that the quality was spot on!

The soft drinks bar included some new, tasty, alcohol-free beers from the specialist *Nirvana Brewery*.

In recent years they have noticed an encouraging change in demographics and are now getting many more younger people and young families.

The usual high standard of music was maintained with top of the bill, Band Substance, playing for an extra half hour to a fantastic Glastonbury style audience (including the rain!) before rushing off to play another gig later in the evening.

All in all, a superbly enjoyable day which raised £25,000 all of which will eventually be granted to local good causes. *Haddenham Beer Festivals* are a registered charity and, so far, have raised well in excess of £300,000.

Next on the agenda is the annual *Winterfest* on December 14th.

The **Green Dragon** is currently privately owned having been bought from *Enterprise* and is on the market with Sidney Phillips, Royal Tunbridge Wells office, 01892 725900.

Hawthorn Leisure, which was founded in 2014, owns and operates the **Rose & Thistle**. The pub is currently closed as Spas and his family are returning home to Bulgaria where their daughter has been awarded a scholarship in the Bulgarian gymnastics team. Hawthorn Leisure's area manager David Elder, enquiries@hawthornleisure.com, is currently looking at recruiting a replacement tenant.

HENTON

Sharp's Doom Bar and *Tring Side Pocket for a Toad* remains the two ale line-up at the busy **Peacock** just outside the village of Chinnor.

HIGH WYCOMBE

Recent ales at the **Falcon (Wetherspoons)** have included *Brentwood Blonde* (3.8%) and *Comet Melon* (4.5%), an extra pale ale, from the *LocAle* brewery Bingham based in Ruscombe, near Twyford.

At the **Heidrun** they are still offering a flight of ales (four quarter pints of ales/ beers on their list) for £6.00. This may include craft beer on their list sometimes up to 10.0%.

IBSTONE

Two *Rebellion* ales in the form of *Blonde* and seasonal *Overshoot* were found at the **Fox** on a weeknight visit to this hotel in the Chilterns.

KINGSWOOD

The **Akeman Inn** regularly serves an excellent pint of *Dark Star Hophead*, with *Fullers London Pride* as backup.

LONG CRENDON

The **Eight Bells** serves *XT 4* and a variety of ales from *Animal*, *Rebellion*, *Tring*, *Chiltern*, *Hillfire* and *Gun Dog* from Northants. They will also be offering live music on Thursday evenings throughout August.

LOUDWATER

The **Derehams Inn** had another successful beer & cider festival (Fag & Firkin) in early July, with live music sessions and the now legendary Friday night Goat Curry. Pick of the ales on offer were *Franklins Lawless* (3.8%) and *Mucky Duck*, (a 4.0% Stout) from the *Fuzzy Duck* brewery.

LUDGERSHALL

The **Bull & Butcher** is a free house operated by brother and sister team James Hunt & Emily Davis. They have decided to stick with two regular offerings, *Greene King IPA* and *Vale Red Kite*.

MARSH GIBBON

The **Plough Inn** has *Bass* on as a staple and then all sorts such as *Church End Fallen Angel* and always *XT* and *Animal* ales. Pretty much every *Animal* pump clip ever produced is on the wall behind the bar.

MARLOW

Preparations are on-going for the **25th Marlow RBL Club Beer Festival** taking place over the forthcoming August Bank Holiday Weekend. Four real ales from the wood are being championed, alongside ales from Derbyshire, the North-West and the Central Southern region. A one-off Festival Special, *Legion Silver*, to mark their Anniversary, will also be gracing the hand-pumps. Two ales from the *Silverhouse* brewery (*Industrial Ales*) in Staveley, Derbyshire have been on offer during July namely *Glassworks IPA* (5.0%) and *Coal Face Stout* (4.8%).

The **Zero Option** has opened on the High Street and is selling a wide range of no and low (all no more than 0.5% abv) alcohol drinks including wines, spirits beers and ciders. They carry well known brand names, but their focus will be on smaller producers. In terms of UK beers and ciders they already stock products from *Big Drop*, *Drop Bear*, *Nirvana* and *Smashed*.

This pop-up shop-cum-off-licence opened for business on Saturday 27th

July and will be there until at least the end of January next year. Open seven days a week, Monday to Saturday 11am to 6pm with late night openings to be confirmed. On Sundays they will open from 11am to 4pm.

OVING

A Sunday visit to the Black Boy, a 16th century country pub, for lunch saw three locAles in *XT 4*, *Chiltern Beechwood Bitter* and *Rebellion Zebedee* and the pub pleasingly busy with diners.

POSTCOMBE

Loose Cannon Gunner's Gold remains the permanent real ale at the **England's Rose**. The pub will be holding a charity fun day on Monday August 26th between 12:00 and 16:00 for Ring The Bell - a charity dedicated to the fight against childhood cancer. There will be a BBQ, ukulele players, tombola, face painting, bric-a-brac, cake stall, raffle and more. The popular Sunday carvery continues and the beer garden is one of the largest in the area.

PRESTWOOD

Fuller's London Pride, *Dark Star Hophead* and *Malt Moderation* were the three ales found at the recently reopened **Polecat**, now under the auspices of *Oakman Inns*. The *Malt* pump clip had the number 888 on it, which denotes the fact that the brewery is 888 steps from the pub!

PRINCES RISBOROUGH

The **Whiteleaf Cross** has been serving *Timothy Taylor Landlord* on a regular basis recently.

QUAINTON

Plenty of locAles on a couple of Sunday lunchtime visits to Quainton's sole pub,

the **George & Dragon**, in May and June including *Hook Norton Gold*, *Hooky* and *Mild*, *Vale Best* and *Feel The Need*, *XT 3*, *Animal Camel* and *Gecko*. There was plenty going on with a Pizza Night being held on 30th May, a Quiz Night on 2nd June, 80s Party on 22nd June, Bingo Night on 30th June, Morris Dancing on 2nd July, Quainton History Night on 7th July followed by a Paranormal Investigation Night the same evening (the pub dates back to the 17th century), culminating in Quaintfest on 13th July.

SKIRMETT

Rebellion IPA, *Loose Cannon Longest Dray*, *Red Rock Red Rock Bitter* were the three ales on a weeknight visit to the **Frog**, a country pub in the southwest reaches of this branch's area. They offer a fish & chip takeaway service and held a beer festival in July.

STONE

A recent visit to the **Rose & Crown** found two *Willy's* beers on offer. *One Eyed Willy* is the standard pale ale whilst *Big Ben* is a new amber beer at 4.5% ABV. No brewing is now done in the pub and all beers are brewed on the *Hillfire* plant at Rabans Lane in Aylesbury. There has been a recent refurbishment of the interior whilst the large garden has ample provision for children.

TETSWORTH

At the **Old Red Lion Hanlons Firefly Bitter** and a very good *St Austell Tribute* were recent ales spotted and sampled at this roadside pub-cum-village shop in July.

TOWERSEY

Rebellion IPA, *Black Sheep Bitter* remain as the two ale line-up at the

popular *Three Horseshoes* just off the Oxfordshire Phoenix Trail.

Towersey Fringe Festival returns on Sunday 25th August at Towersey Playing Fields. Kicking off at midday, expect live music and comedy acts along with a fully licensed bar provided by *XT Brewing*.

TURVILLE

The **Bull & Butcher**, an idyllic *Brakspear* house the other side of the M40, had three of their offerings on a weeknight visit there - *Bitter*, *Oxford Gold* and excellent *Gravity*. There are deals on food throughout the week including curry and a pint for £10 on Wednesdays. Turville was famously used in exterior shots for 'The Vicar of Dibley', and older readers will recall Cobstone windmill situated opposite at the brow on the valley from the film 'Chitty Chitty Bang Bang'.

TWYFORD

The **Crown** is a free house and always has two ales on with one waiting to go on. *Eagle IPA* and *Cotleigh Brewery's* products are very popular such as *Tawny Owl* and *Styrian Wolf*. Also *Vale Red Kite* and *Otter Ales* go down well with the discerning regulars as well as *Courage Best Bitter*. In May a highly successful festival was held with eight ales from selected mostly from local breweries in aid of Alzheimer's Society and Florence Nightingale Hospice Charity.

WHITELEAF

The **Red Lion** has been serving a varied selection of ales recently. These have included: *Ninja Shark* by *Totally Brewed* and *Bitter Bully* from *Cheddar Ales*.



Le De Spencers Arms

The 'Le De' is a little flint pub, nestling in the woods at the back of Downley Common surrounded by acres of beautiful AONB land with miles of trails. Making it the ideal refreshment stop after hiking or biking. Inside you will find a warm, friendly atmosphere with an open fire, low ceilings and rustic beams. Landlady Sarah serves excellent home-cooked food alongside a great line-up of real ales and wines.

Visit our website for the menu, planned events, local walks and read some of the history of this 250 year old pub.

01494 535317
www.ledespencersarms.co.uk

ESCAPE TO THE COUNTRY



A pub walk in the countryside is celebrated one of Britain's greatest and most traditional pleasures – and the glorious scenery of the Chilterns means that our branch area has almost limitless potential for such boozy perambulations. That's wonderful in theory but, in practice, it falls far short. Getting to these romantic, picture-postcard pubs is becoming increasingly impossible via public transport. And if a responsible beer lover is forced to drive to a pub walk then the necessary abstinence inhibits much of the walk's traditional pleasure.

Previous editions of *Swan Supping* have reported how travelling to our idyllic country pubs via public transport is becoming increasingly difficult. This is especially true after the recent ruthless and pointlessly counter-productive slashing of support to off-peak bus services by our supposedly tourist-minded county council. Driving to a pub with the purpose of enjoying a country walk has several drawbacks for the drinker – many of which touch on *CAMRA's* campaigning issues.

For many people, let alone *Swan Supping* readers, one of the main attractions of a country hostelry is sampling the ale. No responsible driver should risk drink-driving. Secondly, leaving a car means walkers must

return to the same place – very boring if there are other interesting pubs within reach.

Why should access to glorious pubs and countryside be restricted to the economically advantaged who have access to a car? Also, private car use contributes to the environmental damage which may turn the green vistas of the Chilterns into parched chaparral (note some of this summer's extreme temperatures).

Fortunately, a few clusters of pubs remain within striking distance of our skeletal off-peak bus and rail routes, which are mostly limited to the 280, 300 and 800/850 routes. Using these, it's still possible to put together a small pleasant evening and weekend walk (that's until the crazed bus Beechings of Bucks sharpen their axe yet again).

This walk links Princes Risborough with Great and Little Kimble (with an option of shortening the walk to/from Askett). The starting and ending points can be reached using either the Arriva 300 or X30 bus route or Chiltern Railways services.

The route as described starts at the Kimble end because of the more flexible train options at the Risborough end but can easily be walked the other way. Just reverse the directions (try reading the article via a mirror). In the depths of winter limited stretches of the walk may get muddy but for most of the year, especially in this current summer, the ground is bone dry.

Only basic directions are provided below but the footpaths are mostly well signposted. Navigating the initial stretch between the first two pubs might benefit from reference to an Ordnance Survey map (Explorer Sheet 181). The route from the second pub onwards is so straightforward that a walker would need to be in an extremely drunken stupor to get lost.

The walk starts (or ends) with either a train or bus journey. For the railway, start at Little Kimble. The station's timetable follows no apparent logic whatsoever. The most frequent services arrive between approximately eleven o'clock at night and one in the morning. These services will be of limited use to pub walkers as these rural hostelries tend not to be pulsating, nocturnal fleshpots (although some have had their moments). Nevertheless, when there is a train, it's a quick journey from Aylesbury, Princes Risborough or High Wycombe (sometimes requiring a change).

After exiting the station, turn right along the footpath and bear away from the main road, passing between two high fences. Go through a gate into an open meadow, look for a gate on your right after about a quarter of a mile. Pass through this – joining the Aylesbury Ring – and cross the railway line. Follow the path by a hedgerow, crossing a stile and you'll emerge on to Grove Lane. Cross the road, turn left on the footpath and you'll see the **Swan** directly ahead.

The simplest route using the bus is to alight in Great Kimble at the stop (in either direction) still referred to by the bus company as the **Bernard Arms**, despite the pub having been closed for six years. St. Nicholas's Church is also a recognisable waymark.

On disembarking the bus, the disgracefully derelict state of the **Bernard Arms** is impossible to miss. The closest pub to the Chequers estate, the **Bernard Arms** was regularly visited by Prime Ministers and foreign dignitaries for many years. Awaiting demolition for private housing, it now stands as a sad monument to the neglect of the pub industry by at least two of the most recent occupants of Chequers. Perhaps the new tenant, rumoured to be fond of the odd drink, might see in the tattered shell of the building a reflection of the damage caused by his predecessors' failure to protect the traditional pub as a cornerstone of British culture? On the other hand, he might interpret the broken windows, stripped roof tiles and interior graffiti merely as evidence of a particularly exuberant Bullingdon Club night out.

Turn down Church Lane by St. Nicholas's Church. Carry on for half a mile to arrive at the **Swan**. The **Swan** (pictured top left) is a family-owned and run village local. It's usually at its busiest on Sunday lunchtimes so if there's a plan to walk off a roast dinner then it could be advisable to book. In the summer there's plenty of space to enjoy a drink outside on the village green. Mick Caffrey, the landlord, embraces the philosophy of LocAle, frequently purchasing directly from local breweries. Consequently, the range of real ale can change from day to day.

Tring Moongazing is the most regularly seen ale, a favourite of the folk musicians who periodically strum and toot in the bar. The refreshing *Tring Sidepocket for a Toad* often makes an appearance as do brews from the *Hillfire* brewery in Aylesbury. Also available are bottles of *Grover's* cider, produced in an orchard only a few hundred yards away.

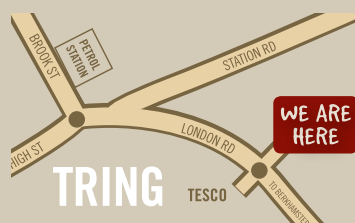


AWARD WINNING BEERS BREWED IN HERTFORDSHIRE

For 2019 our Monthly Specials will be raising funds and awareness for Gaddesden Row Riding for the Disabled



VISIT OUR BREWERY SHOP



- DRAUGHT & BOTTLED BEER TO TAKEAWAY
- LIMITED EDITION BREWS
- EXPERIMENTAL BREWS
- T-SHIRTS & GOODIES
- GIFT VOUCHERS
- GOLDEN TOAD MEMBERSHIP
- PICKLES & PRESERVES
- TOUR BOOKINGS



Dunsley Farm, London Rd, Tring HP23 6HA

01442 890721 www.tringbrewery.co.uk



Y (WHILE YOU STILL CAN!)



Leaving the **Swan**, cross the road and turn right, eventually following a roadside footpath to a stile bounding a very large field. A path through arable crops leads towards a single tree and a pair of stiles bracketing the railway. Cross the railway again and bear right towards a gate. Continue through a meadow parallel to the railway until reaching a gate.

The village of Askett is visible on the far side of a large piece of pasture land. Head slightly left across the paddock towards fence at the far side – and a grassed path. Follow this between two fences then continue ahead over a couple more stiles and a field, eventually passing by the side of a house to emerge on to the main road in Askett. Turn left and you reach the **Three Crowns** almost immediately.

The **Three Crowns** is a pub that specialises in restaurant quality food, although it does serve real ale at the main bar. But to cater for drinkers and casual diners, a couple of years ago it converted some outbuildings into the **Stable Bar** (pictured above). Effectively Askett's own micro-pub, the bar usually offers two real ales, most regularly *Shepherd Neame Spitfire* and a LocAle – recently *Vale Best*. It's pleasant, modern and comfortable and is decorated with the work of local artists.

It's easy to start or end the walk at Askett. The 300 bus route is only a couple of hundred yards away on the main A4010 and Monk's Risborough station is a ten-minute walk along Crowbrook Road (passing the long lost **White Cross**).

Next stop is the village of Whiteleaf. If you have a map, there's a way of navigating there through the fields but if you're thirsty for another pint it's worth putting up with a short walk along the busy main road to get there quickly.

From the **Stable Bar**, walk towards the A4010 Askett roundabout (you'll hear it) but cut the corner off and head down Letter Box Lane. This joins the main road for a stretch of couple of hundred yards until its junction with the Holloway (signposted Whiteleaf). Walk up the lane for five minutes, turn right and you're soon at the **Red Lion** (pictured below).

Located on a grassy bank on a narrow lane and reached by a flight of steps through the garden, the Red Lion dates from the 17th century. The core of the pub is timelessly traditional, with flagstoned floors, rustic furniture, a large fireplace and plenty of nooks and crannies. A sympathetic modern extension has added a larger restaurant and modern toilets.

There are usually three real ales available, often featuring *Brakspear's Bitter* and *Chiltern* on occasion — the pub regularly serves the brewery's very limited-edition *Kop Hill Ale* in September to celebrate the nearby vintage car event. Recently the pub has been offering a selection of unusual real ales from across the country.

The remainder of the walk is very straightforward. Continue along the road through Whiteleaf until it joins Peter's Lane, then cross and follow the Upper Icknield Way, a wide and mostly level track shaded by trees, on the shoulder of the Chiltern escarpment. Walk for around a mile, edging the outskirts of Princes Risborough and cross the first road, continuing over an access road for buses to the secondary school. The path eventually descends to the A4010. Turn right and cross the road, taking a left turn down Poppy Road – and the site of another dead (and demolished) pub, the **Black Prince**.

On reaching the T-junction at the end of Poppy Road, the **Bird in Hand** (pictured top right) is on your right. The pub has been a popular real ale destination in the past, although it changed hands quite frequently in recent years while operated by *Greene King*. It has recently been sold to *Oak Taverns* (who are responsible for the **Rising Sun** in Haddenham and **Cross Keys** in Thame) with the aim of



restoring its status as a real ale destination pub, as well as a busy community local.

It's an L-shaped, one-roomed pub with an attractive garden at the side and rear – a restful location to put up a walker's weary feet. LocAles feature predominantly with *Chiltern Beechwood* and *Thame Hoppiness* regularly appearing. There's often a selection from *XT* brewery along with one or two other interesting ales from further afield to slake the walker's thirst.

When you've had your fill of ale, Princes Risborough station is a five-minute walk downhill and the 300 and X30 buses run along the nearby main road.

A word of caution on opening times: while the **Bird in Hand** is open late every evening, it isn't open every lunchtime. Similarly, don't assume the country pubs keep predictable hours. If you plan on arriving at one of the country pubs at an off-peak time or even at any time it may be worth phoning ahead (or checking online if you're trusting). At least one of the pubs closes all Monday and the country pubs often shut up shop early on Sunday evenings (and other evenings if it's quiet).

Charlie Mackle



**ROYAL
STANDARD
AT
WOOBURN COMMON**

Wooburn Common Road,
Wooburn Common,
High Wycombe,
Bucks. HP10 0JS
Telephone: 01628 521121
www.theroyalstandard.biz

*Kirsten, Mark and Darren welcome you to the
Royal Standard at Wooburn Common*

*The place to visit
for good food and
real ale!*

For further details check out our website
www.theroyalstandard.biz
Open all day every day



LOCAL BREWERY NEWS

Fisher's Brewery

Fisher's celebrated their second birthday at the end of July with a beer festival with all their beers available plus some from other local breweries as well as DJ's, live music and lots of street food across two days.



Their latest brews are *Oat Pale* (5.5%), a cloudy, oat heavy, fruity tasting pale ale and *Kettle Sour* (4.0%), a beer in the style of a Flanders red ale with a big dry hop flavour which has one hell of a punch.

Fisher's will be showing all of England's warm up and group matches for the Rugby World Cup 2019 in Japan.

Rebellion Brewery

Rebellion held a very successful Open Weekend in July and a full report can be found on page 4.

Their monthly special beer for August and September are *Sonic Boom* (4.2%) which is amber and fruity, and *Nose Dive* (4.2%) which is described as golden and crisp.

Blonde is still their summer seasonal and autumn's seasonal is yet to be confirmed.

Tring Brewery

Low in alcohol but plenty of flavour describes Tring's amber special offering *Jimbo Table Beer*. The use of Dextrin malt provides body and the platform to balance out potent Australian Galaxy hops.



Following the Plastic Free July campaign, **Tring Brewery** have released brand new refillable growlers. They are stainless steel and emblazoned with their very own Mr. Toad and are refillable containers which will keep your beer cool and eco-conscious. One and two litre sizes are available to purchase now at the

brewery shop, with a 10 pence per litre discount offered on refills forever.



Vale Brewery

A number of new brews are on the horizon from **Vale**, to be enjoyed throughout the summer months. These include:-



SPS (4.2%), a red rye beer with all English hops. Toffee malt flavour, fresh hop aromas with hints of lime, peach and orange.

Field of Dreams (3.9%), pale gold with strong hints of black currant and spice.

Tri Line (4.2%), tawny in colour with soft malt mouth feel. Intense citrus hops give a strong aroma of orange and lemon.

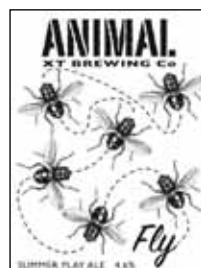


Brewery conditioned ales are now available. This is the same great beer without the fuss - easy to pour and store. Full range in stock now!

XT Brewery

XT have developed a new specialists range to meet demand for more unusual and higher strength beers. These new specials will be sold to pubs who like something a little bit different and the first of these new brews is the *XT Saison* (4.9%). A traditional beer originally from Wallonia in Belgium, but this time given the **XT** treatment and brewed with all kiwi hops to kick off August. Brewed with 10% wheat and 10% rye, fermented with a semi-wild saison yeast, *XT Saison* is full of funky fruit flavours and spicy, peppery, floral notes. Perfect for the warm weather and for someone who wants something a little bit different.

And the **Animals** have been busy too with a brace of new beers for the summer:-



Fly (4.6%). Everyone's favourite summer **Animal**... maybe. For in the words of William Blake 'For I dance and drink and sing'. This 'Little Fly' with the highest alpha hops they could get our hands on will definitely make you dance and sing. Packed to the wings with Apollo, Simcoe and Admiral expect bold herbal, pine and grapefruit flavours to swarm your pallet. For the hop head, and those who like things a little bit summery, it will leave them 'A happy fly'.

Hummingbird (4.6%). Delicate floral flavours from Cascade and Motueka flutter on the pallet and are paired with notes of honey and nectar thanks to a subtle splattering of melanoidan malt and generous dry hopping. Perfect beer for the summer and the beer garden.

XT have started a new season of sports sponsorship - again helping the Long Crendon Football club with their continued sporting triumphs in the Hellenic League.



They will also be sponsors of the Towersey Music Festival and the Towersey Fringe over the August Bank Holiday weekend.

THE KING'S HEAD
EST 1455

CHILTERN BREWERY

The Chiltern Brewery's historic courtyard inn at
The King's Head, Aylesbury

Fine English Real Ales & Craft Keg Beers from our Brewery
Guest Craft Beers, Ciders & Stouts
Fine Wines from the Rothschild Estate

NEW LUNCH SERVED DAILY
Evening food on Wednesdays, Thursdays,
Fridays & Saturdays

The King's Head, Market Square, Aylesbury, HP20 2RW
01296 718812 www.kingsheadaylesbury.co.uk

[@kings_head](https://twitter.com/kings_head) [/kingsheadaylesbury](https://facebook.com/kingsheadaylesbury) [kingsheadaylesbury](https://instagram.com/kingsheadaylesbury)

UNIQUE! THAT'S THE KOP HILL CLIMB FESTIVAL!



Unique is a much abused word. Used properly, it admits no shades of grey. Something is either unique or isn't. The Kop Hill Climb Festival, celebrating the 10th Anniversary of its revival this September on the weekend of the 21st and 22nd, can justifiably lay claim to being so described.

Imagine a warm late Summer's day in a beautiful hillside setting in leafy Buckinghamshire. You are surrounded by hundreds of classic cars and motorcycles, dozens of exhibitors and over twenty food stalls offering a huge range of culinary delights. The family has wandered off to cheer on the young engineers of tomorrow at the Soapbox Challenge, enjoy the period funfair and then listen to the bands live on stage. You head for the beer tent to sample Kop Hill Climb's own bitter, lovingly created by the **Chiltern Brewery**. This is the quintessentially English, slightly bonkers but totally compelling Kop Hill Climb experience,

a heady brew of all those things which typify an idyllic day. Some 18,000 people drank it all in last year. If you have been, then you know. If you haven't been, then you must.

Having been first run in 1910, KHC is one of the earliest hill climb events in the country. Revived in 2009, it is entirely volunteer-run with all proceeds donated to local projects and good causes; to date, the total monies raised exceed £630,000.

Every year provides something new and interesting. This year, KHCF celebrates 60 years of the Mini with a cavalcade of them up the hill led by the legendary Paddy Hopkirk, the winner of the 1964 Monte Carlo Rally. Alongside them in the paddock will be the coach from the Italian Job movie, itself amazingly fifty years old this year. Other anniversaries being marked are 110 years of Bugatti with a line-up of cars from all over Europe including the unfairly notorious Cordon Bleu, the centenary of the Talbot marque and 60 years of Marcos. Also new for 2019 is the Engineering Village, a gathering of local automotive craftsmen demonstrating their skills in restoring classic cars and motorbikes. Yesteryear is

deafeningly present with a collection of Edwardian aero-engined flame-throwing monsters such as the 24 litre Napier-Railton. Watch it explode from the start-line. Modern exotics and supercars will also feature to create dreams for boys of all ages.

You can find more of the flavour of the event on www.kophillclimb.org.uk. If you would like to read more about the Kop story, select the 'shop' link on the landing page and buy a copy of 'The Kop Hill Climb: an appreciation' (pictured). It makes a great birthday gift for any petrol-head and adds to the donations KHCF makes.

You will receive a warm welcome from the KHCF volunteers. Go along and try the brew for yourself!



is



THE CHILTERN BREWERY

Brewery tours
every Saturday
and select
Fridays



We are now open later during the week
– swing by after work for your fresh draught beer!

Monday - 10am to 5pm
Tuesday, Wednesday and Thursday - 10am to 6pm
Friday - 9am to 7pm Saturday - 9am to 5pm
Sunday - Closed

Click & Collect or Buy Online

www.chilternbrewery.co.uk





Come visit us at the
**GREAT XT
TAPROOM**

9.30 - 5.00 MONDAY to TUESDAY

9.30 - 6.00 WEDNESDAY to SATURDAY

Taste the beers - Tour the brewery
Buy our fresh & bottled beers



XT Brewery, Notley Farm, Long Crendon, Bucks.
HP18 9ER 01844 208 310 xtbrewing.com



Main Road, Naphill, HP14 4QA

Tel: 01494 562210



Family Friendly • Dog Friendly • Good Beer Guide since 2008 • Real Fires • Excellent smoking area & gardens

“Great locals and great staff for a great atmosphere!”

**Award Winning
Traditional British Pub**

“Choose real life or Wheel Life!”

A quirky pub - it's bigger than it looks!
With 2 bars and a function/dining area.

Excellent homemade food - allergies catered for.



www.thewheelnaphill.com info@thewheelnaphill.com



THE CASKITEERS - PART SEVEN

One drizzly morning Jacob stroked his beard impatiently as he watched the delivery driver from beer ingredient supplier, *Couldn't Organise*, work his way methodically down Shackney High Street's twenty-eight microbreweries. Being exceptionally tight-fisted, Jacob had failed to order enough malt and hops and the brewery was idle.

'You lumpen proletarian, why didn't you hot-foot it straight to my door once you'd arrived in the vicinity?' Jacob ranted to the delivery man when he eventually arrived.

'Strict delivery route, guvnor,' he replied. 'Why should you be special? Now, if you'd paid the premium £100 a sack *swift delivery* fee.' He produced a credit card machine from his pocket.

'You ignoramus, we will *always* be special. Surely you realise from our microbrewery's witty name that my chum Harry and I are alumni of Eton College,' Jacob preened, slicking back his hair while Harry joined him at the door furiously creasing his brand-new lumberjack shirt.

'Like every other craft beer bar on the street?' the man asked. 'Anyhow I thought *Eaten Trifles* meant you had some weird custard and jelly flavour beer with hundreds and thousands in it. Like *Sligo Sago* up the road who do that Irish sago pudding stout?'

'Hundreds and thousands! Jelly and custard beer! Memories of matron!' Harry rhapsodised deliriously. 'Bravo!'

'I care not to take lessons from the Irish,' Jacob sniffed. 'We're so thoroughly British in this brewery that we both possess double-barrelled French middle names.'

'Excuse me, I'm overdue at **Bertie's Backstop**.' The delivery driver barged through the entrance, knocking both hipsters over with a sack of malt.

This incident greatly irked Jacob. *Eaten Trifles* had so far been a merely moderately successful Shackney craft beer brewery. **Bertie's Backstop** was the local hipsters' most hyped-up hangout, praised every week in *Time Off* and relentlessly posted on *Instamatic*. Worse, Bertie Bullion, its proprietor, was a despised Old Whackamist – a graduate of eye-wateringly expensive Whackchester School, an Alma mater Jacob considered inferior to his own. Under his carefully cultivated hipster exterior, Jacob raged. He'd show them. He'd rip up the settled order of Shackney craft beer with its mutual brewing collaborations and tap takeovers. He would do something radical – even if he hadn't a clue what the consequences would be.

'Excuse me, dear operative. We have no more need of your wares. Remove them from the premises forthwith,' Jacob instructed the delivery man.

'You're asking me to brew a beer without any barley or hops?' Ruthie the brewer asked incredulously when Jacob briefed her about his plan. 'That's what beer's made of!'

'Tsk, such negativity,' Jacob bristled.

'You might not want to buy any more from *Couldn't Organise* but you'll need to settle the bill. We haven't paid for six months.' She pointed to a stack of red-inked letters covered in cobwebs in Jacob's in-tray.

'He can whistle for his money,' Jacob declared. 'My family didn't get where it is today by settling bills. When they see that we can do without them far better than they can manage without us then they'll soon write it off.'

Harry wrinkled his forehead, as if attempting to think. 'Correct me if I'm wrong but isn't water an ingredient in beer?'

'Is it?' Jacob asked Ruthie.

She was tempted to shake her head but nodded in affirmation.

'Surely we don't use the same tap water as every other brewpub?' Jacob exclaimed. 'This cannot do.'

'You expects us to collect rainwater off our roof with all that London pollution in it? Or dig our own well?' Ruthie asked.

'A well! How rustic and charming!' Harry enthused.

'We could collect the money people threw down it!' Jacob suggested.

'Ach, if yous is serious I'll can phone ma cousin Aberdeen Angus. He nicked a pneumatic drill when he was last released from prison. He's been drilling pot holes in roads wi' it to wreck posh people's cars,' Ruthie said.

'Proceed forthwith! Meanwhile, let's make our IPA without any of that blasted man's ingredients. No – what-do-you-call-it? – malt.'

'No jumps either,' Harry added.

'Jumps?' Ruthie puzzled. 'You mean hops?'

'Oh, blow. If I keep thinking of little bunny rabbits I'll remember,' Harry resolved.

'Well, ye's might be in luck because when was in the Gorbals, I did some wee work for an under the radar outfit using tattie peelings and haggis offcuts,' Ruthie said.

'Use avocados. They're so cheap that Harry smashes them all over his toast,' Jacob suggested. 'Wait! Let's think etymologically. What does IPA stand for?'

'Identikit Pint Alert!', my mate Tarqs told me,' Harry said.

'India Pale Ale,' Ruthie corrected him, impatiently.

'Ah, so to be more authentic than the competition we must make it from Indian ingredients!' Harry said.

'It's because it was exported to...' Ruthie tried to correct him but by then it was too late.

The 'IPA' was ready a couple of days later – brewed from rice semi-fermented in stagnant rainwater, coloured with infusions of PG Tips and given a desperate attempt at spiciness by stirring in a catering pack of garam masala.

It looked and smelled so revolting that no-one dared taste it. That didn't stop Jacob and Harry setting up a sampling station outside *Eaten Trifles* and trying to lure unsuspecting punters inside their craft beer bar.

Given the foul liquid's lack of resemblance to even

the murkiest, unfiltered IPA of their competitors, the Shackney hipsters turned their pierced noses up in disgust. Meanwhile, Aberdeen Angus had started drilling a well in the cellar.

'Where's your optimism? Where's your can-do attitude?' Jacob shouted to one refusenik on the pavement.

'I'm optimistic I can get a drinkable pint next door,' the hipster replied.

Another shouted: 'Thankfully, what I *can* do is walk past your microbrewery and its revolting, over-priced excuse for beer.'

After several hours, a red-faced, clean-shaven middle-aged man and his blue-rinsed, pearl-necklace wearing wife strolled past – clearly lost in this East London hipster zone. 'Young man, we were looking for the **Old Measly Sow** gastropub but it seems we're hopelessly lost and it's made me very angry,' the man said.

'I'll give you directions if you buy my prizewinning, genuine IPA,' Jacob replied mellifluously. '£10 per half pint.'

'He speaks like a splendidly trustworthy cove!' The man handed over a £20 note.

On sampling the 'beer', their mouths puckered in pain. The woman vomited discreetly over a Boris bike then said: 'It's...er...lovely. Well, it must be if you say it won a prize. Do you have a toilet inside?'

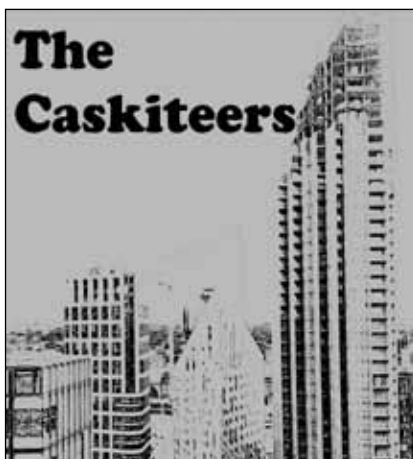
'Only for regular customers,' Jacob said as the woman collapsed, writhing on the floor, holding her stomach. 'Move to the side, woman, you'll put off passing trade.'

'Don't worry. Must have been that baguette she ate earlier,' the man reassured Jacob.

Suddenly, a huge crash rang out inside the brewery. Jacob rushed through the door to see Harry and Ruthie staring at a gaping hole where their brewery used to be. At the bottom of a cavernous hole was their ruined equipment, Aberdeen Angus and his drill – all lying on a railway line.

A police van pulled up outside the microbrewery. A detective rushed in. 'We need to interview someone about the first recorded instance of the Central Line being melted by rancid IPA.'

Charlie Mackle



Branch Diary

Everybody welcome to all socials and meetings!

August

Tuesday 6th to Saturday 10th GBBF

The Great British Beer Festival is one of the biggest, most exciting and well-known events in the beer and cider world. It brings hundreds of real ales, international beers and real ciders and perries under the iconic Olympia roof.

Thursday 8th GREAT BRITISH BEER FESTIVAL SOCIAL

6.00pm, GBBF, Olympia, London

We hold a branch social every year at this awe inspiring event and are very mindful that meeting up with people at the festival can be a very hit and miss affair. We therefore suggest meeting by the Information and Membership Stand (R1 in your GBBF programme) on the hour, every hour from 6pm to 9pm. Hopefully stories of people missing each other constantly as they both walk round the festival in a clockwise fashion won't occur this time around!

Wednesday 14th REOPENED PUB SOCIAL

7.00pm Rockwood, Aylesbury. Newly refurbished with new people in charge and some interesting real ales and cider.

Saturday 24th BEER FESTIVAL SOCIAL

12 noon Royal British Legion, Marlow.

This will be their 25th Beer Festival and four real ales from the wood are being offered, alongside ales from Derbyshire, the North-West and the

Central Southern region. A one-off Festival Special, *Legion Silver*, to mark their Anniversary, will also be available.

September

Wednesday 4th EARLY EVENING SOCIAL

6.00pm Mad Squirrel Tap & Bottleshop, High Wycombe

Monday 9th BRANCH MEETING

7.00pm Bird in Hand, Princes Risborough

Wednesday 18th EARLY EVENING SOCIAL

6.00pm Old Millwrights Arms, Aylesbury

November

Friday 1st/Saturday 2nd AYLESBURY BEER FESTIVAL

26th annual beer festival raising money for the Florence Nightingale Hospice Charity held at the Sir Henry Floyd Grammar School, HP21 7QY

Further details can be found on
www.avw.camra.org.uk and facebook

**CATCH UP DURING BRANCH SOCIALS:-
PHONE 0792 215 8971**

DON'T DRINK AND DRIVE!

All these Aylesbury Vale & Wycombe Branch socials are easily accessible using public transport!



Citizens Advice consumer helpline on 03454 04 05 06

Buckinghamshire Trading Standards

County Hall, Aylesbury, Buckinghamshire HP20 1UP

Oxfordshire County Council Trading Standards Service

Graham Hill House, Electric Avenue, Ferry Hinksey Road
Oxford OX2 0BY

e: trading.standards@oxfordshire.gov.uk

DON'T MISS OUT!

Keep up with the latest local pub news, be given beer festival information plus the latest social details, please join our e-mailing list by going to:-

www.avw.camra.org.uk

Swan Supping

Swan Supping is distributed free of charge to pubs in the branch area.

Circulation 6000 copies.

Edited by David Roe

Editorial Address : 16 Jasmine Close, Aylesbury, Bucks HP21 9SH.

Tel : 01296 484551 E-Mail : editor@avw.camra.org.uk

Advertising rates are from :- 1/4 page £60, 1/2 page £120, full page £200.

Block bookings for six issues available. We can even create the advert for you at no extra charge! All bookings are taken as run-of-paper. You can now pay for a year of adverts in advance and avoid any possible price increases!

Please make all cheques payable to **CAMRA AV & W**.

Copy deadline for next issue (due out 30th September) is 12th September 2019.

Subscriptions :- *Swan Supping* is distributed to over 250 pubs and many other locations in our area but if you would prefer to receive your copy by post we can mail it to you immediately it is published. All you have to do is send £1.50 for each edition you wish to receive to the Editor at the address above (please make all cheques payable to **CAMRA AV & W**) and leave the rest to us! This applies to single copies to UK addresses only. We can mail overseas, but the price will vary depending on the country to which it is to be delivered. Remember that all issues of *Swan Supping* can be downloaded from our website (avw.camra.org.uk).

©Aylesbury Vale & Wycombe CAMRA 2019

Opinions expressed in *Swan Supping* are not necessarily those of the editor, or the *Campaign for Real Ale*.

Acceptance of an advertisement in *Swan Supping* by a pub or its availability there does not guarantee CAMRA approval.

Published by the Aylesbury Vale & Wycombe branch of the *Campaign for Real Ale* and printed by *Pelican Print*, Unit 14, Aylesbury Vale Industrial Park, Farmborough Close, Aylesbury, Bucks. HP20 1DQ Tel: 01296 422100

Join up, join in,
join the campaign

From as little as
£26.50*
a year. That's less than a pint a month!

Includes
£30
Real Ale
Cider & Berry
Vouchers



Campaign
for
Real Ale

Protect the traditions of great British pubs and everything that goes with them by joining today at www.camra.org.uk/joinup

Or enter your details and complete the Direct Debit form below and you will receive 15 months membership for the price of 12 and save £2 on your membership subscription

Alternatively you can send a cheque payable to CAMRA Ltd with your completed form, visit www.camra.org.uk/joinup, or call 01727 798440. *All forms should be addressed to Membership Department, CAMRA, 230 Hatfield Road, St Albans, AL1 4LW.

Your details:

Title Surname

Forename(s)

Date of Birth (dd/mm/yyyy)

Address

Postcode

Email address

Daytime Tel

Partner's Details (if Joint Membership)

Title Surname

Forename(s)

Date of Birth (dd/mm/yyyy)

Single Membership (UK) £26.50 ☐ £28.50 ☐

Under 26 Membership £18 ☐ £20 ☐

Joint Membership £31.50 ☐ £33.50 ☐

(At the same address)

Joint Under 26 Membership £23 ☐ £25 ☐

Please indicate whether you wish to receive What's Brewing and BEER by email OR post:

What's Brewing By Email ☐ By Post ☐

BEER By Email ☐ By Post ☐

Concessionary rates are available only for Under 26 Memberships.

I wish to join the Campaign for Real Ale, and agree to abide by the Memorandum and Articles of Association which can be found on our website.

Signed

Date

Applications will be processed within 21 days.

Instruction to your Bank or Building Society to pay by Direct Debit

Please fill in the whole form using a ball point pen and send to: Campaign for Real Ale Ltd, 230 Hatfield Road St. Albans, Herts AL1 4LW

Name and full postal address of your Bank or Building Society

To the Manager

Bank or Building Society

Address

Postcode

Name(s) of Account Holder

Bank or Building Society Account Number

Branch Sort Code

Reference

FOR CAMRA OFFICIAL USE ONLY

Membership Number

Name

Postcode

Instructions to your Bank or Building Society

Please pay Campaign for Real Ale Limited Direct Debits from the account detailed on this instruction subject to the safeguards assured by the Direct Debit Guarantee. I understand that this instruction may remain with Campaign for Real Ale Limited and, if so, will be passed electronically to my Bank/Building Society.

Signature(s)

Date

Banks and Building Societies may not accept Direct Debit Instructions for some types of account.

This Guarantee should be detached and retained by the payer.

The Direct Debit Guarantee

• This Guarantee is offered by all banks and building societies that accept instructions to pay by Direct Debit.

• If there are any changes to the amount, date or frequency of your Direct Debit The Campaign for Real Ale Ltd will notify you to working in advance of your account being debited or as otherwise agreed. If you request The Campaign for Real Ale Ltd to collect a payment, confirmation of the amount and date will be given to you at the time of the request.

• If an error is made in the payment of your Direct Debit by The Campaign for Real Ale Ltd or your bank or building society, you are entitled to a full and immediate refund of the amount paid from your bank or building society.

• If you receive a refund you are not entitled to, you must pay it back when The Campaign for Real Ale Ltd asks you to.

• You can cancel a Direct Debit at any time by simply contacting your bank or building society. Written confirmation may be required. Please also notify us.



10 great reasons to join CAMRA

1 CAMPAIGN for great beer, cider and perry	2 Become a BEER EXPERT
3 Enjoy CAMRA BEER FESTIVALS in front of or behind the bar	4 GET INVOLVED and make new friends
5 Save YOUR LOCAL	6 Find the BEST PUBS IN BRITAIN
7 Get great VALUE FOR MONEY	8 DISCOVER pub heritage and the great outdoors
9 Enjoy great HEALTH BENEFITS (really!)	10 HAVE YOUR SAY

What's yours?

Discover your reason
and join the campaign today:

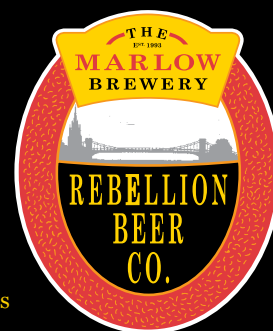
www.camra.org.uk/10reasons



PUB QUALITY BEER

...AT HOME

Drink Rebellion cask ale
at home, fresh from the
brewery shop



- Fresh beer, ready to drink
- 1 litre bottles up to 72 pint barrels
- Membership club with benefits including 10% OFF beer
- Fresh cider
- Local produce
- Over 300 worldwide wines
- Free glass hire

Shop opening hours:
Mon-Sat 8am-7pm

Call **01628 476594**

Or visit our website:

www.rebellionbeer.co.uk



@RebellionBeer



RebellionBeerCo



Rebellion Beer Co. Ltd. Bencombe Farm, Marlow Bottom, SL7 3LT

Over 35 real ales to try

Plus: ciders, perries, Gin Festival, hot food & live music

Friday 1st November &
Saturday 2nd November

at Sir Henry Floyd Grammar
School, HP21 7QY

Book online at:

fnhospice.org.uk/beerfestival



Registered Charity No. 1119499

Keeping it real to
support hospice care
in Buckinghamshire



The Shepherd's Crook
PUB AND RESTAURANT

Positioned in the heart of Crowell, Chinnor, we are a Traditional British Free House, with Polish Influences. Not being tied to any pub chain means we are delighted to offer a wide selection of the finest Beers, Ales, Wines and Spirits including locally brewed and independent products that you are less likely to find elsewhere. Of course we also stock the national brands you know and love.

REGULAR LIVE MUSIC NIGHTS - SUMMER BBQS - FAMILY & DOG FRIENDLY
OVER 40 GINS - SHARING PLATTERS TO SMALL NIBBLES - GREAT SELECTION OF WINE - PRIVATE FUNCTIONS

1ST JUNE Mexican Night	8TH JUNE Indian Night	15TH JUNE Arabic Night	22ND JUNE "Sun Splash" Reggae Night	29TH JUNE Chinese Night
6TH JULY BBQ	13TH JULY Live Music "For Charity"	20TH JULY Spanish Night	SEE OUR FACEBOOK PAGE FOR FURTHER EVENT DETAILS	

SUNDAY LUNCH 12-4PM - SELECTION OF ROASTS - BOOKING ADVISABLE

EVERY WEDNESDAY

Filly Hot Dog
Day

EVERY THURSDAY

Burger Day

EVERY FRIDAY

Fish Day

Call: **01844 355266**

www.the-shepherds-crook.co.uk



The Shepherds Crook, The Green, Crowell, Chinnor, Oxfordshire, OX39 4RR

EVERY MONTH WE FEATURE 36 DIFFERENT
CASK ALES FROM AROUND THE UK



IN 2018 WE FEATURED OVER 400 CASK ALES FROM OVER 130 DIFFERENT BREWERIES

SOME OF OUR ALL YEAR ROUND CASK ALES



CALL US NOW ON 01296 630013 OR VISIT WWW.DAYLADRINKS.CO.UK