

# Cask Calling



Issue 1 Spring/Summer 2025

## Swan Supping

FREE  
Campaign for Real Ale  
Aylesbury Vale & Wycombe Branch  
Issue 1  
Spring 1997

**Launch Issue**

Welcome to the first issue of a new publication for pub-goers in the Aylesbury Vale and Wycombe area. It will be published quarterly and will be available free of charge from selected local pubs. We will feature local news, views and views about pubs and traditional beers. We would welcome your comments on this and any other issue (E-mail: [swansupping@camra.org.uk](mailto:swansupping@camra.org.uk)). If you have any local news or other contributions, we would be pleased to see them in this issue.

**Next Issue: Start Here**

CAMRA is an independent consumer campaign for real ale. It is a national organisation that works to protect the interests of real ale drinkers and to promote the production and sale of real ale. CAMRA is a registered charity and is a member of the European Consumer Organisation (EUFORA).

**Thirsted Pub Start?**

The Drink Rates of Local Beer

50,000 members can't be wrong! Join CAMRA today!

See Page 2 for details of our award winning Local Beer Guide See page 3!

Advertising in Swan Supping can cost as little as £5

### Swan Supping

FREE  
Campaign for Real Ale  
Aylesbury Vale & Wycombe Branch  
Issue 1  
Dec 1997

**THIRTY YEARS ON!**

It's time to celebrate the 30th anniversary of the first issue of Swan Supping. The magazine has grown from a small local publication to a national one, and it's a testament to the support of our readers and the dedication of our staff.

**CAMRA VICTORY IN EUROPE**

Our latest award for the best real ale in Europe has been awarded to the Aylesbury Vale & Wycombe Branch. This is a great achievement and a testament to the quality of the real ale produced in the area.

**IT'S CHRISTMAS!**

VALLEY BREWERY of Haddenham is the best place to get all your take-home beer, wine and cider for the festive season!

**Brill Beer!**

VALLEY BREWERY of Haddenham is the best place to get all your take-home beer, wine and cider for the festive season!

### Swan Supping

FREE  
Campaign for Real Ale  
Aylesbury Vale & Wycombe Branch  
Issue 1  
Dec 1997

**NOW WE ARE 100,000!**

Our membership has grown to over 100,000 members, and we are proud to represent the interests of real ale drinkers across the country.

**Brill Beer!**

VALLEY BREWERY of Haddenham is the best place to get all your take-home beer, wine and cider for the festive season!

### Swan Supping

FREE  
Campaign for Real Ale  
Aylesbury Vale & Wycombe Branch  
Issue 1  
Dec 1997 / Jan 1998

**OVER 5000!**

A brand new Brewery! See Page 8

Newsletter of the Aylesbury Vale & Wycombe Branch of CAMRA  
[www.swansupping.org.uk](http://www.swansupping.org.uk) Est. Readership 6000

### Swan Supping

FREE  
Campaign for Real Ale  
Issue 136 Feb / Mar 2020

The Cross Keys in Thame Was lit up for Christmas See Local News

Newsletter of the Aylesbury Vale & Wycombe Branch of CAMRA  
[www.camra.org.uk](http://www.camra.org.uk) Est. Readership 6000

With cheers & thanks to Swan Supping

### Swan Supping

FREE  
Campaign for Real Ale  
Issue 140 Spring 2024

The Buckinghamshire Branch of CAMRA celebrates fifty years of campaigning! See Report on Page 4

Newsletter of the Aylesbury Vale & Wycombe Branch of CAMRA  
[www.camra.org.uk](http://www.camra.org.uk) Est. Readership 6000

### Swan Supping

FREE  
Campaign for Real Ale  
Issue 139 Summer 2022

THE BELL HOTEL

The Bell Hotel in Thame is due to reopen under new management on Friday 27th of May! See Local News

Newsletter of the Aylesbury Vale & Wycombe Branch of CAMRA  
[www.camra.org.uk](http://www.camra.org.uk) Est. Readership 6000

### Swan Supping

FREE  
Campaign for Real Ale  
Issue 138 Spring 2023

The Bird in Hand, Princes Risborough wins our coveted Pub of the Year Award! See Page 4

Newsletter of the Aylesbury Vale & Wycombe Branch of CAMRA  
[www.camra.org.uk](http://www.camra.org.uk) Est. Readership 6000

### Swan Supping

FREE  
Campaign for Real Ale  
Issue 137 Late Summer 2023

The Champion Beer of Britain was decided at the Great British Beer Festival, Glastonbury! See Report on Page 10

Newsletter of the Aylesbury Vale & Wycombe Branch of CAMRA  
[www.camra.org.uk](http://www.camra.org.uk) Est. Readership 6000



# Marlow *Beerfest*

**30th MAY**

**31st MAY**

4-10pm FRI  
12-10pm SAT

**2025**

**W MUSIC  
V BANDS  
L HOT FOOD**

**30+ BEERS  
CIDERS GIN  
COCKTAILS**

LIVE: CHAMPIONS LEAGUE FINAL

**£6 ENTRY**

## **Marlow Football Club**

**Oak Tree Road, Marlow, SL7 3ED**

w: [www.marlowbeerfest.co.uk](http://www.marlowbeerfest.co.uk)  
e: [beer@marlowbeerfest.co.uk](mailto:beer@marlowbeerfest.co.uk)

x: @marlowbeers  
f: @marlowbeerfest

# Who and What Is This Magazine?

Welcome to *Cask Calling*, the new name for Aylesbury Vale & Wycombe Branch of CAMRA's magazine.

Many readers will have been familiar with, and looked forward to, our predecessor magazine/newsletter, *Swan Supping*, successfully produced and edited by Dave Roe for over 20 years.

Following the events of 2020 however, the viability of producing an A4 publication every two months was sadly tested to destruction, and despite partnering with Paper Red Media, who produce a plethora of other branches' magazines the decision was taken to cease production of *Swan Supping*. The Branch's thanks go to Dave Roe (see p4) for his sterling efforts over many years.

Initially the Branch's approach to our new publication is collegiate, with an editorial board/committee of Branch members helping, but without an overall 'editor' responsible for content and publication — a challenge there for any Branch member who would like to take on this role, supported of course by others within the branch.

Our aim is for the magazine to appear quarterly, Spring, Summer, Autumn and Winter, in March, June, September and December. This first issue will not meet that criterion, but do watch this space!

The observant reader will have noticed an immediate change, other than the name. It is now an A5 publication, rather than A4, so much easier to take away with you for later perusal. Copies can of course be read and left for others to read, but we do welcome our readers helping themselves to our latest issues.

So what else changes some may ask? To partly misquote Paul Daniels, not a lot, at least initially.

There will still be local news, round-ups and reports of events and other familiar features of our predecessor publication, but as with that, there will be changes over time.

While the branch magazine settles into its revised approach we will welcome feedback and comments from our readers: what would you like to see? what

did you find interesting? will 'letters to the editor' be published? (yes) can we share our thoughts and views? (yes, definitely).

Contributions will be welcomed from CAMRA members, and indeed from interested non-members. All can be addressed to [editor@avw.camra.org.uk](mailto:editor@avw.camra.org.uk), and we look forward to receiving your comments and contributions.

**RED ACTEUR**

**Editorial Board Members:** Michael Clarke, Giles du Boulay, Andrew Eastwood, Elvis Evans, Carl Griffin, Simon Heap & Richard Palmer

## *Cask Calling*

is distributed free of charge to pubs in the branch area.

Estimated Readership 6000.

Email: [editor@avw.camra.org.uk](mailto:editor@avw.camra.org.uk)

Designed & Produced on behalf of  
CAMRA by: Paper Red Media

Website: [www.paperredmedia.weebly.com](http://www.paperredmedia.weebly.com)

Neil Richards MBE - 01536 358670

[n.richards@btinternet.com](mailto:n.richards@btinternet.com)

Matt Richards

[paperredmedia@outlook.com](mailto:paperredmedia@outlook.com)

Printed By:

Printed by Zenith Media, Unit 9-13,  
Pontyfelin Industrial Estate, New Inn,  
Pontypool. NP4 0DQ

### **LOCAL TRADING STANDARDS**

From time to time, drinkers receiving poor standards of service or poor quality products may wish to raise the matter with Trading Standards.

You now need to do this through Citizens Advice, an organisation which provides free, confidential and impartial advice on consumer issues.

To contact Citizens Advice

Consumer Service call 03454 04 05 06  
or visit [www.citizensadvice.org.uk](http://www.citizensadvice.org.uk) and  
click on Consumer.

Views expressed in this magazine are those of the individual authors and not necessarily supported by the editor or CAMRA. All content © Aylesbury Vale & Wycombe Branch of CAMRA.

# Farewell Swan Supping

Our front page does say 'with cheers & thanks to *Swan Supping*' and there lies the tale.

*Swan Supping* has been the magazine of Aylesbury Vale & Wycombe's Branch of CAMRA since April 1997, at first quarterly, then bimonthly, available free of charge from a public house or another outlet near you, which outlets have received their regular deliveries of *Swan Supping* by the hand of the many CAMRA volunteers who distribute them in their own area.

The enforced regulations of the infamous 2020 period created a hiatus in the production of this (after 136 issues), and many other CAMRA branch magazines, some of which have since ceased publication, some of which resurfaced, initially only available on line, but latterly in the familiar printed form as well.

Hope returned in the summer of 2022, with the help of Paper Red Media, who look after the advertising and production of several other CAMRA branch magazines, with issue 137 being published and distributed. Sadly we could only produce a further two issues in 2023, with one other following in 2024.

Throughout its history Dave Roe has been the editor and an inspiration for *Swan Supping* but after 27 years wishes to take a back seat and see the Branch magazine free to go in a different direction, hence in part the change of name. The Branch committee felt we should seek a new name, with competitive submissions from interested members to be presented to the Branch for a final decision. Over ten names were submitted, as well as some three dozen AI-generated names — none of which were selected! Cask Calling, submitted by Simon Heap, was eventually selected: Cask Matters although considered, is as many will know, Cask Marque's magazine. Our thanks go to all who submitted names.

More than a mere nod is owed to Dave and to *Swan Supping* for the format of our Branch magazine issues, past, present and future.

At the recent Branch AGM this was recognized by the award of a certificate to Dave in appreciation of his long-term commitment.





# Branch Pub of the Year 2025



The Branch made our Pub of the Year 2025 award last night (6<sup>th</sup> March) at our 2025 Pub of the Year, **The Rose and Crown** in High Wycombe.

Branch committee and other members joined Chair, Mike Clarke, to present a certificate to Kirsten Palmer, licensee of the **Rose and Crown**.

Mike said “The **Rose and Crown** was joint runner-up in last year’s competition and is an excellent example of a thriving town centre local and shows how offering a great selection of real ale can build a loyal local following.”

The award was voted for by local branch members in an online poll. Members added their own tributes to the pub. Examples include: “the pub stands out as a survivor from the past against the backdrop of the Eden shopping centre”, “always a smile and good selection of real ale” and “beers are invariably in excellent condition and temperature, probably due to the traditional cellar and good attention to pump and line hygiene in the pub”.

Kirsten said “We are absolutely over the moon to have been awarded Pub of the Year from Aylesbury Vale & Wycombe CAMRA! This coincides with a five year renewal of our lease, so you’re stuck with us!”

The pub has three darts teams and hosts other games such as cribbage and other card games. Live music is also featured each month with charity pub quizzes and sports on TV. It’s also convenient for Wycombe bus station.

Members of the local CAMRA branch raise their glasses to the **Rose and Crown** and wish it good luck as it goes on to represent the branch in the next round of the CAMRA National Pub of the Year competition.

The presentation to the **Rose and Crown** was featured in the *Bucks Free Press*.

## POTY Bucks Free Press

# Not From The Ashes but Après le Deluge



Arguably the most westerly of Aylesbury Vale and Wycombe Branch of CAMRA's many pubs and clubs, this one-time *Halls Oxford Brewery* (later part of *Ind Coope*) pub the **Clifden Arms**, in Worminghall, in Buckinghamshire, very close to the River Thames and the County border with Oxfordshire, is currently privately owned by Robert and Gillian Porter-Smith with Mike Berthet, and is a thriving example of an English country pub/restaurant.

Visiting shortly thereafter, to deliver copies of our predecessor magazine, the General Manager, Rob Moreton, informed us that he felt the pub would be closed for at least 10 weeks. Fortunately, the newly built barn function room, which only opened in March, was unaffected by the flooding, giving them a base from which to work, but the restaurant, bars, kitchen, and cellar all suffered badly, not helped by contamination from the on-site septic tanks.

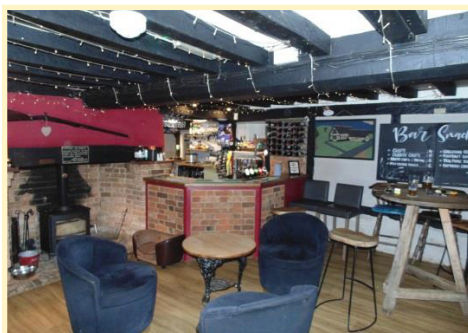


This proximity to the river may in part have contributed to the potentially disastrous event of the 23<sup>rd</sup> September 2024, when following the prolonged rains of that summer this rural gem was flooded — knee-deep or more in places.

Much appreciated by Worminghall residents, many of the staff who live locally assisted in the clean-up operation, along with local builders and offers of help from village residents and the pub was able to open one bar (the public bar or snug) within just three weeks; a complete team effort.

# Not From The Ashes but Apres le Deluge

Relatively unaffected by the flooding, being slightly above the main flood line, this area did benefit from a new wood floor, and is now a comfortable space with a wood-burning stove, popular with the community. A Branch Driving Social (of which more elsewhere) was able to visit the **Clifden Arms** in early November when the bars were open once again.



but an IPA from big brewers *Carlsberg-Marston*). Also, the intent is to hold their beer prices at the level of May 2024, with a maximum price of £5 a pint — Pride is currently £4.90.



An enjoyable visit at any time, the large garden and function room may perhaps be best experienced away from winter's gloom: the pub does play host to many local village activities and is much appreciated within the village, borne out surely by the willingness of local volunteers to help out following the flooding.



It is refreshing to find pubs that are appreciated as part of the community, and a community that appreciates its pub. Worminghall and the **Clifden Arms** are not unique in this respect but all too often we read of pubs forced to close through lack of support, or purchased and deliberately run down by developers hoping for change of use or demolition.

However, much of the rest of the pub and restaurant, though usable, was still drying out, and the full bar and restaurant service, from the refurbished kitchen, did not commence until later.



Nearly six months on, unless you knew of the event, it would be difficult to imagine the devastation caused. Both bars have comfortable seating, the restaurant is bright and airy, and now has a seven-day offering — it is advisable to book — there are often two real ales (cask conditioned) available, on our visit *Rebellion IPA* and *Fuller's London Pride* were current and enjoyed. The management, however, intend to rotate these beers regularly through the years, featuring beers from local breweries and others, for example *Hobgoblin IPA* recently (yes it's not *Wychood* and its not *Hobgoblin*,

As our King, then the Prince of Wales, was reported as saying "The Pub is the Hub"!

RICHARD PALMER



# Caskiteers

## Part 15

Jacob and Harry sat in the morning spring sunshine on the distressed church pew that served as seating outside their Shackney microbrewery, *Eaten Trifles*.

‘Amazed we’re still going strong here,’ Harry said, looking along Shackney High Street. ‘So many other craft beer bars and breweries have turned into sound-bath cafes or insect protein tasting rooms. Hipsters can be so fickle.’

‘Indeed,’ Jacob concurred, stroking his beard. ‘Such has been the popularity of *Beard Oil Slick IPA* that our accountant told me to lie on my chaise longue as he whispered we might be in prospect of making the p word.’

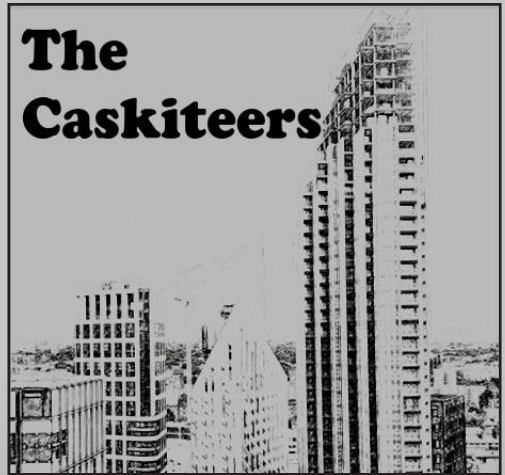
‘Pumpkin spiced latte pastry stout?’ Harry asked enthusiastically.

‘No, profit!’ Jacob replied. ‘But it’s not all good news. As soon as word got to pater that he might get a little payback for his funding of *Eaten Trifles*, he decided he’d send in my third cousin, twice removed to maximise his return on investment – the dreaded Elton.’

‘Not that awful Atticus Kale-Burger wimp?’ Harry said, aghast. ‘The obnoxious runt we used to kick into the river during the wall game at school?’

‘Yes, unfortunately the same,’ Jacob intoned gravely. ‘The same insufferable know-all who re-invented himself as Elton Tusk the tech-bro on inheriting half of Scotland from his father.’ He glanced at his Loganberry watch. ‘And what’s worse he’s due to arrive here at eleven.’

Elton arrived in Shackney dressed in an expensive blazer over a T-shirt emblazoned with the slogan ‘Coolest dude in the Universe.’ Much to Jacob and Harry’s consternation, he’d completely shattered *Eaten Trifles’* unspoken dress code of oversized checked shirts and beanie hats.



Without any greeting, Elton strode to the bar’s front door and propped it open with a fire extinguisher, muttering ‘Health and safety rubbish.’

He then exited the building and crossed the Shackney High Street. When he’d got about fifty yards away, he turned around, puffed out his chest and huffed his jowly cheeks, so he looked even more like a hamster than Jacob remembered.

He then started an awkward, loping jog back in the direction of *Eaten Trifles*, slowly gathering speed until rushing across the High Street, oblivious to an oncoming London bus that had to brake to avoid mowing him down. He continued his run into the bar and headed at his unathletic full-speed towards the brewery at the back, where he leapt karate style at one of the stainless-steel fermenting vessels. After a howl and string of expletives, Elton collapsed in a heap on the floor, holding his leg.

‘Don’t just stand there, you idiot. Call an ambulance!’ Elton ranted at Jacob.



# Caskiteers - Part 15

---

'But didn't you say last time we met that the ambulance service was a waste of government resources for sick losers and that all the vehicles should be sold to be turned into ice-cream vans?' Jacob asked.

A temperature gauge on the fermenting vessel, which had borne the brunt of Elton's assault, broke free from its damaged fixing and dropped, whacking Elton on the head.

'Whit th' hell dae ye think yer daein', attackin' ma brewery equipment?! Hae ye lost yer mind, ye daft bampot?' Ruthie, *Eaten Trifles*' Glaswegian brewer, said, emerging from the brewery and standing over Elton's crumpled figure.

'It's my philosophy: move fast and break things — just like all the other tech bros,' Elton stammered, feeling his leg and then gingerly standing on it, the leg feeling more intact than his recent screaming fit had suggested.

'Touch ma mash tun or ony ither o' ma vessels an' Ah'll move fast an' break ye, understand, ye weedy wee excuse o' a man? Ye'll be pickin' yer teeth aff th' flair afore ye can say "IPA"!' Ruthie said, rolling up her sleeves to show her biceps tattooed with daggers, cat-o'-nine-tails and other favourite weapons of the Glasgow underworld. 'Ah'm off for ma lunchtime fried Mars bar.'

'My favourite too,' Elton said ingratiatingly. 'Authentic dirty street food!'

'Ye better no be here when Ah git back,' Ruthie said, putting on her trench coat.

Two minutes after he was sure Ruthie left, Elton grabbed Harry while he was drinking a *Sphagnum Moss and Clover Stout*.

'You're not going to let a femoid interfere with my radical business restructuring investigation, are you?' Elton said. 'I'm going to take a look around this brewery and report back to your pater and chief investor whether you like it or not.'

Elton teetered on a ladder and stared down into a fermenting vessel, which had a thick head of yeast, with Harry and Jacob holding the ladder below but tempted to accidentally let go.

'There's about ten billion yeast cells working hard on our *Sampshire and Poached Quail's Egg IPA* in there, so Ruthie tells me,' Harry said.

'Workers, you say? They must be cut,' Elton said in a robotic voice. 'Ten billion? That means we should fire eight billion of them,' Elton says. 'It's my foolproof management philosophy. Fire eighty percent of the workforce immediately.'

'Erm, how do we fire yeast cells?' Harry asked. 'We don't pay them.'

'They digest all the fermentable sugars that we generously provide them,' Jacob said, reading an idiots guide to brewing on Wikipedia on his phone.

'See, they're parasiting on your entre-preneurial generosity,' Elton said. 'I must terminate their contracts immediately.'

'Are you going repeat "You're fired" eight billion times?' Jacob asked.

'Fetch me a bucket,' Elton demanded.

After removing eighty percent of the yeast from the fermenter and throwing it down the drain, Elton declared that he was cutting short the contracts of the remaining twenty-percent of yeast cells. He instructed Harry to immediately empty the partly-fermented beer into the brewpub's conditioning tank and to put it on sale immediately at the bar.

'That'll improve your cash-flow,' Elton declared. 'I didn't become a multi-millionaire by tolerating waste and slacking.'

'Er, Elton, didn't you inherit a billion off your old man?' Harry asked.

# Caskiteers - Part 15

'You need a long-term perspective, bro,' Elton replied hurriedly.

At that point an angry commotion broke out on one of the brewery's artisanal wooden benches where a group of lunchtime drinkers were cursing their pints of *Sampshire and Poached Quail's Egg IPA*.

'There's unfiltered beer and there's this horrible murky mess,' shouted one female drinker in dungarees.

'I expect my IPAs to be at least 14% alcohol. This barely has any!' one thirty-something man with a ponytail and handlebar moustache complained.

'If I'm going to pay fifteen pounds a pint for overhopped bilge then at least I want to get thoroughly inebriated,' a woman grumbled to Harry. 'I want my money back.'

Elton looked at his watch. 'I'd better be off. I charge ten thousand bitcoins an hour for consultancy.'

As he sidled out of the door, leaving Jacob and Harry to face their enraged customers, Elton bumped into the returning Ruthie.

'Yer still here? Ah'm gonnae ram this deep-fried Mars bar somewheres yer tech bro spreadsheets cannae compute at all,' she said as Elton ran even faster away from *Eaten Trifles* than when he'd arrived.

CHARLIE MACKLE

THE CHILTERN BREWERY

Drink the **BEST BITTER** of the Chilterns

Pick up your weekly fresh draught beer from the brewery shop

Monday to Saturday 10am to 5pm  
[www.chilternbrewery.co.uk](http://www.chilternbrewery.co.uk)

THE CHILTERN BREWERY

**Beechwood Bitter**  
amber, nutty, toffee, fruity 4.9% vol

AWARD WINNING ALE

THE CHILTERN BREWERY

BEAR GOOD AND GIVE HIM THE GLORY

f X Instagram YouTube

# YOUTHFUL MEMORIES OF BEACONSFIELD PUBS

Around 1974 I was 17 and had several schoolfriends living in Beaconsfield so an evening there was quite a normal thing. I had not yet discovered real beer so I can't say anything about that and, anyway, I was too young to drink. But there were some good pubs and we had some good evenings in them. There was also a good chippy in Beaconsfield in those days.

Top of the tree for pubs was the **Earl of Beaconsfield**. This was demolished around 1981 or 1982 and a Waitrose supermarket now stands there.



It was always packed. The landlord was a real character and ran the place with rules strictly enforced. Nobody dared to argue with him.

There is, however, an **Earl of Bekonscot** pub still, but it's difficult to get into.

If you wanted a different venue then the next ones on the list were the **George** (now the Crazy Bear Hotel and restaurant) and the **Old Hare** (later an Italian restaurant but more recently an Indian restaurant). Then, after those, were the **Greyhound** (now an Italian restaurant) and the **Prince of Wales** (now an Indian restaurant).

Note that none of the above five pubs still operates as a pub. You would have had to be desperate to go to the rather down-market **Beech Tree** (later to be **Revolutions** but now closed and vacant) or the rather up-market **White Hart** (now Brown's restaurant) but, again, neither operates as a pub now.



Of the four pubs that were around in 1974 and still going as pubs we find the **White Horse**, the **Saracen's Head**, the **Swan** (at times the **White Swan** and **The Hogshead**) and the **Star** (later the

**Wayfinder's Retreat** and the **Charles Dickens** but now the **Tree House**).

There have been two new places opening and these are the **Beaconsfield Taps** which is a craft beer venue and opened in 2023 and the other is the **Beech House** which is mainly a restaurant but does sell real ale. This opened around 2013.



Pubs that closed a long time ago are the **Cross Keys**, the **King's Head**, the **Crown**, the **Bull**, the **Three Horseshoes**, the **Red Ox**, the **Paschal Lamb**, the **Quart Pot**, the **Weavers Arms** and the **Chopping Knife** but these were all defunct long before my time. Many are still standing but we are not even totally sure where a few of them were. The only one that still looks like a pub is the **Cross Keys**. I have also come across reference to a place called the **Railway Hotel** but I think this is a former name for the **Earl of Beaconsfield** pub.

What all this means is that Beaconsfield used to be a good place to go to for an evening out but that isn't so much the case at the moment. The town layout of Beaconsfield doesn't help this as the **Beech House** and the **Beaconsfield Taps** are both near the station whereas the **Swan** and the **White Horse** are in the old part of town and there's quite a distance between those two areas. The other venues in the town are not, in my opinion, worth visiting.

All of which may change if the Wetherspoons eventually opens in the town. JDW have been blowing hot and cold over this project for quite a few years now but it does seem to be finally going ahead. When it does open it will be between the two distinct areas and could draw people to the town for an evening out. This has worked in other towns. Will it work for Beaconsfield?

ELVIS EVANS

*Earl of Bekonscot courtesy Brian Newman-Smith and Bekonscot Model Village.*

# In Search of the Warwick Castle



There's a great pub in Maida Vale in London called the **Warwick Castle**. But is there a pub with the same name in Warwick, home of the titular and rather splendid mediaeval castle? Fortunately, in early January, with Warwick being a stop on the Chiltern Mainline towards Birmingham, I could visit the town and find out for myself.

In real ale terms Warwick has until recently been in the shadow of its larger, and more regal, neighbour, Royal Leamington Spa. But no more! It now has six pubs in the *Good Beer Guide* compared to Leamington's measly two.

Unfortunately, these six pubs are spread all over the Warwick metropolis, with one sited in an industrial estate with few public transport connections. Another, the **Cape of Good Hope** is located next to the Grand Union Canal in Warwick's northern suburbs. Because of the vagaries of the local bus timetable, it actually made more sense for us to begin our Warwick odyssey there – and it was reached most easily by catching a bus in its direction from central Leamington Spa.

Meeting my friend Andy at Leamington station, we wandered up to the relevant bus stop. This happened to be rather convenient for the local Wetherspoon, the **Benjamin Satchwell**. Since it was before midday, it would have been rude not to observe tradition and join the locals who had been enjoying the pub's hospitality since opening time. It was a better than average Wetherspoon. Apparently, the eponymous Satchwell was born in 1732, was a shoemaker and later became

Leamington's first postmaster. We enjoyed *Loch Lomond Brewery* New England IPA, *Zoom Time* and the *East London Brewing Company* Oatmeal Stout, *Quadrant*.

The bus took us on a route through the suburbs of Leamington Spa and Warwick and we eventually alighted in the middle of a housing estate. We passed some flats where scaffolders were generously sharing their rap music at full volume with the local residents on this tranquil Saturday lunchtime.

Ears battered, we emerged on the Grand Union Canal and spotted the **Cape of Good Hope** on the opposite side of a lock and no nearby bridge. Cursing Google Maps, we realised there was indeed a way to cross the canal here – by balancing on the tops of the lock gates themselves while holding fragile-looking handrails.



Fortunately, with only one pint consumed, we could keep our balance and reach the other side. However, the weather was cold enough to have iced over the canal, and we realised afterwards that any ice patches on the lock gates could have caused us a freezing, wet accident. The things we do for pubs.



# In Search of the Warwick Castle



The **Cape of Good Hope** is a lovely canal-side pub, probably even better visited on a balmy summer evening than a chilly January lunchtime. The side of the pub closest to the canal is the oldest, with a wonderfully snug, rustic tiled bar and a wood-burning stove. The pub has been extended, with a larger dining area added to the non-watery side. It is also exceptionally dog friendly, with a variety of canine companions joining their owners in the public bar.



There are also plenty of antique canal network maps on the wall to keep even the most anal-retentive CAMRA transport anorak entertained for a pint or two (or is it only trains that count?). We sampled *Wye Valley Brewery Butty Bach*. Our enjoyment of the pint was tempered a little by a very strange acrid aroma that suddenly filled the bar. After a few pained yelps, it turned out that this was due to one of the customers' dogs having become a bit too enthusiastic about warming itself up by the wood-burner and had set its tail on fire. Fortunately, the canal provided a ready supply of water to extinguish the dog.

While the canal-side location of the **Cape of Good Hope** was charming, less can be said about the area of Warwick on the way to the next pub. The environs wouldn't have been recommended by the tourist board except to someone with a keen interest in vernacular, late twentieth century warehouse design.

Eventually we neared the centre of town and our next destination, the **Eagle**. It occupies a subterranean bolt hole just outside the main

square. The **Eagle** is known as Warwick's smallest pub. And tucked away in an old cellar with barely room to swing the proverbial cat (or singed dog), that's an honour that it will likely keep until someone opens a micropub in a broom cupboard.



It has a cave-like feel with a low, vaulted stone ceiling. There are maybe three or four small tables with seating around the edges of the room, with a small bar in the corner. There's still room enough for some eclectic decorations, including, for some reason, a photo of much-missed Reggie Perrin actor, Leonard Rossiter. The **Eagle's** unisex toilet made up in aroma what it lacked in size with its heady incense smell. And the beer wasn't bad either. I sampled *Vocation Brewery Bread & Butter* and *Verdant Brewing Co. Lightbulb*.

Our next stop was something of a wander in the direction of the castle, although this remained out of our sight. If what you read on the internet is to be believed, the **Four Penny Pub**



is so named because when the Warwick section of The Grand Union Canal was being built, a nearby tavern was charging a mere four pennies for a cup of coffee and a tot of rum. None of that nonsense for us: I enjoyed *Abbeydale Brewery Vanilla Stout* (although it was a bit too vanilla for my taste) and *Church Farm Brewery Pale Ale*.

# In Search of the Warwick Castle

The name painted on the outside of the building refers to the building's other identity: the Old Four Penny Shop Hotel. The bright, modern bar seemed to have more of a hotel foyer ambience than a traditional pub. But what do I know? The place was local branch Pub of the Year in 2024.



First impressions of the nearby the **Old Post Office** are of a classic, historic pub – except, despite all the dark wood and antique furniture, it isn't. As the name suggests, it's a

recent conversion (2014) from an old post office into what can be loosely described as a micropub (although it's not so micro).

Entering on a cold, January afternoon we had to squeeze into the packed pub past a singer-guitarist who was performing in a space right near the front door. His repertoire of mostly 60s and 70s music was a very mellow accompaniment to *Church End Brewery What the Fox's Hat*. We squeezed around a table on the pub's upper level, which has a curious collection of church fittings – with a hymn and palm board on one wall. I loved this pub. It had a rare combination of a genuine community feel, good beer and a fascinating, quirky interior. I can't wait to return.

Unfortunately, the train back south beckoned and our last stop, a fifteen-minute walk out of the centre of town. Close to the station, the **Wild Boar** is home to *Slaughterhouse Brewery* (whose



equipment can be viewed through glass panels on the way to the toilets), is a partnership between the local *Slaughterhouse Brewery* and *Everards Ltd*. I enjoyed the *Slaughterhouse Brewery Wild Boar*, a dark ale with an ABV of 5.2%, and *Oakham Ales Citra*.

Despite the search expedition, we discovered there actually isn't a pub in Warwick called the Warwick Castle. There's a **Castle Inn** and an **Elephant and Castle** but these don't grace the pages of the esteemed *Good Beer Guide* so remained unvisited. But the five pubs we visited that don't mention the castle in their name still made Warwick well worth the trip, purely for beer-loving reasons alone.

MIKE CLARKE

## REBELLION BEER

Order Online

Brewery Shop : Tap Yard : Drive-Through  
www.rebellionbeer.co.uk 01628 476594

TAP YARD

Visit our fully stocked on-site brewery bar, serving our full range of ales and keg beers plus wines, spirits and more...

SHOP

With take-away draught and bottled beers plus wines, ciders, spirits and gift ideas, there's something for everyone in our shop.

FREE LOCAL DELIVERY

Within 20 miles of Marlow, we'll deliver your beer order to your door. Order online or give us a call. (Minimum spend applies)

**Shop & Drive-Through Opening Hours**  
Mon, Tue, Wed: 9-6 / Thurs, Fri, Sat: 9-7 / Sun: Closed

**Tap Yard Opening Hours**  
Mon, Tue, Wed: 11.30-7 / Thurs: 11.30-9  
Fri & Sat: 11.30-10 / Sun: Closed

# Pub and Brewery News

## Ashendon

The **Ash Tree** in Ashendon, formerly the **Hundred of Ashendon**, reopened in December 2024 having been bought by the Ashendon Community Pub Society Limited (a Community Benefit Society) in September 2024. The pub had been closed since November 2022.

## Aston Rowant

Although firmly a hotel these days, the **Lambert Arms'** bar is open to non-residents, and had **Fuller's London Pride** and **Rebellion IPA** available on an early March visit.

## Aylesbury

Ian Matthews, licensee of the Branch's Joint Pub of the Year, the was presented with a certificate celebrating this achievement by Branch Chairman Mike Clarke and other branch members on Thursday 27 March. Fellow runner-up, the **King and Queen**, Wendover, similarly received their certificate the following Sunday.



## Beaconsfield

In April 2024 JD Wetherspoon revived their plans to convert the former Prezzo restaurant on Station Road. Planning permission had been granted in July 2022. A new planning application was submitted in January 2025. This will be one of thirteen pubs JD Wetherspoon is due to open this year.

## Bledlow

The **Lions at Bledlow**, a 16th century country pub, just off The Ridgeway walking trail, has five hand-pumps with the house ale **Wadworth 6X**, and four (usually) local ales – think **Chiltern**, **Loddon**, **Loose Cannon**, and **Vale**. A *Cask Calling* visit found **Chiltern Beechwood Bitter**, **Loose Cannon Abingdon Bridge** and **Adnams Ghost Ship** available.

## Bourne End

CAMRA is not the only organization recognizing pubs with awards; security advisors Get Licensed recently recognized the **Garibaldi** as the 6th most friendly UK pub. Our thanks to the *Bucks Free Press* for letting us know. **Feisty Beer Company**, based in Station Court next to

Bourne End station has applied for a premises licence to sell alcohol between 11:30 and 21:30 Monday, Thursday and Sunday, and until 22:30 Friday and Saturday. It is hoped it will serve as a retail outlet and a safe space for the wider local community.

## Cadmore End

The Branch was contacted in September 2024 to be told that the **Old Ship** was to be reopened. It has been closed since 2010. It is in the process of being redecorated and will hopefully reopen in the coming months.

## Chinnor

Chinnor's only GBG-listed pub, the **Red Lion**, continues with its four ale selection. XT3 remains as the session ale, augmented by a rotating three ale line-up – **Settle Ribblehead Bitter**, **ABInBev Bass** and **Robinsons Dizzy Blonde** on a recent Saturday early evening visit; pints of the **Ribblehead** and **Bass** both in excellent condition.

The **Crown** has reduced its ale selection to a single handpump, serving **Timothy Taylor Landlord**, albeit **Rebellion IPA** and a **Rebellion** seasonal ale (*Endurance* on a recent Monday night visit) are available on keg dispense.

**Chinnor Community Pavilion** similarly has a couple of **Rebellion** ales available via keg. Chinnor welcomed its first wine bar – **Grapes & Flavours** – in February 2024, and although the focus is on vine-related drinks, they do serve two keg beers from local breweries **Boobytrap** and **XT**.

## Cryers Hill

The **White Lion** is closed again, and new tenants are being sought by Stonegate. It had only just reopened in May 2024.

## Cublington

The **Unicorn**, a Grade II listed building, 'temporarily closed' according to Google Maps, closed at the end of August 2024. The freehold is advertised for sale on RightMove and has recently been listed by Sidney Phillips Limited as a freehold, or as a lease. Thanks again to *Bucks Free Press* (16 February) for the information.

## Emmington

The **Inn at Emmington** continues to have exclusively local ales available on its three



handpumps, with *Rebellion IPA* (the house ale), *Rebellion Endurance* and *Animal Buzzard* on the stumps on a March Saturday afternoon visit – the latter two in super condition. Landlord Dave rotates beers from *Chiltern*, *Loose Cannon*, *Tring* and *Vale*, and the food offerings plus spacious beer garden continue to be a feather in the cap for this recent GBG-listed inn.

Despite these consistent efforts, the current trading climate has seen the **Inn at Emmington** ceased trading on Friday 28 March, and it is currently closed.

---

## Henton

The **Peacock** had just *Sharp's Doom Bar* available from one of its three handpumps, but it was in excellent shape on a mid-March visit. They also had a 22-pint bright box of *Rebellion Roasted Nuts* on the bar, and bottled *Vale* ales are available to purchase. Although the focus is primarily on food and accommodation, there is a separate bar area for those preferring a liquid diet, the welcome is warm and the staff are engaging.

---

## High Wycombe

*Brazenor's Brews* opened a tap room at their brewery on the Basepoint Business Centre in October 2024. The brewery had moved from Maidenhead in July 2024.

Bucks Council have granted planning permission to convert the upper floors of the **Masons Arms** into three flats. The pub closed in January 2022. No further applications covering the ground floor have been submitted since two were withdrawn in late 2022/early 2023.

Bucks Council have granted planning permission to demolish the **Pheasant** on London Road and replace it with nine flats. The pub closed in November 2019.

---

## Lacey Green

The freehold of the **Whip Inn** was sold in January 2025. The pub closed in March 2024 having been up for sale since 2023.

---

## Loudwater

A planning application to convert the **Happy Union** into a 21-bed house in multiple occupation was made in September 2024. The pub, on the junction of Boundary Road and Treadaway Hill, closed in mid-2020.

The **Derehams Inn** has also submitted a planning application to demolish outbuildings and build extensions to increase the pub's seating area. More

information is available from Bucks Council, and a recent (18 February) article in the *Bucks Free Press*, so hopefully a happier sign than the many changes of use or demolition applications made to planning authorities.



---

## Marlow

JD Wetherspoon opened the **Grand Assembly** in September 2024. It was reported as one of their busiest opening days.



The **George and Dragon** closed by Whitbread Inns in August 2024 has been bought by Heartwood Inns who are undertaking renovations to the Grade 2 listed building. The pub is due to reopen later this year.

---

## Marlow Bottom

The **Three Horseshoes** closed in April 2024 and Stonegate had been advertising for new tenants. In late November 2024, however, it reopened as a Pan Asian restaurant called Agnii.

---

## Medmenham

The **Dog & Badger** temporarily closed in March 2024 owing to issues with their car park. No news yet as to when it may reopen.

---

## Penn

The **Crown** reopened in October 2024 having been shut for three months for a refurbishment and conversion from a Chef & Brewer to one of *Greene King's* Crafted Pubs.

---

## Postcombe

The **England's Rose** continues with *Rebellion IPA* served through a keg line, although a good range of bottled ales is also available. A B&B with a huge beer garden, work is underway to improve the patio area with a party scheduled upon completion, hopefully sometime in May.

---

## Saunderton

The **Golden Cross** reopened in July 2024 with new tenants.

---

## Skirmett

The **Frog** closed in January 2024 and was sold. The new owners are currently in the process of renovating it.



## Stewkley

The **Swan** reopened in September 2024 having been closed since March 2022.

## Stokenchurch

The **Royal Oak** closed in April 2024 and was put up for sale. A planning application for demolition of the attached storage rooms and the building of a single-storey extension was made in December 2024.

## Sydenham

Two out of three handpumps are usually occupied at the **Crown**, with **Rebellion IPA** as the house ale, joined by a **Rebellion** seasonal ale. As mentioned in the final *Swan Supping* edition, Andon and Galina came on board in April last year and have carried on the good work of previous incumbents. The food offerings continue to be superb (Andon was a TV chef back in Bulgaria) and the garden is shaping up for the summer, with Aunt Sally continuing as well as supporting the annual Sydenham Fayre in early June.

## Terrick

**Chiltern Brewery** has received a third award for their **Earl Grey IPA** in a can, two bronze awards and a gold, of which they are rightly proud.

## Tetsworth

The **Old Red Lion** had just **XT3** on one of its three handpumps when visited in early May, although the second and third pumps are often occupied, usually with local ales. They also have a good selection of bottled ales available.

## Thame

'Mild May' is a regular CAMRA national event,



highlighting the oft neglected mild beer style. Thame is fortunate that The **Falcon** now features **Hooky Mild** as their regular **Hook Norton** beer, alongside **Hooky Bitter**.



Consequent to their difficulties in keeping and serving **XT4** as their cask ale, **Thame Snooker Club** has settled on **Wainwright Amber** as their regular cask ale.

Several recent visits found the ale in excellent condition.

Thame's oldest pub, the **Birdcage**, ceased trading as

a Stonegate managed house, and was transferred to Craft Union (a Stonegate brand) in October 2024. It is run, independently, under the Craft Union umbrella by operators (Craft Unions' term for the lessees) Tom Luckett and his partner Fabio Dore. They immediately dropped the food offering occasioning some local comment, but run it as a wet-only pub with late nights on Friday and Saturday. The two handpumps have had different ales available since they reopened, but Tom has settled on **Fuller's London Pride** as their regular real ale, which is currently £4.80 a pint. The pub offers different events, including a regular Meat Raffle and Karaoke nights to appeal to differing sectors of their customer base.



## Towersey

The **Three Horseshoes**, looking good with its new signage after the brewery removed the old Pubmaster livery, had **Sharp's Doom Bar** available on one of its two handpumps on the last *Cask Calling* visit, but the second pump has worn **Black Sheep Bitter** and **Timothy Taylor Landlord** clips of late. David and Helen have been at helm for almost 2½ years now and have continued this pub's high regard for its food offerings. The pizza menu, introduced last year, also remains popular, and the suntrap beer garden out front remains a glorious spot on a clement day.

## Waddesdon

The **Bow**, formerly the **Long Dog**, reopened in October 2024 having been closed since January 2022. It has been bought by the Rothschild Foundation who also own the **Five Arrows**.

## Wendover

Joint runners-up in the 2025 Branch POTY, the **King and Queen**, received their certificate in recognition from Branch Chairman Mike Clarke and Vice-Chairman Elvis Evans on Sunday 30 March, a well-deserved recognition of their success.



## Whitchurch

The **White Swan** reopened in November 2024 having been closed for three months whilst Admiral Taverns found new tenants.

---

# AYLESBURY VALE & WYCOMBE AGM

## A REPORT

---

The Branch held its Annual General Meeting on Wednesday 19 February 2025 at the **Riverside Club** in High Wycombe.

The 17 Branch members attending heard from Mike Clarke, the Branch Chairman who referred to the continued tough economic challenges which were facing pubs and breweries. However, despite the challenges the number of pubs in the Branch had remained relatively stable and there had even been a number of pubs reopening or opening for the first time, most notably the **Ash Tree** at Ashendon (formerly the **Hundred of Ashendon**) and the new Wetherspoons pub in Marlow, The **Grand Assembly**. The Branch was also fortunate to have a number of excellent cask ale breweries, including *Chiltern, Rebellion, Vale* and *XT*.

The Chairman stressed the importance of trying to protect the existing pubs by lobbying locally against planning applications which would change the use of a pub. However, when it came to pubs becoming restaurants, a fate that had recently befallen the **Whip** at Lacey Green and the **Three Horseshoes** at Borough Grove, there was little that could be done as planning permission was not required. The Chairman encouraged members to take the opportunity provided by the forthcoming Buckinghamshire Council elections to lobby candidates on the importance of pubs to their local community and the need to see them safeguarded.

On a positive note, the Chairman referred to the potential of the Branch being involved in staging a beer festival in High Wycombe and the impending launch of a new Branch magazine, *Cask Calling*, which would replace *Swan Supping*. The Chairman also thanked those members who contributed significantly to the work of the Branch by submitting pub updates and beer scores.

The Chairman took the opportunity to present Dave Roe with a certificate recognising his outstanding contribution to the Branch as Editor of the Branch Magazine, *Swan Supping*, from its inception in 1997 to 2024, which saw the last edition of the magazine.

On behalf of David Martin, the new Director for the CAMRA East Central Region, the Chairman outlined that discussions were still ongoing at a national level as to whether branch boundaries should be in line with county boundaries which, were that to be the case, would see the Branch losing that part of the Branch area which was currently in Oxfordshire. It was understood that a decision would be made known by the end of March.

The meeting elected the Branch Committee for 2025/26 along with its officers.

Mike Clarke was re-elected as the Branch Chairman, Elvis Evans the Vice-Chairman, Dave Roe the Treasurer and Simon Heap as Secretary. A full list of officers and committee members can be seen on the Branch website.

One of the highlights of the evening was the much-anticipated announcement of the results of the online poll for the Branch Pub of the Year 2025 which saw the **Rose and Crown**, High Wycombe crowned Aylesbury Vale and Wycombe Pub of the Year 2025 with the **Hop Pole**, Aylesbury and the **King and Queen**, Wendover being named as joint runners-up. You can read more about The Branch Pub of the Year on page 5.

The meeting concluded with an interesting presentation from Simon Collinson, Director of Oak Taverns, which own a number of pubs in the Branch area, including the Branch Pub of the Year 2023, the **Bird in Hand**, Princes Risborough, the Branch Pub of the Year 2024, the **Cross Keys**, Thame, and the joint runner-up in 2024, the **Red Lion**, Chinnor.

Mr Collinson explained that Oak Taverns had been running pubs over the last 34 years, using a number of different business models, before settling on a 'wet only' model for the majority of its 16 pubs. The 'wet only' pubs focused primarily on cask ale, so no food, no music and no gaming machines. The only change to the original 'wet only' model was that all pubs acquired now had an outdoor drinking space. Of the 16 pubs, 11 were in Oxfordshire, two were in Buckinghamshire with the three remaining

# AYLESBURY VALE & WYCOMBE AGM A REPORT

pubs being in Bracknell (Berks.), Ebley (Glos.) and Dorchester (Dorset).



*Simon Collinson and Mike Clarke at the Red Lion, Chinnor, February 2025.*

Mr Collinson referred to the good relationship between Oak Taverns and CAMRA, with Oak Taverns' pubs being named Pub of the Year 2024 in three different branches.

Mr Collinson was happy for the Oak Taverns' pubs to encourage CAMRA membership and was open to working with the Branch to promote CAMRA activities, including encouraging members to submit beer scores.

Mr Collinson also referred to challenging trading conditions facing the licensing trade, and the additional costs the sector was facing, with increases to Employer's National Insurance contributions, the Minimum Wage and potentially Business Rates. Regrettably, as a result, pubs were continuing to close. However, overall licensed space was increasing, and while cask ale sales were struggling to hold their own, pubs offering a good range of cask beers were tending to survive, with beers from the smaller breweries proving popular.

Mr Collinson also commented on the listing of pubs as Assets of Community Value from a pubco's point of view.

## Branch Events

### MAY

#### Saturday 10th

Hambleden Valley Driving Social, start 12.30pm, Stag and Huntsman, Hambleden, then work backwards up the valley to Frog at Skirmett (if open), Bull and Butcher, Turville, Chequers, Fingest, Prince Albert, Frieth, Yew Tree, Frieth

#### Sunday 18th

12.30pm, Sunday Social, Grand Assembly, Marlow

#### Thursday 22nd

Social, 6.30pm, Lions of Bledlow, 7.15pm Crown, Chinnor, 7.45pm Red Lion, Chinnor

### JUNE

#### Tuesday 3rd

7pm, Branch Meeting, Bird in Hand, Princes Risborough

#### Thursday 12th

Social, 6.30pm Le De Spencer, Downley Common, 7.30pm Wheel, Naphill

#### Saturday 28th

This year's Black Country Trip is scheduled for Saturday 28th of June and has already been booked as we didn't want to miss out on the date planned as we did last year! The cost is £42, which is just one pound more

than the trip last September! The coach will pick up in Aylesbury outside the Broad Leys at 9.40am and then at the following: Princes Risborough (Opposite the Bell 9.55am), High Wycombe (Desborough Avenue 10.10am) and Stokenchurch (10.20am). Please note that the timings after Aylesbury are approximate and depend on traffic. Other pick-ups on route can be catered for. Due to popular demand, we will once again start at the Coach & Horses, Weatheroak, to break the journey and enjoy their superb range of beer and quickly served food. We will visit lots of old favourites, such as the Bull & Bladder and the Beacon Hotel, plus we plan to revisit the Fountain in Lower Gornal which now has its own brewery and regularly features ten beers! After a full day's enjoyment, we will drop off in reverse order, with the bus due to arrive back in Aylesbury before midnight! Contact David Roe ([dwrss@aol.com](mailto:dwrss@aol.com)) to book your place! Space is limited, so make sure you don't miss out.

### BEER FESTIVALS

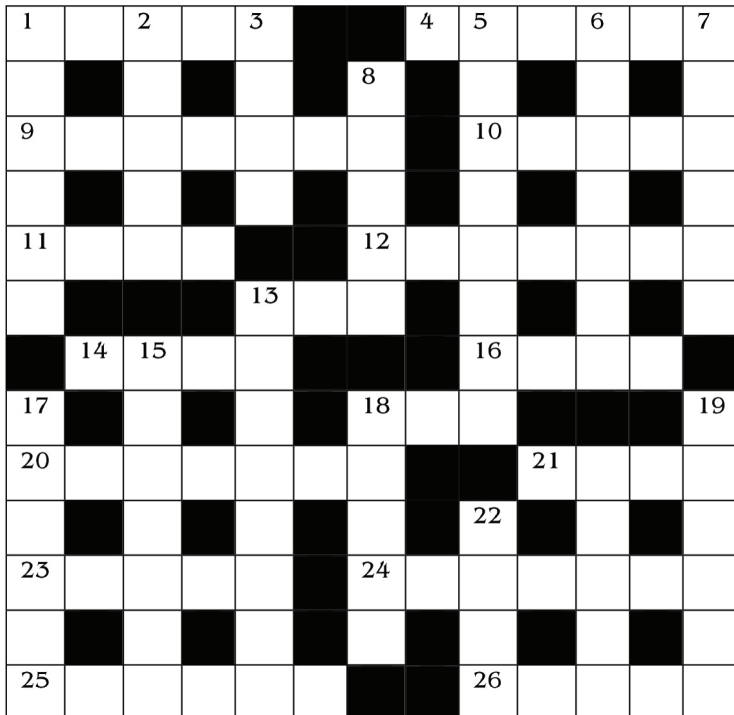
#### Friday/Saturday, 30th–31st May

Marlow Football Club Beer Festival

#### Saturday 5th July

Haddenham Summerfest

# Calling's Crossword No. 1



## Across

1. To be honest he used to be French (5)
4. Sounds pure but ran after (6)
9. There was a dark one in Aylesbury (7)
10. Perfect when it's on the cake (5)
11. The river sounds like it flows slowly (4)
12. The hats play cricket (7)
13. The song says there's no spitting here (3)
14. Tardy but not quite coffee (4)
16. A house for drying oats (4)
18. Tell him we're selling all the assets (3)
20. Prise the alien to get a young mammal (7)
21. He will have a medium beer (4)
23. Forbid her entry. She's got an instrument (5)
24. Eastern gypsy is mixed up. Do you want another? (3, 4)
25. For drinking German beers (6)
26. The Eastern opening was quite a happening (5)

## Down

1. Field produces nothing except a foreign autumn and a cry of pain (6)
2. Relatives but that doesn't sound to be the case (5)
3. Eager to cry (4)
5. He was quick to praise the club (8)
6. They're happy to be right in the old Bristol brewery (7)
7. The reader can absorb the goodness (6)
8. Northern stud is mixed up and they think they're superior (5)
13. Carry the conurbation to a brewery (7)
15. Lend some money and go forward (7)
17. Lo begs the Earths (6)
18. Guitar gets a mixed start (5)
19. Very polite but sounds like it's going down (6)
22. Sounds like a cunning way to make beer (4)

(For Answers see issue 2)



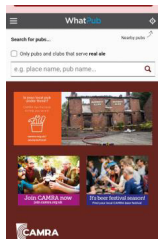
# BEER SCORING

## What Pub, Beer Scoring and the Good Beer Guide

You are probably aware of the *Good Beer Guide*, CAMRA's flagship publication which lists the best pubs in the UK. But what you may not know is how those pubs are selected to appear in the *Guide*. The answer is that it is largely via beer scores submitted by CAMRA members from all over the country. So, if you are a CAMRA member you can send in beer scores. If you've ever wondered why your favourite pub isn't in the *Guide*, this may well be because CAMRA members haven't entered scores rating the quality of beer. By beer scoring, you can contribute to the process of selection of pubs that go in the *Good Beer Guide*.

### So how do I score the quality of the beer?

You don't have to be an 'expert' to begin scoring your beer. It is not, however, about your personal favourite beer receiving the highest scores! You may try a beer that isn't to your normal taste but what you need to consider is the quality of that beer, how well the pub has kept it and served it and score it according to the general guide below. It is a simple 0 to 5 point system, with half points being used if your opinion of the beer falls between two categories.



0. No cask ale available

1. **Poor.** Beer is anything from barely drinkable to drinkable with considerable resentment.

2. **Average.** Competently kept, drinkable pint but doesn't inspire in any way, not worth moving to another pub but you drink the beer without really noticing.

3. **Good.** Good beer in good form. You may cancel plans to move to the next pub. You want to stay for another pint and may seek out the beer again

4. **Very Good.** Excellent beer in excellent condition. You stay put!

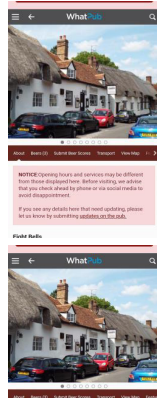
5. **Perfect.** Probably the best you are ever likely to find. A seasoned drinker will award this score very rarely.

How do I submit my scores? In order to submit your scores, you need to login to CAMRA's online pub guide [www.whatpub.com](http://www.whatpub.com) either on a computer or by smart phone. Here you will find a list of over 55,000 pubs from all over the UK. In order to start submitting scores via What Pub you need to:

1. Login. To do this you need your membership number and your CAMRA password.

2. You can then search for your pub by name. Be careful here as there are many pubs in the country which share the same name. The easiest way is to search by the pub name and the town or postcode. The What Pub smart phone web page also gives you the option to search for real ale pubs nearby, very useful if you are in an unfamiliar town.

3. Once you have found your pub a 'Submit Beer Scores' box will appear on the right-hand side of the screen (or on the tab bar underneath the pub photo if you are using a smart phone).



4. Simply fill in the date and your score then as you begin typing the brewery name should automatically appear underneath where you are typing. You do not have to enter the name of the beer you are drinking but if you wish to do so once you have entered the brewery name you should be able to click on the arrow in the beer box and a dropdown list of that brewery's beers should appear. In some cases, the beer you are drinking may be new or a one-off by the brewery so may not appear on the list, if this is the case you can simply type in the beer name. Select the correct one click 'submit score' and your score will be entered into the database.

It is as simple as that. An added bonus is that it will keep a record of your scores so you can look back to see what beers you have had and how you rated them if you want. If, however, you don't feel confident in submitting beer scores yourself, or don't have access to the internet, why not ask a friend who is a CAMRA member and is used to using the CAMRA website to submit scores on your behalf.

When you log in to What Pub you will see a suggestion that you 'Try the new site'. By all means do so, but be aware that finding the pub you are scoring a beer for, and indeed scoring that (those) beer(s) differs slightly from What Pub, and if unfamiliar with beer scoring and What Pub you may not find it as easy to navigate at first as the older What Pub site. The 'new site' is far more encompassing, has more options and intent than What Pub, and deserves a thorough exploration.

Both sites also have an option to submit amendments to incorrect or missing details, such as different beers, different opening times, even different ownership if relevant, via a feedback form. If you use this option you will receive an acknowledgement from CAMRA, and hopefully, from the branch responsible, who can then update the entry from the information provided.

Pubs, Pints, People.

# Give a gift membership to the beer lover in your life!

Beers are best shared with others. So, treat someone you like to a CAMRA gift membership and bring them along to the pubs and festivals that matter.

Set the membership to start on someone's special day!

They'll receive all the great discounts, benefits and vouchers your do, through the post.

Gift a membership today!  
[camra.org.uk/gift-membership](https://camra.org.uk/gift-membership)



# The Wheel

Naphill

Main Road, Naphill, HP14 4QA  
Tel: 01494 562210



Family Friendly • Dog Friendly • Good Beer Guide since 2008 • Real Fires • Excellent smoking area & gardens

“Great locals and great staff for a great atmosphere!”

## Award-Winning Traditional British Pub

“Choose real life or Wheel Life!”

A quirky pub - it's bigger than it looks!  
With 2 bars and a function/dining area.

Excellent homemade food - allergies catered for.



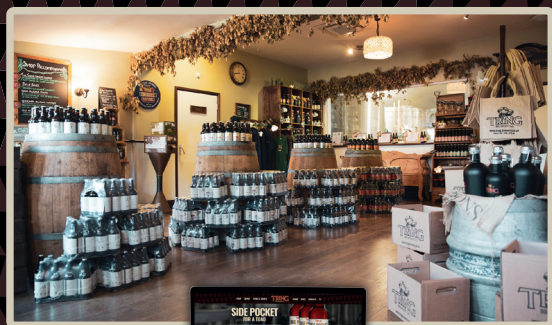
[www.thewheelnaphill.com](http://www.thewheelnaphill.com) [info@thewheelnaphill.com](mailto:info@thewheelnaphill.com)



Bronze Award in Buckinghamshire



# LEGENDARY BEER FROM HERTFORDSHIRE



- ▶ DRAUGHT & BOTTLED BEER (INCLUDING PARTY SIZES)
- ▶ T-SHIRTS, GIFTS & GOODIES
- ▶ GIFT VOUCHERS
- ▶ GOLDEN TOAD MEMBERSHIP
- ▶ LOCAL PRODUCE
- ▶ BREWERY TOURS
- ▶ CIDER AND SPIRITS

ORDER ONLINE >>



In 2025 our Monthly Specials are raising funds and awareness for The Repair Shed



# TRING

BREWERY Co.

Dunsley Farm, London Road, Tring HP23 6HA

☎ 01442 890721 🌐 [www.tringbrewery.co.uk](http://www.tringbrewery.co.uk)







# Oak Taverns

A FAMILY RUN PUB COMPANY BASED IN THAME, OXFORDSHIRE.

*Cask beer takes pride of place in all our pubs.*



THE GREYHOUND,  
WHITCHURCH ON THAMES



THE GEORGE,  
SUTTON COURTENAY



THE SUN,  
WHEATLEY



THE CROSS KEYS,  
WALLINGFORD

THE KINGS ARMS, WANTAGE  
THE CROSS KEYS, THAME  
THE RISING SUN, HADDENHAM  
THE BIRD IN HAND, PRINCES RISBOROUGH THE  
ANGEL, BICESTER  
THE RED LION, CHINNOR  
THE SWAN, FARINGDON  
THE CROWN, MARCHAM  
THE RED LION, YARNTON

For more information please visit [www.oaktaverns.co.uk](http://www.oaktaverns.co.uk)  
Oak Taverns Ltd, 8A Buttermarket, Thame, Oxon.OX9 3EW