

FREE

Swan Supping

Issue 93

Dec 2012/Jan 2013



**CAMPAIGN
FOR
REAL ALE**

COVER STORY
19th Aylesbury Vale
Beer Festival
See page 4

Newsletter of the Aylesbury Vale & Wycombe Branch of CAMRA

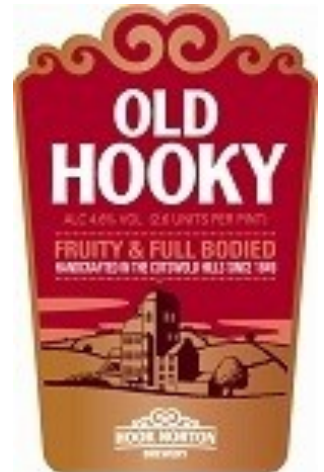
www.swansupping.org.uk

Circulation 6000

The Hub[®]



Merry Christmas!



The Hub Aston Clinton is new venture delivering a broad lifestyle facility to the community, clubs and businesses in the local area - all are welcome and no membership required!

We have created an expansive friendly environment which provides a wide range of hot and cold drinks, healthy snacks, lunches and evening meals.

The Restaurant & Bar, Coffee Shop and Sports Bar are now open for business to the general public 7 days a week.

All our quality meats and poultry are supplied by local credible companies and as The Hub is a Free House, all our beers, ales & wines deliver great value to our customers.

Visit www.TheHubAstonClinton.co.uk for more detail, and we look forward to seeing you soon!

The Hub Aston Clinton, London Road, Aston Clinton, HP22 5HL Tel: 07795 818787

www.TheHubAstonClinton.co.uk

NEWS FROM THE EDITOR



Here we are at the turn of another year when I'm left wondering about where the last twelve months have gone!

Overall it has been an amazing year as not only have we seen the closure of some pubs due to lots of factors I've mentioned too many times in previous issues, but we have seen some reopenings for pubs we though had been lost forever.

We have seen the return of the **Russell Arms**, **Butlers Cross**, the **Bull**, **Stoke Mandeville** and the imminent reopening of the **New Zealand** in Aylesbury which

we even featured on a front cover last year as having been lost.

However we have also seen many losses including the demolition of the **Huntsman** in Aylesbury, the closure of the **Shepherds Crook**, **Crowell**, which was a recent **Branch Pub of the Year**, and the loss of the **Bernard Arms** which is the closest pub to Chequers and has been visited by Prime Ministers and foreign dignitaries.

When you consider the increasing number of breweries in our branch area, the latest ones being **Britannia Ales** at the **Royal Standard of England** in **Forty Green** and **Malt the Brewery** in **Prestwood**, there should be a demand for more and more places to try these wonderful brews. Ever increasing taxes, pub companies trying to extract every last penny from their tenants and supermarkets using alcohol as a loss-leader means that the struggle will continue!

Branch Activities

We are taking part in the mass lobby of Parliament in December (details below) as we endeavour to take our message to the government and make them listen. Saving pubs saves jobs!

We have also continued to fight pub closures by offering as much support as we can to local people trying to keep their favourite watering hole open. We would like as many **CAMRA** members as possible to join in with this campaign as nothing helps more than having more and more people objecting to closures.

We have well over 800 members in our branch and they deserve to have their concerns heard and discussed. This can only happen if they get more involved and let the branch know about them. There is an opportunity to do this at our Annual General Meeting which will be held at the **Kings Head**, **Aylesbury**, on Monday 25th February starting at 8pm. Further details will appear in our next issue, but why not make a note in the brand new diary that Santa is sure to bring you over the festive period.

Pub of the Year

Despite the current financial climate, there are a lot of pubs that still thrive by providing great beer and by making their pubs a joy to visit. We try and recognise the very best of these places in our **Pub of the Year** competition which we will be asking local **CAMRA** members to choose from a shortlist in our next issue. However, which pubs should be contending for the title? If you feel that your pub should be a contender, please contact the editor (details on page 22) and the top five pubs will go to a vote early next year. The previous five winners are not eligible for inclusion as we have so many pubs in our branch that we want to get as many as possible to get involved and win the award. The five previous winners are the **Cross Keys**, **Thame**, **Wheel**, **Naphill**, **Eight Bells**, **Long Crendon**, **Whip**, **Lacey Green**, and the **Hop Pole** in Aylesbury.

Thanks once again to all the people who have given their free time to contribute to the production and circulation of **Swan Supping** and many thanks to Colin Stanford for the festive cartoon in colour.

All the best to you all for Christmas and a very happy New Year!

Cheers!

David W. Roe - Swan Supping Editor

NATIONAL CAMRA NEWS



Mass Lobby of Parliament

As well as local campaigns such as for the **Red Lion** in **Haddenham**, and supporting the purchase of pubs by the community, **CAMRA** run several campaigns on a national level. I have written about the campaign to axe the beer tax escalator in the last issue, and as a direct result of that campaign, we were successful in reaching the required 100,000 signatures on the petition.

As the required threshold was reached, a debate was held at the beginning of November, with an overwhelming majority voting to scrap the escalator, and urging the government to do more to help the country's pubs. Sadly, the vote is not binding on government, so further pressure needs to be applied.

CAMRA have, therefore, organised a mass lobbying of parliament on the 12th December with the aim of informing as many MPs as possible in the effects of current government policy on our locals.

If you are free on the 12th December, it would be very useful to the cause, and of interest to yourself, to join us and see democracy in action. **CAMRA** will reimburse travel costs if you are already a member of the **Campaign for Real Ale**, so long as you keep a receipt, and register in advance on <http://www.saveyourpintlobby.org.uk>.

You also need to alert your MP. You can contact them through the website 'They Work For You' (<http://www.theyworkforyou.com/>). Simply enter your postcode, and fill in the form requesting to see your MP on the 12th. Further information available at the save your pint lobby website.

Don't worry if you are unsure what to say, your presence alone shows parliament how serious we are, and support will be provided on the day with suggestions on topics to raise with your MP.

By keeping this pressure up, we will get policy changed, and help improve the conditions for our pubs, and stop so many closing.

Finally, use your local, or lose your local.

Alexander Wright
Chairman,
Aylesbury Vale & Wycombe CAMRA

National Cider and Perry Pub

The **Royal Oak**, **Wantage**, has been judged as National Cider and Perry Pub of the Year for 2012 after a year of local and regional judging rounds.

Owned and run by landlord Paul Hexter and his wife Frankie since taking over the premises in 1983, the **Royal Oak** is a multi-award winning street corner pub famed for its extensive drinks selection, and also renowned for being an active supporter of local charities, holding regular fundraising events. Stocking a formidable 15 ciders and perries at any one time, the majority of which are sourced from the local area, the owners were praised for their support of local producers and dedication to promoting the real cider industry to customers.

In the quest to become the best cider and perry pub in Britain, the **Royal Oak** beat three other National finalists to the accolade:-

Arkwright Arms, **Sutton cum Duckmanton**
Graduate College Bar, **Lancaster University**
Horns Lodge, **South Chailey**, **East Sussex**

LOCAL BEER FESTIVALS

19th Vale of Aylesbury Beer Festival

At the end of October we held our annual beer festival in conjunction with the **Florence Nightingale Hospice Charity**.

This was our nineteenth festival to help raise funds for the Aylesbury Hospice, and although it wasn't our most successful year, we managed to raise over £3,500.

This was the second time the event had been held at the Bucks County Council sports and Social Club opposite the Ambulance station at Stoke Mandeville Hospital. Following the success of last year's event, we had increased the number of beers available, we didn't get enough people through the door'

This was largely due, not just to bad luck, but to a combination of poor weather, taxis being in short supply on the Friday night due to the Eid celebrations, and road works on Saturday which meant that the 300 bus route was diverted and no longer went anywhere near the festival!

However, the many who came along had a great time 'drinking for charity'! The first beer to run out was **XT Green Hop One**, but the one voted **Beer of the Festival** was **Chiltern Beechwood**. A certificate will be presented to **Chiltern** in the New Year.

Next year will be the twentieth festival and will once again be held at the end of October and as soon as the dates are finalised, they will be announced in **Swan Supping**.

The Big Ten.....

This year's beer festival (pictured top right) at High Wycombe Rugby Club served over the weekend of 16th and 17th November was themed after the club finally reaching its tenth anniversary of festivals.

'The Big Ten' as themed was a really successful event, so our heartfelt thanks go out to all who sponsored, contributed and supported the winter festival.



Most beers sourced for the festival came from breweries not often tasted in our region, such as the champion ales from the **Forge Brewery**, Hartland in Devon and the **Tintagel** brewery in Cornwall, these being personally delivered (with prior tasting obviously!) for the event in a kindly borrowed Nissan Novara truck lent by Mark and Claire at the **Wheel** pub in Naphill.

Thanks also for the borrowed barrels from our closest brewery **Rebellion** who supported our cause, these special deliveries really complimented the festival all held on Agile Scaffolding as well as our local favourites from the **Rebellion**, **Vale**, **Windsor & Eton** and the new **Malt the Brewer** in Prestwood, our newest brewery recently opened in the Thames Valley Region. A wide selection of new and old topped off with three ciders for our apple lovers, these selling out in the early part of Saturday evening.

Once again thanks to you all.

Nick Kidby, Beer Festival Organiser



Live Classic Rock at Wycombe's Newest Venue!

MICHAEL CHAPMAN – Fri 14th Dec 2012 – £10.00

The king of fingerpicked acoustic and electric guitar, the owner of the grittiest, most haunting voice in British folk rock.

FOCUS – Sat 26th Jan 2013 – £17.00

Thijs Van Leer, Pierre Van Der Linden, Bobby Jacobs and Menno Gootjes return for their annual dose of progressive neo-classical rock and roll mayhem!!

COLIN BLUNSTONE – Sun 17th Feb 2013 – £15.00

The voice of the Zombies, one of the many voices of the Alan Parsons Project, and one of the truly great voices of all time in ANY context.

Marvin Turner's WISHBONE ASH – Sat 9th Mar 2013 – £14.00

Performing songs from Argus and beyond, this version features original bassist and frontman Turner, Danny Wilson and ex Landmarq/Gaskin drummer Dave Wagstaffe.

Tickets at Wegottickets, Ticketweb, Stargreen, Ruby Moon and Counter Culture

*The Arts4every1 Centre, Desborough Road, High Wycombe,
Bucks, HP11 2PU 01494 445517*

Merry Christmas to All...

DECEMBER



Also available: Adnams Lighthouse, Adnams Bitter, Youngs Bitter, Bath SPA, Wells Bombardier, Thwaites Wainwright, Old Speckled Hen, Whittlebury Santa's Tipple, Hop Back Red Ember, Batemans Rosey Nosey

JANUARY



Also available: Adnams Southwold, St Austell Trelawny, St Austell Tribute, Young's Bitter, Cornish Trawler, Thwaites Wainwright, B&T Shefford Bitter, Harvies Haggis Hunter, Loddon Dragonfly, Nethergate Growler, Tring Ridgeway

PLUS MANY MORE

DRINKS DISTRIBUTORS & WINE MERCHANTS
AN INDEPENDENT FAMILY BUSINESS

TELEPHONE: 01296 630013 WWW.DAYLADRINKS.CO.UK



LOCAL NEWS

ASTON CLINTON

The **Hub** (pictured below) in Aston Clinton park, is a new venture delivering a broad lifestyle facility to the community, clubs and businesses in the local area.

They have created an expansive friendly environment which will provide a wide range of hot and cold drinks, healthy snacks, lunches and evening meals. The Hub Bar, Sports Bar, Coffee Shop and Restaurant is now open for business to the general public seven days a week.

It offers two real ales (*Sharps Doom Bar* and another), free Wi-Fi, free car parking and an outside smoking area. As well as breakfasts, lunches and evening meals, tea, coffee and light snacks are available from 8am.

AYLESBURY

The **Broad Leys** is currently offering *Loddon Hoppit*, *Sharps Doom Bar* and either *Smuggler* or *Roasted Nuts* from *Rebellion*.

Vale have appointed a new manager

for the **Hop Pole**. He is Eric Mills and brings a wealth of experience running real ale and *GBG* listed pubs. Richard and Lisa are leaving after their second successful time in charge of the pub to a new venture in the Cotswolds. They have done a great job there and we all wish them well for the future.

We have had some recent good news to report with the relicensing of the **New Zealand**, a pub that had been sold off by *Charles Wells* for housing. The plans had been rejected by the District Council, so the owners decided that the local community wanted their pub back. *CAMRA* spoke in support of the application that was granted in November. The pub should be reopening in time for Christmas.

The **Queens Head** has reopened under the control of Ellie Cook whose father runs the **King & Queen** in Wendover. The pub is open from noon every day and closes 10.30pm on Sunday, 11pm Monday to Thursday and there is a late licence on Friday and Saturday. They are serving two real ales, and *Black Sheep Bitter*, *Hook Norton Hooky* and *Old Hooky* and *St Austell Tribute* have

already appeared. They also hope to have an extra guest beer available over the Christmas period. Fresh homemade food is served daily from 12-3pm and 5-10pm Monday to Saturday and 12-5pm on Sunday.

The **Steeplechase** is also in danger of being lost as a potential pub forever. Having been closed for four years now, it is the last pub on the south west side of Aylesbury, the **Skinny Dog** (*Greyhound*, *Priory* etc.) and the **Huntsman** having been lost. The change of use application to become an Islamic prayer centre is still open for objections. To register your objection, visit the application on the website <http://bit.ly/Qa7q0N> and then click on the comments tab. You will need to register if you have not used the site before. Objections should be based on the local plan available from the council website. This plan specifically mentions pubs as a valuable community resource that should be retained wherever possible for the use of the whole community.

CRYERS HILL

The **White Lion** has reopened after having been closed for nine weeks. The pub is open all day, every day, offering food at lunch time, home-cooked pub grub and a roast on Sundays. There is an ever changing selection of ales with *Courage Best* on all the time, and since they have been open they have had four handpumps on all the time, and the ales featured have included *Fullers London Pride*, *Skinnners Betty Stogs*, *Butcombe Best*, *Shepherd Neame Spitfire*, *Sharps Doom Bar*, *Taylors Landlord*, *Brakspears Best* and *Jennings*

Cumberland Ale. They show most live sports, have pool and darts and are dog friendly. They also have quiz nights and regular karaoke (check their website www.whitelioncryershill.co.uk for ales that are on and forthcoming events).

EMMINGTON

The **Inn at Emmington** continues to celebrate its first *GBG* listing in the 2013 edition. It serves *Fullers London Pride* and *Brakspear Bitter* for the regulars. As an alternative a *Rebellion, Vale* or *XT* is on the third handpump. *XT 6* was in splendid condition when we visited as part of the Oxfordshire Crawl recently (pictured above right).

HADDENHAM

Don't miss Haddenham Winterfest on Saturday 8th December 2012, 12 noon to 5 pm, in the Village Hall. Event also comprises a **Christmas Fayre** with a wide range of stalls selling Christmas gifts, food and other enticing goodies. Don't forget you can reach the festival either by train on the Chiltern Line alighting at Haddenham and Thame Parkway which is a 15 minute walk or come by bus on the Arriva 280. In keeping with all good festivals at this time of the year, mulled wine will also be available.

At the **Green Dragon**, Adam and Emma serve three real ales from their proper underground cellar. There is always an *XT* available as well as *Sharp's Doom Bar* and *St Austell Tribute* for instance. On 22nd December the Fleet Booze Hound blues band make their Buckinghamshire debut.

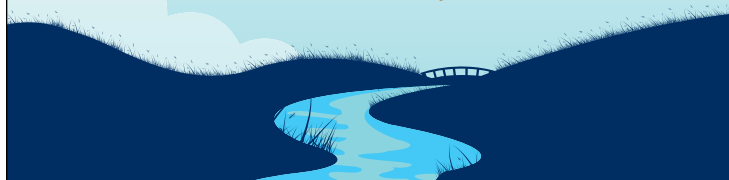
The **Kings Head** serves *Fullers London*



**FRESH NEW LOOK,
SAME GREAT TASTE!**



CHEERS AND ENJOY!



SWAN & CASTLE

Lower Street, Quanton HP22 4BJ



Christmas Eve Noon until Midnight

Karaoke that night from 8pm

Christmas Day Noon-2pm

Boxing day Noon until Midnight

27th and 28th Noon-3pm, 5pm-Midnight

Saturday 29th Noon until Midnight

Vinyl night bring your record collection!

New Years Eve Noon-3pm 5pm-close

Nibbles on the bar, jukebox music and fancy dress or evening wear

New Years Day 2pm-11pm

Tel: 01296 651064

Email: swanandcastle@hotmail.co.uk

www.theswanandcastle.com

Pride and *Sharp's Doom Bar* plus a guest, currently *Brakspear Bitter* 3.4% ABV, and will offer free 'The Cloud' WiFi from 18th December.

At the **Rising Sun**, bacon rolls will be available from 10am on the day of the Winterfest. A DJ will be on in the evening plus four or five extra real ales. Now stocking **Tring Brewery** ales alongside *Vale*, *XT*, *Rebellion* and *Loddon* – great support for *Locales*. All ales served straight from the barrel at £2.85 a pint. Darts, Poker evenings and pool, as well as live music evenings, all add up to make the **Riser** a fun place to visit.

The **Red Lion** is currently under threat, having escaped one planning application already. **CAMRA**, and a number of local residents have objected to the plans, and we will be attending the planning meeting in December to object in person.

The **Rose & Thistle**. The Occasionals will be playing after the Winterfest. The **RAT** serves *Greene King IPA* and *Hardys & Hansons Olde Trip* and a guest. Recently sampled by our roving reporter was a very pleasant *Belhaven St Andrews Ale* at 4.6% ABV. Listen to or join in with Haddenham Shamrocks 2nd and 4th Tuesdays.

HIGH WYCOMBE

The **Arts4Every1 Centre** (AKA the **Wycombe Community Arts Centre**), is an up-and-coming centre for the arts, creativity, and enterprise. Currently still under development, the centre's team will be increasing its usage to incorporate local theatre productions,

fashion shows, corporate bookings, a business café, cinema, and, last but not least, high profile music events. Both the theatre and hall's bar facilities are sponsored by the local **Rebellion Brewery**, who have been very supportive of this new development.

MARLOW

McMullens Brewery from Hertford have purchased the **Britannia** pub on Little Marlow Road and have put in a lot of time refurbishing to their high standard of a superb family dining public house complete with the brewery's range of real ales. Opening day was Thursday 22nd November and the place was buzzing on that first evening. The three regular beers on handpump are :- *AK* @ 3.7% ABV, *Country Bitter* @ 4.3% and *IPA* @ 4.8% - with the fourth handpump reserved for their seasonal beers. The managers are Steve and Karen so a hearty welcome to Marlow to you and to all your staff.

Watch out for **McMullens** second presence in Marlow as they hope to open **Baroosh** in the High Street before Christmas and this will also feature their range of real ales. Why not check them both out on our pub crawl in January?

PRINCES RISBOROUGH

The **George and Dragon** has a 'You could run this pub!' board posted outside.

THAME

Chinnor RFC, at OX9 3JL, a 15 min walk from the town centre serves *Vale Wychert* and *Brakspear Bitter*. Come and support Chinnor who are currently



lying mid-table in National League 2 South. Games are really exciting and of a very high quality.

The **Cross Keys** held a successful beer festival over the weekend of 8th/9th of November and in the run-up to Christmas, you can expect to find many seasonal ales from breweries around the country. Visit the refurbished gents and take note of the sign above the urinals.

XT 6 could be found at the **James Figg** together with *Vale Best*, *Sharps Doom Bar* and a cold *Purity Mad Goose*.

The **Swan** had all five handpumps on the go recently, serving *Wadworth Swordfish* (5.0), *Skinners Betty Stogs* (4.0), *Rebellion IPA*, *Brains Reverend James* and (it seems to be everywhere) *Sharps Doom Bar*. The *Swordfish* and *Betty Stogs* were both in excellent condition. The restaurant should be opening sometime before Christmas doing lunches 12 till 3pm and evening

meals 5.30 till 9pm. Nibbles and sandwiches are available 12 till 5pm.

TRING

Tring Rugby Club in Cow Lane are holding their first Winter Beer Festival from Friday 18th to Sunday 20th of January. The club is a half-mile walk up Station Road from the **Robin Hood** where the 61 bus route between Aylesbury and Luton stops outside. Twelve beers, selected by **Tring Brewery**, will be available.

WOOBURN COMMON

The **Royal Standard** will be stocking **Rebellion Roasted Nuts** as a permanent ale in December and will be doing a **Crouch Vale** week from Monday 3rd to Sunday 9th of December. Basically this involves having at least one **Crouch Vale** beer on all week, which include *Brewers Gold*, *Amarillo*, *Bravo*, *Yakima Gold*, *Blackwater Mild* and *Palisade*!

GBG 3 Years running.
Branch pub of 2012.
8 ever changing ales.
5 real ciders.
Real fire.
Wednesday quiz night.
Hot cider, Winter Pimms
and mulled wine.

THE CROSS KEYS. THAME. OX9 3JS 01844 218202

BEATING THE BEER BOUNDS OF BUCKINGHAMSHIRE



I can't remember exactly when I decided to try to drink a beer from each and every one of the breweries in our fair county, but I do know why. It's the beer-drinker's equivalent of the ancient beating of the bounds ceremony (a tradition I was pleased to see the Mayor of High Wycombe maintaining earlier this year); a way of getting to know your county. Plus, of course, it's a great way of supporting the **Locale** campaign!

My location, however, seemed to be a slight obstacle to my plan. Living in the far south of the county and commuting to work in Reading meant that it could be hard to obtain beer from the breweries in the north of the county. I could of course have simply rung up the breweries and driven round picking up the beers, but this seemed like cheating. Having made myself aware of the breweries in my challenge, I now wanted to discover the beers in their natural habitat – ie find them by chance as I went along.

I was surprised to discover that I had only tried one of our breweries before; my local brewery, **Rebellion**. Their beers are very widely available in the local area, and have also cropped up frequently in Reading. My favourite of their regular brews is probably *Smuggler* (4.1%) – a copper beer with autumnal flavours of oak, sweet apples, crisp dry leaves and a hint of smoke.

The next brewery I tracked down in the most surprising of circumstances – at a solicitor's stand at the Henley show. To my astonishment, the solicitor had set up a cask of **Old Luxter's Best Bitter** (4%) in his stand and was pouring free glassfuls for astonished passers-by! The beer was possibly not in the best condition, but nevertheless had a gentle, comforting mouthfeel and was pleasantly thirst-quenching on a hot day.

One birthday I was treated to a tour of **Chiltern Brewery** by the outlaws (my parents-in-laws nickname for themselves). My father-in-law, my brother and myself had a wonderful time sampling all the beers on offer – I particularly enjoyed the *Nut Brown* (3.9%), a top-notch traditional mild with a creamy mouthfeel, lots of rich earthy malts, nuts and chocolate, and a dry finish. **Chiltern** have since become one of my local favourites; their beers are rare in the south of the county, but I always seek out their latest offerings on my annual excursion to the Reading Beer Festival.

Considering it's one of the larger Buckinghamshire brewers, it took a long time before I made acquaintance with **Vale** – and when I did finally find *Gravitas* (4.8%) it was in the distant **Old Road Tavern** in Chippenham, Wiltshire. Having had their cover blown, **Vale** clearly decided it was time for the secrecy to end, and started to flood the **William Robert Loosley** and **Bootlegger** in High Wycombe with their produce. My favourite of the many **Vale** brews that I had the pleasure to try was *Special* (4.5%), an appropriately named copper beer bursting with toffee apple, raisins and pepper, with a good earthy bitterness to finish.

My wife bought me a couple of bottled beers from **Oxfordshire Brewery** (despite the treacherous name, it's actually located on our side of the border!). Unfortunately they were rather thin, watery and sweet; as they

weren't bottle-conditioned I felt I wasn't tasting this brewery at its best. Sure enough, when I discovered a couple of their beers – *Pride of Oxford* (4.2%) and *2012* (4.5%) – on cask at the **William Robert Loosley** in Wycombe on a branch social, they were perfectly decent bitters; although possibly a little on the sweet side for me, other branch members were certainly wolfing them down!

There were just a couple of northern brewers left to complete my quest (I thought). My brother Jim had helpfully moved to Milton Keynes, meaning that I had free bed and breakfast available after the Milton Keynes beer festival. The **Concrete Cow** brewery was clearly very popular locally, and deservedly so. The *Old Bloomer* (4.7%) that I managed to snatch just before all of their beers sold out was a very tasty brew indeed – very malty, with lots of sweet treacle well balanced by a dry, dusty straw finish. I was less enamoured of the beers from the new **Hopping Mad** brewery (although Jim liked them) – even the best of them, *Hopnotch* (3.8%) was a rather cloying mix of butter, vanilla and biscuit.

And that, I thought, was that. All breweries 'bagged'. Beer bounds of Buckinghamshire beaten, alliteration achieved and all that. But no – it turned out that **Hopping Mad** was

simply the first in an explosion in the number of microbreweries in the area, mirroring a nation-wide trend. In quick succession, **Buckingham, XT, Aylesbury Brewhouse** and **Britannia** burst into existence. To my joy, my quest would continue.

It wasn't long before **XT** made an appearance at a branch social at the **Bootlegger**. The brewery was set up by a brewer who formerly worked for the superb **Windsor & Eton** brewery, so I had high expectations. His beers did not disappoint – the *XT 3* (4.2%) was a tasty golden ale, with floral notes to start, and lots of refreshing lemon set against a comforting vanilla base and a dry finish.

Aylesbury and **Buckingham** breweries had to wait for this year's trip to the Reading beer festival. I was able to compare a mild from each of these brewers. For me, **Aylesbury Brewhouse Magnetic North** (3.8%) was the better of the two, a traditional dark brown mild with a smooth mouthfeel and a chocolate and roast malt flavour. **Buckingham Mild** (4%), again brown in hue, still had mild chocolate and roast malt flavours, but these sat uneasily against some green leafy hops and a faint but distressing hint of wee wee (although maybe that was the festival toilets!). However, I've heard great things about **Buckingham Golden** (3.8%), so I'll definitely give the brewery another go if I get the chance.

Britannia Brewery is located at the **Royal Standard of England**, Forty Green near Beaconsfield, and makes beers only for the pub. I was therefore delighted when a branch social offered me the chance to visit the pub – not least because this venerable institution has to be one of Buckinghamshire's most memorable pubs (and due to its remote location, one of our best kept secrets!). After enjoying the peaceful walk along green lanes and paths from Beaconsfield station, I celebrated the end of my quest with **Britannia Golden Ale** (4.2%) – a pleasantly sweet yet hoppy beer with a lemon and straw flavour.

So – there it is, I've done it – for the time being, anyway. Yet as I sit here typing this article, I'm hoping that a search of Google will reveal that yet another wonderful local brewer is about to open on my doorstep (unfortunately, at the moment Google says 'no') and I can restart my quest. But until this happens, I'll lay down a challenge – have *you* tried all your **Locale** breweries yet? Have you beaten the beer bounds of your county? And if not, why not?

If you fancy taking up the challenge, the best place to start is by coming to branch meetings – see the branch calendar elsewhere in this magazine for details.

Of course, as soon as I'd finished this article, a new Bucks brewery was bound to crop up. I'm now on the hunt for beers from a new establishment in Prestwood called **Malt the Brewery**. The quest goes on... hurrah!

Anth Duffield

Lynn and Nigel welcome you to

THE BULL

Risborough Road, Stoke Mandeville HP22 5UP



Four Real Ales

Homemade Bar Food

Beer Garden Sky TV Live Music

Public and Lounge Bars

Families welcome

Tel: 01296 613632

website: www.thebullstokemandeville.co.uk



ROYAL STANDARD AT WOOBURN COMMON

Wooburn Common Road,
Wooburn Common,
High Wycombe,
Bucks. HP10 0JS
Telephone: 01628 521121
www.theroyalstandard.biz

*Merry Christmas from everyone
at the Royal Standard, Wooburn Common*

**Ten beers, including permanents Summer
Lightning, Tribute and a Dark Star Ale**

**Crouch Vale Week
3rd - 9th December**

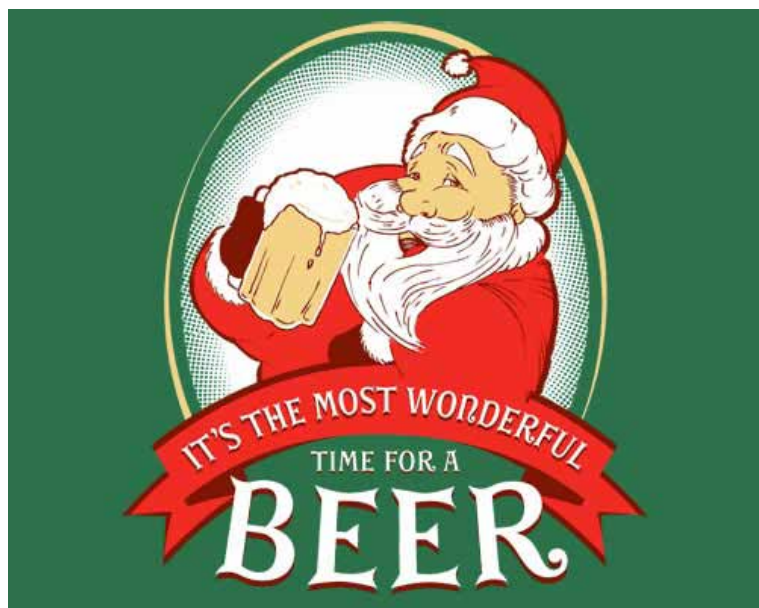
For further details check out our website

www.theroyalstandard.biz

Open all day every day

THE WHIP INN

PINK ROAD LACEY GREEN BUCKS HP27 0PG



WISHES EVERYONE IN THE
PUB BUSINESS FROM -
CUSTOMERS -
STAFF - BREWERS -
DRAYMEN - SALESMEN -
SUPPLIERS - PUBLICANS
BEER MAGAZINE EDITORS
AND ANYONE ELSE WHO
STRIVES TO PUT THE
GB (GREAT BEER) BACK
INTO BRITAIN

A VERY HAPPY MERRY & PROSPEROUS XMAS!

LOCAL BREWERY NEWS

Vale Brewery

December is the month when *Good King Senseless* makes its regular and very welcome appearance. This 5.2% regular seasonal beer is always well received, and the strong dark brew will definitely warm and brighten your spirits again this year.

For those with a preference for a lower strength beer *Vale's* month special is *Old Frost Moon*.

At 4% this is a darkish beer, malt to the fore and brewed with all English malt and hops. Look out for Santa who will make an appearance on some of the pump badges.

Following the success of the low strength *Brill Gold*, *Vale* has followed this up with *Brill Amber*.

This 3.4% smooth ale proves that taste need not be sacrificed when producing a low strength beer.



In January *Vale* will again start the year with a golden brew and the one planned is a 4.1% bitter called *King of Snow*.

Vale Brewery was chosen by the beer specialists at *Nicholsons* to brew an exclusive Christmas beer. *Nicholsons* and *Vale's* head brewer David Renton devised the beer together and a Christmas warmer was chosen. At 4.8% the resulting beer, named *Five Gold Rings* was brewed in early November and launched in London on the 21st of November. The beer will be available only in *Nicholsons* pubs throughout December or while stocks last.

A Locale beer competition is held by Oxford *CAMRA* at their beer festival every year. *Gravitas* won Gold in 2010, *Gunpowder* was fourth in 2011 and *Vale* success continued in October this year with *VPA* winning Gold.

The Haddenham Winterfest is on Saturday 8th of December and as well as featuring several *Vale* and

Brill Beer ...

Award winning local beers direct from Vale Brewery this Xmas

Please call the Brewery on 01844 239237 to order in advance.

REAL ALE AT HOME - From only £1.50 a pint. Available in Minipins (17 pints), Polypins (35 pints), and Firkins (70 pints).

BOTTLED REAL ALE - £24 a case, 12 bottles mixed to your taste.

AVAILABLE - Wychert, Black Swan Mild, VPA, Edgars Golden, Black Beauty Porter, Grumpling, Gravitas and our Xmas Special - Good King Senseless.

ALSO AVAILABLE - A large selection of fine wines, scottish malt whisky and British and Foreign bottled beers.





VISIT US AT OUR BREWERY SHOP
 Tramway Business Park, Ludgershall Road, Brill, HP18 9TY
 Tel: 01844 239237
 e-mail: info@valebrewery.co.uk www.valebrewery.co.uk

Opening hours.
 Mon to Fri 9.30am to 5pm, Sat 9.30am to 11.30am.









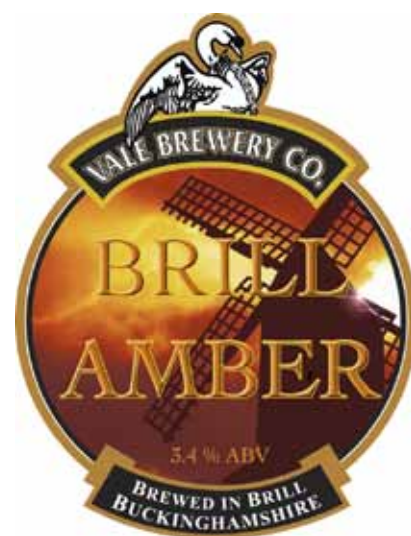






Aylesbury Brewhouse beers, *Vale* will be selling bottles and taking orders for Christmas.

The *Vale Beer Club* goes from strength to strength. Existing membership benefits continue, including discounts on purchases and access to member's events. In addition a new level of membership is being created. Gold membership will offer an exclusive Polo shirt, and engraved *Vale Brewery* beer mug and access to a program of events throughout the year.



Fly Fishing with Jim

The gift that gives a lifetime of memories

For Grandma, Grandpa, Dad, Mum,
Brother, Sister, Boyfriend...

For an anniversary, birthday,
or just to say thanks

- One-to-one Fly Fishing Tuition on a private lake
- Includes Breakfast & Lunch
- Bank, Boat and River fishing for Trout
- Take a couple home and/or catch and release
- Age 11+ welcome - Jim is CRB cleared

Telephone: 01296 770214 Mobile: 07898 637810

Website: www.msc-beesknees.co.uk/?page_id=19

Email: fly.fishing.with.jim@gmail.com



George & Dragon, Quainton

www.georgeanddragonquainton.co.uk

We are now a Free House!

5 real ales. Good Beer Guide listed

Food served all sessions (except Sunday eve or Monday)

Winter opening hours:

Closed all day Monday. Tuesday-Friday 12 – 2:30, 5 – 11pm

Saturday 12 – 11pm, Sunday 12 – 3, 6 – 10:30pm

Number 16 bus stops outside

**Christmas
Menu Now
Available**

The Green, Quainton,

Bucks. HP22 4AR

Tel: (01296) 655436



Constantine & Louise Lucas welcome you to

The Hampden Arms

Great Hampden, Great Missenden HP16 9RQ

Tel: 01494 488255

email louise@thehampdenarms.fsnet.co.uk

www.hampdenarms.co.uk

Full À La Carte and Set menus plus blackboard specials

Lunchtime snack menu

Sunday roasts

Food served 7 days - lunch & dinner

Well kept ales & extensive wine list

Large beer garden

Beautiful rural setting

**Saturday 1st December Switching on of the Christmas lights followed by
festive Karaoke from 6.30pm**

Boxing Day quiz 8pm in aid of the MPS Society.

We will be open all over the Festive period for food & drink.

Set Christmas menus available from 1st December for lunch & dinner.



TRING *The First Twenty Years!* BREWERY Co.

The press release from **Tring Brewery** on the occasion of their twentieth anniversary takes us back to that time most eloquently:

On a grey November morning a distant crackling radio brings news of rising unemployment and a government in denial, ironically followed by the chart topping hit, "Would I lie to you?".

A few days earlier Bill Clinton was sworn in as the 42nd President of the United States blissfully unaware of a career defining incident with a girl called Monica.

Outside a car passes, Bohemian Rhapsody playing on a cassette, the boys inside reliving a scene from comedy hit of the year, Wayne's World. At the same time a heady concoction of malt, water, yeast and hops were brought together in perfect unison. A week later the first Tring ale was born, another week on and it had been consumed. People wanted more. This was 1992. This was the beginning of Tring Brewery.



The **Tring Brewery Company** was founded in 1992 and after a 'brewing drought' of over fifty years it once again brought the traditional art of brewing back to the picturesque West Hertfordshire market town of Tring.

Started by Richard Shardlow, an experienced brewer having worked for **Greene King**, **Ruddles** and **Devenish**, the brewery was joined by Andrew Jackson from **Whitbread** in 2000 who has both a brewing and retail background.

Ever since the first mash, the team at **Tring Brewery** has focused on developing a wide range of beautifully crafted and consistently excellent beers. The evolution of the range has resulted in a core of award-winning beers supplemented by the ever-popular monthly and seasonal specials.

The brewery has enjoyed increasing success over the past years through its reputation for high and consistent product quality forged through a commitment to the art of traditional brewing with only the finest ingredients. A number of awards, both local and national have been achieved.

Tring Brewery's ales are prepared by the traditional method, using malted barley, hops, water and yeast. The finest ingredients, most of which are home grown, include hops from Kent and Worcestershire. This, in conjunction with Tring's ideal hard water, provides the perfect formula for classic ales.

The majority of the names for **Tring Brewery's** ales have been described as somewhat unusual. They are all themed around intriguing ghostly tales, myths and even sayings from the rich history of Hertfordshire and a few from local tales in Bedfordshire and Buckinghamshire.

Their colourful triangular pump-clips start out as watercolours. They are very distinctive which make them easily recognised when entering a pub, although they also have a more traditional style of pump-clip for those who prefer something a little more understated.

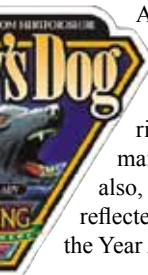
Every year they produce upwards of 25 different beers. Some of these are core products, others seasonal, monthly or event specific brews.

Probably one of **Tring's** most iconic ales, *Death or Glory* takes its name from the regimental motto of the Queen's Royal Lancers and was first brewed back in the early 90's. The idea for the beer was conceived by a previous director of the brewery, Kerr Hill, a former Lancer himself. Ever since, it has traditionally been brewed every year on October 25th to commemorate the anniversary of the Charge of the Light Brigade, when in 1854 the 17th Lancers made their fateful charge into the Valley of Death.

The Queen's Royal Lancers was formed in 1993 by the amalgamation of the 16th/5th and 17th/21st Lancers. The regiment's Colonel-in-Chief is Her Majesty the Queen.

Until recently *Death or Glory* had only be available on draught to local pubs and friends over Christmas and New Year, however, late in 2007 they were approached by the QRL's to see if they could bottle the beer for the Officers and Sergeants Mess. They were delighted, so by special appointment to the Queen's Royal Lancers, **Tring** now offer *Death or Glory* ale in 330ml bottles. The strength of 7.2% abv comes from the fact Kerr Hill was part of the 17th/21st Lancers.





A real turning point came in 2010 when bound by the limiting capacity of the original site (pictured top left), **Tring Brewery** relocated to its current location on Dunsley Farm, Tring. Despite the shift from an 8 to 30 barrel plant (pictured top right), the brewery has maintained its exacting standards and maintained its position not only as a producer of great beers but also, increasingly, a community focused local business. This was reflected in them winning the BEA Hertfordshire Small Business of the Year Award.

In 2012 **Tring** championed the use of UK hops through their monthly special program where each month they produced a new beer, crafted to highlight the best characteristics of a single UK variety. Working in conjunction with hop merchants and growers, this is something they will continue through 2013. They will also be using premium grade Maris Otter barley sourced from a farm no more than two miles from the brewery.

Old Icknield Gold was brewed to celebrate the 20th anniversary and was available in cask throughout November. This golden 4.1% crisp, Sovereign hopped ale is also available in bottles from the brewery shop.

Brand leaders such as *Side Pocket for a Toad*, *Ridgeway Bitter*, *Death or Glory* and *Colley's Dog*, remain in the line up for the future, however the brewery are hinting on some changes over the next year, including the release of a number of 'staff inspired beers'.

Also keep a look out for a long awaited members club.

Their brewery shop, pictured below, also provides beer, merchandise, mustards and pickles etc. to the public. It allows you to enjoy all of their beers in the comfort of your own home and they also sell a range of gifts such as glasses, pottery jugs and clothing.

The shop is open at the following times: Monday - Tuesday 11.00am – 5.00pm, Wednesday to Friday 9.00am – 6.00pm, Saturday 9.00am – 5.00pm.

Using the twenty year celebration as a suitable excuse, we are going on a branch trip to the brewery on Saturday 2nd of February. Please contact the editor (contact details are on page 22) if you wish to come along.



BEST OF BRITISH

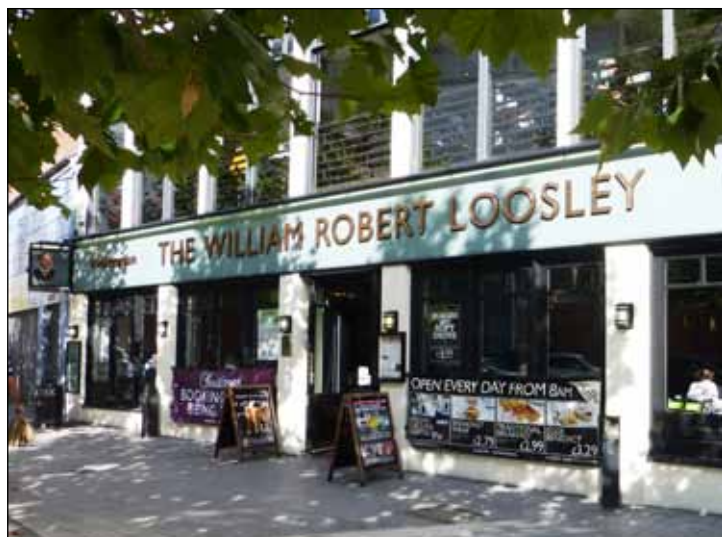
FOR 2012, EACH OF OUR SPECIALLY CRAFTED MONTHLY BREWS WILL BE SINGULARLY HOPPED USING THE VERY BEST OF BRITISH HOPS

Available from local pubs and our brewery shop.

TRING
BREWERY Co.

www.tringbrewery.co.uk

HOW MANY CAMRA MEMBERS CAN YOU FIT IN A.....



The branch held two Saturday socials in October and November. Bizarrely, both included episodes that posed the fascinating, but potentially uncomfortable question of ‘how many fat-bellied **CAMRA** members can you squash into oddly confined spaces’. For the first answer to that conundrum, read on (the second will remain a mystery until a future *Swan Supping*).

The beginning of October was *National Cask Ale Week* and the branch decided to mark this occasion with an all-day crawl along the route of (what we thought was) the most frequent and reliable bus service in the branch area – the Arriva Line 300 between High Wycombe and Aylesbury.

Not only are there some great cask ale pubs in the towns at both ends of the route but the bus passes plenty of *Good Beer Guide* pubs in the more rural parts of its route.

We started with the two *Wetherspoon* pubs in High Wycombe – the **Falcon** and the **William Robert Loosley**. With our **CAMRA** members’ 50p off a pint of real ale vouchers it would be rude (and profligate) not to.

We arrived at the stop for the 300 bus to Naphill suitably lubricated. Unfortunately, it appears that our bus wasn’t. The service is scheduled to run every twenty minutes during shopping hours on a Saturday but we watched our planned departure disappear from the dot matrix sign with no sign of our bus actually arriving. So we waited – thirstily.

After only two pubs, our bladders hadn’t yet registered at the high end of the P-Richter scale, which was fortunate because the next bus also failed to arrive on schedule. By this time we’d spent almost as long at the bus stop as in the pubs and, as fascinating as the delicacies illustrated outside Dennis’s Kebab Centre were, the attractions of staring at Oxford Street’s fast food joints began to pall, especially when we were relatively sober.

Eventually, to resounding cheers, a 300 bus turned up after about forty minutes. The driver told us that the delay was because a vehicle operating an earlier service had broken down. The ripples of the bad karma emanating



from this mechanical malfunction were to affect us for the rest of the day.

We arrived at the **Wheel** at Naphill for a pleasant couple of lunchtime pints. After some welcome sustenance of the solid variety we set off intending to walk to the **Black Lion** down the road – with the exception of Noj, who had set off to form his own advance guard.

Perhaps having heard about our earlier 300 experience one of our fellow customers offered us a lift in his car. Unfortunately, it was a tiny, sporty model – a description that’s rather the opposite to most of ourselves.

But what’s a bit of discomfort when you can get the next pint ten minutes earlier? Eddie got the front seat. It was a challenge to shoehorn Antony and I into the back seat even before Simon tried to squeeze his somewhat more athletic frame between us. During the journey he must have felt some empathy with an apple squashed in a cider press (fortunately no juice oozed out).

We emerged from the car like characters released from a tin in a Tom and Jerry cartoon. After a pleasant pint of *Rebellion* in the **Black Lion** and a little autumn sunshine in the beer garden we walked hopefully to the bus stop for our Lacey Green leg.

Thirty minutes and no bus later, our hopeful band of five were still waiting. A Naphill resident drove pitifully past us a couple of times with a motorcycle and sidecar. Such was our growing impatience that we were reduced to considering if we might try and squeeze our collective bellies into that unconventional form of passenger transport.



Eventually a bus appeared like a moving mirage in the distance and we finally reached the mid-afternoon solace of the **Black Horse**. Suitably refreshed, our next stop, the **Whip**, was fortunately within walking distance – so no need to hang around hopefully at bus stops.

The **Whip**’s six handpumps – mainly serving beers from small and micro-breweries pull in the punters and even early on Saturday evening it was standing room only. Then it was on to the newly reopened **Bull** at Stoke Mandeville – with a couple of our number returning to the southern fringes of the branch from whence they came, we were small enough a number to fit comfortably in a car. Which we did – Eddie’s wife, Christine, stepped into the 300 sized breach and was kindly able to drive us there.

Like an Olympic relay, we handed on the baton – in the svelte shape of Simon – to the Aylesbury contingent. He gamely caught a 300 bus (which appeared to have reverted to their scheduled timetable by then) into Aylesbury to heroically enjoy a few drinks with Dave Roe and Carl and Sandra Griffin at the **King’s Head** and **Hop Pole**.

So – plenty of great pubs serving excellent beer that showed that the values of Cask Ale Week are really motoring in plenty of our pubs – a shame the same couldn’t be said of the broken-down bus.

Charlie Mackle

WINTERFEST

Haddenham Winterfest 2012 takes place on Saturday, December 8th, featuring 24 real ales, 10 ciders and a winter market.

Organised by Haddenham Beer Festivals Trust, a registered charity, this year's Winterfest is expected to attract at least 800 people.

While not on as large a scale as the trust's annual summer festival, the Winterfest is always hotly anticipated as a more intimate village event to which everyone is welcome.

The event features a Christmas-themed fair with plenty of food and drink on offer as well as a number of crafts and entertainment from start to finish.

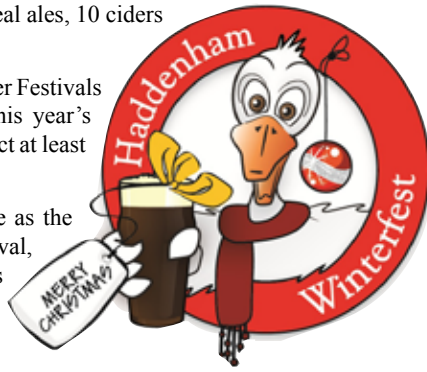
With plenty of protection from the weather available Haddenham Winterfest is the perfect place to enjoy a fine selection of seasonal ales, ciders, bottles and draught lager, mulled wine, teas and coffees in a festive atmosphere.

Doors open at 11am with the last entry at 5pm, or when the beer runs out. Tickets cost £6 on the door or £5 in advance from a variety of sellers.

Nicholas Moore, trust committee member, said: 'We are a registered charity that raises money for good causes in Haddenham and the surrounding community.'

'It should be a really fun day and we're really looking forward to seeing everybody there.'

Visit <http://haddenham-beer-festival.co.uk/> for more information; including the chance to see the list of beers on offer.



The Queens Head Wing

www.thequeensheadwing.co.uk

01296 688268

****Award Winning Pub****



2 Permanent Real Ales plus changing guests including Tring, Vale & Hopping Mad Breweries

Friendly, welcoming atmosphere

Fresh Home-cooked Food served everyday with Daily Specials

Beautiful Beer Garden

Good Beer Guide Entry for 6 years running

**Peter and Neuza welcome you all to the
Horse and Jockey, Tylers Green HP10 8EG
Tel: 01494 815963**

**We have five regular Real Ales plus one Guest Ale
Food Served every session. Food Special Nights
Open all day Friday, Saturday and Sunday
Good Beer Guide Listed**

Quiz Night 1st Thursday in the month

VILLAGE PUB OF THE YEAR

The **Unicorn** in Cublington has been named the overall winner of the Aylesbury Vale District Council's annual village pub competition, sponsored by **Dayla**.

A beautiful 17th century inn with a wide range of real ales, outstanding food, a popular quiz night, regular live music events, a delightful beer garden and more, the **Unicorn** proved just too good to compete with.

Councillor Pam Pearce, Cabinet Member for Community Matters, said: 'This is the 15th year we have run this competition and we have seen some excellent pubs, but the Unicorn has set a new standard. 'It's a wonderful example of what can be achieved through hard work, determination and self belief. If you want to see how to run a successful pub during



these difficult times, then look no further than the **Unicorn**.

'Local pubs are at the heart of our neighbourhoods and this competition shows what makes a great village pub tick.'

The competition, which has been a big success since it was launched by the council in 1997, marks the valuable role a village pub can play, both as a community asset and as part of the tourism offer for the district.

Tim Cooper, Managing Director of **Dayla** commented 'We are delighted to be sponsoring this year's Village Pub Competition. At a time when pubs are closing across the UK, it is really great to see so many flourishing.'

This year the council received over 700 nominations for 35 pubs – the highest number of entries in the competition's history.

The 35 were whittled down to 20 finalists by the judging panel and winners in six different categories were selected.

The full list of winners is:

- **Best overall pub:** Unicorn, Cublington
- **Runner-up overall pub:** Old Thatched Inn, Adstock
- **Best community pub:** Bell, Chearsley
- **Runner-up community pub:** Red Lion, Bierton
- **Best food pub:** Old Thatched Inn, Adstock
- **Runner-up best food pub:** Chequers, Weston Turville
- **Best speciality food:** Swan, Grendon Underwood
- **Best website:** Old Thatched Inn, Adstock
- **Website runner up:** Pheasant, Brill
- **Ones to watch:** Boot, Soulbury, Seven Stars, Dinton, Pilgrim Pub and Restaurant, North Marston

All finalists will be featured in the 2012/13 Aylesbury Vale Recommended Village Pubs guide, which will be available from tourist information centres and other outlets across the Vale. Other finalists in our branch area were the **Five Elms**, Weedon; **George and Dragon**, Quainton; **King & Queen**, Wendover; **Oak**, Aston Clinton; **Partridge Arms**, Aston Clinton; **Pheasant**, Brill and the **White Swan**, Whitchurch.

TO
**CELEBRATE
40 YEARS**
OF

CAMRA's **GOOD
BEER
GUIDE**

**A LIMITED EDITION
GIFT PACK**
brewed specially by

THE
**CHILTERN
BREWERY**

**Bottle Conditioned
Ruby Anniversary Ale 7.2% vol**

**Gift Pack contains: 5 x 500ml bottles
and a unique commemorative
half pint stemmed & lined glass**

**£34.95 per gift pack
or two gift packs for £59.90
including postage to mainland UK
A £1 donation to CAMRA is made
from every pack sold**

Order yours at

T: 01296 613647

W: chilternbrewery.co.uk/GBG40

Orders dispatched from October 2012

Marlow Royal British Legion BEER FESTIVAL WEEKEND

**Friday 28th December 2012 to
Tuesday 1st January 2013**

**Station Approach, Marlow, Bucks.
Tel: 01628 486659**

**FIFTY YARDS FROM MARLOW STATION!
PLENTY OF PARKING AVAILABLE**

BEER FESTIVAL

**Friday 28th Dec to
Tuesday 1st Jan
Opens 11am**

12 different cask ales

**'Name the ales'
competition!**

No admission fee

**Members & Non
members welcome**

**Cheap prices on all
cask ales!**

Food available all weekend

Saturday 24th Dec

Xmas Eve

'Tony Layton'

New Years Eve

Disco

£8 per ticket

2013 Events to note:

**Jersey Guys - Feb
Mersey Echoes - Mar
3 American Legends - May
Abba Divine - Aug**

**Contact 01628 486659
website www.rblmarlow.co.uk**



Pest Services and Prevention

www.msc-beesknees.co.uk

Office 01296 770214

Mobile 07950 379250

Specialist in Public Houses and Restaurants

Call today for Free Survey and Advise

Open Contract or Call Out, we work with you not for you

Domestic/Commercial/Industrial/Agricultural

Local Authority Approved, CRB cleared, Fully Insured



**Wasps £35.00 inclusive,
Guaranteed, No Hidden Charges**



**Rats/mice/squirrel/glis glis,
Initial set up £45.00**



**New 'Bird Free' Prevention system,
for Pigeons, Starlings, Gull, Heron etc,
no nets, spikes, pins.**

Feral Bird Mess Cleaning

Woodworm, Cockroaches, Insects, Flies, Bugs

mrbumble1@gmail.com or

beesknees.pestcontrol@gmail.com

© Bees Knees by MSC Ltd

Ian & Lynne welcome you to The Black Horse, Lacey Green

Tel: 01844 345195



Four Traditional Ales & One Real Cider!

We are in the 2013 GOOD FOOD and GOOD BEER Guides!

Breakfast 9 - 11 Tues - Sat (5 items £4.50, 8 items £6.50 (both incl. tea or coffee))

Lunches 12 - 2.30 Tuesday - Sunday, Evening Meals: 6.30 - 9.30 Tuesday to Saturday

Pub open all day Friday, Saturday, Sunday & Bank Holidays

Please note: The pub is closed Monday until 5pm

**CHRISTMAS MENU NOW AVAILABLE
(TEL: 01844 345195 TO BOOK YOUR MEAL)**

2 course plus coffee and mince pies £18.99 (same price as last year)

3 course plus coffee and mince pies £21.99 (same price as last year)

£5 PER PERSON DEPOSIT NON REFUNDABLE

OPEN ALL DAY! BOOKINGS ONLY! AVAILABLE FROM NOV TO JAN

Last Sunday of month - Quiz night (Free to enter)

Wi Fi now available!

Car Park

Friendly Atmosphere

Check for further details on - www.blackhorse-pub.co.uk or email: lynnecomley@btconnect.com

LOCAL BREWERY NEWS

Aylesbury Brewhouse



It's been a little quiet at *Aylesbury Brewhouse* due to it being 'all hands to the pump' at *Vale*.

However, available in December are *Hop Harvest* 3.8%, a green-hopped bitter with local fresh harvested hops from Berkshire Hops in Kingston Bagpuize and *Illumination Porter* 4.9% for Christmas.



Brews planned for the near future are *Tin Roof Rusted*, a 4.4% red ale, *Beta*, 4.0% blonde, *Whip Hand*, 4.2% bitter and *Hornswoggler*, 4.7% pale ale.

The Roger Protz collaboration *Sink or Swim* 7.0% 152-day matured IPA will be available in 330ml bottle-conditioned form in early December.

Chiltern Brewery

The *Ruby Anniversary Ale* Gift Pack *CAMRA* and the *Chiltern Brewery* recently launched to celebrate 40 years of the *Good Beer Guide* is now bottled and ready to go.

Described by Roger Protz as 'superb and amazingly complex', the pack makes an ideal gift for Christmas which can be enjoyed over the festive period or laid down to improve with age for a later date.



Rebellion Brewery

Production wise, *Rebellion* are busy gearing up for what promises to be their busiest Christmas ever. They'll be brewing an unprecedented eleven times a week throughout December in order to keep up with demand for the brewery shop and the trade at large.

Their December special is *Ice Breaker* which is a 4.2% ABV pale and hoppy beer with a crisp, clean finish.



The January beer is yet to be decided whilst they await the results of the customer vote for their favourite *Rebellion* monthlies from the past twenty years.

As 2013 is *Rebellion's* 20th

Anniversary they asked their customers to vote for their top twelve favourite beers to bring back for their monthly range. The voting has now finished, and all will be revealed in January!

Their shop will be open on Sunday 23rd of December to give customers an extra opportunity to buy their fresh beer for the Christmas period, and their 22 pint mini barrel with extended life will be available to the general public for the time.

XT Brewery

XT have a Christmas ale, appropriately numbered 25 available for December. This is described as a festive rosey red ale, with English Golding and New Zealand Wakatu hops for a top to bottom winter warmer.

There is also winter seasonal, dark and multifarious, *XT* 9. Brewed with nine hops and nine malts including a unique birch smoked malt from the island of Gotland in Sweden.

Why not join in on the branch visit to the *XT* open evening on Thursday 6th December from 6pm to 10pm, when we will be able to try a range of *XT* beers with a few one-off special beers you definitely won't get anywhere else.



REBELLION BREWERY SHOP REAL ALE FROM MARLOW

Drink Real Ale at home!

FREE tasting of all our beers available in the shop

FREE glass hire

Shop open 6 days a week



**No need to pre-order.
Real Ale from
£1.40 per pint**

**Mon-Fri 8am - 6pm
Sat 9am - 6pm**

Further information about our beers, map and prices, visit
www.rebellionbeer.co.uk

Collect **fresh** from the brewery
in 3 / 5 / 9 / 18 / 36 / 72
pint containers

**Visit the shop
see the brewery
try the beers**

www.rebellionbeer.co.uk

Rebellion Beer Company
Bencombe Farm
Marlow Bottom, SL7 3LT

01628 476594



Beer Festival Equipment

*Hire of Barrel stillage,
cooling, taps, bars etc*

*Barrel (9gl) Stillages/ Racking,
traditional wooden 2 x 9gl, 12 x 9gl*

*Taps, Chiller Saddles
& Insulation Jackets*

Chillers Remote

Bar units - 2 metre long and flooring

Hand pumps

*Photos and a very competitive price list
are available on the website*

Web: www.beerfestivalequipment.co.uk

Email: john@beerfestivalequipment.co.uk

Tel 07770 938300

Based near Bicester

THE INN AT EMMINGTON

Pub & Restaurant, Cask Ales & Wines
En-suite Rooms



Three Cask Ales always available
Good Beer Guide 2013



A la carte and bar menus daily

Lunch, Wednesday - Saturday 12-2pm
& 3pm on Sundays

Dinner, Monday - Saturday 6.30-9pm

Tel: 01844 351367

email: theinnemmington@btconnect.com

website: www.theinnatemmington.co.uk

**Sydenham Road, Sydenham,
Chinnor, OX39 4LD**

THE THREE HORSESHOES

Burroughs Grove Hill, (Old Wycombe Road),
Marlow SL7 3RA



Six Rebellion Ales (including Mild)

*Quality Wines from Laithwaites/
Direct Wines*

Extensive Lunchtime menu

Sunday Roasts 12-3pm

Fantastic Evening Menu

Tuesday-Saturday

Monday Night Specials

Open all Bank Holiday Weekends!

Large Garden and Car Park

2 Log Fires

01628 483109

The Wheel

A Traditional English Pub, Purveyors of Fine Ale

Local CAMRA Pub of the Year WINNERS 2011

Good Beer Guide 2008, 2009, 2010, 2011, 2012, 2013

CASK MARQUE APPROVED

Home Cooked Food

Seasonal Specials

Local Produce

Family Friendly

Dog Friendly

100 Main Road, Naphill, HP14 4QA Tel: 01494 562210

www.thewheelnaphill.com

info@thewheelnaphill.com

Real Ale - Real Food - Real Pub

ISAMBARD AND JOE'S FAMILY
PUBS LTD PROUDLY PRESENTS:

THE SWAN, GREAT KIMBLE

*A Free House serving fine
ales and quality food*



Featuring:

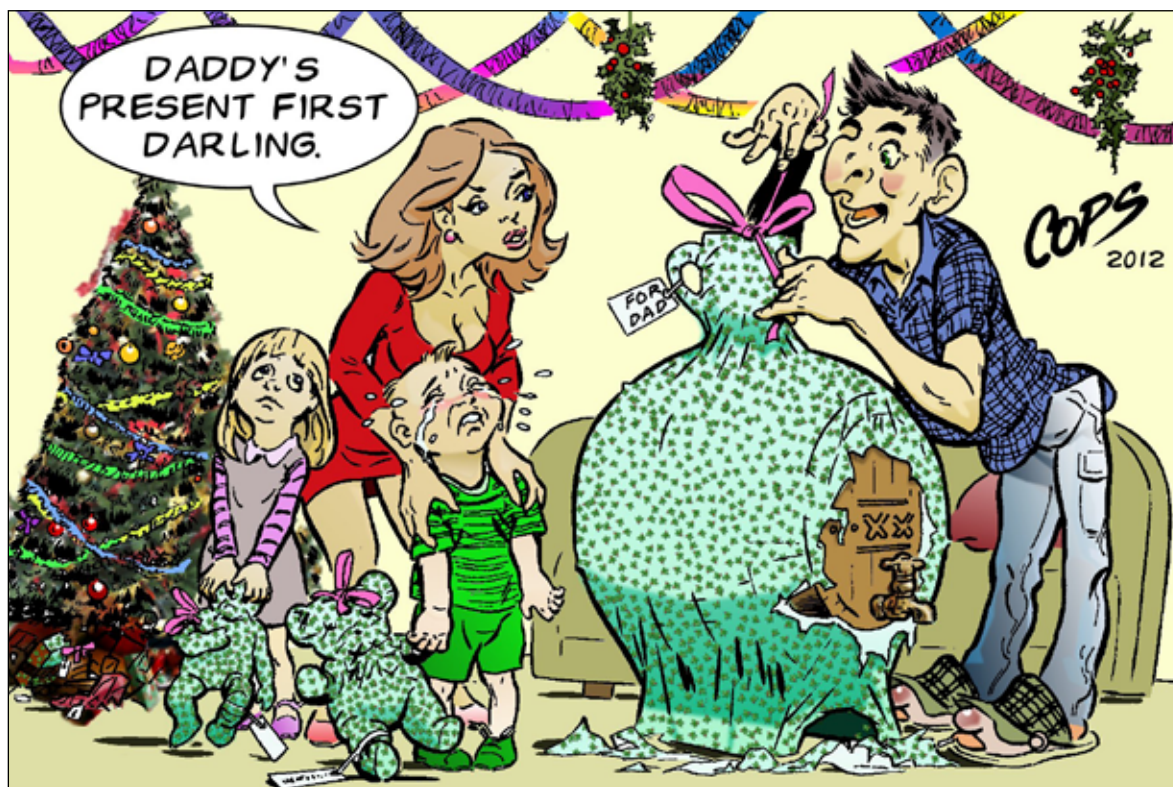
- * 2 regular real ales plus occasional guest
- * home cooked food served 7 days a week
- * enclosed family beer garden adjacent to village green and playground
- * choice of roasts every Sunday
- * functions catered for.

As seen in the Good Beer Guide 2013

The Swan, Grove Lane, Great Kimble, Aylesbury HP17 9TR
(half a mile walk from the 300 Aylesbury – High Wycombe bus route).

Bookings taken via telephone number 01844 275288.

GRAVEDIGGERS - PART TWENTY



pheasant shoot on his estate on the regional television news.

'Either of you two fancy a trip to London?' Mazz asked, realising that she'd thought of a crafty way of shifting 650 pints of *Mince Pie-Eyed*.

On the day of the mass lobby, James helped load the ginormous barrel onto a trailer behind Old Moses's tractor.

'What a luvverly smell,' Old Moses said, sniffing the putrid aroma emanating from the beer. 'Mingles well with the whiff of all that caked-on manure.'

'We'll watch out for you on TV,' Mazz shouted as Old Moses set off, with Old Pete clinging to the barrel at the back. 'Hold on, isn't that the wrong way for London?'

The end of the year was approaching and the **Gravediggers'** microbrewery had a problem. The latest gyle had been brewed the morning after a particularly heavy session on the *Fit Shaced*, which was held in an impromptu lock-in to celebrate the arrival of Psycho Simon, the new brewer.

Psycho Simon had woken up with such blurred vision that he failed to see the decimal points in some of the ingredients in the beer recipe and imagined extra zeros on the end of others. Consequently, he'd brewed quantities ten times greater than he'd planned of the Christmas seasonal ale – *Mince Pie-Eyed*.

James started to be worried when the fermenters overflowed and Psycho Simon ran into the bar demanding extra capacity. Fortunately Old Moses had a couple of almost empty slurry tanks on his next door farm – and a few lengths of hosepipe and a warming fire of old tractor tyres to warm the fermentation saved the day.

To cope with the huge quantities of beer, James had tried to be inventive and create Christmas gifts, mixing the beer into local foodstuffs. However, the pungent acidity of the brew burned the bangers, cremated the cheddar and choked the chutney. The only containers that could withstand the corrosion were huge, pitch-lined barrels that James tried to flog as Christmas stocking fillers. But there were only so many locals who'd welcome a tank of toxic sludge under their tree and some creative thinking was needed to shift the rest.

It was six o'clock on a particularly slow day in the bar and, having read the Sun out loud to locals only capable of looking at the pictures, Mazz leafed through the latest *What's Brewing*. The newspaper had been left behind in a panicked frenzy when, on a social, the local **CAMRA** branch tasted the **Diggers'** beer and had bolted en masse for the door.

'Oh, a **CAMRA** mass lobby of Parliament, in aid of bringing down beer duty,' Mazz read.

'All those MPs, swilling their gin and tonics, never touched a pint of decent beer in their lazy lives, that's their trouble,' Old Pete said, picking himself off the floor after downing a pint of *Mince Pie-Eyed*.

'They don't understand that a good pint or twelve of beer is what keeps the working man going through the day. No wonder the country's gone to the dogs,' said Young Moses, who had been a fixture at the bar since eleven o'clock that morning. 'If they sipped a few mouthfuls of this then they'd be converted.'

'Converted into what?' Mazz asked. She glanced up at the TV in the corner where the **Diggers'** local MP, Sir Phil Mybootz, was being interviewed at a

'How should I know? Never been there before,' Old Moses said, reversing his tractor and heading for the M40.

Later that day, James flicked over from *Tat in Your Attic* on the pub TV to the 24-hour news channel.

'What are the chances our old boys have convinced the MPs of the joys of the elixir of the **Diggers**?' he said. 'Hold on. What's going on?'

The television pictures showed helicopter shots of Westminster and police frantically evacuating the area. A caption running at the bottom of the screen said 'Suspected Chemical Attack on Parliament'.

'A tractor carrying a barrel of noxious liquid, emitting purple fumes, headed first down Whitehall and then came to a halt right outside the Palace of Westminster,' said Sue Breathless, the reporter. 'The nature of the substance is currently the subject of scientific tests but it appears to be exceptionally dangerous, judging by the toll it has taken on the two suspected mass poisoners who drove it into London.' The camera zoomed in on the tractor, where Old Moses was slumped in a drunken stupor over his steering wheel and Old Pete had passed out with his lips around the tap on the barrel.

'We're going for an emergency statement from the Prime Minister and the Chancellor of the Exchequer from their secret bunker deep under Downing Street,' the news anchor said, cutting to the two politicians sitting behind a desk in dinner jackets.

The Prime Minister spoke. 'We have been informed that the suspicious substance found in Westminster is something called beer. My aides tell me it's a beverage that is enjoyed by the middle and working classes. Of course it's something we'd never drink ourselves but there's a silver lining to this crisis, isn't there George?'

'Because it's contains alcohol we can tax it! Tax, tax, tax the oiks! Pass me the port,' the Chancellor said.

Meanwhile in Parliament Square, a squad of Treasury officials descended on Old Pete and Old Moses. The mention of the word 'tax' was enough to rouse the two from their drunken stupor. They bolted towards Westminster tube station, vaulted the ticket barriers and headed to the platforms. Although they kept running downwards they didn't seem to be making much headway. 'Funny how everyone else on these stairs is coming up the other way,' said Old Moses, panting.

The customs men caught up with the two and slapped pairs of handcuffs on their wrists.

'You must surrender. There is no escape from the beer duty escalator.'

Branch Diary

Everybody welcome to all socials and meetings!

December 2012

Thursday 6th BREWERY OPEN EVENING

6.00pm XT Brewery Open Night Social, Notley Farm, Long Crendon

Saturday 8th WINTER BEER FESTIVAL

Noon, Haddenham Winterfest, Village Hall, Haddenham.

Wednesday 12th MASS PARLIAMENTARY LOBBY

11am, Mass Lobby of Parliament – meet Emmanuel Centre, Tufton Street, Greater London SW1P 3DW. Speak to your respective local MPs, and seek their support to protect the nation's historic beer and pub industry (<http://www.saveyourpintlobby.org.uk/>). Follow-on reception in same location at 4.00pm. London branches producing recommended pub crawls to follow (please check the website).

Friday 14th LEGENDARY AYLESBURY CHRISTMAS PUB CRAWL

Start 7.30pm Hop Pole, then Harrow, Rockwood, Queens Head, Kings Head, White Hart, Bell.

Friday 21st LACEY GREEN CHRISTMAS SOCIAL

7.00pm Black Horse, 8.00pm Whip.

Monday 24th CHRISTMAS SHOPPING SOCIAL

Relax After Your Last Minute Christmas Shopping Social

12.00pm, King's Head, Aylesbury

Thursday 27th THAME SOCIAL

Get Up Off The Sofa After Watching James Bond Films and the Sound of Music Social, 7.00pm Swan Hotel, 8.00pm Cross Keys

January 2013

Thursday 3rd WYCOMBE SOCIAL

6.30pm Falcon, 7.15pm WRL, 8.00pm Rose and Crown, 9.00pm Hobgoblin.

Thursday 10th HADDENHAM SOCIAL

7.30pm Green Dragon, 8.15pm Rose and Thistle, 9.00pm Kings Arms, 9.45pm Rising Sun.

Saturday 19th PUB CRAWL

Joint Henley to Marlow Crawl with Reading CAMRA: meet 12 noon, Little Angel, Remenham Lane, Henley-On-Thames, RG9 2LS; 12.40pm The Catherine Wheel, 7-15 Hart Street, Henley-On-Thames, RG9 2AR; 1.50pm Bird In Hand, 1 Greys Road, Henley-On-Thames, RG9 1SB; 2.30pm The Victoria, 48 Market Place, Henley-On-Thames, RG9 2AG; 3.05pm The Henley Brew House, 38 Market Place, Henley-On-Thames, RG9 2AH; 3.55pm Catch Arriva Line 800 Bus, Bell Street Henley-on-Thames; 4.15pm Duke Of Cambridge, 19 Queen's Road, Marlow, SL7 2PS; 5.00pm The Britannia, Little Marlow Road, Marlow, SL7 1HL; 5.45pm Baroosh, 56-58 High Street, Marlow, SL7 1AH.

Monday 21st BRANCH MEETING

8.00pm, Queen's Head, Aylesbury.

Tuesday 29th WEST WYCOMBE SOCIAL

8.00pm Swan, 8.30pm Plough, 9.00pm George and Dragon.

February

Saturday 2nd BREWERY VISIT

11.00am, Tring Brewery Visit, then Tring crawl (contact editor to book a place).

Monday 25th BRANCH AGM

8.00pm, King's Head, Aylesbury, bottle raffle, etc.

Further details can be found on our website

www.swansupping.org.uk

CATCH UP DURING BRANCH SOCIALS:-

PHONE 0792 215 8971



Buckinghamshire County Council Trading Standards
County Hall, Aylesbury, Buckinghamshire HP20 1UP
t: 08454 040506 (Consumer Direct for advice)
t: 08453 708090 (for business advice)

Oxfordshire County Council Trading Standards
PO Box 618, County Hall, Oxford, Oxon. OX1 1ND
t: 0845 0510845 f: 01865 783106
e: trading.standards@oxfordshire.gov.uk

DON'T MISS OUT!

Keep up with the latest local pub news, be given beer festival information plus the latest social details, please join our e-mailing list by going to:-

www.swansupping.org.uk/joinin

Swan Supping

Swan Supping is distributed free of charge to pubs in the branch area.

Circulation **6000** copies.

Edited by David Roe

Editorial Address : 16 Jasmine Close, Aylesbury, Bucks HP21 9SH.

Tel : 01296 484551

E-Mail : editor@swansupping.org.uk

Advertising rates are from :- 1/4 page £60, 1/2 page £120, full page £200.

10% discounts for payment in advance. Block bookings for six issues available.

We can even create the advert for you at no extra charge! All bookings are taken as run-of-paper. You can now pay for a year of adverts in advance and avoid any possible price increases! Please make all cheques payable to **CAMRA & W.**

Copy deadline for next issue, due out 1st February, is 14th January 2013.

Subscriptions :- *Swan Supping* is distributed to over 250 pubs and many other locations in our area but if you would prefer to receive your copy by post we can mail it to you immediately it is published. All you have to do is send £1.50 for each edition you wish to receive to the Editor at the address above and leave the rest to us! This applies to single copies to UK addresses only.

We can mail overseas, but the price will vary depending on the country to which it is to be delivered. Remember that most issues of *Swan Supping* can be downloaded from our website (www.swansupping.org.uk).

©Aylesbury Vale & Wycombe CAMRA 2012

Opinions expressed in *Swan Supping* are not necessarily those of the editor, or the *Campaign for Real Ale*.

Acceptance of an advertisement in *Swan Supping* by a pub or its availability there does not guarantee CAMRA approval.

Published by the Aylesbury Vale & Wycombe branch of the *Campaign for Real Ale* and printed by Pelican Print, Unit 14, Aylesbury Vale Industrial Park, Farmborough Close, Aylesbury, Bucks. HP20 1DQ Tel: 01296 422100

A Campaign of Two Halves

Join CAMRA Today

Complete the Direct Debit form below and you will receive 15 months membership for the price of 12 and a fantastic discount on your membership subscription.

Alternatively you can send a cheque payable to CAMRA Ltd with your completed form, visit www.camra.org.uk/joinus or call 01727 867201. All forms should be addressed to Membership Department, CAMRA, 230 Hatfield Road, St Albans, AL1 4LW.

Your Details		Direct Debit	Non DD
Title _____	Surname _____	£23 <input type="checkbox"/>	£25 <input type="checkbox"/>
Forename(s) _____		(UK & EU)	
Date of Birth (dd/mm/yyyy) _____		Joint Membership	£28 <input type="checkbox"/> £30 <input type="checkbox"/>
Address _____		(Partner at the same address)	
Postcode _____		For Young Member and concessionary rates please visit www.camra.org.uk or call 01727 867201.	
Email address _____		I wish to join the Campaign for Real Ale, and agree to abide by the Memorandum and Articles of Association	
Tel No(s) _____		I enclose a cheque for _____	
Partner's Details (if Joint Membership)		Signed _____ Date _____	
Title _____		Applications will be processed within 21 days	
Forename(s) _____			
Date of Birth (dd/mm/yyyy) _____			

01/06

Campaigning for Pub Goers & Beer Drinkers

Enjoying Real Ale & Pubs

Join CAMRA today - www.camra.org.uk/joinus

Instruction to your Bank or Building Society to pay by Direct Debit

Please fill in the whole form, using a ball point pen and send to: Campaign for Real Ale Ltd, 230 Hatfield Road, St Albans, Herts AL1 4LW

Name and full postal address of your Bank or Building Society Service User Number

To the Manager Bank or Building Society

Address _____

Postcode _____

Name(s) of Account Holder _____

Branch Sort Code _____

Bank or Building Society Account Number _____

Reference _____

9 2 6 1 2 9

FOR CAMRA OFFICIAL USE ONLY

This is not part of the instruction to your Bank or Building Society

Membership Number _____

Name _____

Postcode _____

Instructions to your Bank or Building Society

Please pay Campaign for Real Ale Limited Direct Debits from the account detailed on this instruction subject to the safeguards reserved by the Direct Debit Guarantee. I understand that this instruction may remain with Campaign for Real Ale Limited and, if it will be passed electronically to my Bank/Building Society.

(signature) _____

Date _____

Banks and Building Societies may not accept Direct Debit Instructions for some types of accounts.

This Guarantee should be detached and retained by the payer.

The Direct Debit Guarantee

• This Guarantee is offered by all banks and building societies that accept instructions to pay by Direct Debit.

• If there are any changes to the amount, date or frequency of your Direct Debit The Campaign for Real Ale Ltd will notify you 10 working days in advance of your account being debited or so otherwise agreed.

• If you request The Campaign for Real Ale Ltd to collect a payment, confirmation of the amount and date will be given to you at the time of the request.

• If an error is made in the payment of your Direct Debit by The Campaign for Real Ale Ltd or your bank or building society, you are entitled to a full and immediate refund of the amount paid from your bank or building society.

• If you receive a refund you are not entitled to, you must pay it back when The Campaign for Real Ale Ltd asks you to.

• You can cancel a Direct Debit at any time by simply contacting your bank or building society. Written confirmation may be required. Please also notify us.



mcmullens.co.uk

Hertford's best kept secret

Now yours to share!



Now available from Dayla Ltd, Unit 50, Aylesbury Road, Aston Clinton Bucks HP22 5AH • 01296 420261

Leased pub opportunities in your local area



Queens Head

1 -5 Temple Square, Aylesbury HP20 2QA

Key Attributes

- A thriving city centre pub on the outskirts of Aylesbury
- Recently refurbished with a stunning interior & exterior
- Intimate dining areas with 45 covers
- Small function room and exterior rear patio area

Three Horse Shoes

329 Amersham Road, Hazlemere,
High Wycombe HP15 7PX

Key Attributes

- Quality community local in an affluent area
- Established existing trade and a good reputation
- Situated on a busy road with huge levels of passing trade
- Great garden with a small covered decked area

**Find out more about running one of these pubs
or similar pubs in the area by contacting**

Dan Cashmore on 01283 502 414 or daniel.cashmore@punchtaverns.com

PUNCH TAVERNS IPHONE APP (Powered by Find My Pub)
is now on ITUNES and FREE to download

